

**Line Ads 503-364-4431**  
 FAX 503-370-4383  
**Display Ads**  
 503-364-4798  
 FAX  
 503-364-2692

# CLASSIFIEDS

**Capital Press**  
 The West's **Ag Weekly**

**1-800-882-6789 • www.capitalpress.com**

OMISSION & ERROR: Capital Press will exercise due care to prevent omissions and mistakes, but its total liability for any error, in any advertisement published, shall not exceed the proportionate space in which the error occurred. Credit, when allowable, will apply to the first insertion only.

**VIEW ALL CLASSIFIED ADS ABSOLUTELY FREE AT WWW.CAPITALPRESS.COM**

1400 Broadway St. NE  
 Salem, OR 97301  
 P.O. Box 2048  
 Salem, O  
 97308

**CAPITAL PRESS LINE CLASSIFIEDS**  
**CALL TOLL-FREE: / OR ONLINE**  
**1-800-882-6789 / 24/7 365**  
 www.capitalpress.com

### CLASSIFIED INDEX

Acreage.....420	Horses, Mules, Donkeys.....1130
Alpacas.....1171	Irrigation Equipment.....1380
Alternative Energy.....550	Jobs Wanted.....600
Antiques & Collectibles...770	Land.....400
Antique Farm Eq. & Parts.....1490	Livestock Equipment.....1280
Art/Crafts & Events.....760	Llamas.....1170
ATV's, Motorcycles.....20	Loans & Financing.....710
Auction Sales.....210	Logging Equipment.....1410
Auctions - Real Estate.....215	Lost and Found.....690
Automobiles.....40	Mini Ranchettes.....354
Auto Supplies.....30	Miscellaneous.....740
Bees.....930	Mixed Livestock Sales.....1230
Bison.....1260	Mobile & Manu. Homes.....240
Boats, Motors.....860	Motor Homes.....170
Building Materials.....500	Nursery Eq. & Supplies.....951
Business Opportunities...440	Nursery Stock.....950
Cattle-Beef.....1250	Orchard/Vineyard Equip.....387
Cattle-Dairy.....1240	Orchard & Vineyard Prop.....1540
Christmas Trees.....570	Organic.....980
Coastal Property.....290	Packing/Processing Eq....1390
Commercial Property.....430	Pasture.....425
Dairy Farms.....385	Personals.....580
Dairy Equip. & Supplies.1310	Pickups, Vans, SUVs.....60
Distributorships.....441	Potato/Sugar Beet Equip.1530
Dogs, Cats, Pets.....1100	Poultry & Fowl.....1040
Draft Horses & Equip. ...1135	Ranches.....356
Emu, Ostrich, Rhea.....1180	Ranchettes.....355
Equestrian Properties...353	Rabbits.....1070
Exotic Animals.....1140	Recreational Property...270
Farm Buildings.....510	Recreational Rentals.....280
Farm Chemicals.....920	Rentals, Leases.....320
Farm Equipment.....1600	Residential Property.....350
Farm Equipment Parts...1480	Rock, Sand, Gravel.....490
Farm & Ranch Products...960	Sawmill Equipment.....1440
Farm/Yard/Estate Sales...205	Seed.....870
Farm Seller.com.....220	Services.....660
Farms.....380	Sheep.....1160
Feed, Grain.....1010	Shop Equipment & Tools.....1340
Fencing.....480	Sporting Goods.....780
Fertilizer.....890	Swine.....1220
Fish.....750	Tanks & Storage.....1320
Forklifts.....1450	Timber Property.....390
Free Items.....730	Timber, Lumber.....470
Fuel, Heating, Firewood.540	Tires, Wheels.....130
Garden, Turf, Yard Equip.....1500	Tractors.....1560
Garden Materials.....900	Trailers, Horse & Stock...201
Generators.....1330	Trailers, Misc.....200
Goats.....1190	Travel Trailers, Campers. 150
Hay Equipment.....1520	Trucks.....80
Hay, Straw, Forage.....990	Truck & Pickup Parts.....100
Heavy & Indus. Equip...1470	Wells-Drilling Equipment...1350
Help Wanted.....590	

**20 ATV's, Motorcycles**

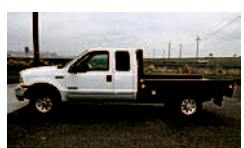
Capital Press Ag Weekly  
 It Works! By advertising with Capital Press, I get more calls than any other type of ad.

This is the best bang for the buck I have ever used!

Billy Hendrix  
 Pacific Coast Handlers  
 Capital Press Ag Weekly

**60 Pickups, Vans, SUVs**

#1 Pickups: Used Power Stroke & Dodge Diesel 4x4, call about great tax advantages! Willowa, OR. 541-569-2352



1999 Ford F350 Super Cab: Power Stroke, AT, A/C, 4x4, with custom flatbed and tool boxes. Rebuilt engine and transmission. \$11,950. Hermiston, OR 541-379-2285

**CLASSIFIED LINE ADS GET RESULTS**  
 1-800-882-6789  
 www.capitalpress.com

**60 Pickups, Vans, SUVs**

1986 Dodge Dakota Pickup: With overhead rack and tool boxes. \$1,000. Dayton, OR. 503-932-2712

2006 Dodge 1 Ton Dually: Diesel, 6- speed, 4WD, single cab, 71,654 miles, very good condition. Southwest WA. 360-921-9111

2007 Dodge S LT: Regular cab, Cummins 6- speed, 4x4, exhaust brakes, 1 owner, 1 driver. \$16,000! Clackamas, OR. Dennis, 503-789-4554

**WANTED**

Dodge Ram Cummins Turbo Diesel 4WD, 5- speed, 1991 to 1998. Private Cash Buyer. Napavine, WA. Dan 360-304-1199

**80 Trucks**

"BEST FARM PAPER AROUND!" Gerald Stanton • Granite Falls, Wash. Subscribe! Call 1-800-882-6789

**80 Trucks**

**Classifieds 1-800-882-6789**

**KELLEY Equipment Company**  
 541-215-5193  
 509-876-6736  
 gjkelley@q.com

**3406B CAT POWER**

**FIRE SEASON SPECIAL \$42,999**

**INTERNATIONAL**

- \* Virgin steer tires
- \* New recap drivers
- \* New windshield
- \* Updated cushioned seat #2617

**READY TO GO! CALL!**

\* 3 HD Batteries \* Thru Shop & Service \* DOT Compliant

**REBATE UP TO \$2,000 ON SELECT 2016 MODELS**

**YELLOW TAG EVENT**

**HURRY, OFFER ENDS AUGUST 31, 2016**

**POWER MOTORSPORTS**

503-769-8888  
 333 SW Sublimity Ave.  
 Sublimity, OR

**can-am**  
 Can-AmOffroad.com

**Capital Press**  
 California's **Ag Weekly**

Toll-Free 1-800-882-6789  
 www.capitalpress.com

**POWER**  
 YOUR REGIONAL COMMERCIAL DEALER FOR NEW AND USED

**We have New and Pre-Owned Commercial Vehicles**  
 Contact us today to see what we have waiting for you!

**CALL JIM, PHIL OR BRANDON (855) 537-2324**

**CHEVROLET BUSINESS ELITE**

**POWER FLEET - COMMERCIAL**  
 Email: fleet@powerautogroup.com • www.powerautogroup.com

**capitol CHEVROLET**  
 Your Way On The Parkway!

**NEW 2016 CHEVROLET SILVERADO 1500 LT**

**UP TO \$12,000 OFF MSRP!**

2855 Maple Ave. NE, Salem, OR 800-888-0591

**CHEVROLET**  
 Your Way On The Parkway!  
 capitol-chevy.com

**Stretch your dollars with ads in Capital Press...**

**the West's BEST Ag Weekly!**

800-882-6789  
 www.capitalpress.com

**20 ATV's, Motorcycles**

- ✓ Tons of Accessories
- ✓ Easy Financing
- ✓ Full Service Dealership
- ✓ Complete Line of Honda ATV's

**Serving Farms & Ranches for 52 Years**  
 1964-2016

**2016 TRX420FA1 RANCHER**  
 MSRP \$6,699 **SALE \$6,199**

- ◆ 4x4
- ◆ Big Racks
- ◆ Electric Start
- ◆ Liquid Cooled
- ◆ Fuel Injection
- ◆ 5-Spd Auto Trans
- ◆ 12 Month Warranty

STK# 00391

**TAYLOR honda sports**  
 Your Authorized Full Service Dealer

2140 N. Pacific Hwy. 99E • Woodburn, OR • Open 8-6 Tues-Sat.  
 (503) 981-1813 • 800-981-1813 • www.taylormotorcycles.com

**SUBURBAN CHEVROLET**  
 36936 Hwy. 26  
 Sandy, OR 97055

**FIND NEW ROADS**

**CHEVROLET**

**2016 2500 Crew Cab**  
 6.0 gas  
 PW & PL  
 HD Trailer Package

MSRP \$43,780  
 Stock #T160326 **\$33,990\*** After Rebates

**2016 12' Cube Van**  
 Single Rear Wheel, PW & PL, Rollup Door

MSRP \$40,770  
 Stock #T160444

**\$34,999\*** After Rebates

**2015 3500 12' Flatbed**  
 6.6 Diesel, PW & P. Locks, Bluetooth

MSRP \$48,540  
 Stock #T150079 **\$41,990\*** After Rebates

Call Fleet Mgr.  
**DJ Anderson**  
 (503) 454-4960  
 fax: (503) 668-4359

**CHEVROLET BUSINESS ELITE**

email: dj@suburbanautogroup.com  
 www.suburbanchevrolet.com

**For all your roofing and siding needs**

**1-800-470-4660**

**NORTH AMERICAN METALS, INC.**  
 Since 1987

**Buy Mill Direct**

**METAL ROOFING AND SIDING**  
 AGRICULTURAL • COMMERCIAL  
 INDUSTRIAL • RESIDENTIAL

**SUMMER SPECIAL!**

**3' wide metal roofing & siding \$1.49/LF Galvalume/Galvanized \$1.65/LF for select colors**  
 28, 26 & 24 GA available

**CALL US TODAY!**

**Boom Truck Delivery**

**Concealed Fastener Products**  
 12" TIGHT LOCK STARTER STRIP • PATENT #09291821

16" TIGHT LOCK STANDING SEAM METAL ROOFING PANEL  
 12" Coverage Width

12" TIGHT LOCK STANDING SEAM METAL ROOFING PANEL  
 12" Coverage Area

**Exposed Fastener Products**  
 2' CORRUGATED PANEL 2 1/2" 24" Coverage width

2' DELTA RIB PANEL 24" Coverage Width

2' WEST COAST PANEL 24" Coverage Width

3' WEST COAST PANEL 36" Coverage Width

3' TUFF RIB PANEL 36" Coverage Width

3' DELTA RIB PANEL 36" Coverage Width

3' R-PANEL & 3' PBR PANEL 36" Coverage Width

**www.NorthAmericanMetal.com**  
 Sales: 1-800-470-4660 • 503-844-8688 • Fax 503-693-1547