

1310 Dairy Eq. & Supplies

Kiln Dried Shavings: truck-load/ minimum 18 unit load, Forest Grove, OR. 503-849-0216

Polydome Calf Nursery: Hatches available for various climates. Western Polydome, Inc. Monroe, WA. 800-822-5837

Van Vetter: Model 1000 Stainless Steel refrigerated milk tank. 11'x5'x4' tall. Single 18 inch round top hatch. Copeland 1 phase compressor, 208/ 230V, \$2,500. South Bend, WA. 360-875-5494

1310 Dairy Eq. & Supplies

SIGN UP TODAY FOR FREE WEEKLY DAIRY E-NEWSLETTER:
access.capitalpress.com/newsletter.php

Van Vetter: Stainless steel refrigerated milk tank, 10'x5.5'x42" tall. Two large hinged lids. Copeland 1 phase compressor, 208/231V, \$2,500. South Bend, WA. 360-875-5494

1320 Tanks & Storage



VERTICAL STORAGE TANKS: Custom built up to 25,000 gallons, U.L. 142, water and fertilizer storage. Middleton, ID. 208-860-9256

1330 Generators

Bryant Industries, Italian made, 15 KW, PTO Generator: minimum 30 PTO HP, 120 Volt duplex outlet, 50 Amp welder outlet, \$1200. Portland, OR. 503-621-3610



GENERATORS: Low hour take-outs, 20kW to 2000kW, diesel, propane, & natural gas. Cooperstown, ND. 701-371-9526 or 701-367-4305. www.abrahamindustrial.com.

Lister-Powered Generator: Trailer mounted, needs fuel line work, \$500 OBO. Toledo, WA. 360-864-2979

1340 Shop Equipment & Tools

440 John Deere Bulldozer loaded with extras. Spike tooth Harrow. 2000 lb. jib crane, 12x12. Safeway Scaffolding. 12 Volt, 11 HP gas air compressor. 200 Gallon SS Milk Tank. Small Cement Mixer. Lake Stevens, WA 425-334-4782

1380 Irrigation Equipment

10" Aluminum Mainline: ring lock, \$3.50/ foot. 8" aluminum mainline, \$3.00/ foot. 1000' Wheel-line with mover. Sisters, OR. 541-480-7711

6" x 30' Redi Rain Mainline: 26 with hydrants, \$2.00/ foot. 49 without hydrants, \$1.75/ foot, miscellaneous fittings and opener valves. Albany, OR. 541-740-4480

Irrigation Wheels: Aluminum, (800) +-, ready to move, 6", \$35/ set, good condition. 45 miles south of Battle Mountain, NV. Travis 303-916-1844.



Irriland Irrigation Reels: 320' to 1200', booster pumps, diesel reel - in. Tillamook, OR. 877-842-9408

Large Amount of 3" x 40' Hook and Latch Irrigation Pipe: Used as solid set, various brands, T's, elbows, etc. \$37.50 per piece. Albany, OR. 541-740-4480

Wade-Rain ring and latch system: (26) 2" pipe, 20' long, \$0.75/ foot. (11) 2" aluminum couplers, with sprinkler and riser, \$15/ each set. (7) 2" couplers, \$10/ each. (10) 4" couplers, \$20/ each. (8) 4" to 3" reducers, \$25/ each. (1) 90 degree 4" elbow, \$30. (1) 6" take off tee, 4", \$50. (70) 4" couplers, 3" takeoff T's, \$25/ each. Miscellaneous galvanized couplers, 2", 3" and 4", and other items. Stayton, OR. 503-769-2222

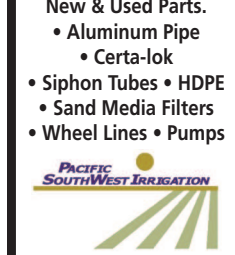
LINE CLASSIFIEDS
Call Toll-Free
1-800-882-6789
FAX: (503) 370-4383
Deadline Wed. at Noon
(Holidays may differ)
www.capitalpress.com

1380 Irrigation Equipment

Pivots: Good, various lengths, all brands & late models. No rust. Plus some pivot parts, pumps and buried wire. Keizer, OR. 503-881-3232, 503-390-3210

Wheel Lines, 1100' and 1300', \$3300 and \$3900. 5" pipe and 7" wheels, hydraulic movers, 5" mainline. Creston, WA 509-641-0641

IRRIGATION EQUIPMENT BOUGHT. SOLD. RENTAL.
New & Used Parts.
• Aluminum Pipe
• Certa-lok
• Siphon Tubes • HDPE
• Sand Media Filters
• Wheel Lines • Pumps



Stockton
Dixon • Turlock
Office: (209) 460-0450
Fax: (209) 982-1832
www.pacsouthwestirrig.com
Carlos (209) 481-7677
Jim (209) 986-0099
1380-32-2-1/#18

1390 Packing, Processing Eq.

Nut sorting tables set: (2) portable, hopper/ viber, (2) plastic dump bins, \$3,500 OBO. Davis, CA. 530-756-0842

Walk-In Coolers and Freezers: Temperature, humidity and Ethylene control, custom design and installation. Sandy, OR. 503-475-7046, carbontech@frontier.com, www.carbontechnologyinc.com

1410 Logging Equipment

CAT D5: Good shape, winch, tower set up for logging, \$16,000 OBO. Dayton, OR. 503-932-2712.

KELLEY EQUIPMENT SALES. EASTERN OREGON. 509-876-6736

1410 Logging Equipment

Logging Equipment: "All where is, as is." All or best offer. John Day, OR. 541-575-1525

Portable Honda Smithmill Sawmill: with spare flywheel and extra blades. Second owner. Like new condition, \$1800. Myrtle Point, OR. 541-518-4321

1440 Sawmill Equipment

Nile Systems Wood Kiln: Brand NEW, retail \$7,000, asking \$6,000. Hood River OR 541-354-1263

1450 Forklifts

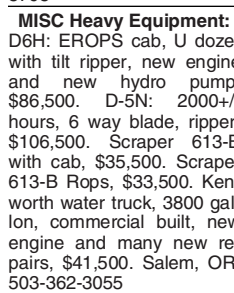
Used Lift Trucks
All sizes, makes & prices
Also New & Used Parts
LIFT TRUCK SERVICE
888-890-1450
forkliftsales.com
Ellensburg, WA



1470 Heavy & Indust. Equip.

1997 CAT 416C Extend-a-hoe Backhoe: 4x4, 2600 hours, light use, runs great, everything operates great, recently serviced, \$25,000 OBO. Albany, OR. 541-979-8798

MISC Heavy Equipment: D6H: EROPS cab, U dozer with tilt ripper, new engine and new hydro pump, \$86,500. D-5N: 2000+/- hours, 6 way blade, ripper, \$106,500. Scraper 613-B with cab, \$35,500. Scraper 613-B Rops, \$33,500. Kenworth water truck, 3800 gallon, commercial built, new engine and many new repairs, \$41,500. Salem, OR. 503-362-3055



1470 Heavy & Indust. Equip.



2002 Hitachi ZX200LC hydraulic thumb: air conditioning, 8714 hours, hydraulic quick change, good condition, \$35,000. Gaston, OR. 503-789-3726



CAT 980C: 9,412 hours, good rubber & shape, \$30,000 OBO. Tillamook, OR. 877-842-9408

CAT Crawler D6C: 76A, working condition, \$8,500. Port-Angeles, WA. 360-457-8210

KELLEY EQUIPMENT SALES. EASTERN OREGON. 509-876-6736

1470 Heavy & Indust. Equip.

CAT 304CCR Excavator: 2 buckets, \$31,000. CAT 307D, 2 buckets, blade, \$60,000. Silverton, OR. 503-932-0766



FOR SALE BY OWNER: 1977 International TD-15C Bulldozer, \$12,000. DT466 Diesel engine, less than 3000 hours, automatic power glide transmission, hydraulic 4 way, large 12' blade, 80% undercarriage, ROPS canopy. Includes spare parts. I have owned the machine since 1980 with very little use. Contact Alex in Snohomish, WA. 425-327-0102

NOW RENTING! CAT-D8T SU
w/3-shank mounted ripper
ATMACHINERY.com
888-461-0625
Five Points, CA 33-1/#19

1470 Heavy & Indust. Equip.

International TD15 Bulldozer: WORK HORSE. Rebuilt engine. Gas start, diesel engine, \$5,500 Hood River, OR. 541-354-1263

CASE INDUSTRIAL PARTS
We sell genuine, after market, and used CASE parts at discount prices nationwide. Call For Free Catalog.
CENTRAL EQUIPMENT
AFTER MARKET & USED PARTS
Medford, OR
(888) 593-8749

Quality Used EQUIPMENT & ATTACHMENTS
• INDUSTRIAL
• COMMERCIAL
Please visit our Website www.amtractor.com for a complete list of Machines and Attachments

American Tractor
Our Toll Free #
888-499-8980
Call Cameron Noble or Eric Hunt
Central Point, OR 33-4/#5

BE BOLD

Give your classified line ads extra punch when you **BOLD** pertinent copy like the header, outstanding items and the phone number.

For just \$2 more per week per ad, **BOLD**-ing specific copy insures the reader notices the most important part of your ad.

DEADLINES:
Classified Display Ads, Weds. @ 10AM
Classified Line Ads Weds. @ Noon
1-800-882-6789
Fax 503-370-4383
www.capitalpress.com
Capital Press
The West's Ag Weekly

1330 Generators

Bryant Industries, Italian made, 15 KW, PTO Generator: minimum 30 PTO HP, 120 Volt duplex outlet, 50 Amp welder outlet, \$1200. Portland, OR. 503-621-3610



GENERATORS: Low hour take-outs, 20kW to 2000kW, diesel, propane, & natural gas. Cooperstown, ND. 701-371-9526 or 701-367-4305. www.abrahamindustrial.com.

Lister-Powered Generator: Trailer mounted, needs fuel line work, \$500 OBO. Toledo, WA. 360-864-2979

1340 Shop Equipment & Tools

440 John Deere Bulldozer loaded with extras. Spike tooth Harrow. 2000 lb. jib crane, 12x12. Safeway Scaffolding. 12 Volt, 11 HP gas air compressor. 200 Gallon SS Milk Tank. Small Cement Mixer. Lake Stevens, WA 425-334-4782

1480 Farm Equipment Parts

1480 Farm Equipment Parts

1480 Farm Equipment Parts

1480 Farm Equipment Parts

1480 Farm Equipment Parts

1480 Farm Equipment Parts

KEEP A SHARP EDGE.

BUILT TO OEM SPECS. BUILT TO LAST. BUILT FOR ALL MAKES.

NEW HOLLAND AGRICULTURE

New Holland rotary cutting knives are built stronger to last longer. Keep your harvesting edge and replace knives to match your current field and crop conditions. Available as single knife or convenient replacement kits, New Holland knives provide clean cuts on the toughest crops and conditions.

7° TWIST KNIVES

Recommended for abrasive soil and rocky crop cutting conditions. These knives function well for a wide range of field and cutting conditions.

"V" KNIVES

Recommended for operation in rocky conditions where excessive knife bending is a concern. This knife has greater resistance to bending when coming in contact with a foreign object.

14° TWIST KNIVES

Recommended for most crop conditions providing a close, clean cut and more lifting action. They're standard equipment on most heads. The 14° Twist Knife also is available with a serrated edge.

18° TWIST KNIVES

These knives provide a close cut and high lift for superior material flow. They're standard equipment on Durabine™ 416 and 419 self-propelled windrower heads.

KNIFE KITS

Kits are available to make knife repair quick and easy. The knives and hardware for one disc are included.

KNIVES AVAILABLE FOR ALL MAKES!

We Have 99 Years of Parts Experience to Serve You!!!

Overnight shipping is available for most parts!

Gary Brightwell 42 Years **Rick Summerfield 34 Years** **Betty Wentworth 19 Years** **Rick Wentworth 4 Years**

www.twinfallstractor-imp.com

Twin Falls Tractors
Twin Falls, Idaho
1935 Kimberly Rd.
1-800-293-9359

CNH INDUSTRIAL GENUINE PARTS

Northside Implement
Jerome, Idaho
1922 S. Lincoln
1-800-933-2904

Locally & Family Owned Since 1948!

New Holland is a trademark registered in the United States and many other countries, owned by or licensed to CNH Industrial N.V., its subsidiaries or affiliates. www.newholland.com

NEED WATER?

SERVING THE PNW FOR OVER 40 YEARS!

PIPE WE GOT IT!
P.N. BEST & CO. INC.
1-800-877-7453
425-882-1000
pnbestco@aol.com
Redmond, WA