

**1490 Antique Farm Eq. & Parts**

1941 International M Tractor: Runs, but needs work, \$2,000. Sunnyside, WA. 509-830-2130.

Allis Chalmers Model M collection: 9+ complete tractors and tons of spare parts, HD4 loader with ripper, dead 340 International diesel loader with 4 in 1 bucket, excellent undercarriage, Allis Model B fixer, International TD125, power shift, bad motor, 4 in 1 bucket, lots of miscellaneous. Call Russ. Kingston, WA. 360-620-3452

John Deere Model M 1950: Also have #5 mover, side and back cultivators, spring tooth and single plow, \$1,500 OBO. Cove, OR. 541-910-4441 or 541-568-4441

Model B John Deere: wide front end, \$2,500. Keizer, OR. 503-881-3232, 503-390-3210.

**1520 Hay Equipment**

#1 Bale Wagons: Buy, Sell, New Holland 2&3 wide self-propelled, pull-type models, parts, tires. Caldwell, ID. 208-880-2889 www.balewagon.com

(2) Hesston 4900 Balers: in excellent condition, \$6500 each/ OBO. Klamath Falls, OR. 541-591-0738 jmue121024@aol.com

1996 MacDon 942: Multi crop, 12' header, top auger, hay conditioner, \$6,000 OBO. White-Swan, WA. 509-952-2117

2011 New Holland BC 5070: Small square baler, very good condition, \$18,950. Colville, WA. 509-684-2575

Case IH8840 Swather: 1450 hours, 12' specialty crop header, UHMW lined \$12,000. Banks, OR. 503-314-8484

Farmhand: 8 bale grapple, \$1,150. Salem, OR. 503-910-2844

Freeman 370 Hydro PTO Baler: Like new. 16x22 long chamber, \$18,000. Harrisburg, OR. 541-995-6997

Hay Squeeze for Tractor Front Loader: Big or small bales, \$2100. Culver, OR 509-250-2846

Hay Squeeze: CAT Hyster 180 with new squeeze, solid forks, manual transmission, diesel, short mast, nice and clean, \$27,500. Creswell, OR. 541-954-4080

Homemade Roadrunner: Cummins, rebuilt Allison and mast, \$23,000. HT-740 Allison \$1,200. Ellensburg, WA. 509-929-6677

John Deere 925 MO-CO rubber rolls, hydraulic swing on tongue, always stored inside, \$11,500. Creswell, OR. 541-954-4080

Late model New Holland 1095 with 1032 Mil-Stak Bale Clamp. \$90,000 or \$65,000 without Mil-Stak. Sod Busters Sales, Polson, MT. 877-735-2108, 406-883-2118

**1520 Hay Equipment**

Large Supply of Rebuilt New Holland Bale Wagons: Also buying New Holland bale wagons. Sod Busters Sales, Polson, MT. 406-883-2118

McHale 995 TSR: Trailered, Square & Round Bale Wrapper, has self-contained hydraulics with Honda engine, 3500 bales, works good, \$18,500. Chehalis, WA. 360-520-5347

New 2016 Vermeer 1224: 12- wheel, hay carted rake, \$7950. (0%) APR, 36 Months, OAC. Colville, WA. 509-684-2575

New And Used Parts: for all models New Holland bale wagons. Largest inventory in North America. Sod Busters Sales, Polson, MT. 877-735-2108 or 406-883-2118

New Holland 1030 Stacker: 2- tie and 3-tie, fully updated, serviced and field ready, manuals included, excellent condition, \$13,000. Kennewick, WA. Text for photos 509-948-2564

New Holland 1048: self propelled Bale Wagon, \$9850. Colville, WA. 509-684-2575

New Holland 1065 Bale Wagon: field ready \$10,000. Williams, OR. 541-846-7175, 541-218-7858

NEW HOLLAND 575: Extended bale chute, hydraulic tension, excellent shape, \$12,500 OBO. Dufur, OR. 541-993-1028, 541-467-2273

New Holland 580 Small Square Baler: dealer gone through, \$15,500. Colville, WA. 509-684-2575

New Vermeer 6640: Rancher round baler, net wrap, and crowd wheels, \$33,243.50 (0% APR, 36 Months, OAC). Colville, WA. 509-684-2575

Used 2009 New Holland 1431 Discbine mower: 13' cut, \$25,750. Colville, WA. 509-684-2575

Used New Holland BR740 Round Baler: twine, \$14,950. Colville, WA. 509-684-2575

Used Tonutti 12- wheel Hay Rake: \$3500. Colville, WA. 509-684-2575

Vermeer L604: round baler, net and twine, \$14,500. Colville, WA. 509-684-2575

1999 New Holland 1411 Discbine Swather: \$15,700. Colville, WA. 509-684-2575

WANTED: Hay conditioner for New Holland 1112 or New Holland 1112 for parts. Hermiston, OR. 541-571-7750

**RCO Baits**  
Gophers • Squirrels  
Voles-Moles  
Dealer Locator  
1-800-214-2248  
Harrisburg, OR

**1530 Potato/Sugar Beet Equip.**

LOGAN SERIES 90 POTATO WINDROWER: Series 90 windrower, 2 row, RH, excellent condition, \$8500 OBO. Madera, CA. 559-352-1700

PARMA SMALL POTATO HARVESTER: 2 row, new belted primary chain, star table, field ready, \$9500 OBO. Madera, CA. 559-352-1700

**1540 Orchard, Vineyard Equip.**

Bearcat PTO Chipper: Model 70554, up to 5" diameter branches, extra set of blades, 3- Point hitch, 540 RPM, \$1200. Portland, OR. 503-621-3610

Ladders: Aluminum, orchard, (21), 8', 12', 14', & 16' Newberg, OR. 503-538-2688

OVS MacroBins: The original PNW distributor offering the full range of MacroBins. McMinnville, Medford, Pasco and Salem OR. 1-800-653-2216, www.ovs.com

Trellising Vineyards, Berries and Trees: We've got quality trellising supplies at competitive prices. McMinnville, Medford, Pasco and Salem OR. 1-800-653-2216, www.ovs.com

IF YOU HAVE A BEEF - sell it in next week's Capital Press!

**Looking for ORCHARD/ VINEYARD PROPERTY? Go to Class 387**

Capital Press  
www.capitalpress.com  
1540-1-53-1/#13

**TALLMAN LADDERS**

Crafted for Safety, Longevity, Stability and Affordability!

Quality Made in the U.S.A. Since 1954

tallmanladders.com  
(541) 386-2733  
(800) 354-2733

**1520 Hay Equipment**

**STACK RETRIEVERS**  
HAUSER BUILT  
Farm & Machine LLC  
928-300-0570  
928-567-6230

Full Warranty • Large or Small Bales  
Also handles 2-string bales in a 3-wide configuration  
www.hauserbuilt.com • Camp Verde, AZ

An Investment In Quality Never Stops Paying You Back.

**1540 Orchard/Vineyard Equip.**

**1540 Orchard/Vineyard Equip.**

Chehalem Valley Orchard Equipment  
Flail knives, hangers and D-rings. Available for most makes and models of flails. CALL NOW!

BEST PRICES AROUND!  
EARLY ORDER DISCOUNT



**20' PRUNE-RITE PRUNING TOWERS**

**NEW EQUIPMENT**

- Saw w/Tower.....\$1,300 First 4 at this price
- Right Way V Scrapers w/wheels & roller, 10'. \$6,900
- 20' Prune-Rite tower.....\$26,993
- 243C Bump Cart, 3.5 tote w/unload chain for better cleaning.....\$17,500
- Hy. Pruning Saw with hoses & couplers.....\$1,500

**USED EQUIPMENT**

- (2) 20' Prune-Rite Tower.....\$14,000-\$18,000
- Weiss McNair 9800 Harvester.....\$32,000
- Oregon Orchard 8' Straight Blade Scraper...\$800
- Infco Electrocup model #F3010, fresh rebuilt with 6'10" extension, safety glove.....\$1,700
- Weiss McNair HS 16 sweeper w/newer 20 HP Honda motor. Ready to go.....\$3,900
- Troybilt Brush Grinder, 8 hp, like new.....\$800
- Viacom Fertilizer Spreader.....\$400
- Sure Farms cold air drain, frost protection.....\$900
- John Deere 613 3pt, 6' rotary mower.....\$1,000
- Edwards 3pt. Forklift, no side shift.....\$900

Call Gary at (503) 538-7739  
www.chehalemvalleyorchardequipment.com  
or Come See Us at 24175 Dayton Ave. Newberg, Oregon 97132

**1560 Tractors**

#1 Massey Ferguson Tractors: Oregon City, OR. 503-781-0846

(2) 5210 John Deere Tractors: 3 plus three synchronized transmission, 3-point PTO, two piece roll bar, new rubber, 2000 year model, very clean, \$9,250/ each. Graham, WA. 206-947-0903

1941 International M Tractor: Runs, but needs work, \$2,000. Sunnyside, WA. 509-830-2130.

1960 John Deere 430 T: 5 speed, power steering, live PTO, 3-point hitch, good rubber, very nice, restored, \$10,000. Eugene, OR. 541-689-4136



1990 LORAL MAGNUM III SPREADER  
Runs and Spreads! Cummins 6CTA, Auto with 4 speed auxiliary transmission, lots of spare parts. Overall in good condition, does need a little TLC., \$10,000 OBO. Mount Vernon, WA. Call Robb at 360-661-5076

2011 NEW HOLLAND 1530G: 4WD, gear transmission, front loader with quick attach bucket and forks, 259 hours, rear hydraulics added, \$19,600. Salem, OR. Contact 503-508-7034.

3 OLIVERS: 1947 70 rebuilt engine, \$1300. 1950 66 rebuilt engine, \$1500. 1955 Super 77, \$1900. 1955 Super 88D, SOLD. Or \$4000 for all. Nick, Longview, WA. 360-957-1871

4450 John Deere: MFWD, power shift transmission, 9000 hours, new transmission, interior, and 14.9 x46" rubber, clean tractor, \$28,500. Moses-Lake, WA. 509-771-1076

Don't Miss This One!

ALLIS CHALMERS 220: Very good condition Allis Chalmers 220, front and wheel weights, 24.5x 32 duals, inside new, outside 50%, \$16,000 OBO. Mt. Vernon, WA. Brian Olson 360-708-7943. For pictures and information email olysgunshop@fidalgo.net

Attention Wanted Kubota or John Deere: 4x4 compact tractor with loader/ equipment. Carlton, OR. 503-550-0094



CASE IH 7150 MAGNUM  
This tractor has only 164 hours on complete new engine, radiator, hoses, etc. Please call for any information that you would like to ask. Price is \$49,500. Prineville, OR. Call 541-233-3771

Ford 9N: Dealer renovated, painted, 12V, with 6' landscape scraper, \$3,100 OBO. Davis, CA. 530-756-0842

John Deere 4320: excellent condition with John Deere loader, 4350 hours, second owner, needs paint, \$15,000. Gervais, OR. 503-991-1515

"The Capital Press is IT!"  
Lorin Zastoupi • Leaburg, Ore.  
Subscribe at 1-800-882-6789

MERIDIAN EQUIPMENT  
#1 resource for hard-to-find equip. & parts to restore old tractors. OR let our trusted experts do the restoration!  
360-398-2141  
MeridianEquip.com  
Bellingham, WA

**KUBOTA**  
THE NAME YOU TRUST  
CHRIS HAEFFER  
ALWAYS A GREAT DEAL  
NEVER ANY BULL  
541-910-6222  
www.orangertractorsmaller.com

**BANKS TRUCK & TRACTOR PULL COMBINE DESTRUCTION DERBY**

August 20<sup>th</sup> August 21<sup>st</sup>

- Tractor Pull - 2pm
- Truck Pull - 6:30pm
- Truck & Tractor Pull - Starts 1pm
- Kid's Pedal Pull - 1:30pm

Sunday 8/21 Sponsored by Papé  
COMBINE DESTRUCTION DERBY 4:30 PM  
More Info: www.bankssunsetpark.com/bbq/ Banks, OR 1560-32-3-1188

**Branson TRACTORS**

Model 4020R

SERIES 3120R 4020R 3520R 4525R 3510H 4720H 6640 8050

24 - 80 hp., 4 wheel drive Compact Synchro-Shuttle Hydro 24, 28, 35, 47 hp

**BRANSON BOSS 800 UTV's**

Two-or-Four door models have 60hp and speeds up to 58mph.

- Front Winch
- Hard Doors & Roof
- Electric Dump Bed
- 14" Wheels with 27" Tires
- Top Mount LED Light Bar

**THE TRACTOR STORE**  
(541) 342-5464  
5450 W. 11<sup>th</sup>, Eugene, OR

**1560 Tractors**

International F 1466 Tractor: Runs great! \$8,000. Sunnyside, WA. 509-830-2130.

John Deere 790: 2800 hours, 4x4, good condition, one owner, \$8900. Forest Grove, OR. 971-570-9607

JOHN DEERE COMPACT 790: Excellent condition, 375 hours, 4WD, diesel, 3-speed, loader, PTO, 6" backblade, AG tires, roll bar, etc., \$13,000. Lyle, OR. 503-781-3592

2006 New Holland TC30: 375 hours, loader, box scraper, adjacent rippers. Private Party, \$12,900. Aloha, OR. 530-903-6228

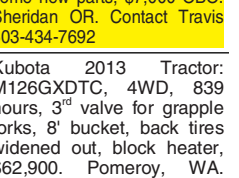


2003 NEW HOLLAND TRACTOR TN55: 4x2, 50HP, 42HP at PTO, 1830 hours, \$10,500. Oregon-City, OR. 503-781-8023

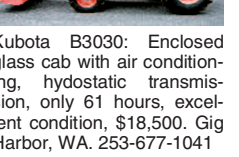
JOHN DEERE TRACTORS: John Deere 4430 excellent shape, new tires, quad range, 660 hours, \$21,000 OBO. John Deere 4450 power shift, 2wd, excellent shape, 6700 hours, new tires, \$28,000 OBO. John Deere 4020 158 loader, good tires, runs and drives great, \$9,000 OBO. John Deere 2640 HI-LOW, good tires, good condition, \$7,000 OBO. John Deere 8850 4WD, 400HP, good tires, bare back, newer engine, \$16,000 OBO. John Deere 8400 great shape, 270HP, transmission weak, \$34,000 as is, \$45,000 with rebuilt transmission. John Deere 8220 great shape, new engine, 260HP, new tires, 9500 hours, \$78,000. John Deere 220 wheat header with trailer, great shape, some new parts, \$7,000 OBO. Sheridan OR. Contact Travis 503-434-7692

Kubota 2013 Tractor: M126GXDT, 4WD, 839 hours, 3<sup>rd</sup> valve for grapple forks, 8' bucket, back tires widened out, block heater, \$62,900. Pomeroy, WA. 509-549-3624.

Kubota B3030: Enclosed glass cab with air conditioning, hydrostatic transmission, only 61 hours, excellent condition, \$18,500. Gig Harbor, WA. 253-677-1041



Kubota B3030: Enclosed glass cab with air conditioning, hydrostatic transmission, only 61 hours, excellent condition, \$18,500. Gig Harbor, WA. 253-677-1041



KUBOTA TRACTOR WITH LOADER  
2011 M126 Kubota tractor with loader and grapple bucket. 1500 hours. 4x4, 3rd function valve. Heavy lift cylinders. 3 hydraulic remotes, 50 GPM hydraulic system upgrade. Quickattach, \$65,000. Custom flail mowers available. Aurora, OR. Call Alan 402-203-4548

Oliver 1650 Wheel Tractor: 6 cylinder engine, runs good, good rubber, dual remotes, needs some work, \$3250 OBO. Aurora, OR. Cell 503-704-8060, or 971-285-5982

(3) John Deere 8820: Excellent condition, spike tooth, belt pickup, \$15,000 each. Rickreall, OR. 503-930-1904

(4) Massey Ferguson Combines, 760 and 860: used in grass seed, shedded, Kippenger maintained every year. Also (2) Frutel Fluffers. Halsey, OR 541-974-4502

10' Box Scraper, \$950: Rankin post hole digger with two augers, \$950. John Deere M8 rotary cutter, \$4000. Mobile, tractor tire turner, \$2000. Boardman, OR. 541-571-5744

**1560 Tractors**

**1600 Farm Equipment**

(4) N7 Combines, \$1000 to \$8000. Will sell parts. 30' and 25' headers and carts. Creston, WA 509-641-0641



12' NORTHWEST ROTOTILLER:  
Model DHC144SC Northwest Tiller in fair to good shape. Tiller teeth in near new condition. Just tilled 40 acres in Tidewater, OR. \$7,500 Call 907-240-1473.

1210 Case Diesel Tractor: starts and runs great, \$4500. CAT 12 model 8T grader, have extra tires, wheels and drive chains, not needed in our operation, \$3500. TO20 parts tractor, complete except for one rear wheel, \$600. Burns, OR. 541-589-2068 denise072@centurytel.net

14' Wishek 812N-14 Disk: Barely used. Disked only 300 acres, \$27,000. Sunnyside, WA. 509-830-2130.

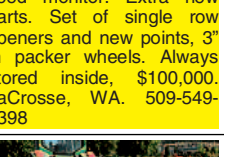
150 Gallon, 3- Point Sprayer, 30' Boom with Foam Markers: \$1500. Maupin, OR. 541-980-7189



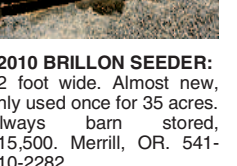
1998 Case IH 2166 Combine: Hilco Leveler, AFS, specialty rotor, all options, fully chromed, headers available, well maintained, field ready. Culesac, ID. 208-553-0853



2009 Ag-Pro: 30' no-till drill, 2" paired row, 36 openers, 5 section Raven boom shut off, 1500 gallon Aqua tank, 275 gallon starter tank with cone bottom tanks. Agron seed monitor. Extra new parts. Set of single row openers and new points, 3" in packer wheels. Always stored inside, \$100,000. LaCrosse, WA. 509-549-3398



2010 BRILLON SEEDER: 12 foot wide. Almost new, only used once for 35 acres. Always barn stored, \$15,500. Merrill, OR. 541-810-2282



2007 Massey Ferguson 9125 Header  
14' sickle header, ID#30091  
\$10,000.00



2008 Massey Ferguson Draper Header  
25' sickle, ID#186  
\$12,500.00



1991 Hesston 8400 Swather  
Cab, diesel, 14' sickle header, 2628 hours, ID#30137  
\$18,000.00



1993 New Holland 2550 Swather  
Cab, diesel, 14' 2214 sickle header, 6477 hours, ID# 1318  
WAS \$17,500 WAS \$15,000  
NOW \$12,000

**1600 Farm Equipment**

2007 Case 2588 Combine: 1949 engine hours, 1405 separator hours, Case 1052 Draper header 25', \$116,000 OBO. Odessa, WA. 509-982-2137

2009 30' John Deere: Ridged header and cart. Heavy duty reinforced reel finger rods. Always stored inside, good shape. \$17,000. LaCrosse, WA. 509-549-3398

29' Heavy Harrow Drag: like new, \$26,000. Jefferson, OR. 541-327-1645 njfarms@hotmail.com

3-point Tractor Mounted Chipper: Tractor in crate, up to 4" logs, \$3,100. Cave-junction, OR. 541-592-6650

400 Gallon Rears Airblast Sprayer: used 100 hours, \$12,500. Sheridan, OR 971-241-0344

4930 John Deere Sprayer: 2000 hours, 120' boom, 1200 gallon stainless steel tank, 15" nozzle spacing, loaded, immaculate condition, \$135,000 OBO. Moses-Lake, WA. 509-771-1076

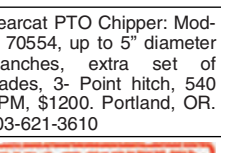


Farm King: Almost new 10' swing auger, 10x60, with side drive gear box and set back scissor lift undercarriage and hydraulic lift. Paint is still on the auger fighting, \$12,900. OBO. Silverton, OR. 503-871-0862.



Farmhand F11: High lift loader with bucket and 8-bale hay head. Hydraulic pump recently rebuilt. Loader in real good shape. Hermiston, OR. Ask for Vernon after 5pm. 541-564-7684

Flexi-Coil 67 Sprayer, 1000 Gallons: 90' suspended boom, 6- valve AccuBoom, automatic boom height, nice, \$22,500. Deer Park, WA. 509-994-9520



FLEXI-COIL DRILL PARTS: Complete press wheels, 9 in spacing, miscellaneous parts for towers. Condon, OR. 541-993-1028

For Sale Brillion 8' Pulv-mulcher: Like new condition, low price today is \$13,000, asking \$8500 firm. You haul. Wenatchee, WA. Call Roger, 509-630-6882 or Jim 509-42