

1380 Irrigation Equipment

USED DROP LOCK SOLID SET:
Excellent condition 3" x 40' used drop lock solid set. 30" risers with brass birds included. \$65 per joint. There are 1,800 pieces available. All in Southern Idaho. Call Jeff with questions 208.420.3246

Wade Rain: Tripod Big Gun Stand: Like new, \$900 OBO. Keizer, OR. 541-979-0165, 971-599-5165

IRRIGATION EQUIPMENT BOUGHT. SOLD. RENTAL.

- New & Used Parts.
• Aluminum Pipe
• Certa-lok
• Siphon Tubes • HDPE
• Sand Media Filters
• Wheel Lines • Pumps



Stockton Dixon • Turlock
Office: (209) 460-0450
Fax: (209) 982-1832
www.pacsouthwestirrig.com
Carlos (209) 481-7677
Jim (209) 986-0099
1380-24-3-2/#18

1410 Logging Equipment

Logging Equipment: "All where is, as is." All or best offer. John Day, OR. 541-575-1525

1450 Forklifts

CAT 980C: 9,412 hours, good rubber & shape, \$30,000 OBO. Tillamook, OR. 877-842-9408

2007 Hyster H120- FT: Propane, wide carriage, side shift, pneumatic tires, ready to work, \$13,750. McMinnville, OR. 503-550-7625



2009 Hyster H: 155FT, full cab, diesel, turbo, 3-speed automatic, column shift, dual pneumatic tires, 212"x2-stage, upright+ side shift, 4-spool valves, hydraulic fork positioners+ side shift, long or P&T forks. Would make good hay squeeze, \$27,000. Gaston, OR. 503-789-3726

ATTENTION!!! BERRY FARMERS:
(2) Kesmac 5000R "piggy-back" style forklifts. Kubota diesel engines. 3WD. 1610 hours & 3145 hours, \$6500 each, or both for \$12,000. Dayton, OR. 971-237-5466

Used Lift Trucks

Also New & Used Parts
All sizes, makes & prices
LIFT TRUCK SERVICE
888-890-1450
forkliftsales.com
Ellensburg, WA

1470 Heavy & Indust. Equip.

1980 CHAMP Forklift: 530-60, diesel, \$5,000. Rickreall, OR. 503-507-7230

D8H-46A U-Blade 2-Barrel Ripper: Low engine hours, good undercarriage, strong machine, High Horse #12994, reduced \$35,000 Enterprise, OR. 541-263-0132



2000 WELDCO-BEALS MULCHER:
36" disc, fits 120 size excavator or larger, cuts grass, brush, small trees. Rebuilt and ready to go! \$5,900. Rickreall, OR. Call 503-507-7230,

1380 Irrigation Equipment

NEED WATER?



PIPE WE GOT IT!

P.N. BEST&CO. INC.
1-800-877-7453
425-882-1000
pnbestco@aol.com
Redmond, WA
www.pnbestco.com

1470 Heavy & Indust. Equip.

2006 Bobcat Brushcat 72: high flow mower, \$4,800. 3-point side digger for digging bareroot trees, \$3,500. All in excellent shape. Gresham, OR. 503-209-8657, Tim.



2006 John Deere 317: Skid Steer, 2.4L turbo diesel, 66" bucket, aux. hydraulics, hand and foot controls, good rubber, 4667 hours, \$14,500. Clackamas Tractor, 503-655-1125

3-Point Side Digger: for digging bareroot trees, \$3,500. In excellent shape. Gresham, OR. 503-209-8657, Tim.

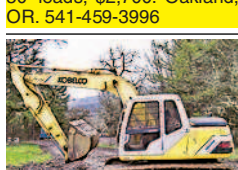


4890 SWATHER: Excellent condition! Has a 14' 890 header, 1507 Engine hours and 1111 Header hours. Asking \$27,500. McMinnville, OR. Derek 503-209-5846



1480 Farm Equipment Parts

Champion Super Pack 540: vibratory roller, 54" drum, pad foot shells, new tires, 1600 hours. Excellent condition, \$18,000. Miller Bobcat welder/ 8500 watt generator trailer mount, 50' leads, \$2,700. Oakland, OR. 541-459-3996



1996 KoBeLco SK120LC: 3,723 hours, rebuilt engine, long block & turbo. Fast, tight machine. Pre-computer, (2) buckets, \$26,500. Gaston, OR. 503-789-3726

CONCRETE PIPE:
New, never in ground, 1000', 48", Class III. 1100' of 60", Class III, all 10' lengths. Total 2100'. State inspected, delivery possible. Charles Duff Trucking, Castle-Rock WA. 360-430-6997 dufftruck@aol.com

D6R With Clearing Rake: 7800 hours, excellent undercarriage, serial #32N522, with cab, \$74,000. Graham, WA. 206-947-0903

EQUIPMENT FOR SALE

CRUSHER EQUIPMENT
Pug Mill on tandem axle carrier, 6'x8' Eagle twin shaft all electric hydraulic feeder, new bearings, ready to work.....\$65,000
C.E.C Road Runner Screen Plant, 100% self contained\$25,000
Dozer Trap, shop built on single axle carrier. \$10,000
Spokane 77 Impact Crusher, CAT Power, under belt tandem axle carrier....\$75,000
Nordberg Stacking Conveyor, 36"x50" \$10,000
Elijay Screen Plant, 5'x16', 3 deck, under belt & over belt on single axle carrier..\$27,500

CONSTRUCTION EQUIPMENT
Road Tec Profiler RX25 Cold Planer, 24"x48" drums.....\$48,500

TRAILERS
Better Weigh Rock Trailer, 10-Yard, 2 axle w/heavy duty tongue.....\$7,500
Columbia Pup Trailer, 3 axle.....\$8,500
Sturdy Built 3 axle, w/ front lift axle.....\$8,500
1997 Western 32" Tub.....\$12,500

CALL DAN OAKRIDGE SAND
541-521-5916
OAKRIDGE, OR 24-4/#5

1380 Irrigation Equipment

1470 Heavy & Indust. Equip.

Austin- Western Road Grader: Older model in excellent condition. Gooding, ID. 208-961-1590

Ford Industrial Engines: You can hear 'em run! 361 and 429, used for bale wagons also, \$1,200/ each OBO. Coeur D'Alene, ID. 208-691-6411

JOHN DEERE LOADER: 1981 John Deere 444C wheel loader. Very nice older machine. Has 4 in1 bucket, newer engine, newer tires. No leaks, fully serviced and ready to go to work. \$22,000. Powell Butte, OR. 541-420-3563.

MISC Heavy Equipment: D6H: EROPS cab, U dozer with tilt ripper, new engine and new hydro pump, \$86,500. D-5N: 2000+/- hours, 6 way blade, ripper, \$106,500. Scraper 613-B with cab, \$35,500. Scraper 613-B Rops, \$33,500. Kenworth water truck, 3800 gallon, commercial built, new engine and many new repairs, \$41,500. Salem, OR. 503-362-3055

CAT 977K Track Loader
4-in-1 bucket, new rollers, rails 40%.
\$7,500 OBO
Call Andy 425-418-3510
Leave msg if I miss call



1480 Farm Equipment Parts

Nampa Tractor Parts
Most Parts 1/3 New
(208) 467-4430
Nampa, ID

1470 Heavy & Indust. Equip.

Like new John Deere 650J crawler: 1300 hours, 6-way blade, rippers, sweeps and screens, \$96,900. Eugene, OR. 541-688-1441

New 8' Brush Rakes: with mounting brackets, \$1,050 each. Clackamas Tractor, Clackamas, OR. 503-655-1125

CASE INDUSTRIAL PARTS
We sell genuine, after market, and used CASE parts at discount prices nationwide. Call For Free Catalog.

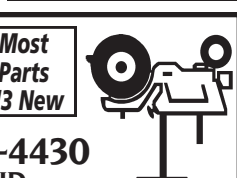
CENTRAL EQUIPMENT AFTER MARKET & USED PARTS
Medford, OR (888) 593-8749

Quality Used EQUIPMENT & ATTACHMENTS
• INDUSTRIAL
• COMMERCIAL
Please visit our Website www.amtractor.com for a complete list of Machines and Attachments

American Tractor
Our Toll Free # 888-499-8980
Call Cameron Noble or Eric Hunt
Central Point, OR 24-2/#5

NOW RENTING!
D8T-SU 3-shank rear mount ripper.
atimachinery.com

1480 Farm Equipment Parts



1480 Farm Equipment Parts

PLACE LINE CLASSIFIED ADS TOLL-FREE FROM ANYWHERE!
1-800-882-6789

1480 Farm Equipment Parts

1-800-882-6789
www.capitalpress.com

BIG TRACTOR PARTS, INC.

~ GEARED FOR THE FUTURE ~

STEIGER TRACTOR SPECIALIST

- 1. We are your source for new & used Steiger drivetrain parts Series 1 - 9300 Series.
- 2. We rebuild Spicer manual transmissions, Fuji power shift transmissions, dropboxes & axle with ONE YEAR WARRANTY!
- 3. We now rebuild computer control boxes for Steiger tractors 1982-1999.

800-982-1769
www.bigtractorparts.com

Call For All Your Parts Needs

Check Out Our New Arrivals on YouTube



JUST IN FOR PARTS ONLY

- (5) Hesston 4790 • Case IH 8575
- (2) Hesston 4900 • Case IH 8590
- Hesston 4755

All fresh in for the 2016 hay season.

BE SURE TO CHECK OUT OUR BALER PARADE ON YOUTUBE.

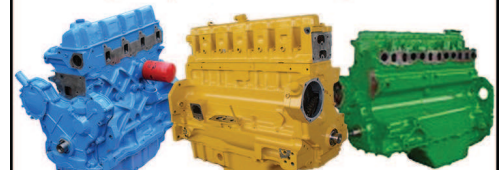
Celebrating 26 years in the agricultural machinery business. Our yard has 1/5 miles of road, with machinery on both sides. FREE TOURS GIVEN DAILY.

Call Toll Free: (888) 372-4020
www.nyssatractor.com
sales@nyssatractor.com
Nyssa Tractor & Implement
Nyssa, OR

NEW & USED OLIVER & CLETRAC
Crawler Parts Our Specialty
ZIMMERMAN OLIVER-CLETRAC
1450 Diamond Station Rd. • Ephrata, PA 17522
717-738-2573
Fax 717-733-3529
www.olivercletrac.com

NEW, USED, AND REMAN PARTS
TOLL FREE: 1-877-928-1646
32427 OLD HWY 34, TANGENT, OR 97389

Reman Engines for Case/IH, John Deere, and Ford



JD 4010, 4020 Clutch Kits \$715
Seats w/Air Suspension \$1,025

SALVAGED TRACTORS



Farmland Tractor Supply
Parts @Farmlandtractor.com

KEEP A SHARP EDGE.

BUILT TO OEM SPECS. BUILT TO LAST. BUILT FOR ALL MAKES.

NEW HOLLAND AGRICULTURE

New Holland rotary cutting knives are built stronger to last longer. Keep your harvesting edge and replace knives to match your current field and crop conditions. Available as single knife or convenient replacement kits, New Holland knives provide clean cuts on the toughest crops and conditions.

7° TWIST KNIVES Recommended for abrasive soil and rocky crop cutting conditions. These knives function well for a wide range of field and cutting conditions.

"V" KNIVES Recommended for operation in rocky conditions where excessive knife bending is a concern. This knife has greater resistance to bending when coming in contact with a foreign object.

14° TWIST KNIVES Recommended for most crop conditions providing a close, clean cut and more lifting action. They're standard equipment on most heads. The 14° Twist Knife also is available with a serrated edge.

18° TWIST KNIVES These knives provide a close cut and high lift for superior material flow. They're standard equipment on Durabine™ 416 and 419 self-propelled windrower heads.

KNIFE KITS Kits are available to make knife repair quick and easy. The knives and hardware for one disc are included.

KNIVES AVAILABLE FOR ALL MAKES!

STOP IN TODAY!

Put the Most Experienced Parts Department to Work for You!
CALL TODAY (800) 293-9359

www.twinfallstractor-imp.com

Twin Falls Tractors
Twin Falls, Idaho
1935 Kimberly Rd.
1-800-293-9359

Northside Implement
Jerome, Idaho
1922 S. Lincoln
1-800-933-2904