

**1280 Livestock Equipment**

**1997 MERRITT CATTLE TRAILERS:**  
1997 Merritt cattle trailers, set of joints 40' & 25', tires 80%, brakes 60-80%, floor 30% with cleats in high wear areas. LED lights. Well maintained, very good shape, \$20,000 OBO. Central Oregon. Call 541-525-2181

**2 Cattle Guards:** 5'10" x 12", 5'8" x 12", both with aprons, \$1,750 each or \$3,000/pair OBO. Turner, OR. Contact Randy or Jim, 503-743-2181

**Livestock Panels:** 16' (6) rail, (3) brace, \$106 each. **12' panels,** (6) rail, (2) brace, \$83 Bow gates, all lengths and sizes. These panels are new Green color, hundreds available. **Heavy 16' Feeder Panels,** \$280 each. La Grande, OR. 541-805-9279, 541-963-6258

**Powder River Crowd Alley:** and sweep tub, 4 section curved alley with catwalk, 3/4 circle sweep, fully sheeted, \$7,000. **Powder River 16' heavy duty panels,** \$160/ each. Culver, OR. 541-546-8747, 541-460-0841

**STOCK TRAILER:**  
1986 Wilson stock trailer, new tires, brakes, and bearings, aluminum wheels, 46' x 96", \$15,000. McArthur, CA. For more information contact: Rich Bean 530-945-9678

**1310 Dairy Eq. & Supplies**  
Cornell Manure Pump, 2.5 HM: Setup on PTO Gearbox, or bad Deutz motor, \$1000. Silverton, OR. 503-932-6262

**1310 Dairy Eq. & Supplies**

**Poly Dome Calf Hutches:** good condition, also old style surge computer tags. Cathlamet, WA. 360-560-5302

**Polydome Calf Nursery:** Hutches available for various climates. Western Polydome, Inc. Monroe, WA. 800-822-5837

**BEDDING SAWDUST:** minimum (18) unit order. For pricing call Forest Grove, OR. Preferred pricing for Tillamook dairies. 503-849-0216

**SIGN UP TODAY FOR FREE WEEKLY DAIRY E-NEWSLETTER:**  
access.capitalpress.com/newsletter.php

**Wanted Refrigerated Milk Tank:** 250/300 Gallons. Will pick up, Lattin Farms, Olympia, WA. 360-491-7328

**1320 Tanks & Storage**



**VERTICAL TANKS:**  
Up to 25,000 gallons; water, fertilizer, U.L. 142 fuel storage. Call Andy at 208-860-9256 for prices. Middleton, ID. RCF, LLC.

**1320 Tanks & Storage**

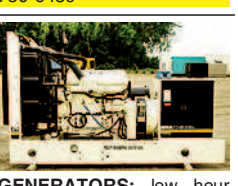
**1985 FORD FUEL TRUCK:** 4 compartment fuel truck, gas and diesel pumping sides, all tests current, street legal, extras, service records \$6,000 Canby, OR. 503-266-3321

**5000 Gallon Dari Kool Milk Tank:** 1-5 HP compressor, 1-3 HP compressor, \$20,000. Monmouth, OR. Call 503-999-9661

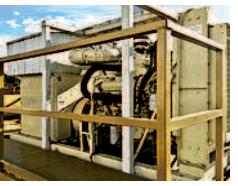
**1330 Generators**

**DIESEL ELECTRICAL GENERATOR:**  
Diesel electrical generator. EM packaged. Engine set is CAT 3406 aftercooled turbo. The generator set manufacturer is EM Bemac II, 1800 rpm. 250 KW standby, 237 KW continuous. High capacity radiator. Residential muffler, full enclosure, 300 gallons auxiliary fuel tank. 240-480 single phase or 3 phase. \$9,500. Will trade. Sheridan, OR. 503-550-2065

**Generator For Sale:** 20 KW whole house, Generac Generator, automatic transfer switch included. New, out of crate, never used or installed, weatherproof cabinet. Natural gas or propane, \$3900. Quincy, WA. 509-750-6439



**GENERATORS:** low hour take-outs, 20KW to 2000KW, diesel, propane, & natural gas. Cooperstown, ND. 701-371-9526 or 701-367-4305. www.abrahamindustrial.com.



**Kohler Diesel Generator:** 230KW, 3PH, 240/480 volts, 675 hours, generator controls, main breaker, fuel tank, trailer mounted, \$13,500. Tualitan, OR. 503-880-3215

**Lema III Generator:** Approximately 400 KW, 800 amp breaker, SAE fly wheel, rebuilt, \$2,750 OBO. Castle Rock, WA. 360-749-0800

**1340 Shop Equipment & Tools**

5 HP Pedestal Grinder with dust collector: 4x10" wheels, Peerless, 18" Steel Saw, 5HP Radial Saw, 15 inch blade. 503-728-2310

**Hobart:** 230V/185 amp, wire-dash fed welder, with cart, gloves, helmet, unused. \$500 firm. Waitsburg, WA. Call evenings, 509-337-6265

**Prentice Metal Lathe:** 17 x 54. Many tools included, \$1,000. Wilsonville, OR. 503-519-6536

**1380 Irrigation Equipment**

**1380 Irrigation Equipment**

**1-800-882-6789**  
www.capitalpress.com

**1380 Irrigation Equipment**

**CAPITAL PRESS CLASSIFIEDS GET RESULTS!**

**Your Leading Source for Pump & Motor Repairs**

**HP Pipe & Supply** On Call 24 hours!

**On Site or In-house • Motor Rewinds Ag • Commercial • Industrial**

598 Baseline, Cornelius, OR 97113  
Phone (503) 357-4217  
www.hpspipe.com  
rickw@hpspipe.com

Trade Ally of EnergyTrust of Oregon

**Water Master Series and Evergreen "Superior Service & Design"**

• All your needs for irrigation parts service  
• We build custom equipment for your special needs.  
• Hose replacements & fusion repairs

• Transport Tanks • Rental Returns & Used Equipment

**US Dairy Waste Equipment**

**VALLEY WORKMAN Truck Equipment**

• Full Service • Alterations  
• Dump bodies • Hoists  
• Farmbeds • Flatbeds

**Valley Fab Corp.**  
10910 Portland Rd. NE • Brooks, OR  
Call: 503-792-3739 • Fax: 503-792-3738

**WESTERN WATER DEVELOPMENT CORP.**

**541-548-8555**  
**Deep Irrigation Well Specialist**

**Air Rotary/Mud Rotary Well Deepening/Repair**

**FREE QUOTES & WRITTEN ESTIMATES**

**E-mail: wwdrill4u@aol.com**

**www.westernwater4u.com**



**LICENSED BONDED INSURED OWWC#1385** 1380-16-4-4/#5

**1380 Irrigation Equipment**

**(2) Wheel Lines:** 1200' each, 5" wheels, 5" pipe, self level sprinklers, hydraulic drive, \$2,500 each OBO. Aumsville, OR. 503-769-2090

1 Western Quarter Mile Wheel Line: \$2,500, 1200' of 10" aluminum mainline, \$150/ foot. Pasco, WA. 509-266-4497

100HP, General Electric Motor: 1765 RPM, was on a short set turbine, \$2,600. 509-750-5265.



**2" IRRIGATION LINES:**

Quality irrigation. Each 20' with 16" riser and Maxi-Bird fully adjustable impact head. Several types, including Western, Pierce Universal, Old Moore Rain, others. All in excellent working order, \$45/ piece. Lorane, OR. Contact poynterfarm@gmail.com

**6" IRRIGATION PIPE/PUMP:** (14) gated, (13) smooth, (13) aluminum gated, All 30', T's, 90's & shut-offs, many shorter, gated & smooth, and parts. 50% retail OBO. 5 HP Berkeley pump & foot valve, \$1,500 OBO. Meridian, ID. Call Bob 208-631-2481



**Aluminum Irrigation Pipe for Sale:** Approximately 30' long sticks, (7) 2", (30) 3", 4.4" connectors, sprinklers. All for \$2,700 OBO. Located in Canby, OR. Call 541-619-2184



**FLINT & WALLING IRRIGATION PUMP:**

230/115 volt, 5-HP. Excellent Centrifugal irrigation pump with dual impellers. C22000 Series. Used 1 season. Includes 35 foot intake hose, dual line fittings with valves and quick release cam/locks. Value of total package \$3,500+, asking \$1,200. Lorane, OR. poynterfarm@gmail.com

**FOR SALE**

8" X 40' Pierce aluminum mainline: riser every 120 feet approximately 6,600 feet, band ring with a case of new o-rings unopened, \$3,00/ foot. Arlington, Oregon. 541-454-2877 or 541-980-4234

**For Sale:** 450' of 8" mainline, 320' of 5" mainline, 150' of 4" mainline, 30 joints of 3" hand-lines with new ends. Terrebonne, OR. 541-419-8370.

**Gheen and Ames pipe:** 3", 5" x 40"; miscellaneous sizes, \$40 to \$65 each. Quantity discounts. Harrisburg, OR. 541-995-1057, 541-517-6282.

**Irrigation Pipe Rentals:** Solid set pipe as low as \$300/ acre per season. Nampa, ID. Nick 208-573-3393



**IRRIGATION PIPES:**

4", \$1.50/ ft., 5", \$1.75/ ft. Lynden, WA. 604-807-5995

**Redi Rain Mainline:** 8" x 30', 40 total pieces, 16 with valves, double hook and latch, very good shape, \$3,600. A&M wheel line, approximately 1,100 feet, 5" wheels, 4" pipe, self leveling heads, \$3,000. Chewelah, WA. 509-936-4380

**WADE-RAIN WHEEL LINE:** 1/4 mile, 4" pipe, levelers, 58" wheels, mover, ready to load, \$5,000. Madera, CA. 559-352-1700

**Wanted Used Traveler or Reel Type Irrigator:** Plus 4" Main Line, Salem, OR. 503-378-1673

**1380 Irrigation Equipment**

**Wanted:** 5" Wade mainline: Also 3" hand line. Silverton, OR. 503-932-8006

**Wanted:** PTO irrigation pump, 400 gallons per minute, 100 pounds pressure. Will consider less volume. Lakeview, OR. 701-570-5600

**WHEEL LINE MOVERS:** (2) Lake hydraulic wheel line movers, no motor, \$900 each. Madera, CA. 559-352-1700

**WHEEL LINES AND MAIN LINE:**

2-1/4 mile, 4" wheel lines, self levelers, newer nozzles, \$4,500/ each. 8" main line, 30', \$128/ 60', \$257. Other sizes \$41, 5" and 6". Burns, OR. 541-589-1266.

**IRRIGATION EQUIPMENT BOUGHT. SOLD. RENTAL.**

**New & Used Parts.**

- Aluminum Pipe
- Certalok
- Siphon Tubes • HDPE
- Sand Media Filters
- Wheel Lines • Pumps



**Stockton Dixon • Turlock**

**Office: (209) 460-0450**  
**Fax: (209) 982-1832**  
www.pacsouthwestirrig.com  
Carlos (209) 481-7677  
Jim (209) 986-0099  
1380-19-4-2/#18

**1390 Packing, Processing Eq.**



**PROCESSING EQUIPMENT:**

Heavy duty SS Allen-Kenasco sorting table, 3- feet wide, variable speed belt, accommodates up to six sorters, for pomme fruit or vegetables, \$4,500 OBO. Also heavy duty SS elevator, 4- foot belt, 19 feet long, great for outside to inside conveyance system, \$5,500 OBO. Trentwell SS pipe, 25 feet lengths, 2 inch x 0.065, TP3041, Rath micro-weld, some angle pieces, \$5/ foot. Central WA. Phone 509-668-8170.

**1410 Logging Equipment**

Allis Chalmers Dozer HD6: winch and arch, \$8,500. Vermonia, OR. 503-429-7503

**Cord King Model 60:** 1,800 hours, manufactured December 2013, includes a conveyor and many extras... (circle saw), John Deere Tier-3, Diesel engine, \$105,000 OBO, Monmouth, OR. 503-551-8684

**Logging Equipment:** "All where is, as is." all or best offer. John Day, OR. 541-575-1525

**SKIDDER**

1979 John Deere: 440B line skidder new mechanical brake, new radiator, fully functional. Entire set of logging chains, \$20,000 OBO. Philomath, OR. 541-487-5191

**1450 Forklifts**

(2) Kesmac 5000R "Piggy-back" forklifts: 3WD, Kubota diesel engines, 1610 hours & 3141 hours, \$6,500 each, or both for \$12,000. Dayton, OR. 971-237-5466



**2009 Hyster H: 155FT,** full cab, diesel, turbo, 3-speed automatic, column shift, dual pneumatic tires, 212" x 2-stage, upright+ side shift, 4-spool valves, hydraulic fork positioners+ side shift, long or P&T forks. Would make good hay squeeze, \$27,000. Gaston, OR. 503-789-3726

**Clark 8,000lb. with Side Shift:** Detroit diesel engine, \$4,600. Ocean Shores, WA. 360-289-3963 or 360-580-8788

**Used Lift Trucks**

Also New & Used Parts All sizes, makes & prices

**LIFT TRUCK SERVICE**  
**888-890-1450**  
forkliftsales.com  
Ellensburg, WA



**HORIZONTAL IMPACT CRUSHER:**

Crusher, screen plant, 2 radial stackers, \$60,000. Medford, OR. 541-601-7451

**MISC Heavy Equipment:**

D6H: EROPS cab, U dozer with tilt ripper, new engine and new hydro pump, \$86,500. D-5N: 2000+/hours, 6 way blade, ripper, \$106,500. Scraper 613-B with cab, \$35,500. Scraper 613-B Rops, \$33,500. Kenworth water truck, 3800 gallon, commercial built, new engine and many new repairs, \$41,500. Salem, OR. 503-362-3055

**1470 Heavy & Indus. Equip.**

(3) Case backhoes: Case 580L, 2WD, \$19,500; Case 590 Super L, 4x4, \$23,000; Case 580 Super M, 4x4, extendahoe, under 1000 hours. Cottonwood, ID 208-983-8100



1987 D6H: 6392 hours, undercarriage 65%, straight blade and tilt, winch and Fairlead, guarding and rock guards, new paint, clean machine, \$52,500. Gaston, OR. 503-789-3726



1991 Hitachi Excavator EX 150: 8'6" stick, 35" digging bucket, wedge Q.C., guarding- cab & hood. Hydraulic link thumb, 8,458 hours, 38,000 weight, good maintenance, needs nothing, \$31,500. Gaston, OR. 503-789-3726

1994 CASE 580 Super-K Backhoe: Extendahoe, new tires, excellent condition, 2365 hours, \$15,000. Union, OR. 541-562-1444.



1996 KoBeLco SK120LC: 3,723 hours, rebuilt engine, long block & turbo. Fast, light machine. Pre-computer, (2) buckets, \$26,500. Gaston, OR. 503-789-3726



**2000 WELDCO-BEALS MULCHER:**

36" disc, fits 140 size excavator or larger, cuts grass, brush, small trees. Rebuilt and ready to go! \$5,900. Rickreall, OR. Call 503-507-7230.

**2006 Bobcat Brushcat 72:**

high flow mower, \$4,800. 3-point side digger for digging bareroot trees, \$3,500. All in excellent shape. Gresham, OR. 503-209-8657, Tim.

2007 Globe Low-Boy: Air ride, hub pilot wheels, Honda hydraulic disconnect, 43' x 102", 40 ton, covered tandems, chrome 22.5, outriggers, very low miles, \$35,000? Fort Rock, OR. 541-576-3595

**40 Ton Fontaine Lowboy:**

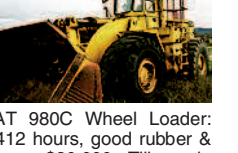
9,412 hours, good rubber & shape, \$30,000. Tillamook, OR. 877-842-9408

**BOOM MOWER**

Tiger Saber Tooth Mower: Model 18A5-2, 48" flail cutting head, low hours, ready to work, \$10,000 OBO. Langley, WA. 360-321-1624 mallard@whidey.com

**Boulders for Sale:**

\$15/ton, you haul, we load, 503-991-2883



**Champion Super Pack 540:**

vibratory roller, 54" drum, pad foot shells, new tires, 1600 hours. Excellent condition, \$18,000. Miller Bobcat welder/ 8500 watt generator trailer mount, 50' leads, \$2,700. Oakland, OR. 541-459-3996

**Cottonwood Highway District (ID):**

Will be accepting bids until 5/12/16 for a 2007 Case 570MXT skid loader, 4x4, 3pt., PTO, 1800 hours. Cottonwood Highway District has the right to reject any or all bids. For pictures and more info call 208-507-0580. For bid information call 208-962-3161. Ask for our clerk Tim.



**MISC Heavy Equipment:**

D6H: EROPS cab, U dozer with tilt ripper, new engine and new hydro pump, \$86,500. D-5N: 2000+/hours, 6 way blade, ripper, \$106,500. Scraper 613-B with cab, \$35,500. Scraper 613-B Rops, \$33,500. Kenworth water truck, 3800 gallon, commercial built, new engine and many new repairs, \$41,500. Salem, OR. 503-362-3055

**You advertise.... it SELLS!!!**

"After running an ad in *two* California publications and getting no response, I placed an ad with Capital Press for eight weeks.

The first week I received 3 calls and sold over half of the eleven items I listed. Before the listing ended, I had sold all but a few odds and ends.

The big surprise was that *all the calls but one* were from my local area here in California!"

Phillip Wilson  
Chico, CA

**Capital Press**  
The West's Ag Weekly

**CAPITAL PRESS CLASSIFIED ADVERTISING**  
1-800-882-6789 • ONLINE 24/7 365  
www.capitalpress.com

**Get up. Drink up. Catch up.**

**Capital Press**  
The West's Ag Weekly

**Clarifies pesticide rules**

**Riding wine**

**Stay on top of the latest Agricultural news.**

**Capital Press**  
The West's Ag Weekly

- Print
- Online
- Mobile
- Facebook
- Twitter

**800-882-6789**  
www.capitalpress.com

**NORTHWEST DAIRY SERVICE**

**NOW SELLING IRRIGATION SYSTEMS!**

**DAIRY SALES**

- Stalls
- Headlocks
- Troughs
- Gates
- Waterbeds
- Pasture Mats
- Alley/Parlor Rubber
- Pumps
- Separators
- Scraper Systems
- Cow Brushes
- Float Valves
- Lights
- Fans
- Automation

**IRRIGATION**

- System Design
- Drip Systems
- Automation
- Pod Systems
- Irripod/Irriland
- Toro Ag
- Fresno Valve
- Dura Gheen
- Berkely Pumps
- Stocking Nelson Gun Parts & PVC

**Visit us at:**  
**Northwest Dairy Service**  
9525 Rickreall Rd • Rickreall, OR 97325  
www.nwdairyservice.com • 503-831-9770

**ERNST IRRIGATION**

"Ernst Irrigation experts understand your water needs. Let our experienced staff assist you with all your water quality and quantity needs."

**SCREAMIN' DEALS**  
CONSIGNED • USED • NEW PUMPS in stock for sale!

STOCK#	MODEL	SPECS	PRICE
<b>CONSIGNED PUMPS</b>			
	CORNELL 30HP 2-1/2HM30 8"	250gpm @60psi...	\$1,000
	CORNELL 50HP 3YB50 7-7/8"	500gpm @ 105psi...	\$2,000
<b>USED PUMPS</b>			
	BERKELEY 20HP B21/JZPL20 7-11/16"	250gpm @ 90psi...	\$1,000
	CORNELL 25HP 4WB25		<b>SOLD TO YOUR BUDDY</b>
1001879	BERKELEY 15HP B21/JZPL 6-15/16"	250gpm @ 73psi...	\$1,900
	Slightly used; full warranty		
1002048	BERKELEY 5HP B1WP 3PH	50gpm @ 73psi...	\$1,325
1002863	CORNELL 40HP 2.5YH40 8.31"	400gpm @ 115psi...	\$2,000