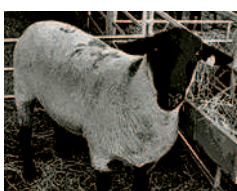


210 Auction Sales



90TH CLOVERDALE RAM SALE:
Saturday, May 7th, 2016, Citrus Fairgrounds in Cloverdale, CA. Meat sires, ewe sires, crossbred rams & white faced yearling ewes- Suffolks, Dorsets, Corriedales, Rambouillets, Shropshires, & Hampshire/ Suffolk X-breds. 8:00AM- preview of rams & ewes, 11:30AM- Lamb BBQ, 1:00PM- Auction. For more information, contact Sierra Bruhn, Sale Manager, 707-696-9002 or Jim Lewers, President, 707-696-3555.

210 Auction Sales

CAPITAL PRESS CLASSIFIEDS CALL 1-800-882-6789 FAX (503) 370-4383 www.capitalpress.com

Chamness Auctions LLC
5th Annual Spring Consignment Sale
3028 Lower Mill Rd/Odell OR
Previews Friday 4/15, 8a-5p
AUCTION Sat. 4/16 at 9:00a
Logging, construction, farming, tools, forklifts, vehicles, household, yard/garden, city & county surplus and much more.
Online Auction via PROXBID
For more information
www.chamnessauctions.com
210-14-3-1/#8



Shiny Red Ride
Low miles, a little rough on the outside but runs great.

Find great rides in class 1600
Capital Press
1-800-882-6789
www.capitalpress.com

CHAMNESS AUCTIONS LLC
Builder City Liquidation
8905 N. Vancouver/Portland, OR
Previews Thurs., April 21 • 9-5
AUCTION
Fri. & Sat., April 22 & 23
Starts at 8:00am both days
Cases of building supplies, household, yard/garden, plus doors, windows and so much more.
EVERYTHING MUST GO!
For more info, go to:
www.chamnessauctions.com
210-16-2-2/#8

Timed Online Auction For Duane Leidholt Estate
Sunday, May 08, 2016 Miles City, MT Preview Dates Online



2014 JD 6150R Row Crop Fully loaded. Only 111 hrs
2014 JD 1720 12 Row Planter, GPS, Only 509 acres
2014 Sunflower 1436 29ft. Disk w/ 300 acres of use
M&W Earth Mover 2200F sn. 10048, 20 ft. 9 shank
M&W Earth Master Disc Ripper Model 1875; Pickett Hvtst. Parma 30ft. Roller harrow; Brillion 16 ft. Roller Harrow; JD 4455 w/ 740 Loader; JD 2950; JD 4010 Ford 8770 Tractor; Ford 9880; JD 7500 Forage Hvtst. Over 225 Pieces of Machinery Details at www.SmithSalesCo.com 406-234-7355 SE Montana
Our 16th Spring Fever Machinery Auction

BAR NONE AUCTION
HEAVY EQUIPMENT AND COMMERCIAL TRUCK SALE
SATURDAY MAY 21ST AT 8:30 AM
AUCTION INFORMATION:
9400 GALENA STREET, RIVERSIDE, CA 92509
PREVIEW DAYS: MAY 19TH & 20TH 8AM-5PM
Now Accepting Consignments PUBLIC AUCTION | ONLINE BIDDING | FREE REGISTRATION
866.372.1700 BARNONEAUCTION.COM

210 Auction Sales

RELOCATION AUCTION RODGERS INSTRUMENTS
Sat., April 23rd & Sun, April 24th
9:00AM • Preview April 21st & 22nd 10AM-4PM
1300 NE 25th Ave • Hillsboro, OR 97124
120,000 S.F. of Warehouse, GMC Topkick 24' Box Truck, Gas, Propane, Electric Forklifts, Large Trash & Cardboard Compactors, Metal Shop, Wood Working Shop, Lots of Pallet Racks, Lots of Shelving, Large Amount of Tools, 100's of New Speakers, Lots of Rolling Carts, Office Furniture, Computers, Lathe, 2 Milling Machines, Brake Press, Metal Shear, Acorn Cable, Several Chop Saws & Planers, Lots Of Woodworking Equipment.
10% BUYERS FEE • FOOD ON SITE • CASH, CHECK, CC'S
CBL Auctions • 971-219-6520
www.oregonauctioneer.net

FARM EQUIPMENT AUCTION
SUNDAY APRIL 24, 2016
OWNER: TRAILS INC.
Located: From Payette ID 5.5 miles North on Hwy 95 to Cox Rd then East 1/2 mile to 1734 Cox Rd, Weiser ID 83672.
Sale starts 11:00 AMMT
TERMS: cash or bankable check sale day. No credit cards. Everything sells as is where is.
AUCTIONEERS NOTE: This a 115 year old ranch. Finding new items every day.
TRACTORS: MF 8120 MFWD dyna shift trans, 3 hyd remotes, row crop axles, deluxe cab, 14.9 X 46 rubber, 3700 hrs • MF 383 hi low standard trans, 2 hyd remotes, deluxe cab, 14.9 X 38 powershift rubber • MF 374 S MFWD standard trans, 2 hyd remotes, 3pt orchard style • Landini 6530 F MFWD standard trans, 2 hyd remotes, 3pt orchard style • MF 360 standard trans, 1 hyd remote, orchard style • MF 135 gas standard trans, 3pt orchard style • MF 35 gas standard trans, multi power 3pt orchard style • MF 35 gas standard trans, 3pt orchard style • MF 3165 w/Edwards fork lift • MF 135 gas w/Edwards fork lift
TRUCKS: 1991 Chevy single axle 366 V8 5spd 2spd w/16' comb bed & hoist • 1981 GMC single axle Detroit diesel 5spd 2spd 16' comb bed & hoist • 2002 Chevy 1/2 ton 4X4 pickup • 1986 Chevy 1 ton w/12' comb bed & hoist • Yamaha Bruin 350 4X4 4 wheeler • Yamaha RC 42 PTO rotary mower.
Selling Trailers; Hay Equipment; all types of equipment; Planters; Livestock equipment; Shop Equipment and much more. Please check our website for a full listing.
BAKER AUCTION CO., LLC
1-800-650-5808
www.bakerauction.com

210 Auction Sales

1st Annual Horsesdrawn Vehicle & Equipment Auction

April 22 & 23, 2016
Preview 8-10 am • Auction @ 10 am
Yamhill County Fairgrounds • McMinnville, OR
503-307-4371 • PacificOverlandExpo.com

WOODBURN AUCTION YARD
503-981-8185
Next 2-day consigned machinery sale: May 14th & 15th
Specializing in FARM AUCTIONS
Farm or Business Sale Management for Estates & Bankruptcies
Miscellaneous Auction Every Tuesday • 9AM
597 S. Pacific Hwy • Woodburn, OR 97071
1/2 mile south of Woodburn, OR on Hwy. 99E
www.woodburnauction.com

ONLINE AUCTION
Fri. Apr. 29th — Mon. May 2nd
FARM EQUIPMENT
G.A. HANKS & SONS retire WILLOWS, CA
TRACTORS-CRAWLERS-FARM IMPLEMENTS RICE/GRAIN, ROW CROP/HAY EQUIPMENT AND MORE!

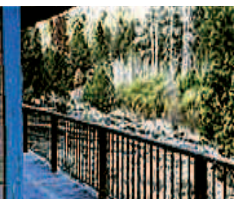
CONTACT US NOW TO SELL YOUR EQUIPMENT
Learn more at www.AUCTION-IS-ACTION.COM
PUTMAN AUCTIONEERS INC.
KEVIN CA BOND 7238559 JOHN
(530) 566-5083 • (530) 701-8596

240 Mobile & Manu. Homes



1984 Blazer Modular Building: 24'x60', former GE Capital mod. Updated roof, very well maintained. Includes blocking & tires. Must see. \$22,000. Woodburn, OR. 503-951-1188

270 Recreational Property



CABIN FREEMONT FOREST:
(638) acres in Freemont Forest with trout stream and cabin, surrounded by government land, 1 1/2 hours from Bend, OR. Absolute end-of-the-road private! Off the grid, but set up for convenience. **Warning:** Kids and grandkids won't let you ever sell it! \$699,900. See drone-video: go to YouTube...Nick Finn...Get-Away Cabin On Trout Stream For Sale. Jack Rinn, Broker INVESTWEST Real Estate 541-480-7215

SAVINGS ARE HOT!
at Capital Press
1-800-882-6789
www.capitalpress.com

PUBLISHER'S NOTICE
All real estate advertising in this newspaper is subject to the Fair Housing Act which makes it illegal to advertise "any preference, limitation or discrimination based on race, color, religion, sex, handicap, familial status or national origin, or any intention to make any such preference, limitation or discrimination." Familial status includes children under the age of 18 living with parents or legal custodians, pregnant women and people securing custody of children under 18.
This newspaper will not knowingly accept any advertising for real estate which is in violation of the law. Our readers are hereby informed that all dwellings advertised in this newspaper are available on an equal opportunity basis. To complain of discrimination call HUD toll-free at 1-800-669-9777. The toll-free number for the hearing impaired is 1-800-927-9275.

The Northwest's Best Auctions Are In The
Capital Press
and online!
Go to Marketplace.CapitalPress.com and search for "Auctions" after 5:00 PM every Friday.
May vary depending on holidays.

220 Farm Seller.com

320 Rentals, Leases

For Lease Yonna Valley Farm: (380) acres irrigated with (3) good wells, (113) acres alfalfa, (52) acres grassy alfalfa, (40) acres annual rye grass, balance of open ground in carrots, potatoes and wheat last year. Dairy, OR. 541-281-2947
WANTED Farm Ground to Rent/ Lease in Eastern WA. 509-750-9795

220 Farm Seller.com

220 Farm Seller.com

220 Farm Seller.com

220 Farm Seller.com

220 Farm Seller.com

220 Farm Seller.com

220 Farm Seller.com

220 Farm Seller.com

220 Farm Seller.com

220 Farm Seller.com

220 Farm Seller.com

220 Farm Seller.com

220 Farm Seller.com

FarmSeller www.farmseller.com
(503) 364-4798 • 1-800-882-6789

- Independent Agricultural Real Estate Website
- Nationwide Exposure
- Top Positions on Yahoo & Google under "Farms For Sale"

THE LARGEST FARM WEBSITE IN THE WEST!

OVER 70 AGENTS AND 1,080 LISTINGS

Selling Rural Property?
List with these Farmseller member agencies:
• 6 Color Pictures Per Listing • Unlimited Listings Per Agent • Rotating Featured Listings • Wide Range of Search Criteria • Mortgage Calculator

CALIFORNIA CHINO Vander Dussen & Haringsma 909-969-8989 HOLLISTER San Benito Realty 831-637-5563 IDAHO BOISE Knipe Land 208-345-3163 FRUITLAND Tri-Cities Real Estate 208-452-4334 MALAD Flinders Realty & Exchange 208-766-7653 TWIN FALLS Robert Jones Realty Inc. 208-733-0404 MONTANA MISSOULA Stelling Ranch & Land BILLINGS Rocky Mtn. Ranch Real Estate 406-259-6666 NEVADA ELKO Allie Bear Realty 775-738-8534	OREGON ALBANY Keller Williams Farm & Ranch 541-979-0118 AUMSVILLE RE/MAX Advantage Plus 503-245-9090 BAKER CITY Intermountain Realty 541-523-4434 BEND Cascade Sotheby's International Realty 541-923-1376 Coldwell Banker Morris Real Estate 541-480-2966 BONANZA Summit Realty 541-545-1510 BURNS Jett Blackburn Real Estate 541-573-7206 CHILOQUIN Crater Lake Realty 541-783-2759 CLACKAMAS RE/Max Preferred 503-659-1550 DALLAS Windermere Western View DAYVILLE Duke Warner Realty	HERMISTON RE/MAX Cornerstone 541-289-5454 JOHN DAY Eastern Oregon Realty 541-575-2121 JOSEPH Real Estate Associates 541-432-4060 Timberline Realty 541-432-1234 Wallowa County Brokers 541-432-3131 KIMBERLY Mossy Oak Properties 541-934-2946 LA GRANDE Century 21 Eagle Cap Realty 541-963-1203 Ranch-N-Home Realty 541-963-5450 McMINNVILLE Willamette West Realtors 503-868-7173 MEDFORD Oregon Opportunities 800-772-7284 Land and Wildlife 208-870-1757	MOLALLA RE/MAX HomeSource ONTARIO Waldo Real Estate 541-889-8160 PENDLETON Whitney Land Co. 541-278-4444 REDMOND John L. Scott 541-548-1712 Jeff Larkin Realty 541-480-5606 ROSEBURG Hawks & Co Realtors 541-673-6499 SALEM Agri-Business Real Estate 503-371-6409 Coldwell Banker Mountain West 503-930-2651 Sundance Realty 503-580-8664 SANDY John L. Scott Real Estate 503-826-9000 SILVERTON Northwest Oregon Realty Group 503-873-8600	THE DALLES Columbia River Properties 541-296-1026 VALE Agriland's Real Estate 541-473-3100 WILSONVILLE Wolf Properties NW TEXAS DIMMITT Scott Land Co. 800-933-9698 WASHINGTON BREWSTER Land Company 509-689-3610 PASCO Farmers National Co. 509-539-3161 RANDLE Concept Realty 360-497-7400 SPOKANE Hatley/Cobb Farmland Real Estate 509-624-4408
--	--	---	--	---

Buying Rural Property?
Check farmseller.com
• Ranches • Ranchettes • Land & Acreage • Horse Properties

Directory Of Premium Agency Members!

Bill Hekman, Jr. Sundance Realty Salem, OR (503) 580-8664	Mark Jones Robert Jones Realty Twin Falls, ID (208) 733-0404	John Collins Ranch-N-Home Realty La Grande, OR (541) 963-5450	Tim Cobb Hatley/Cobb Farmland Real Estate (509) 624-4408
Andy Alsko Coldwell Banker Mountain West Salem, OR (503) 930-2651	Jeff Larkin Jeff Larkin Realty Redmond, OR (541) 480-5606	Scott Lamb Waldo Real Estate Boise, ID (208) 739-2119	Dee Anne Mossman Waldo Real Estate Boise, ID (208) 707-4444
Mary Ann Stoller Willamette West Realtors McMinnville, OR (503) 868-7173	Jim Leininger Vander Dussen & Haringsma Chino, CA (909) 969-8989	Allie Bear Allie Bear Realty Elko, NV (775) 738-8534	Kirk Makin Wallowa County Brokers Joseph, OR (541) 432-3131
Gloria Hahn RE/Max Preferred Clackamas, OR (503) 659-1550	Jason Juker Knipe Land Company Boise, ID (208) 631-9046	Janey Knipe Knipe Land Company Boise, ID (208) 345-3163	Tom Gill Knipe Land Company Mountain Home, ID (208) 860-0776
Patricia Mitchell Knipe Land Company Nampa, ID (208) 463-4723	John Knipe Knipe Land Company Boise, ID (208) 345-3163	Steve Brooks Knipe Land Oregon, LLC Richland, OR (866) 993-6133	Curtis Hitchcock Knipe Land Company Boise, ID (208) 866-2825
Julie Mansfield-Smith Copper Creek Land Co. (541) 934-2946	Ken Wick Real Estate Associates Joseph, OR (541) 432-4060	Judy Willis Real Estate Associates Joseph, OR (541) 432-4060	Richard Capron Tri-Cities Real Estate Fruitland, ID (208) 452-4334
Steve Helms Keller Williams Farm & Ranch Albany, OR (541) 979-0118	Kent Coppinger Century 21 Eagle Cap Realty La Grande, OR (541) 963-1203	Jerry Franklin Eastern Oregon Realty John Day, OR (541) 575-2121	Claesne O'Connor Timberline Realty Joseph, OR (541) 432-1234