

**1470 Heavy & Indust. Equip.**

Clark 8,000lb. with Side Shift: Detroit diesel engine, \$5,800. Ocean Shores, WA. 360-289-3963 or 360-580-8788

**Crusher Equipment For Sale:** 20x36 Universal portable jaw crusher; 6x16 LJ screen. (3) conveyors. 40' container with all the electrics. 8240 Terex CAT: blade and ripper. 980 B CAT loader with 6-yard bucket. 26B Case loader, 4.5-yard bucket. 350 Ingersoll rock drill with 1050 ingersoll compressor. 1971 Mack 10-yard dump truck. 1992 Kenworth long logger with peerless long log trailer, 3406 CAT B motor, 15-speed transmission, 402 Eaton rear ends. Winston, OR. 541-784-8680

Cumberland Model 584 Rigid Plastic Grinder: 16x20" feed opening, 20 HP electric motor, blower and cyclone. Price negotiable. Moxee, WA. 509-930-2335

**D8H-46A U-Blade 2-Barrel Ripper:** Long line hours, good undercarriage, strong machine. High Horse #12994, reduced \$35,000. Enterprise, OR. 541-263-0132



Hitachi Excavator UH07LC-7 144-25873: Azuzu Engine, PAPE Machinery diagnostic available, very straight, 1,629 hours, 40' bucket, (2) new batteries, new oil cooler, used on farm, \$21,000. Gaston, OR. Judie 503-985-3233



1992, International Harvester, compactor garbage truck: DT-466 diesel, (Allison), 193K mile, good working order \$4,750. McMinnville, OR 503-550-7625

Complete Water Treatment Plant: reverse osmosis, 515,000 gallons per week. Alan Bradley switch gear, all tanks and high pressure pumps, stainless steel air stripper. Was new in 2003, costs \$2.5 million. For sale, all offers considered, complete package \$55,000. Creswell, OR. 541-912-7807 nathan066@icloud.com

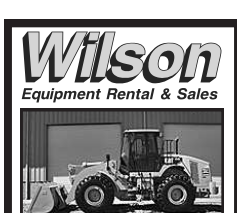


1982 KOMATSU 355-3 DOZER: New heads, new pistons and liners. 15' blade, 5' ripper. Good condition, \$35,000 OBO. Lakeview, OR. 541-891-8617

**1470 Heavy & Indust. Equip.**

**Quality Used EQUIPMENT & ATTACHMENTS**  
• INDUSTRIAL  
• COMMERCIAL  
Please visit our Website [www.amtractor.com](http://www.amtractor.com) for a complete list of Machines and Attachments

**American Tractor**  
Our Toll Free # 888-499-8980  
Call Cameron Noble or Eric Hunt  
Central Point, OR 15-7#85



2010 Cat 950H  
Erops A/C and heated cab, hyd coupler, GP bucket, 9,300 hrs, ride control, good tires, nice machine.....\$119,500

2009 Cat 966H  
Erops A/C and heated cab, hyd coupler, GP bucket, ride control, 9,300 hrs, good tires, nice machine.....\$144,500

2007 Cat 980H  
Erops A/C and heated cab, GP bucket, ride control, good radial tires, 13,000 hrs, nice tight machine.....\$172,500

2006 Cat 325DL  
A/C and heated cab, hyd. thumb and coupler, aux. hyd., good U/C, 7,200 hrs nice machine.....\$97,500

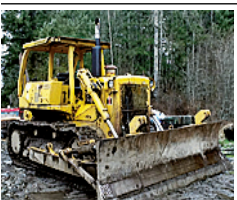
1979 Cat D8K  
U/blade, M/S ripper, sweeps, good U/C, rock guards, recent in-frame on engine, been maintained very well.....\$47,500

Financing Available  
Trades Accepted

**Randy**  
541-830-3966  
Cell# 541-944-5067  
White City, OR  
[www.wilsonsequipment.net](http://www.wilsonsequipment.net)

**1470 Heavy & Indust. Equip.**

D3 CAT: with winch, good condition, \$15,000 OBO. Ellensburg, WA. 509-607-3907



International TD20E: with tilt angle blade & winch. Tractor has approximately 4000 original hours, 300 hours on new rails & rollers. Excellent condition, \$22,000. Graham, WA. 253-377-2362, dklcn316@yahoo.com

John Deere 450G: dozer, 1000 hours, \$35,000 OBO, to settle estate. Olympia, WA. 360-701-3210

John Deere 550: 6 way, sweeps, 80 percent undercarriage, ready to work, \$11,300 with brush attachment. Dalles, OR. 503-931-9585

Like new John Deere 650J crawler: 1290 hours, 6-way blade, rippers and sweeps \$111,900. Eugene, OR. 541-688-1441



2011 LOFTNESS AXH73 MULCHER:  
Nearly new, heavy duty, fits large Skid Steer, 80 - 100 HP, GPM Range 22 @ 3300 psi to (40) @ 3500 psi, 150 hours, 6' Swath, quick attach to your Skid-steer! \$14,000. Rickreall, OR. Call 503-507-7230

**MISC Heavy Equipment:**  
D6H: EROPS cab, U dozer with tilt ripper, new engine and new hydro pump, \$86,500. D-5N: 2000+/- hours, 6 way blade, ripper, \$106,500. Scrapper 613-B with cab, \$35,500. Scrapper 613-B Rops, \$33,500. Kenworth water truck, 3800 gallon, commercial built, new engine and many new repairs, \$41,500. Salem, OR. 503-362-3055

**New 8' Brush Rakes:** with mounting brackets. \$1,050 each. Clackamas Tractor, Clackamas, OR. 503-655-1125

**NEW RENTING! CAT-D8T SU**  
w/3-shank mounted ripper  
ATMACHINERY.com  
888-461-0625  
Five Points, CA 15-2#18

**CASE INDUSTRIAL PARTS**  
We sell genuine, after market, and used CASE parts at discount prices nationwide. Call For Free Catalog.

**CENTRAL EQUIPMENT**  
AFTER MARKET & USED PARTS  
Medford, OR  
(888) 593-8749

**1480 Farm Equipment Parts**

**Nampa Tractor Parts**  
Most Parts 1/3 New  
(208) 467-4430  
Nampa, ID  
1480-14-5-2#17

**Call For All Your Parts Needs**  
Check Out Our New Arrivals on YouTube



**JUST IN FOR PARTS ONLY**

- (2) JD 8230 MFWD IVT, Weights, Duals
- JD 8300 MFWD, PS, Duals
- JD 7800 MFWD, PS, Weights, Duals

Celebrating 26 years in the agricultural machinery business.

Our yard has 1/5 miles of road, with machinery on both sides. FREE TOURS GIVEN DAILY.  
Call Toll Free: (888) 372-4020  
[www.nyssatractor.com](http://www.nyssatractor.com)  
sales@nyssatractor.com  
**Nyssa Tractor & Implement**  
Nyssa, OR 15-1#17

**NEW, USED, AND REMAN PARTS**  
TOLL FREE: 1-877-928-1646  
32427 OLD HWY 34, TANGENT, OR 97389

**New & Reman J.D. Powertech Engines**  
4.5L / 99HP \$9,500  
6.8L / 175HP \$16,000



**1470 Heavy & Indust. Equip.**



CAT 910 loader: SN 80u6857, \$18,500. Tillamook, OR. 877-842-9408

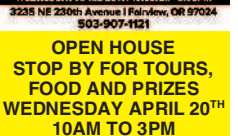


**2000 WELDCO-BEALS MULCHER:**  
36" disc, fits 140 size excavator or larger, cuts grass, brush, small trees. Rebuilt and ready to go! \$9,000. Rickreall, OR. Call 503-507-7230,

**2006 Bobcat Brushcat 72:** high flow mower, \$4,800. 3-point side digger for digging bare-root trees, \$3,500. All in excellent shape. Gresham, OR. 503-209-8657, Tim.



**OPEN HOUSE**  
STOP BY FOR TOURS, FOOD AND PRIZES  
WEDNESDAY APRIL 20TH 10AM TO 3PM  
3235 NE 230TH AVE FAIRVIEW, OR.  
503-907-1121  
BOBCAT OF PORTLAND  
Meet your new Bobcat Team



Wanted: Belly Dump, older crossgrate, pup trailer preferred. Banks, OR 503-324-4006

**503-668-5024**  
**503-407-9062**  
"We Buy Equipment"

**EXCAVATORS**  
JD 992 ELC, quick change, thumb.....\$24,500  
Cat EL200, thumb, quick change, 2 buckets.....\$24,500

**Komatsu PC 100-6, 2** buckets, thumb, hydraulic quick change, brush rake, 7,000 hrs.....\$29,500

**2007 JD 350, 2** buckets, thumb, quick change, blade, rubber tracks.....\$17,950

**DOZERS**  
International TD25C, Rippers, 4-way blade, power shift, ROPS.....\$19,500

**Komatsu D65E,** powershift, ROPS, twin tilt, 6 way blade, outside arm low hours.....\$18,500

**SKIDSTEERS**  
2005 Takeuchi TL140, track, skidsteer, hydraulic quick change.....\$24,500  
buzzardsequipment.net 15-7#8

**1480 Farm Equipment Parts**

Discount Tractor Parts: new, used, rebuilt, local warehouses. Garfield, WA. Call 800-967-8185 or order online at: [www.drapertractor.com](http://www.drapertractor.com)

WANTED Cast Iron Bracket: for auto-trip on 14 Case IHC subsoiler, 131775C1-L. Cornelius, OR. 503-969-5977

**1490 Antique Farm Eq. & Parts**  
1945 John Deere A Tricycle: Restored, \$9,000. Shady-Cove, OR. 541-821-0694

**1520 Hay Equipment**  
#1 Bale Wagons: Buy, Sell, New Holland 2&3 wide self-propelled, pull-type models, parts, tires. Caldwell, ID. 208-880-2889 [www.balewagon.com](http://www.balewagon.com)

1995 Road Runner Hay Squeeze: \$75,000. Warden, WA. Call Brad 509-546-7435.

1997 New Holland: (590) 3x3 baler. Many updates, good condition, \$17,500 OBO. Yamhill, OR. 503-537-4821

1999 New Holland HW300 Swather: 14' header, (1) owner/ operator, 3965 hours, \$29,900. Kuna, ID. 208-861-1244 or 208-362-8962

2004 New Holland BW28: narrow bed with Mill-Stak big bale clamp, 5,100 hours, good tires, great working condition, \$92,000. Lodi, CA. 209-810-3599



2010 New Holland BR7090 Round Baler: excellent condition, well-maintained, less than 1700 bales, 18,500. Lakeview, OR. 541-219-0141

370 Freeman 3-Tie Balers: (5) Air Cooled, (1) water cooled, (2) Self Propelled, \$10,500- \$15,500. Warden, WA. Call Brad 509-546-7435.

Freeman 370 Baler: Like new, only baled (27,000) bales, recent \$7,600 overhaul and new paint, hydro, 16" chamber. Best offer. Junction City, OR. 541-998-2429

**FREEMAN BALER:**  
FREEMAN 1592 BALER, GOOD CONDITION. ESCALON, CA. 209-531-7433

**Hesston 1340:** 12' rotary cutter, awesome in hard to cut grass, used only 5 seasons on small operations. Great shape, \$7,000. Older grapple hay handler with half rotation and 4' extension. \$2,000. Selah, WA. 509-930-5696

John Deere 348 Baler: 2-string, field ready, hydraulic shift, \$8,500. Wapato, WA. 509-945-1086

John Deere 450, Sickle Mower: 5', good condition, best offer, Richard 707-678-2436



Krone 1290HDP High Speed 3x4 Baler: 8000 bales, always stored. Very good condition, \$110,000. McMinnville, OR. 503-435-9437

"...Sold both bulls second week. Thanks!" Tiara Farm Port Townsend, Wash. You sell too at 1-800-882-6789.

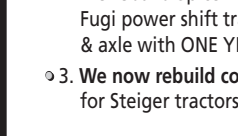
**1480 Farm Equipment Parts**

**NEW & USED OLIVER & CLETRAC**  
Crawler Parts Our Specialty  
ZIMMERMAN OLIVER-CLETRAC  
1450 Diamond Station Rd. • Ephrata, PA 17522  
1-800-717-738-2573  
Fax 717-733-3529  
[www.olivercletrac.com](http://www.olivercletrac.com)

**BIG TRACTOR PARTS, INC.**  
~ GEARED FOR THE FUTURE ~  
**STEIGER TRACTOR SPECIALIST**  
1. We are your source for new & used Steiger drivetrain parts Series 1 - 9300 Series.  
2. We rebuild Spicer manual transmissions, Fugi power shift transmissions, dropboxes & axle with ONE YEAR WARRANTY!  
3. We now rebuild computer control boxes for Steiger tractors 1982-1999.  
800-982-1769  
[www.bigtractorparts.com](http://www.bigtractorparts.com)

**1520 Hay Equipment**  
**CLERF** HAY EQUIPMENT  
Manufactured by Harvest Co. FABRICATORS INC.  
[www.clerfhayclamp.com](http://www.clerfhayclamp.com)

**Clamps Custom Fit to Carriage Mounts & Loaders**



We Also Rebuild & Repair All Brands of Hay Clamps  
888-338-0077 • [info@clerfhayclamp.com](mailto:info@clerfhayclamp.com)  
Ellensburg, WA 15-2#24

**1520 Hay Equipment**

Kuhn 4 Basket Hay Tedder: very nice, field ready, \$3,995. 36' round bale mover, ready to go, will haul 6' bales, \$2,995. Lynden WA. 360-354-4546



McHail Fusion Baler: Combination wrapper, field ready reconditioned, \$45,000 OBO. Mt. Vernon, WA. 360-661-3231

**New And Used Parts:** for all models New Holland bale wagons. Largest inventory in North America. Sod Busters Sales, Polson, MT. 877-735-2108 or 406-883-2118

New Holland 1032: refurbished, like new. May take trade and finance. Caldwell, ID. 208-880-2889, Jim Wilhite.

New Holland 1036: refurbished, cab controls, like new, may take trade and finance. Caldwell, ID. 208-880-2889, Jim Wilhite.

New Holland 1037: refurbished, cab controls, like new, may take trade and finance. Caldwell, ID. 208-880-2889, Jim Wilhite.

New Holland 1068: Bale Wagon, 460 gas engine, four speed transmission with two speed axle, good condition, field ready, \$18,500. Okanogan WA. 509-322-4447 or 509-846-3529.

New Holland 1078: excellent condition, refurbished, may take trade and finance. Caldwell, ID. 208-880-2889, Jim Wilhite.

**960 MACDON 25' DRAPER HEADER:**  
Fits 9300 series MacDon, triple delivery, single reel, single sickle, no cart. Asking \$4,500 OBO. Odessa, WA. 509-988-0721

**New Holland 1085 Bale Wagon:** \$32,000, Beaver-ton, OR. 503-320-4142

BW 20A: 2,000+ hours, nice, one owner. May take trade and finance. Caldwell, ID. 208-880-2889, Jim Wilhite.

**New Holland 1114 Swather:** 14' header, 4 cylinder ford diesel engine, \$6,500. New Holland MH1048S Bale Wagon new rebuilt gas engine/clutch, one season new hydraulic pump, 5x2 standard transmission, \$13,500. Gooding, ID. 208-420-2466 email pattiafflick@cs.com

**NEW HOLLAND 216 BASKET RAKES:** Motors rebuilt, working hydraulics, field ready! \$7,000. Looking for wheel rakes. Burns, OR. 541-589-1266

**New Holland 216 Rake:** \$4,000, New Holland Chopper 892, \$2,000, New Holland Chopper 890, \$2,000 or \$6,500 for all. Scio, OR. 503-930-2738.

New Holland 499 Pivot Tongue Mower Conditioner: with manuals and some spare parts, \$6,600 OBO. Union, OR. 541-562-1194



New Holland BR7090 Twine Round Baler: wide, hydraulic pickup flotation tires, good condition, \$15,000. South Eastern, OR. 541-219-0741

**1480 Farm Equipment Parts**

**Orchard & Vineyard Equipment**  
Weiss McNair Filbert Sweeper: 35 HP, Wisconsin 7.5' tinebar, PS, extra parts, \$6,500 OBO. Weiss McNair B85 3-point Nut Blower: Like new, \$1,850. All in excellent condition, all indoors since new. Near Sumas Border, CAN. 604-794-7139

**RCO Baits**  
Gophers • Squirrels  
Voles-Moles  
Dealer Locator  
1-800-214-2248  
Harrisburg, OR 15-4#85

**Looking for ORCHARD/VINEYARD PROPERTY? Go to Class. 387**  
Capital Press  
The West's Ag Weekly  
[www.capitalpress.com](http://www.capitalpress.com)  
1540-1-53-1#13

**1560 Tractors**  
#1 Massey Ferguson Tractors: Oregon City, OR. 503-781-0846

**1520 Hay Equipment**  
New Holland H9880: 2,100+ hours, good condition, may take trade and finance. Caldwell, ID. 208-880-2889, Jim Wilhite.

New Holland H9880: 5 hours, excellent condition, may take trade and finance. Caldwell, ID. 208-880-2889, Jim Wilhite.

**NEW HOLLAND SWATHER HW325:** 2000 hours, sickle, \$35,000. Alturas, CA. 530-640-4701

**Large Supply of Rebuilt New Holland Bale Wagons:** Also buying New Holland bale wagons. Sod Buster Sales, Polson, MT. 406-883-2118

**Big Bale Setup:** John Deere tractors, Hesston balers, New Holland swather, Allen rake, HM load, trucks. Consider trades. Prineville, OR. 541-410-4367

**Orchard Equipment For Sale:** Tractors, sprayers, mowers & lots more [www.morganauctioneers.com](http://www.morganauctioneers.com) for full list. The Dalles, OR. 541-993-6799

**Steffen Style Hay Grapple:** Steffen (10) bale accumulator (pull behind), and 4655 Hesston, in-line baler. Boring, OR. Gary 971-221-5350.

**1520 Hay Equipment**

New Holland H9880: 2,100+ hours, good condition, may take trade and finance. Caldwell, ID. 208-880-2889, Jim Wilhite.



New Holland Super 1049: refurbished, new paint, like new, may take trade and finance. Caldwell, ID. 208-880-2889, Jim Wilhite.

**NEW HOLLAND SWATHER HW325:** 2000 hours, sickle, \$35,000. Alturas, CA. 530-640-4701

**Large Supply of Rebuilt New Holland Bale Wagons:** Also buying New Holland bale wagons. Sod Buster Sales, Polson, MT. 406-883-2118

**Big Bale Setup:** John Deere tractors, Hesston balers, New Holland swather, Allen rake, HM load, trucks. Consider trades. Prineville, OR. 541-410-4367



**VERMEER ROUND BALER:**  
1980's Model #504H, great shape, makes solid twine, 4x5 bale. \$4,000 OBO. Chehalis, WA. Preston 360-880-6700

**WANTED 2 String Baler:** Beaver, OR. 503-398-5426

**1530 Potato/Sugar Beet Equip.**  
6410 John Deere 4x4 Tractor: with self-leveling 640 loader, (3) remotes, creeper transmission, used in hazelnuts, \$25,000 (without loader \$16,000). Creswell, OR. 541-912-0994

**BEEF DIGGERS:** Amity (3) 6-row and (1) 12-row beet diggers. 6-Rows, \$18,500 each 12-row, \$80,000. Also (2) toppers available. Mountain Home, ID. 208-870-3312

**1540 Orchard, Vineyard Equip.**  
(2) Rears Vineyard Sprayers: 400 gallon tanks, air blast, \$14,500. Sheridan, OR. 971-241-0344

**886 International:** dual PTO, dual remotes, 3-point, runs strong, \$9,250. Skamokawa, WA. 360-795-3375

**8970 NEW HOLLAND TRACTOR** With mega flow hydraulics, Power Beyond Kit to run a 16K Pro eye Bale Scoop. (4) Remotes. Duals, front and back. Approximately (8,000) hours. It is in great shape. Moxee, WA 509-728-3082

**Allison Chalmers 7080 Tractor:** recent engine overhaul, new tires, \$14,500. Sheridan, OR. 971-241-0344

Attention Wanted Kubota or John Deere: 4x4 compact tractor with loader/ equipment. Carlton, OR. 503-550-0094

