

1250 Cattle-Beef
Red Angus Bulls: Private treaty, \$2,800 to \$5,500. Boardman, OR. 541-481-2866

Registered Angus Bulls: Out of top bred leading AI sires, check them out online @ American Angus Assoc. AAA18405920, Delivery available. Tenino, WA. Call Sean 360-239-6380

Registered Black Angus Bulls: Semen tested, BVD/PI negative. Docile and easy to work. Delivery available. JSL Angus, Madras, OR. 503-849-0803

Registered Black Angus Yearling Bulls: Nice selection. Excellent quality, size. Bred for calving ease, gentle and reasonably priced. Washougal, WA. 360-904-3334

☆☆☆☆☆☆☆☆☆☆
 Registered Miniature Hereford Bull: Friendly and gentle, \$1,600. Christmas Valley, OR. 541-749-0522
 ☆☆☆☆☆☆☆☆☆☆
 Registered Murray Gray Bull For Sale: 4 years old, silver color, \$2,500. Hillsboro, OR. 503-648-6153
 ☆☆☆☆☆☆☆☆☆☆

REGISTERED MURRAY GREYS:
 Bulls and heifers currently for sale; pictures available upon request. Located in Fernley, NV. 775-980-7195

Registered Polled Hereford Yearling Bulls: EPD's available, \$1,900. Tenino, WA. 360-264-4050

Registered Yearling Black Angus Bulls: sons and grandsons of Traveler 6807, EXT, Dash, 4C6 Ambush, Jipsey Earl and Connealy Thunder. Fowler's Angus, Cle-Elum, WA. 509-674-1962, 509-304-4540 or 206-660-0883

Shorthorn Bulls:
 March-April Yearlings, Selected for length, width, depth and muscling. Mothers sound, thick, calm, good milk. Good carcass data. Coulee-City, WA. Call 509-632-8709, 509-683-3272

SIGN UP TODAY FOR FREE WEEKLY LIVESTOCK E-NEWSLETTER. VISIT:
 access.capitalpress.com/newsletter.php

Sim Angus Bred Cows: Calving in August. Cow/calf pairs. Colville, WA. 509-684-1523 or 509-675-4774

Sim-Angus Bulls: Sires Bandwagon, Blazer and Lincoln. Dames OCC Angus. Stout, sound, ready to work. 385-335-9982, www.whiteroostercattle.com

Stock Cows
 (17) Large Frame 5 to 8 year old Angus cows: calving now. Will sell (2) or more, delivery available. Milton-Freewater, OR. For more information call Joe Chappell 509-301-4402

Wanted: 6 month old Black Angus steers, Salem, OR. 503-393-8110

WANTED: Pasture for 25-75 pairs. Would consider yearround. Eastern Oregon or Western Idaho. 208-741-0755

Wanted: Young Black or Red Angus pairs. Ontario, OR. 208-741-0755

Washington State University: sells Angus, Wagyu and Angus-Wagyu cross beef cattle of various ages and purposes. Pullman, WA. Call Brent at 509-335-3777 for details and current cattle for sale, or visit: http://www.ansci.wsu.edu/facilities/beef/

Yearling Angus & Charolais Bulls: Hover Dam and Final Answer bloodlines. Mitchell, OR. 541-462-3049

BILL JOHNSON FEEDER CATTLE
 Selling at Everson Livestock Auction
Sat., April 9th 12:30pm
 Hybrid Cross Calves 3 way: Simmental, Angus, Short Horn
 500-550 lbs.
 Pre-Conditioned & Weaned 45 Days
 These calves will have a shipping fever shot sale day.
QUALITY CATTLE FOR 50+ YEARS... THIS IS OUR BEST YEAR YET!
 13-A#24

Looking for CATTLE RANCHES?
 Go to Class. 356
Capital Press
 www.capitalpress.com
 1250-1-53-4#13

1260 Bison
BUFFALO YEARLINGS: 9-12 month old buffalo, (2) bulls, (1) heifer, \$1,600 each, \$4,500 for all. North Bend, OR. 541-297-7731

WANTED Bison: All ages and sizes. Large or small quantities. Contact Tom, Forest Grove, OR. 1-800-574-5141 or tom@efnurseries.com

1280 Livestock Equipment
Hydraulic Calf Tables & Express Portable Corrals: in stock. Northwest Farm Supply, Hermiston, OR. Call Mike 541-561-6047

Livestock Panels: 16' (6) rail, (3) brace, \$106 each. 12' panels, (6) rail, (2) brace, \$83 Bow gates, all lengths and sizes. These panels are new Green color, hundreds available. Heavy 16' Feeder Panels, \$280 each. La Grande, OR. 541-805-9279, 541-963-6258

MONO-MIXER FEED WAGON: 1994 Mono-Mixer 1315 feed wagon, good knives, side delivery, tires okay, 540 PTO, delivery chute recently rebuilt, scales/monitor work, \$6,500/ OBO. Oak Harbor, WA. Jennifer 360-914-7602

Powder River Self-Catch Head Gate: Never used, \$1,000. Springdale, WA. 509-258-8977

1310 Dairy Eq. & Supplies
BEDDING SAWDUST: minimum (18) unit order. For pricing call Forest Grove, OR. Preferred pricing for Tillamook dairies. 503-849-0216

Complete DeLaval Double 8 Parallel Milking System: Variable speed, V-Star vacuum pump, variable speed milk pump, 2000V BouMatic takeoffs complete, 2000 gallon dairy cool milk tank, with 79 plate cooler, CleanoMatic plus hands free wash system. Asking \$20,000 OBO. Vancouver, WA. 360-904-8509

1380 Irrigation Equipment

1310 Dairy Eq. & Supplies
Polydome Calf Nursery: Hutches available for various climates. Western Polydome, Inc. Monroe, WA. 800-822-5837

SIGN UP TODAY FOR FREE WEEKLY DAIRY E-NEWSLETTER:
 access.capitalpress.com/newsletter.php
NEW MANURE SPREADER
400 bu. • BUY OR RENT
 Call Scott at Barr-Tech Compost/Organics Recycling
 Authorized Dealer of PIK RITE Spreaders
509-590-0437
www.Barr-Tech.net
 Sprague, WA

1320 Tanks & Storage
 (10,000) Gallon Trailer Mounted Fuel Tank: with pump meter and hose, \$2,500. Independence, OR. 503-851-9601, 503-838-3165.

500 gallon, double wall, skid mounted, fuel tank: 808-497-4709 or 503-728-2310.

1380 Irrigation Equipment

1320 Tanks & Storage
Diesel Fuel Tanks: 10,000 and 4,000 gallons, molasses tank and miscellaneous tanks, Sublimity, OR. 503-769-6681

NEED FUEL STORAGE?
 Used 5,300 gallon Aluminum Fuel Trailer: With pump and motor, in good condition. Ready to use, \$12,000. Lebanon, OR. Contact us at: tiffany.haley@groupenterprises@gmail.com or at 541-409-0261

1330 Generators
 Chicago Industries 15KWA: Diesel, single phase, low hours, \$2,500. Lyons, OR. 503-859-8051

1340 Shop Equipment & Tools
Tools * Tools * Tools * Tools
 300 & 600 lb sandblaster pots, 3000 psi pressure washer, 4 ton floor jack, 6 hp, Evenrude motor, air powered grease gun & 3/8 drill. Turner, OR. 503-743-4212

1380 Irrigation Equipment

1380 Irrigation Equipment
(2,000) Joints: 3"x40" with 30" risers, solid set irrigation pipe, \$39.50/ joint. Also assorted 6"-12" Mainline. Bonanza, OR. 541-281-2947 mark@caloreseed.com

(4) Nelson 150 Big Guns: (3) still in boxes, (3) carts, \$700/ each with cart or \$600/ each gun. Sprague, WA. 509-981-9443 or 509-434-9492

(9) 5" X 40' lengths, (2) 5" x 20' lengths, 6 bolt flange aluminum pipe. Prosser, WA. 509-788-1005

Wade 40"x4" Hand Line: with sprinklers and risers, \$80 choice. Independence, OR. 503-851-9601, 503-838-3165.

2" Aluminum Wade Rain Pipe: (200) pieces, 40' lengths with risers. Canby, OR. 503-209-9556

5" main line, (16) pieces, 30', (7) with risers. 3" hand line, (11) pieces with sprinklers, Silver Lake, OR. 541-576-2862

6" IRRIGATION PIPE/ PUMP: (24) gated, (13) smooth, (13) aluminum gated, All 30', T's, 90's & shut-offs, many shorter, gated & smooth, and parts. 50% retail OBO. 5 HP Berkeley pump & foot valve, \$2,000 OBO. Meridian, ID. Call Bob 208-631-2481

8" IRRIGATION PIPE: 1,440' Ringlock pipe, (15) pieces with riser, \$7,200. 50' long, 8" aluminum suction line with foot valve/ screen, \$1,000. Hillsboro, OR. 503-680-1692

Berkeley Rebuilt 4" Pro Pump: on trailer, \$1,400. Stout irrigation pipe, 270'-4" mainline, 1,600'-3x20, 180'-3x30, 760'-3x40 sprinkler pipe, all for \$2,500. Pierce 650' of 6" mainline with valves, \$2,500. Creswell, OR. 541-654-2467, Cassee.

DRIP AND SPRINKLER VALVES: (20) 1" and (10) 1.5" Irritrol valves with adjustable pressure regulators, (30) Dig remote solenoids controllers, \$60 each. Silverton, OR. Call 503-586-6641

GREAT USED PUMPS: Fresh rebuilt Cornell 4HH-75-4, 75 HP, centrifugal, \$4,500. Paco, 50 HP, centrifugal, \$2,400. 4 year old Emerson, 50 HP, hollow-shaft Turbin (motor only), \$4,000. All units in great operating condition. Pasco, WA. 509-318-3577

Handline: 1600', 4", 3" and 2", \$1/ foot, 1,000 feet of mainline with risers, 6", \$1.50/ foot, OBO. Eureka, NV. 775-318-0673

Irrigation Pipe Rentals: Solid set pipe as low as \$300/ acre per season. Nampa, ID. Nick 208-573-3393

Reinke 8 Tower Center Pivot: GPS equipped with an upgraded panel and sprinklers. Purchased new; used for 3 seasons. \$55,000. Moses Lake, WA. (Easy access) 509-312-9735 sergeybragar@gmail.com

IT'S A SMALL WORLD FOLKS!
 A student in Vancouver, BC bought my Leyland 272 tractor to ship to his dad in South Africa! His dad already had one and wanted another, so he purchased the one I listed in Capital Press.
 Tony Windermere
 Nut Grove
 Chilliwack, BC

Capital Press Classified Advertising
 1-800-882-6789
 Fax (503) 370-4383
 www.capitalpress.com

1380 Irrigation Equipment
MAIN LINE AND HAND LINES: 4", 5", 6", 8" main line, 30' and 60' lengths. 3" hand lines, 45' length. Miscellaneous wheel line parts. Burns, OR. Call for pricing, 541-589-1266

Pivots: Good, various lengths, all brands & late models. No rust. Plus some pivot parts, pumps and buried wire. Keizer, OR. 503-881-3232, 503-390-3210

Wade Rain Wheel Line: (33) joints, 5' wheels with hydraulic mover. \$3,500. Basin-City, WA. 509-531-8524 freemantams@smwireless.net

Wanted Used Wheel Lines: Harrisburg, Brownsville Area, OR. 541-915-2840, 541-954-8145

WHEEL LINES & MAINLINE FOR SALE: (1) Western \$5,000; (1) Wade Rain, \$4,500, (1) Wade Rain 26 joints, \$4,000. All self levelers. 40 joints, 8 inch mainline with risers \$2.50 per foot. Harrah, WA. Call 509-949-9243

IRRIGATION EQUIPMENT BOUGHT. SOLD. RENTAL.
 New & Used Parts.
 • Aluminum Pipe
 • Certa-lok
 • Siphon Tubes • HDPE
 • Sand Media Filters
 • Wheel Lines • Pumps
PACIFIC SOUTHWEST IRRIGATION
Stockton Dixon • Turlock
 Office: (209) 460-0450
 Fax: (209) 982-1832
 www.pacsouthwestirrig.com
 Carlos (209) 481-7677
 Jim (209) 986-0099
 14-2#18

1390 Packing, Processing Eq.
FRUIT & VEGETABLE WASH LINE:
 Includes bin dumper, brush rollers, Kerian sizer, NW auto dual bagger/boxer, re-conditioned, \$25,000. Aurora, OR. 503-209-5821. Pictures: www.dwellsfarm.com

FRUIT/VEGETABLE WASH LINE:
 Includes wash tank, brush rollers, waxer and dryer. \$18,000. Aurora, OR. 503-209-5821. Pictures: www.DwellsFarm.com

1410 Logging Equipment
 2000 Kenworth Truck W-900, C15, 6NZ, 18 speed, 2007 Whitlog trailer. Nice truck, must see to appreciate. Fruitland, ID. 208-741-5508

American #1 Handset Portable Sawmill: All steel, on 4-wheel axle, carriage 14', (2) 8' track extensions for 47', some extra components, 52", 56", (2) 60" inserted tooth saws, 761 jimmy diesel powered with Rockford clutch, \$7,000, OBO. Brookings, OR. 541-254-4131, leave message.

JOHN DEERE SKIDDER: 1989 540D skidder, clean, dry, no leaks, \$25,500. 503-550-5170

Logging Equipment: "All where is, as is." all or best offer. John Day, OR. 541-575-1525

1440 Sawmill Equipment
 (24) Unit Chip Bin: \$12,500. (20) Unit Chip Bin: \$11,000. Lyons, OR. 503-859-8051

1450 Forklifts
 1987 Taylor TE 300S: full cab+ heater, 6-cylinder Cummins, 3-speed automatic, 41,800lb. Weight, 218" 2-stage upright, 8' forks, side shift, good rubber & brakes (air), \$25,000. Gaston, OR. 503-789-3726

1450 Forklifts
Clark 8,000lb. with Side Shift: Detroit diesel engine, \$5,800. Ocean Shores, WA. 360-289-3963 or 360-580-8788



Hyster H-155-FT 2009: Fresh engine and mast, fork positioner and (5) valves. \$27,250. McMinnville, OR. 503-550-7625

THIS AD SPACE could be yours!
 1-800-882-6789
 or FAX 503-370-4383
 www.capitalpress.com

Used Lift Trucks
 Also New & Used Parts
 All sizes, makes & prices
LIFT TRUCK SERVICE
888-890-1450
 forkliftsales.com
 Ellensburg, WA

1470 Heavy & Indust. Equip.
 (2) New Custom Built Rock Pickers: with discharge elevators, built for river rock, built by D & L Chain Inc. Aumsville, OR. 503-769-7992



1995 KoBeLco SK120LC: 3,723 hours, rebuilt engine, long block & turbo. Fast, tight machine. Pre-computer, (2) buckets, \$26,500. Gaston, OR. 503-789-3726



2000 WELDCO-BEALS MULCHER: 36" disc, fits 140 size excavator or larger, cuts grass, brush, small trees. Rebuilt and ready to go \$9,000. Rickreall, OR. Call 503-507-7230

2006 Bobcat Brushcatt 72: high flow mower, \$4,800. Demco 4-wheel wagons, \$1,000 each. Bareroot side digger for wheel tractor, \$3,500. All in excellent shape. Gresham, OR. 503-209-8657, Tim.



2011 LOFTNESS AXH73 MULCHER: Nearly new, heavy duty, fits large Skid Steer, 80 - 100 HP, GPM Range 22 @ 3300 psi to (40) @ 3500 psi, 150 hours, 6' Swath, quick attach to your Skid-steer! \$14,000. Rickreall, OR. Call 503-507-7230

Champion Super Pack 540: vibratory roller, 54" drum, pad foot shells, new tires, 1600 hours. Excellent condition, \$18,000. Miller Bobcat welder/ 8500 watt generator trailer mount, 50' leads, \$2,700. Oakland, OR. 541-459-3996

Complete Water Treatment Plant: reverse osmosis, 515,000 gallons per week. Alan Bradley switch gear, all tanks and high pressure pumps, stainless steel air stripper. Was new in 2003, costs \$2.5 million. For sale, all offers considered, complete package \$55,000. Creswell, OR. 541-912-7807 nathan06@icloud.com

ATI
ATI Machinery, Inc.
 1-888-461-0625
 Five Points, CA
 Serving CA & AZ Farmers since 1975

1480 Farm Equipment Parts

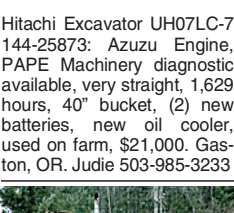
1470 Heavy & Indust. Equip.
Carco Winch: off of an 1150 B Case Crawler. Good condition. Cottonwood, ID. 208-983-5954

Clark 8,000lb. with Side Shift: Detroit diesel engine, \$5,800. Ocean Shores, WA. 360-289-3963 or 360-580-8788

Cumberland Model 584 Rigid Plastic Grinder: 16x20" feed opening, 20 HP electric motor, blower and cyclone. Price negotiable. Moxee, WA. 509-930-2335

D3 CAT: with winch, good condition, \$15,000 OBO. Ellensburg, WA. 509-607-3907

D8H-46A U-Blade 2-Barrel Ripper: Low engine hours, good undercarriage, strong machine. High Horse #12994, \$40,000. Enterprise, OR. 541-263-0132



Hitachi Excavator UH07LC-7 144-25873: Azuzu Engine, PAPE Machinery diagnostic available, very straight, 1,629 hours, 40" bucket, (2) new batteries, new oil cooler, used on farm, \$21,000. Gaston, OR. Judie 503-985-3233

International TD20E: with tilt angle blade & winch. Tractor has approximately 4000 original hours, 300 hours on new rails & rollers. Excellent condition, \$22,000. Graham, WA. 253-377-2362, dtken316@yahoo.com

JLG RT Scissor Lift: Dual fuel, 33' lift, \$5,500. Grove 2632E Scissor Lift: \$2,000. Skid Steer Attachments: Broom, \$600, hammer, \$2,000, brush rake with clamp, \$600. Lyons, OR. 503-859-8051

Like new John Deere 650J crawler: 1290 hours, 6-way blade, rippers and sweeps \$11,900. Eugene, OR. 541-688-1441

Mercedes Benz Truck Bundle: (2) dump trucks, spare chassis, two spare engines, \$17,500/ all. Bend, OR. 541-280-5574

MISC Heavy Equipment: D6H: EROPS cab, U dozer with tilt ripper, new engine and new hydro pump, \$86,500. D-5N: 2000+/hours, 6 way blade, ripper, \$106,500. Scraper 613-B with cab, \$35,500. Scraper 613-B Rops, \$33,500. Kenworth water truck, 3800 gallon, commercial built, new engine and many new repairs, \$41,500. Salem, OR. 503-362-3055

New 8' Brush Rakes: with mounting brackets, \$1,050 each. Clackamas Tractor, Clackamas, OR. 503-655-1125

Wanted: Belly Dump, older crossgate, pup trailer preferred. Banks, OR 503-324-4006

CASE INDUSTRIAL PARTS
 We sell genuine, after market, and used CASE parts at discount prices nationwide. Call For Free Catalog.
CENTRAL EQUIPMENT AFTER MARKET & USED PARTS
 Medford, OR
(888) 593-8749
 108-465-2#18

DON PEILA TRACTOR REPAIR • PARTS
 specializing in JOHN DEERE INDUSTRIAL EQUIPMENT
 Good Used, Reconditioned & After-Market Parts
 Peilatractorrepair-parts.com
1-877-423-9746
(541) 772-1801
 Central Point, OR
 14-7#5

NOW RENTING!
D8T-SU 3-shank rear mount ripper.
atimachinery.com
 14-7#18

TRUCK SCALES • LIVESTOCK SCALES • WAREHOUSE SCALES • RENTAL SCALES
Your Truck and Livestock Scale Specialists
NEW SCALES USED SCALES
MOBILE & STATIONARY
 We are happy to announce we have acquired Sanstrom Scales in Twin Falls, ID. We look forward to serving their long-standing customers.
Steve Orr 503-510-3540 Oregon Scio Bend 1-800-451-0187
Washington Spokane Benton City 509-535-4295
Idaho Twin Falls Nampa 1-800-451-0187
www.scalesnw.com • SteveOrr@scalesnw.com
SCALE SERVICE • SYSTEMS • PARTS • SALES & CONSTRUCTION
 14-2#7

1390 Packing, Processing Eq.
1390 Packing, Processing Eq.
MARKET SUPPLY & DISTRIBUTION, INC.
 www.marketsupplydist.com
World Class Berry & Produce Packaging Solutions
 Degradable Bags, Flats, Wax Boxes, Clamshells, etc
 Farm • Agriculture • Packers • Food Processors, etc.
 #1 Source Delivering & Serving the NW Since 1988.
 Kent, WA • 253-479-0111
 14-4#24
1410 Logging Equipment
1410 Logging Equipment
2007 PEGSON METROTRAK JAW CRUSHER
Very Good Condition!
 Hauls easy at only 65,000 lbs.
 For Sale or Rent. Sale Price \$195,000
WINTER RENTAL RATES:
 \$6,000/Week • \$18,000/Month
EQUIPMENT SOLUTIONS CORPORATION
 Call Joe 509-637-3564
 14-1#6

NEW, USED, AND REMAN PARTS
TOLL FREE: 1-877-928-1646
 32427 OLD HWY 34, TANGENT, OR 97389
New & Reman J.D. Powertech Engines
4.5L / 99HP \$9,500
6.8L / 175HP \$16,000
JD 4010, 4020 Clutch Kits \$715
SALVAGED TRACTORS
 Seats w/Air Suspension \$1025
Farmland Tractor Supply
 Parts @ Farmlandtractor.com
 14-4#5