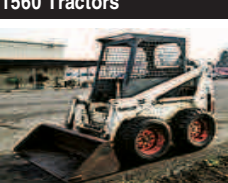


1560 Tractors



Bobcat 722 Skidsteer: Gas engine, ROPS. Ready to work, \$6,000. Tangent, OR. 541-928-1646

CAT D2 Serial #5416319: New starter, new batteries, direct start. For sale or trade. Portland, OR. 360-244-0175

Caterpillar D6C SA Farm Tractor: very good condition, \$7,500. Harrah, WA. 509-728-4495



Ford 2310: Diesel, new tires, recent rebuild, 8-speed, \$6,000 OBO. Mt. Vernon, WA. 360-661-3231

Ford 4610: 50 HP, (2) sets of hydraulics, 4900 hours. Good condition, \$7,000. Portland, OR. 503-819-5794

Ford 5000: Cab, new rear tires, very dependable and fuel efficient, \$5,500. Riley, OR. 541-620-0666

INTERNATIONAL 1466 & 1486: 1971 International 1466, runs, no major issues, \$11,000. 1978 International 1486, all in working condition, \$15,000. Aurora, OR. 503-991-7104, Dylan.

For pictures: www.dwellfarm.com

John Deere 1023E: Low hours, 22.4 hp, Yanmar diesel, hydrostatic transmission, R4 industrial tires, \$10,000. Sherwood, OR. 503-590-1945

John Deere 2640: with 146 loader, new hydraulic controls, engine has been overhauled, very well maintained. Asking \$13,900. Wilder, ID. 208-482-4362, evenings

John Deere 4020: power shift, (2) remotes, less than 200 hours on rebuilt motor, good, \$9,000. Powell Butte, OR. 541-280-4517

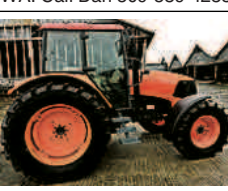
John Deere 4650: 2WD, 16-speed, powershift, (3) remotes, 8,800 hours, new transmission, new cab kit, solid, ready to work, \$25,000. Powell Butte, OR. 541-280-4517



John Deere 5510N: Narrow, 4WD, cab, 11,616 hours, 80% tires, 16.9R24 rear, 10.5/80, 18 front, \$18,000. Tangent, OR. 541-928-1646



John Deere 8245R Tractor: 2400 hours, very good condition, \$127,500. Eltopia, WA. Call Dan 509-539-4233



KUBOTA M135X & M125X: Well maintained, excellent shape lower hours, M135 has a new factory engine with 2 hours on it. Also have (2) MX5100 Kubota's, \$15k each. M135 has 2900 hours, \$38k, M125 has 5100 hours, \$29k, Buhler 2180 \$75k. Silverton, OR. Call/text for pictures. Mike 503-949-4551



2008 Maschio G-400 13' Tiller: Only (500) acres, 300 hours. Asking \$25,000. Fort-Rock, OR. 541-408-6267

2011 Rhino 20' Mower SR240: Dual blades, foam filled tires, \$11,500. Grass-Valley, OR. Call/text for pictures and information 541-980-3612

1560 Tractors

Branson Tractors

Model 4020R

SERIES
3120R 4020R
3520R 4525R
3510H 4720H
6640 8050

24 - 80 hp., 4 wheel drive Compact Synchro-Shuttle Hydro 24, 28, 35, 47 hp

INTRODUCING THE NEW BRANSON BOSS 800 UTV's

Two-or-Four door models have 60hp and speeds up to 58mph.

- Front Winch
- Hard Doors & Roof
- Electric Dump Bed
- 14" Wheels with 27" Tires
- Top Mount LED Light Bar

THE TRACTOR STORE
(541) 342-5464
5450 W. 11th, Eugene, OR
www.capitalpress.biz/hosted/tractorstore

1560 Tractors

John Deere 8560: with PTO, \$39,500. Hillsboro, OR. 503-939-9241

John Deere 8870: 350 hp, with PTO, \$45,500. Hillsboro, OR. 503-939-9241

John Deere 9100: 6,000 hours, excellent shape, good tires, \$62,000. **John Deere 6400:** runs and drives great, good tires, \$25,000 OBO. Sheridan, OR. 503-434-7692

NEW MICHELIN 380/75R20 -14.5-R20, APPROXIMATELY 42"x15" HEAVY DEEP LUG CHEVERON LONGWEAR RADIAL TUBELESS TIRES. STORE PRICE NEARLY \$1,100, FOR SALE NEW, \$650. Possible quantity discount. Southern Oregon. 541-646-1465

Tractor Manuals: Large selection, Ag and Industrial, Logging, Jim Robinette, Ontario, OR. 206-713-3441 tractormnl@aol.com

WANTED KUBOTA BACKHOE: medium size, 26 HP up, no junk, under \$17,000. Tacoma, WA. 253-230-2729

WANTED Reduction Gear Unit: for an 8N Ford Tractor. Prefer a Howard or Sherman. Norton, KS. 785-874-4053

White 105-4: 4WD cab, 120 HP, \$8,500. **1978 Massey Ferguson 2675:** 100 HP, cab, **Woods Dual Loader:** \$2,500. Everson, WA. 360-988-2497

MERIDIAN EQUIPMENT #1 resource for hard-to-find equip. & parts to restore old tractors, OR let our trusted experts do the restoration!
360-398-2141
MeridianEquip.com
Bellingham, WA

1600 Farm Equipment

(2) 3-point Hydraulic Quick Hitches: for trailers. \$325 each. **Like New Frontier GM 3060,** 5' finish mower, \$2,250. **Ellis 4-row transplanter,** for strawberries and other crops, \$1,850 OBO. Hubbard, OR. 503-970-6039



10' BOX SCRAPER: Hydraulic lift, mechanical link for tilting blade to grade roads and driveways. Professionally built, brand new, never used. Possible delivery. \$3,800. Boardman, OR. 541-417-1435

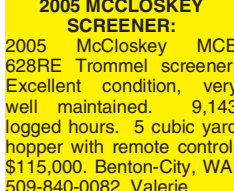


12' AERWAY AERATOR: Concrete weights. Good condition, \$9,900. Bonanza, OR. 541-591-5195

13' Case 3-Point Chisel Plow: \$3,750. 5' 3-point. Chisel plow \$1,350. 7' John Deere heavy duty 3-point. Field cultivator, \$1,650. Byron 103 corn picker, \$6,000. 8'x16' steel deck with removable sides farm wagon, \$2,350. 4x7' ATV trailers, \$1,350. Silverton, OR. 503-586-6641

1480 IH Combine: SN# 1720225U015019, 20' 810 large auger header with cart, very good condition, always used in Dryland Wheat, 4664 hours, \$8,750 OBO. Ritzville, WA. 509-660-0552

2005 MCCLOSKEY SCREENER: 2005 McCloskey MCB 628RE Trommel screener. Excellent condition, very well maintained. 9,143 logged hours. 5 cubic yard hopper with remote control. \$115,000. Benton-City, WA. 509-840-0082, Valerie.



2011 Rhino 20' Mower SR240: Dual blades, foam filled tires, \$11,500. Grass-Valley, OR. Call/text for pictures and information 541-980-3612

2011 Rhino 20' Mower SR240: Dual blades, foam filled tires, \$11,500. Grass-Valley, OR. Call/text for pictures and information 541-980-3612

1560 Tractors

1600 Farm Equipment

45' Van: \$1,000. 45' Van, \$2,000. 53' Hi-Cube Van, \$4,000. Hillsboro, OR. 503-939-9241

50' Stoos Transport Hitch & 5 Calkins Center Drive Rods: \$10,500. Grass-Valley, OR. Call/text for pictures and information 541-980-3612

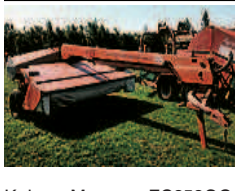
15' 3pt Rears Flail: \$8,500. Sheridan, OR. 971-241-0344



John Deere Flail Beater: 12', refurbished. Madras, OR. 541-325-6316, 541-325-6317.

6' Cultivator: 3-point with 6' mounted harrow. Silverton, OR. 503-873-5287

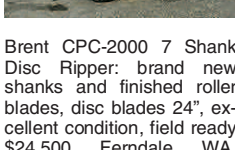
KENNO HD RAISED BED EQUIPMENT: Superbedder bed shaper for berries/vegetables. High speed plastic mulch/weed mat layer, water wheel, single and double row transplanter with 10-wheels, mulch lifter, \$16,000. Used on only (50) acres. Silverton, OR. 503-586-6641



International 145 4-Bottom On-Land Plow: \$4,500. John Deere 915 7-shank ripper, \$3,500. International 430 14x18 baler, \$1,500. All in excellent condition. Middleton, ID. 208-989-3872

John Deere 216 Header: 6' bat reel with pickup fingers. Excellent shape, \$6,000. Gresham, OR. Tim 503-209-8657

John Deere 260 Loader Mounts: fits 20, 30 and 40 series tractor, \$300 OBO. Monroe, WA. 425-308-1014



Brent CPC-2000 7 Shank Disc Ripper: brand new shanks and finished roller blades, disc blades 24", excellent condition, field ready \$24,500. Ferndale, WA. 360-220-0035

CASE 1200 Early Riser Corn Planter: 12 row, 30" spacing, mounted folding stacker bar, equipped with Yetter fertilizer coulters, with ground driven John Blue pump, \$28,000. Quincy, WA. 509-989-5950

Case 3-Bottom Mold Board Plow: Excellent condition, \$800. Warren, OR. 503-952-6433

Case 770 Disk: 17', fair condition, 2 cylinder lift, (4) good tires, rear hitch with hydraulic remote, 23" blades, \$7,000. Ellensburg, WA. 509-856-4907

Case International Model 3900: 32' disc with harrow, \$12,500. Case International 25' pull type draper swather, \$2,500. Hillsboro, OR. 503-939-9241, 503-647-5641

Complete Water Treatment Plant: reverse osmosis, 515,000 gallons per week. Alan Bradley switch gear, all tanks and high pressure pumps, stainless steel air stripper. Was new in 2003, costs 2.5 million to install. For sale, all offers considered. Thinking individual pieces 10% of new. Creswell, OR. 541-912-7807 nathan066@icloud.com

D&H Separator: All stainless, good condition, with stands and roller \$10,000. Amboy, WA. 360-606-6348

DISK FOR SALE: Shafer 14" disk cross cut, new blades, lots of parts, \$9,500. Klamath Falls, OR. D: 541-882-4799 E: 541-891-7632

John Deere 4455: 5400 hours, 13' NW rototiller. Woodburn, OR. 503-860-6076

John Deere 452: 12' 6" spacing, grain/ fertilizer drill, \$6,500. (2) 750 Massey Ferguson Combines: stored inside, \$3,000/both. 3 ton Power Bin: \$500. Chehalis, WA. 360-262-3606

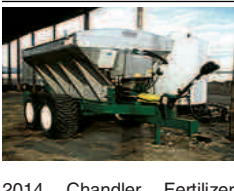
John Deere 7722 Hillside Combine: 5,300 hours, rebuilt 224 header, mapper, yield monitor, almost new front tires, extra parts, \$19,500. Moro, OR. Call 541-565-3228

John Deere 975 Switch Plow: 4-bottom with spring reset and tension bold bottoms, excellent shape, less than 600 acres on plow, \$6,500. Gresham, OR. 503-209-8657

MILKING PARLOR EQUIPMENT AND STALLS: (2) heavy-duty 10 HP Unity motors+ vacuum pumps. (1) holding tank. (12) VSO milk unit retractors. (12) BouMat-ic machines. (12) dialed grain feeders. (1) milk pump+ receiver. (1) (1,500) gallon Mueller milk tank. (1) 3 HP milk tank washer. (1) Partlow recorder. (1) 5 HP Source Cooling System milk compressor. (1) 4'x4' vent fan. (40) lock-up stanchions, 400lbs.; calf size. (31) free stalls; Holstein size. (25) lock-up stanchions; Holstein size. (44) free stalls; baby calves. (32) 5" irrigation pipes with sprinklers. Total price: \$15,000 for all equipment together. Sand Lake, OR. Specific quantity of equipment and price, contact information is below. Dennis Waldron, home: 503-965-6568, cell: 503-801-0513 or Mick Waldron, cell: 971-301-1262.

1600 Farm Equipment

DEMCO 500 Sprayer: excellent condition, \$2,500 OBO. Harrah, WA. 509-728-4495



2014 Chandler Fertilizer spreader: (dry fertilizer and lime), 10 ton capacity, Raven controls, wired for GPS, stainless steel box. \$47,000. Culver, OR. 541-480-8739

FOR SALE: (2) Newhouse tandem axle mint planters. (1) single-row Holland transplanter. (6) stall mint still with 350 HP York Shipley boiler. Columbia Falls, MT. 406-249-1913

Goodyear Tundra Tires: (2) 66x44x25 tires and wheels, nice, \$6,000. Salem, OR. 503-510-2396



Hazelnut Harvester Cart: potato chain elevator, \$8,500. Gaston, OR. 503-709-4516

Hopper Bottom Grain Trailers: Steel, doubles. Hillsboro, OR. 503-939-9241

International 145 4-Bottom On-Land Plow: \$4,500. John Deere 915 7-shank ripper, \$3,500. International 430 14x18 baler, \$1,500. All in excellent condition. Middleton, ID. 208-989-3872

John Deere 216 Header: 6' bat reel with pickup fingers. Excellent shape, \$6,000. Gresham, OR. Tim 503-209-8657

John Deere 260 Loader Mounts: fits 20, 30 and 40 series tractor, \$300 OBO. Monroe, WA. 425-308-1014



Litter Spreader: 8 1/2 yards, dual spinners and hydraulic gate, \$9,500. Dallas, OR. 503-931-3724 or 503-480-9460



Apache Self-Propelled Sprayer: (1,000) gallon tank, 100 booms, auto-steer, accurate, auto-boom, 5 year warranty. Rupert, ID. 208-434-4400, 208-431-2738 ask for Blake.



Monosem Stacking Tool Bar: 12 row, 30" spacing with hydraulic cylinders 28"3" overall length, \$5,000. Moses Lake, WA. Call 509-398-1457

John Deere 2600 4 Bottom Plow: with cutters, \$4,000 OBO. Forest Grove, OR. 503-887-6597

John Deere 3975 Chopper: new knife and blades, \$17,500. **John Deere Corn Head:** 2-row narrow, \$3,500. 5.5' Grass Head, one owner, very low hours, \$3,000. Amboy, WA. 360-606-6348



John Deere 4455: 5400 hours, 13' NW rototiller. Woodburn, OR. 503-860-6076

John Deere 452: 12' 6" spacing, grain/ fertilizer drill, \$6,500. (2) 750 Massey Ferguson Combines: stored inside, \$3,000/both. 3 ton Power Bin: \$500. Chehalis, WA. 360-262-3606

John Deere 7722 Hillside Combine: 5,300 hours, rebuilt 224 header, mapper, yield monitor, almost new front tires, extra parts, \$19,500. Moro, OR. Call 541-565-3228

John Deere 975 Switch Plow: 4-bottom with spring reset and tension bold bottoms, excellent shape, less than 600 acres on plow, \$6,500. Gresham, OR. 503-209-8657

MILKING PARLOR EQUIPMENT AND STALLS: (2) heavy-duty 10 HP Unity motors+ vacuum pumps. (1) holding tank. (12) VSO milk unit retractors. (12) BouMat-ic machines. (12) dialed grain feeders. (1) milk pump+ receiver. (1) (1,500) gallon Mueller milk tank. (1) 3 HP milk tank washer. (1) Partlow recorder. (1) 5 HP Source Cooling System milk compressor. (1) 4'x4' vent fan. (40) lock-up stanchions, 400lbs.; calf size. (31) free stalls; Holstein size. (25) lock-up stanchions; Holstein size. (44) free stalls; baby calves. (32) 5" irrigation pipes with sprinklers. Total price: \$15,000 for all equipment together. Sand Lake, OR. Specific quantity of equipment and price, contact information is below. Dennis Waldron, home: 503-965-6568, cell: 503-801-0513 or Mick Waldron, cell: 971-301-1262.

1600 Farm Equipment

John Deere 9760 SDS Combine: good condition, \$97,500. Hillsboro, OR. 503-939-9241

JOHN DEERE BALER & MONO-MIXER FEED WAGON: John Deere 435 round baler, variable height/ density, 1,000 RPM PTO, net wrap, bale push bar, forage gather wheels, (2) control boxes, new belts, buddy lubber system, new tires, low bale count, \$14,000/OBO. 1994 Mono-Mixer 1315 feed wagon, good knives, side delivery, tires okay, 540 PTO, delivery chute recently rebuilt, scales/ monitor work, \$6,500/OBO. Oak-Harbor, WA. Jennifer 360-914-7602

Kuhn Plow: 4 bottom, 18", hydraulic reset rollover. 152 series, like new, plowed only (1,500) acres. \$22,500. Mesa, WA. 509-989-0979

New General Sprayer: (110) gallon, 21' spread, 3-point hitch, \$1,250. New-Plymouth, ID. 801-440-6999

Newhouse Mint Planter: tandem axle, good condition, \$7,500. Potato/ Mint digger, good condition, \$7,500. Randle, WA. Call Tim 360-901-6574 kandi.berg@yahoo.com

Newhouse Mint Root Planter: 20', tandem axle, 6-row, adjustable depth and spacing, great condition, \$8,000 OBO. Central Oregon. 541-546-2547

SHIPPING CONTAINERS FOR SALE

Modifications Available

- Doors
- Windows
- Vents

DRYBOX WA • OR • ID
503-241-4000
360-262-0500
www.dryboxusa.com 1600-6-4-1/#24

Containers For Sale
• 20' and 40'
REFRIGERATED CONTAINERS AVAILABLE

Portland Container
9449 N. BURGARD WY., PORTLAND OR 97203
In Portland, call Mike at (503) 546-2914
Outside Portland: 1-800-788-5159
pcrcanman@msn.com

MERIDIAN EQUIPMENT
Serving the Pacific Northwest Since 1973

Case IH JX95
w/New Loader, 4WD, Cab, PTO, 3 Point. \$32,500

Used Wooden Poles
7' Long, 3" or 4" Wide, Sold in Bundles of About 100. \$2 per pole (sold only by the bundle)

Kubota L4850
w/Loader, 4WD, PTO, 3 Point. \$13,500

Ford 7610
w/ Westendorf Loader, PTO, 3 Point, 2WD. \$9,995

West Coast's m.e. Miller tire distributor
www.meridianeq.com
360-398-2141 • Bellingham, WA

13th Annual Orchard, Nuts & Vines Special Section

Capital Press Agriculture Weekly will publish a Special Section featuring orchard, nut and vine articles and advertising on **April 15, 2016**

By advertising in this Special Section, you'll be reaching over 89,000 print and online readers in California, Idaho, Oregon and Washington who make the buying decisions for your product or service!

Space deadline is March 18th

Contact your Capital Press sales representative or call 800-882-6789. www.capitalpress.com 1600-9-4-4/#13

EQUIPMENT FOR SALE

Silverton, OR

LOKA FARMS

2009 18" Rears Pak Flail. 4 blade assemblies per foot, recent bolts and rotor bearing. shined, excellent condition. \$19,000. Call Alex 503-991-7138

2006 CHALLENGER MT425E, 1,015 hrs, 2WD, 60 PTO hp, 2 remotes, LH reverser, 16 spd, partial power shift, \$17,500. Call Rob 503-991-7140

'97 International 4900 S/A, DT466E, Allison MT643, 222k miles. \$9,250. Call Bruce 503-991-7135

'08 NEW HOLLAND CX8070 COMBINE. Universal Spike Cylinder, IntelliView II color monitor, Self leveling cleaning shoe, 800 front tires, 480/70R30 rear tires; Automatic folding grain tank covers, Slow fan kit; Straw chopper and chaff blower, with Model 76c Pickup header, 2243 engine/ 1850 separator hours. Call Doug 503-991-7136

JD 4995

Farmhand F235 Tractor Mount Loader: PTO pump driven, \$2,000. Rupert, ID. 208-670-4617

Like New 2014 John Deere R450 Windrower: 271 hours, with John Deere 995 AIR grass seed header, Pape updates. Harrisburg, OR. Call Dick Langdon 541-520-3417

self propelled mower \$64,000

AGCO 3312

tandem axle, good condition, \$7,500. Potato/ Mint digger, good condition, \$7,500. Randle, WA. Call Tim 360-901-6574 kandi.berg@yahoo.com

mower conditioner, center pivot \$12,000

JD 920 mower conditioner.....\$7,000
JD 926 mower conditioner.....\$8,000
JD 945 mower conditioner.....\$10,000

www.TJEquipmentLLC.com
TJ EQUIPMENT LLC
360-815-1597 • Lynden, WA

INVENTORY SALE - CALL!

NEW Case IH Axial Flow 8240H, Hillco Level Combine...CALL

40' MacDon FD 75 Draper Header.....CALL

NEW Case IH Steiger 500 wheel tractor, triples, PTO.....CALL

Case IH Steiger 550 Quad Trac, 36" tracks, PTO.....\$397,500

JD 9400 Wheel Tractor, duals, 425HP.....\$69,500 OBO

40' Great Plains 3S, 4000 HD, drill.....CALL

30' Great Plains 2N, 3010 NT, No-till drill.....CALL

Great Plains 48' Field Cultivator, Floating Hitch, 10" H F Sweeps w/HR 4 Bar Spike Harrow.....RENT or LEASE

Great Plains 29 Ft. Disc.....RENT OR LEASE

Great Plains 51' 16 Bar Flex Harrow.....CALL

40' GP Sweep Plains Plow, Model 9450 w/fert. pkg.....CALL

Kiotti PX9020 Tractor, mech. shuttle, cab, w/lldr, 4x4.....CALL

Schulte 5026 Rotary Mowers, 26' w/fan kit.....CALL

New 120' Top Air Model 1600 Pull Sprayer, 1600 gal tank, GPS. Duals, ultra sonic booms.....CALL

New Unverferth 8250 & 9250 Grain Cart, 850/950 BU.....CALL