

1250 Cattle-Beef

Registered Black Angus Yearling Bulls: Nice selection. Excellent quality, size. Bred for calving ease, gentle and reasonably priced. Washougal, WA. 360-904-3334

Registered Bred Females: all ages. Noah's Angus Ranch, Angus cattle since 1955. Cambridge, ID. 208-257-3686

www.noahsangursranch.com

Registered Limousin Bulls: Blacks and Reds, AI sired, halter broke, between 12-24 months. Sandy, OR. 503-539-4304



REGISTERED LONGHORN BULLS:

(2) longhorn bulls for sale, 3 years old, registered with the International Texas Longhorn Association. RMCC Cantankerous calved 11/7/12; RMCC Big Blade calved 3/15/12. Very gentle, easy to handle, \$2,500/ pair, or \$1,500/ each. Joseph, OR. 541-426-4819

Polled 2 Year Old Hereford Bull: conformation, lineage all good. \$2,500. Corvallis, OR. 541-929-4435.

Registered Murray Gray Bull For Sale: 4 years old, silver color, \$2,500. Hillsboro, OR. 503-648-6153

REGISTERED POLLED HEREFORD BULL:

Low birth weight, correct, deep sided, heavy muscle, A.I. sire trait leader for REA. Lynden, WA. 360-354-5485, 360-410-9706

1250 Cattle-Beef

REGISTERED POLLED HEREFORDS FOR SALE: Yearlings from Spring 2014 & calves from Spring 2015. Lebanon, OR. Visit: https://www.facebook.com/ValleyAcresRanch/

Open replacement heifers raised right, fed right, handled right & priced right. Ready to breed your way! O'Doherty, selection days, March 17th-19th 2016. Boardman, OR. 541-481-2866

REGISTERED RED ANGUS HEIFERS:

Spring Bull Session Saturday, March 12th, 2016, Lunch at 11AM, sale starts at 1PM. (38) yearling Angus bulls. (30) yearling Angus heifers. (1) halter broke Angus show heifer prospect. Junction City, OR. For more information or to request a catalog, contact Pam: 541-913-2128 or Donald: 971-219-6729 or visit website: www.rocknd-ranch.net

ROCK'N D RANCH:

Shorthorn Bulls: March-April Yearlings. Selected for length, width, depth and muscling. Mothers sound, thick, calm, good milk. Good carcass data. Coulee-City, WA. Call 509-632-8709, 509-683-3272

SHORTHORN BULLS:

March-April Yearlings. Selected for length, width, depth and muscling. Mothers sound, thick, calm, good milk. Good carcass data. Coulee-City, WA. Call 509-632-8709, 509-683-3272

REGISTERED POLLED HEREFORD BULL:

Low birth weight, correct, deep sided, heavy muscle, A.I. sire trait leader for REA. Lynden, WA. 360-354-5485, 360-410-9706

1250 Cattle-Beef

Registered Red Angus Bulls: Stout, balanced, docile, quality bloodlines (Hamley), pictures available. Ferndale, WA. 360-224-1143

WANTED (24) Head Black Angus Steers/ Heifers: no Crossbred or B/W Faced, around 400 lbs. Montesano, WA. 971-404-9330

1250 Cattle-Beef

SIGN UP TODAY FOR FREE WEEKLY LIVESTOCK E-NEWSLETTER. VISIT: access.capitalpress.com/newsletter.php

1260 Bison

WANTED Bison: All ages and sizes. Large or small quantities. Contact Tom, Forest Grove, OR. 1-800-574-5141 or tom@efnurser.com

1280 Livestock Equipment

Oak Lea Mixers
LIVESTOCK FEED MIXERS



• Kirby Mfg. Vertical & Horizontal Mixers
• NDE Vertical Mixers
325 to 1700 c.f. single & twin verticals

Largest inventory of new & used mixers in the Northwest!

TIM BIELENBERG 503-769-2090
Cell 503-932-2059 • Aumsville, OR

1280 Livestock Equipment

Livestock Panels: 16' (6) rail, (3) brace, \$106 each. **12' panels,** (6) rail, (2) brace, \$83 Bow Gates, all lengths and sizes. These panels are new Green color, hundreds available. **Heavy 16' Feeder Panels,** \$280 each. La Grande, OR. 541-805-9279, 541-963-6258



Fitzgerald Corrals • Yamhill 503-662-4832
WW Western • Prineville 541-447-6890

1310 Dairy Eq. & Supplies

BEDDING SAWDUST: minimum (18) unit order. For pricing call Forest Grove, OR. Preferred pricing for Tillamook dairies. 503-849-0216

Polydome Calf Nursery: Hutches available for various climates. Western Polydome, Inc. Monroe, WA. 800-822-5837

SIGN UP TODAY FOR FREE WEEKLY DAIRY E-NEWSLETTER: access.capitalpress.com/newsletter.php



400 bu. • BUY OR RENT Call Scott at Barr-Tech Compost/Organics Recycling
Authorized Dealer of PK RITE Spreaders
509-590-0437
www.Barr-Tech.net
Sprague, WA

1320 Tanks & Storage



VERTICAL STORAGE TANKS: New custom built vertical storage tanks, UL 142 fuel, water, and fertilizer, up to 25,000 gallons. Middleton, ID. Please call Andy at 208-860-9256. RCF, LLC.

Check our WEBSITE for ads that were "too late for press."
www.capitalpress.com
Call 1-800-882-6789 to place an ad or subscribe.

1340 Shop Equipment & Tools

Heavy Duty Truck & Tractor Tools: Curtis D-96A 2- stage shop or portable compressor, 1/2", 3/4" and 1" air wrenches, 1" drive sockets, adapters and extensions. 500' and 600' lb. torque wrenches, Cat and Cummins engine turners, valve adjusting tools and feeler gauges, Jake brake tools and more. Philomath, OR. Call Lynn at 541-929-3492 for prices and information.

1380 Irrigation Equipment

(2) 1/8" Mile Wheel Lines: with motors and sprinklers. Good condition, 4" pipe with 5" wheels. \$3,000 each. Hermiston, OR. 541-561-4789

(70) Used Pivots: all brands. Garden Valley, ID. Contact Mike at 208-420-1480, www.pivotsplus.com

1200' of PVC Pipe: low pressure, 80lbs., \$5/ foot. Moses Lake, WA. 509-765-9028

30 HP Berkley Pump: with panel. 150 HP Cornell 5HH pump with soft start panel. 200 HP Cornell 6HH pump with soft start panel. 6-stage 10" turbine pump, 2,700 GPM at 27'. 3-stage 10" turbine pump, 2,000 GPM at 200'. 250 HP soft start panel, 10" discharge head, 100 HP hollow shaft motor with panel, 260' of oil tube and shaft. Malin, OR. 541-891-6698



ECHO HOSE REEL: 1,400', 4" hose. John Deere diesel booster, computer controlled, new last year, used one month. Being replaced with solid set. \$55,000 OBO. McMinnville, OR. 503-472-7897

GREAT USED PUMPS: Cornell centrifugals: 4RB-40-4, 40 HP, \$2,400. 4RB-50, 50 HP, \$2,600. 4RB-CC, 50 HP, \$2,800. 4HH-75-4, 75 HP, fresh rebuild, \$4,500. Turbin, 50 HP, Emerson Turbin motor, \$4,000. ABB VFD 60 HP, max drive, \$4,000. All pumps in excellent operating condition! Delivery may be available. Pasco, WA. 509-318-3577.

1380 Irrigation Equipment

Aluminum Supply Line: (9) pieces, 5"x30", \$275. Bend, OR. 541-389-8963

Irrigation Turbine Pumps: 75 hp, 1,400 GPM, 175 TDH, \$8,000. (2) @ 60 hp, 1,200 GPM, 170 TDH, \$6,000 each. Good running condition. Pasco, WA. Call Eric 509-366-6434

Mainline Irrigation Pipe: (39) sections, Wade 30"x6". (26) sections, Wade 40"x6". (50) sections, Wade 40"x5". (45) sections 40"x6" Pierce. Make offer. Carlton, OR. 503-537-4555, joeduyv@yahoo.com

1/2 Mile Wheel Line: 2,860' of 5" pipe, 7" wheels and (2) movers. **602' Wheel Line,** (1) mover, 5" wheels, 4" pipe, \$10,000 for all. Central Point, OR. 541-840-4570

NEW Wog 200 Brass Gate Valve: 4", \$120 OBO. Nampa, ID. 208-391-1512

Pivots: Good, various lengths, all brands & late models. No rust. Plus some pivot parts, pumps and buried wire. Keizer, OR. 503-881-3232, 503-390-3210

WADE-RAIN WHEEL LINE: (24) of 4"x40" pipes, 7" wheels, self leveling sprinklers, late model Honda motor, (2) stabilizers. In great condition, \$3,500. Located in Royal City, WA. Please call 509-346-9344

1450 Forklifts

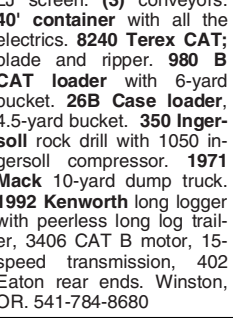
Clark 8,000lb. with Side Shift. Detroit diesel engine, \$7,600. Ocean Shores, WA. 360-289-3963 or 360-580-8788

1470 Heavy & Indust. Equip.

10'x20' Truck Scale: with readout. Come see it work. Asking \$5,000. Bend, OR. 541-410-2214

1962 CAT Road Grader 14C: serial #35F1094. Electric start, hydraulic sliding snow board, power steering, front ripper, front push, wheel weights, \$8,000. Royal City, WA. 509-346-2425, 509-989-0240

Crusher Equipment For Sale: 20x36 Universal portable jaw crusher; 6x16 LJ screen. (3) conveyors. **40' container** with all the electrics. **8240 Terex CAT;** blade and ripper. **980 B CAT loader** with 6-yard bucket. **26B Case loader,** 4.5-yard bucket. **350 Ingersoll** rock drill with 1050 Ingersoll compressor. **1971 Mack** 10-yard dump truck. **1992 Kenworth** long logger with peerless long log trailer, 3406 CAT B motor, 15-speed transmission, 402 Eaton rear ends. Winston, OR. 541-784-8680



CAT 977K: Newer under-carriage, D6d winch / fairlead, OROPS, sweeps, runs, operates excellent, \$13,000. Chelan, WA. 509-470-1867



1989 INTERNATIONAL S2200: Cummins BIG CAM 300 turbo, air brakes, Warren 6/8 dump box, low miles, good rubber, 9 speed, transmission, \$9,500. Rickreall, OR. Call 503-507-7230



2000 WELDCO-BEALS MULCHER: 36" disc, fits 140 size excavator or larger, cuts grass, brush, small trees. Rebuilt and ready to go! \$12,000. Rickreall, OR. Call 503-507-7230

2005 CAT 315CL: 360° clam, digging bucket, wedged disconnect, cab and body guard, original owner, used on own property, 964 hours, \$135,000. Western Washington 360-271-0867



2011 LOFTNESS AXH73 MULCHER: Nearly new, heavy duty, fits large Skid Steer, 80 - 100 HP, GPM Range 22 @ 3300 psi to (40) @ 3500 psi, 150 hours, 6' Swath, quick attach to your Skid-steer! \$16,800. Rickreall, OR. Call 503-507-7230

BOLD IS BETTER

Make sure the reader sees the most important information in your classified line ad quickly and easily.

For just \$2 more per ad per week you can **BOLD** specific copy in your ad.

Just ask the sales rep. when you call in your classified line ad about **BOLD**-ing your ad.

DEADLINES:
Classified Display Ads, Weds. @ 10AM
Classified Line Ads Weds. @ Noon

1-800-882-6789
Fax 503-370-4383
www.capitalpress.com

Capital Press
The West's Ag Weekly

ERNST IRRIGATION

Jill has FLIPPED!

Nozzles for FREE?

Gaskets for FREE?
(up to \$2.75 each max.)

SPRINKLERS \$3.75 off?

PIPE REPAIR \$10 off Each Stick

...and there are many more!

Call Jill or the parts staff for further details. We'll even help fill out the paperwork!

Ask our staff about Production Efficiency Programs. We can handle it!

DON'T WAIT!
This program may not last long!

Trade Ally of Energy Trust of Oregon

* All items subject to Energy Trust conditions and approval. Energy Trust incentives subject to Energy Trust qualifications. All items limited to inventory on hand.

www.ErnstIrrigation.com

20179 Main St., St. Paul, OR 97137 • (503) 633-1111

WESTERN
WATER DEVELOPMENT CORP.

541-548-8555

Deep Irrigation Well Specialist

Air Rotary/Mud Rotary
Well Deepening/Repair

FREE QUOTES & WRITTEN ESTIMATES

E-mail:wwdrill4u@aol.com

www.westernwater4u.com

LICENSED BONDED INSURED.
OWWC#1385

1380-8-2-1/#5

1470 Heavy & Indus. Equip. 1470 Heavy & Indus. Equip.

1470 Heavy & Indust. Equip.

All Terrain CAT Forklift: 5000 lbs cap, gas powered, low 3 stage mast, will clear an 8' door. Serial #26A00495, \$9,000. Forest Grove, OR. Don 503-703-2557

Used Lift Trucks

Also New & Used Parts
All sizes, makes & prices

LIFT TRUCK SERVICE
888-890-1450
forkliftsales.com
Ellensburg, WA

IT'S SO EASY TO PLACE CAPITAL PRESS CLASSIFIED ADS... PHONE TOLL FREE
1-800-882-6789

1470 Heavy & Indust. Equip.

ATI

ATI Machinery, Inc.
1-888-461-0625
Five Points, CA
Serving CA & AZ Farmers since 1975

NOW RENTING!

D8T-SU 3-shank rear mount ripper.

atimachinery.com

We'll Find Your PARTS!!
New & Used Parts, Accessories & Attachments for all your needs:
Allis-Chalmers, Austin-Western, Case, Caterpillar, Clark, International, Hough, Dresser, Galion, John Deere and more.

* MEMBER, NATIONWIDE PARTS LOCATOR SYSTEM *

Norcan Parts & Equipment
9423 N. Market St. • Spokane, WA 99207 • 509-466-3566
1-800-586-3566

WOOD V BAR X RANCH RED ANGUS
Annual Bull Sale

Friday, March 18, 2016 1p.m. PST At the Ranch, Sandpoint, ID

Producing Registered Seed Stock
Meeting Industry Demands
and Remaining Commercially Focused

Come join us for lunch and enjoy our hospitality!

Catalog available online
Contact us to get on our mailing list
Leonard or Ben Wood
481649 Hwy 95
Sandpoint, Idaho 83864
Office: 208.293.5246
Cell: 208.290.7768 • 208.255.6025
haywoodcattle@gmail.com
Woodvbarxranh.com

BID ONLINE AT DVAUCTION.COM

western VIDEO market

UPCOMING SALE
FRIDAY, MARCH 4TH
Cottonwood, CA

Consignment Deadline: February 24th
Bidding Line: (530) 347-7830

www.wvmcattle.com

For more details: Call our office at (530) 347-3793 or wvm@wvmcattle.com
Look for the catalog and video on our web site:
www.wvmcattle.com
Market your cattle with the professionals!

TRUCK SCALES • LIVESTOCK SCALES • WAREHOUSE SCALES • RENTAL SCALES

Your Truck and Livestock Scale Specialists

NEW SCALES
Built • Delivered • Installed
Leased • Rental Scales:

USED SCALES
Bought • Sold • Traded
Repaired • Rental Scales

We are happy to announce we have acquired
Sanstrom Scales in Twin Falls, ID.
We look forward to serving their long-standing customers.

Steve Orr 503-510-3540 Oregon
Scio Bend
1-800-451-0187

Washington
Spokane Benton City
509-535-4295

Idaho
Twin Falls Nampa
1-800-451-0187

www.scalesnw.com • SteveOrr@scalesnw.com
SCALE SERVICE • SYSTEMS • PARTS • SALES & CONSTRUCTION