

CLASSIFIEDS

VIEW ALL CLASSIFIED ADS ABSOLUTELY FREE AT WWW.CAPITALPRESS.COM

LINE ADS
503-364-4431
FAX 503-370-4383

DISPLAY ADS
503-364-4798
FAX 503-364-2692

Capital Press

The West's **Ag** Weekly

1-800-882-6789
www.capitalpress.com

1400 Broadway St. NE
Salem, OR 97301

P.O. Box 2048
Salem, OR
97308

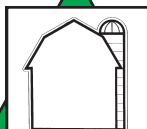
OMISSION & ERROR: Capital Press will exercise due care to prevent omissions and mistakes, but its total liability for any error, in any advertisement published, shall not exceed the proportionate space in which the error occurred. Credit, when allowable, will apply to the first insertion only.



80 - Trucks



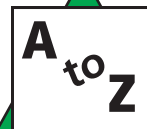
210 - Auctions



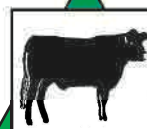
380 - Farms



590 - Help Wanted



740 - Miscellaneous



1250 - Cattle



1600 - Farm Equip.

THE CAPITAL PRESS SALES TEAM IS HERE TO SERVE YOU!

• Real knowledge • Real People • Real results!



Brittany Vanderhoff
N Willamette Valley
(503) 871-7957



Dylan Melcher-Branch
NW Oregon
SW Washington
(503) 871-7956



Carl Bamford
SW Willamette Valley,
SW & Central Oregon
(541) 521-9008



Matt McWilliams
E Oregon &
SE Washington
(509) 520-8773



Denise Treadwell
NW & N Central
Washington
(253) 677-9917



Bill Blanck
E Washington,
Montana & N Idaho
(509) 999-3130



Matt Petrie
SE Idaho
N Utah
(208) 880-0455



JoAnn Vanderwey
SW Idaho &
NE Nevada
(208) 880-4334



Greg Hains
California
& W Nevada
1-800-882-6789

20 ATV's, Motorcycles 20 ATV's, Motorcycles 20 ATV's, Motorcycles 20 ATV's, Motorcycles 20 ATV's, Motorcycles 20 ATV's, Motorcycles 20 ATV's, Motorcycles 40 Automobiles

- ✓ Tons of Accessories
- ✓ Easy Financing
- ✓ Full Service Dealership
- ✓ Complete Line of Honda ATV's

2016 PIONEER 1000 EPS

MSRP \$15,199

- ◆ 6-Spd. Auto DCT Trans.
- ◆ 4-mod Diff. Lock
- ◆ Elec. Pwr. Steering
- ◆ Manual Paddle Shift
- ◆ Fuel Injection
- ◆ 12 Month Warranty

TAYLOR honda sports

Your Authorized Full Service Dealer

2140 N. Pacific Hwy. 99E • Woodburn, OR • Open 8-6 Tues-Sat.
(503) 981-1813 • 800-981-1813 • www.taylormotorcycles.com

Honda.com Pioneer 1000 EPS ONLY FOR DRIVERS 16 YEARS AND OLDER. MULTI-PURPOSE UTILITY VEHICLES CAN BE HAZARDOUS TO OPERATE. FOR YOUR SAFETY, BE RESPONSIBLE. ALWAYS WEAR A HELMET, EYE PROTECTION AND APPROPRIATE CLOTHING. ALWAYS WEAR YOUR SEAT BELT, AND KEEP THE SIDE NETS AND DOORS CLOSED. AVOID EXCESSIVE SPEEDS AND BE CAREFUL ON DIFFICULT TERRAIN. ALL MUVIS DRIVERS SHOULD WATCH THE SAFETY VIDEO "MULTI-PURPOSE UTILITY VEHICLES: A GUIDE TO SAFE OPERATION" AND READ THE OWNER'S MANUAL BEFORE OPERATING THE VEHICLE. NEVER DRIVE UNDER THE INFLUENCE OF DRUGS OR ALCOHOL. ON PUBLIC ROADS OR WITH MORE THAN ONE PASSENGER, DRIVER AND PASSENGER MUST BE TALL ENOUGH FOR SEAT BELT TO FIT PROPERLY AND TO BRACE THEMSELVES WITH BOTH FEET FIRMLY ON THE FLOOR. PASSENGER MUST BE ABLE TO GRASP THE HAND HOLD WITH THE SEAT BELT ON AND BOTH FEET ON THE FLOOR. RESPECT THE ENVIRONMENT WHEN DRIVING. PIONEER IS A REGISTERED TRADEMARK OF HONDA MOTOR CO., LTD. 12/16. *MSRP does not include \$750 in destination charges. Visit powersports.honda.com to view applicable destination charge amount.

2016 ALL-NEW YXZ1000R

0 INTEREST FOR 6 MONTHS

(Thereafter, the standard APR. (Either 12.99% - 22.99% as variable 13.24% - 23.24%)

PURE SPORT. PURE GENIUS.

POWER

333 SW Sublimity Blvd
Sublimity, OR 97385
503-769-8888

poweryamaha.com

1952 Vintage Willy's Jeep: Extra hood, tailgate and doors available, \$5,800 OBO. Prairie-City, OR. 541-620-2391

1970 BMW Model 2002: motor rebuilt, body needs work, \$3,000. New-Plymouth, ID. 801-440-6999

BE BOLD

Give your classified line ads extra punch when you **BOLD** pertinent copy like the header, outstanding items and the phone number. For just \$2 more per week per ad, **BOLD**-ing specific copy insures the reader notices the most important part of your ad.

DEADLINES:
Classified Display Ads, Weds. @ 10AM
Classified Line Ads Weds. @ Noon
1-800-882-6789
Fax 503-370-4383
www.capitalpress.com
Capital Press California's Ag Weekly

You've Got Our Number!

Call toll free to place a Capital Press line classified ad.
1-800-882-6789
or Fax (503)370-4383

Or go online 24/7 365 at www.capitalpress.com

Newsday Crossword

SATURDAY STUMPER by Brad Wilber
Edited by Stanley Newman
www.stanxwords.com

ACROSS

- Sea of Tranquility toucher
- Stay loyal
- Best-selling book of 1960
- Bullock's husband in *Crash*
- Not working
- Deep-seated
- Entrepreneur's embarrassment
- Bernstein operetta
- Languish
- It's prevalent in Azerbaijan
- Island buyer's acquisition
- Consequential
- Rounds often for good
- Yoga branch
- South Seas romance
- Tag line
- Approach
- Will, once
- Medicated
- Sample cautiously
- Pirate deterrent
- Best Song Oscar winner for 2002
- Pieces of work
- Starts over
- Movable property, in law
- Coach
- Launching period
- Imagine
- "Focus. Hustle. Hydrate. Believe." sloganer

DOWN

- It's slow to mature
- One redefining the cutting edge
- New Orleans street between Clio and Thalia
- Together
- Mbube, Cape Jazz, etc.
- Univ. seniors' hurdles
- Wide-open spaces
- Skittish reaction
- Do
- Plodding
- Hoopster's stat
- Gauges
- Construed
- Name on a 1962 Edgar Award
- Manchester merchant
- Resistance unit
- What has a neck and a foot, but no hands?
- Pests
- Piquant cupful
- Film role for Fonda, Garner and Costner
- Eponymous French botanist
- Brief disclaimer
- Flip for
- Anagram of "patrimony"
- Letterhead abbr.
- Major European coffee port
- Tabular file
- Penurious
- "I came to Casablanca for the ...": Bogart
- Predator of the kiwi
- Art inspired by the samurai
- "The best meditation," per the Dalai Lama
- Loot
- Inspiration for Wagner's Ring Cycle
- High-fashion shoemaker
- Star of Spielberg's first feature film
- Like SASEs

(See answers in Class 1040)

Call and list your ad in the West's BEST Classifieds!

Capital Press
The West's Ag Weekly

DEADLINES:
Classified LINE Ads Wednesday @ Noon
Classified DISPLAY Ads Wednesday @ 10 am

Angie Moores Sarah Dunsforth

1-800-882-6789
FAX (503) 370-4383 • www.capitalpress.com

For all your roofing and siding needs

1-800-470-4660

NORTH AMERICAN METALS, INC.
Since 1987

Buy Mill Direct

METAL ROOFING AND SIDING
AGRICULTURAL • COMMERCIAL
INDUSTRIAL • RESIDENTIAL

WINTER SPECIAL!
3' wide metal roofing & siding
\$1.49/LF Galvalume/Galvanized
\$1.65/LF for select colors
28, 26 & 24 GA available

CALL US TODAY!

Boom Truck Delivery

Concealed Fastener Products
12" TIGHT LOCK STARTER STRIP • PATENT #09291821
16" TIGHT LOCK STANDING SEAM METAL ROOFING PANEL
12" TIGHT LOCK STANDING SEAM METAL ROOFING PANEL

Exposed Fastener Products
2' CORRUGATED PANEL 2 1/2"
2' DELTA RIB PANEL
2' WEST COAST PANEL
3' WEST COAST PANEL
3' TUFF RIB PANEL
3' DELTA RIB PANEL

www.NorthAmericanMetal.com

Sales: 1-800-470-4660 • 503-844-8688 • Fax 503-693-1547