

80 Trucks

2000 Isuzu FRR: 14' refrigerated van box, 22,000 GVW, 187,000 miles, 6-speed manual transmission with air brakes, \$19,500.  
1990 Peterbilt dry van box, 26,000 GVW, 24' with lift gate, 190,000 miles, 6-speed manual transmission with air brakes, \$6,000. Aurora, OR. 503-314-7124 frankbattilega@gmail.com

**A picture says a 1,000 words**



Add a full color photo to your print and online ad today by calling

**800-882-6789**  
capitalpress.com  
Capital Press  
The West's Ag Weekly

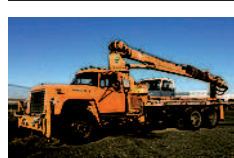
Medium Duty, Heavy Duty Trucks & Trailers... We Carry All Makes! OPEN 7 DAYS A WEEK



**2005 IHC 4300 High Cube Box**  
Non-CDL, DT466, 24'x102"Wx103" Inside Height.....\$19,500

**D&J Equipment Sales**  
253-826-2277  
dandjequipment@yahoo.com  
www.djtrucksales.com

80 Trucks



1978 IH F1850: DT 466: 10-speed, 20' flatbed, (6) outriggers, with national 6T56 boom, with auger and jib. Only \$8,750. Pasco, WA. 509-531-0138

**REDUCED PRICE**

**2006 MACK DAY CAB:** 4-axle, 427 Mack with brake, 18-speed auto shift, 46 rears, 411 ratio on air, 240 wheelbase, 11.24x5 low profile \$32,500. Sandy, OR. 503-849-4608

2007 Dodge 3500: 6.7 diesel, 4x4, automatic, brake retarder, duals, air equalizer, pop-up 5" wheel hitch, red in color, 241,000 miles, looks and runs good, \$15,750 firm. Wilder, ID. 208-941-5134, no Saturday calls.



1984 Ford 800 Dump Truck: 350,000 miles, motor 3208-CAT, 10,000 miles, tires 80%, \$12,500. Puyallup, WA. 253-770-0242



1991 Volvo FE42: with sleeper, 250 HP Volvo, less than 10,000 miles on in-frame, 8-speed transmission, SQHD rears, 27' aluminum bed & headboard \$11,500 OBO. Astoria, OR. 503-325-2688

80 Trucks



1996 Peterbilt Model 379: 430 Detroit, 15-speed, 265" wheelbase, 63" walk-in sleeper, all aluminum wheels, 1.2 miles, \$24,750. Nicest Pete I've ever owned; shows pride of ownership! Pasco, WA. 509-531-0138

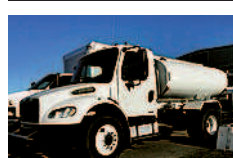
80 Trucks



1995 Freightliner FLD120: 60 Series Detroit, approx 500k miles on rebuilt, 10 new XZE2 Michelin tires, 13 speed, \$18,000. Woodburn, OR. 503-710-1231

**Used Buses**  
www.westernbus.com  
503-905-0002 • 1-800-258-2473  
WESTERN BUS SALES, INC.  
30355 SE Hwy 212 • Boring, OR

80 Trucks



2007 Freightliner: business class M2 water truck. 6-speed transmission. Hose reel, non CDL, CAT rental return. Only 19,000 miles. (5) sprayers, (2,000) gallons. Ready to go to work. \$39,500. Pasco, WA. 509-531-0138

80 Trucks



1998 Freightliner FLD120: Series 60 Detroit, tandem axle, 10 speed, 164" wheel base, runs good, \$5,000. Kent, WA. 253-872-3590

80 Trucks

**Classifieds 1-800-882-6789**

**TRUCKS, CUSTOM BEDS & TRAILERS**

**1989 REBEL STEP DECK \$8,500**  
40' Step Deck Trailer. 8' Upper Deck. Air Ride Suspension. 22.5 tires.

**www.EconomyTruckSales.com**  
economytrucksales@charter.net Ph 509-525-3322  
Walla Walla, WA Cell 509-200-1020

**LOVELL Truck Sales** SINCE 1967



**1999 GMC T6500 Reefer**  
CAT 210HP, auto, 18' ThermoKing reefer, electric standby.....\$9,500



**2004 International 4400**  
Single axle, DT-530 300/P Fuller 10 spd, 21,000 lb, 12,000 lb axles, 216" WB, 20' flatbed, 144 C/T, PS, AC, cruise control, seating for 3.....\$22,500



**2005 Freightliner**  
Columbia, 3 axle day cab, Series 60 14L, engine brake, 10 speed, 3:90 ratio, dual air locks.....\$27,500



**(8) 2006-2007 Freightliners**  
CL-120645T, day cab, Series 60 14L 10 spd., engine brake, air ride cab, PS, A/C, cruise control. Just off full maintenance lease. Ready to go. Priced from \$26,500



**2005 IH 7600**  
Tandem Cummins ISM 370, engine brake, walking beam suspension, 254" wheelbase, 4.11 ratio, 20,000 lb. front axle.....\$39,500



**2007 Int'l 4300**  
DT-466 210 HD, 6 spd, ThermoKing, 20' box \$22,500



**(2) 2008 Int'l 4300**  
18' box, 6 speed, PS, A/C, cruise control.....\$20,500



**(4) 2006 Kenworth W-900**  
CAT C-15, 18 speed, 46,000 lb. rear axle, engine brake, 11R 24.5, PS, A/C, cruise control, good dyno from CAT .....Starting from \$36,500



**2000 Freightliner FL-106**  
Single axle, Series 50 Detroit, 9 spd. PS, AC, cruise control, Locker.....\$9,500

**1-800-451-0012**  
680 SW 1st (Hwy 99 East) Canby, OR  
(503) 266-5886  
FAX (503) 266-6903  
LOVELLTRUCKSALES.COM

**OTC Oregon Truck Center**  
6505 NE Columbia Blvd  
Portland, Oregon  
(503) 288-1118  
www.oregontruckcenterinc.com



**1996 Volvo WG64T 3 Axle Day Cab Tractor**, Cummins N14Plus/350hp, 10 spd, 40K-RA, 13K-FA, 171" WB, Jake brake. Stock #5605.....\$14,500/\$12,500



**1988 International Box Truck**, Cummins L10, 7 spd, 22K-RA, 10K-FA, 228" WB, e-track, TUCK-AWAY lift gate. Stk#5606.....\$8,250 \$7,500



**1995 Utility Dry Van**, 28'x102" FRP Dry Van Aluminum roof, aluminum floor, swing doors, front landing leg, 36" king pin setting, rear air, electric hookups.....\$4,250 ea.



**2004 GMC WT5500**, Air brakes, PS, tilt wheel, A/C, AM/FM/CD, 42 gal tank, aluminum walk ramp, carrier reefer unit w/ 2,468 Mi Stk#5641.....\$12,500



**1995 International 4900 20' Dump Flatbed**, International DT466/210 HP, 6 Spd., 21K RA, 12K FA, 254" WB, 292,460 miles. Stk# 5524.....\$12,500



**2006 International 8600**, ISM Cummins, 425 hp, Diesel, 10spd, engine brake, air ride suspension, 165 in. wheel base. Stk#5654...CALL



**395K MILES**



**FRESH PAINT**



**2008 Sterling Acterra** Dry, Cummins ISC, 10spd, A/C, PS, AM/FM/CD, HEATED mirrors, Difflock, cruise, dual 80 gal. tanks. Stk#5549...CALL

**WW TRAILERS INC.**

5000 NE Columbia Blvd., Portland, OR 97218  
(503) 821-6000  
www.wwtrailers.us

1997 Ford F-800 2-Person Manlift/Utility. 60' w.h. Terex Hi-Ranger. Low Miles. Cummins & 5+.....\$21,500

**Hiring Truck Salesman & Mechanic's Helper**  
Call John Chambers 503-887-0070.  
**ChambersMotorCo.com**  
(503) 663-7200 • Boring, OR

1999 Transcraft 48'x102" Combo Spread Axle Drop-Deck. S-3546.....Please Call

1999 Eager Beaver 50-ton, 3-axle removable neck hydraulic lowboy. L-3334.....Please Call

2010 Doonan 53' Drop-Deck. Loaded, sliding rear axle, ramp kit, etc.....Please Call

**REACH YOUR AG CUSTOMERS with**

- Flyers
- Mobile
- Websites
- Newspaper
- E-newsletters
- Custom Publications
- Ag Business Directory

**We deliver your message to the West's Ag Audience!**

**Capital Press**  
The West's Ag Weekly  
**800-882-6789**  
or go to **www.capitalpress.com**



**2001 Ford E-450 Shuttle Bus**. 12 Passengers & 3 Wheel Chairs. 6.8L V-10 & A/T.....\$9,500



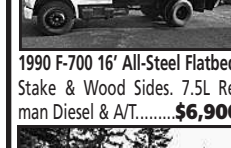
**1985 Hahn Fire Truck**. 6V92 & A/T.....\$10,900



**2005 Freightliner M-2 Utility Service Truck**. 15' Aluminum Body, C-7 Cat & 6-spd. \$17,900



**1991 International 4900**. 5-Yard Dump. DT-466 & 5-spd A/T.....\$8,500



**1990 F-700 16' All-Steel Flatbed**. Stake & Wood Sides, 7.5L Reman Diesel & A/T.....\$6,900



**2000 Ford F-450 Utility**. 10 KW Generator & Walk-In. V-10 & A/T.....\$8,500

**Sales • Parts • Service • Body Shop • Finance • Lease & Rental**

**Brattain INTERNATIONAL TRUCKS**

Portland (800) 275-9200  
Salem (800) 452-5302  
Albany (800) 228-4346  
Bend (800) 275-3331  
Eugene (800) 275-1444

Come see us at booth E189 & E190 **www.brattain.com**

**GANNON EQUIPMENT LIQUIDATING!**  
Trucks, Trailers, Parts & Equipment  
**541-928-5244**  
Tangent, OR 4-21/15



**(206) 571-8782 OPEN SATURDAYS!**



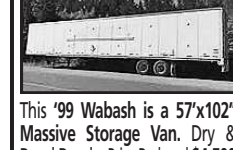
'07 Frltnr Argosy 515hp 14 Ltr. Detroit, 10-Spd., 300,072 Miles on ECM. 392,369 on Odom. This Truck has a 242" WB, All Alum. Wheels, Alum. Headache Rack w/2-Alum. Toolboxes.....\$39,500



'06 Frltnr M-2, 24'x96" Body, 5-Spd. Allison AT, Spring Ride, 202,443 Miles, A/B, 33,000 lbs. GVW. Nice Trk., Box Needs Some TLC.....\$19,500



'06 Frltnr FLD 120, 4-Ax Daycab, Red Top N-14 Cummins 435 hp, Jake, AC, 10-Spd., Airride, 236" WB, Alum. Wheels.....\$12,500



This '99 Wabash is a 57'x102" Massive Storage Van. Dry & Road Ready. Price Reduced \$4,500 We Have Many Other 53' Vans in Stock Starting at \$4,000 **www.pro-truck.com**

**CLASS 8 TRUCKS**  
**509-534-9088 • SPOKANE, WA**  
Answering machine after hours

**NICE SELECTION OF FLATBEDS, REEFERS, INSULATED STORAGE**

**1999 IH 9100**  
Cummins N14 Select, 400 hp, 454K Miles, 10 spd. OD, Engine Brake, Air Ride, 3:90 Ratio, 175" WB.  
**\$19,900**

**WE RENT TRAILERS...**  
Flatbeds, A-Trains, Reefers, Grain Hoppers, Dry Vans and Storage Trailers.  
Day, Week & Monthly Rates Available O.A.C.

**2001 IH 9200**  
Low Miles, C12 CAT, 430 hp, autoshift, OD, Jake, Air Ride, 4:11 ratio, 11R22.5, alum/steel wheels, 173" WB.  
**\$29,900**

**2006 FREIGHTLINER COLUMBIA**  
Detroit 60 Series, 490 hp, 10-spd, jake, air ride, 242" WB, empty wt. 16,200 lbs.  
**\$19,900**

**NEW & USED GRAIN TRAILERS**  
Call for pricing & availability.  
**GRAIN TRAILERS FOR RENT**  
Available in 24', 38', 40' & 42'  
**Pay this year for your trailer rental! Apply it to a purchase!**

**ARMY TRUCKS**  
**4x4 & 6x6**  
**COMPLETE PARTS INVENTORY**  
**MEMPHIS EQUIPMENT**  
**901-774-0600 (TN)**  
**www.memphisequipment.com**  
**THE NATION'S LARGEST ARMY TRUCK DEALER**

**#1 VOLUME CHEVROLET DEALER IN OREGON!**  
2 YEARS IN A ROW!

**SUPPLIER PRICING**

**ON ALL CREW CAB SILVERADO'S**

2855 Maple Ave. NE, Salem, OR  
**Your Way On The Parkway!**  
**capitol-chevy.com**

**POWER**  
YOUR REGIONAL COMMERCIAL DEALER FOR NEW AND USED

**We have New and Pre-Owned Commercial Vehicles**  
Cargo Vans, Service Bodies, Cube Vans, Flatbeds, Dump Beds, Specialized vehicles for custom applications and if we don't have it, we will find it for you!  
Contact us today to see what we have waiting for you!

**CALL JIM, PHIL OR BRANDON**  
**(855) 537-2324**

**POWER FLEET - COMMERCIAL**  
Email: fleet@powerautogroup.com • www.powerautogroup.com

**We Are The Best Darn Diesel Shop In Oregon!**  
**COME IN AND SEE WHY!**  
And We Absolutely, Positively Have The Best Remanufactured Engines Available Anywhere!  
Huge Inventory • Expert Technical Assistance

**100,000 mile warranty when we install, depending on application.**

**SPECIALS! (Incidentals Extra)**  
GM 6.6 Duramax, installed.....\$9,750  
Ford 6.0 Powerstroke Engine, installed.....\$10,500  
Ford 6.4 Power Stroke, installed.....\$7,600  
Ford '94-'03 7.3 Powerstroke Engine, installed.....\$7,500  
Dodge Cummins '89-'02 5.9 Engine, installed.....\$7,500  
Dodge Cummins '03 & up, 5.9 C/R Engine, installed.....\$9,450  
Dodge Cummins 6.7, installed.....\$10,250  
All engines and oil. Header exchange must be rebuildable core.

**REBUILD DIESEL L/B ENGINES**

CAT	FORD
C-7.....\$8,895	6.0 PIS.....\$4,995
3204.....\$5,350	6.4 PIS.....\$5,550
3208.....\$5,850	6.9 - 7.3 IDL.....\$3,695
3304.....\$5,650	7.3 PIS.....\$3,995
3306.....\$5,995	
	<b>GM</b>
	6.2/6.5T.....\$3,395
	6.6 Duramax.....\$4,595
	<b>ISUZU</b>
	4BD2.....\$6,495
	<b>C-7 CATERPILLAR INFRAME</b>
	STARTING AT \$10,895

**REBUILD DIESEL CYLINDER HEADS**

GM	ISUZU
6.2 - 6.5.....\$425 ea	4BD1 or BD2.....\$995
6.6 Duramax.....\$775 ea	
	<b>DODGE &amp; CUMMINS</b>
	4BT - 3.9.....\$795
	6BT - 5.9, 12V.....\$895
	6.0 Power Stroke.....\$775 ea
	6BT-5.9, 24V.....\$1,095
	7.3 Power Stroke.....\$495 ea
	6.9 - 7.3 IDL.....\$425 ea

**LOOKING FOR DIESEL ENGINE PARTS?**  
Give us a call! • NW Diesel & Engine Components • 503-314-5947

**R & G MACHINING AND ENGINE PARTS GRUMPY'S DIESELS AND TRUCK REPAIR**  
WE WORK ON TRUCKS, TRACTORS AND LOADERS  
MULINO, OREGON: 800-823-6038 SHOP: 503-829-6038