

**1600 Farm Equipment**

**John Deere 975 Switch Plow:** 4-bottom with spring reset and tension bold bottoms, excellent shape, less than 600 acres on plow, \$6,500. Gresham, OR. 503-209-8657



**Madge Rotoclear:** width 7'6", 9" depth, (56) self-sharpening tips, drum speed 360 RPM, 318 HP, 1,700 hours, very good condition, \$27,500. Corvallis, OR. 541-740-1398

**New Demo's**  
3pt. Tractor mounted backhoe, \$5,500. 3pt. 3m Stage engine powered air compressor, \$650. Keizer, OR. 503-881-3232



**New Portable restroom trailer:** GAP approved, \$3,500. 7' pull-flail, new blades \$6,500. Silverton, OR. 503-932-0039

**Nut Ranch Liquidation:** (5,000lb) digital bin scale GTE-USA, Rhino TW84 Rotary mower, (4) Thomas nut carts, field elevator K engine, \$800. Ford 9N with 6 Kimco scraper, 150 gallon Rears PakTank, 3-point sprayer, Howard 3-point seeder/spreader, (40) 4x4x2 like new wooden bins, 1982 Honda Big Red. Miscellaneous sorting tables etc. Pictures available. Make offers. Arbutle, CA. 530-756-0842



**ORCHARD SPRAYER**  
400 GALLON:  
Excellent condition, well maintained, ready for Spring, PTO drive, \$3,600. Chelan WA. Call Mike 509-470-0067

**1600 Farm Equipment**

**New Holland 357 Grinder Mixer:** good shape, \$3,000. Rosalia, WA. 509-523-3561

**Rebuilt V692 Detroit with Jake:** Small circular sawmill, Ford tractor, small CAT hydraulic blade. Ready to work. Buying non running skid steers and excavators, running or not. Longview, WA. 360-903-5002



**AG PRO AND DH SEPARATORS:**  
Have a twin Ag Pro galvanized and a DH all stainless separator. They are sitting idle at former dairy. Could be used possibly for nut washing or other process? would consider all offers. Silverton, OR. Mike 503-949-4551. Pictures on request.

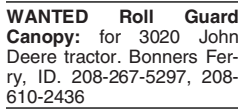
**Retirement Sale:** Hesston 9260 rotary swather, (2) Freeman balers, Ford 8630 MFWD tractor, IH 186 hydro tractor, IH 504 tractor+ low crop tools. McArthur, CA. 530-604-4222

**Used International 725 Tub Grinder:** \$4,850. Colville, WA. 509-684-2575

**WANTED AgTec 5004 Sprayer:** Gresham, OR. Tim 503-209-8657

**WANTED Japanese Diesel Tractor:** Kubota, Yanmar, John Deere, ETC. Older small or mid sized 4WD diesel tractor with loader. CASH buyer. Chehalis, WA. 360-304-1199

**WANTED Roll Guard Canopy:** for 3020 John Deere tractor. Bonners Ferry, ID. 208-267-5297, 208-610-2436



**Weiss JD40 Nut Sweeper:** 7'6" rebuilt sweeper head, 2,000 hours, diesel engine, \$25,900. Aurora, OR. 503-849-9116

**1600 Farm Equipment**

**WANTED Small Bean Harvester:** Stationary, pull-behind or small self propelled. Ferndale, CA. 707-599-5562

**1600 Farm Equipment**

**WANTED Strawberry Transplanter:** Good condition. Pleasant-Hill, OR. 541-870-5065

**MERIDIAN EQUIPMENT**  
Serving the Pacific Northwest Since 1973



**Case IH JX95**  
w/New Loader, 4WD, Cab, PTO, 3 Point. **\$32,500**



**Used Wooden Poles**  
7' long, 3" or 4" wide, sold in bundles of about 100. **\$2 per pole** (sold only by the bundle)



**Allis Chalmers 200**  
PTO, 3 Point, Rebuilt Transmission. **\$8,500**



**Ford 7610**  
w/Allied Loader, 4WD, PTO, 3 Point. **\$18,500**

**West Coast's m.e. Miller tire distributor**  
**www.meridianeq.com**  
**360-398-2141 • Bellingham, WA**

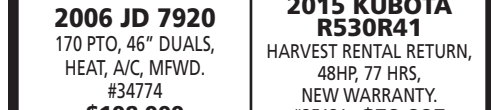
**WANTED Japanese Diesel Tractor:** Kubota, Yanmar, John Deere, ETC. Older small or mid sized 4WD diesel tractor with loader. CASH buyer. Chehalis, WA. 360-304-1199

**WANTED Roll Guard Canopy:** for 3020 John Deere tractor. Bonners Ferry, ID. 208-267-5297, 208-610-2436

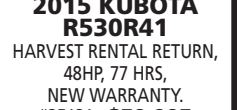
**WANTED AgTec 5004 Sprayer:** Gresham, OR. Tim 503-209-8657

**WANTED Japanese Diesel Tractor:** Kubota, Yanmar, John Deere, ETC. Older small or mid sized 4WD diesel tractor with loader. CASH buyer. Chehalis, WA. 360-304-1199

**WANTED Roll Guard Canopy:** for 3020 John Deere tractor. Bonners Ferry, ID. 208-267-5297, 208-610-2436



**2006 JD 7920**  
170 PTO, 46" DUALS, HEAT, A/C, MFWD. #34774 **\$108,000**



**2015 KUBOTA R530R41**  
HARVEST RENTAL RETURN, 48HP, 77 HRS, NEW WARRANTY. #35131 **\$59,995**



**2015 JCB TM320**  
125HP, TELESCOPIC BOOM, 6 SPEED TRANS, AIR RIDE SEAT. #35539 **\$128,500**



**2015 FALC GAMMA 5000P**  
16.5' FOLDING TILLER, REAR ROLLING BASKETS. #1735 **\$55,995**

'99 JCB 3185 FASTRAC, FRT 3 PT & PTO, 7877 HRS. \$46,000  
'05 JCB 3220 FASTRAC, 230HP, 4307 HRS. \$66,000  
'07 JCB 8250 FASTRAC, 270 HP, CVT TRANS, 3645 HRS. \$139,000  
'06 CLAAS ROLLANT 250CR HIGH MOISTURE ROUND BALER \$19,500  
'03 CLAAS 880 28' ROTARY RAKE, RECONDITIONED. \$19,900  
'97 CLAAS 880 410 HP, 2WD, RUNS GOOD, AS IS. \$39,900  
'05 CLAAS 900 SPEEDSTAR 3985 HRS, KP, AUTO LUBE. \$129,000  
'02 CLAAS 870 2200 HRS, FULLY REBUILT, 450 HP. \$199,000  
'08 CLAAS 960 4WD, 650 HP, SCHERER KP, 1266 CH HRS. \$285,000  
'05 JD 7920, MFWD & IVT, DUALS, 746 LDR, 6100 HRS. \$107,000  
'11 JD 7230R W/FRONT 3PT & PTO, 4305 HRS. \$159,000  
'08 JD 7430, 3 RMTS, 741 LDR, MFWD, 4200 HRS. \$81,000  
'89 HESSTON 8400 W/14' SPECIAL HEADER, DUAL SICKLES. \$14,900  
'04 HESSTON 9260 SP MOWER COND., 15' 185HP, 1112 HRS. \$59,000  
'05 KUBOTA M8200 NARROW, CAB, 12-SPEED, 845 HRS. \$28,900

**SCHOLTENS EQUIPMENT**  
LYNDEN, WA  
**1.800.433.5480**  
OVER 500 PIECES OF EQUIPMENT PICTURED ON:  
**www.scholtensequipment.com**

'99 JCB 3185 FASTRAC, FRT 3 PT & PTO, 7877 HRS. \$46,000  
'05 JCB 3220 FASTRAC, 230HP, 4307 HRS. \$66,000  
'07 JCB 8250 FASTRAC, 270 HP, CVT TRANS, 3645 HRS. \$139,000  
'06 CLAAS ROLLANT 250CR HIGH MOISTURE ROUND BALER \$19,500  
'03 CLAAS 880 28' ROTARY RAKE, RECONDITIONED. \$19,900  
'97 CLAAS 880 410 HP, 2WD, RUNS GOOD, AS IS. \$39,900  
'05 CLAAS 900 SPEEDSTAR 3985 HRS, KP, AUTO LUBE. \$129,000  
'02 CLAAS 870 2200 HRS, FULLY REBUILT, 450 HP. \$199,000  
'08 CLAAS 960 4WD, 650 HP, SCHERER KP, 1266 CH HRS. \$285,000  
'05 JD 7920, MFWD & IVT, DUALS, 746 LDR, 6100 HRS. \$107,000  
'11 JD 7230R W/FRONT 3PT & PTO, 4305 HRS. \$159,000  
'08 JD 7430, 3 RMTS, 741 LDR, MFWD, 4200 HRS. \$81,000  
'89 HESSTON 8400 W/14' SPECIAL HEADER, DUAL SICKLES. \$14,900  
'04 HESSTON 9260 SP MOWER COND., 15' 185HP, 1112 HRS. \$59,000  
'05 KUBOTA M8200 NARROW, CAB, 12-SPEED, 845 HRS. \$28,900

**Farm Equipment for SALE**

- International Springtooth Vibra-Shank - 55 ft. \$4,500
- Calkins Springtooth 36 ft. \$3,500
- John Deere 330 Disc 30 ft. \$8,000
- John Deere 800 50 ft. Rodweeder. \$3,000
- Summers Harrow 74 ft. Herman Spring Harrow. \$15,000
- Coil Tine Harrow 250 per section
- Hay Grapple. \$2,250
- International 800 10 Bottom Plow. \$5,500
- 1973 Cabover Kenworth w/22' bed. \$7,000

**Milton-Freewater, Oregon**  
**509-386-4876**

1-1/1#T4D

**Ask about our rental/purchase program**  
- includes 100 hrs of use per month  
- free delivery to the Treasure Valley

- FORAGE HARVESTER:** 2006 JD 7800; 1400 cut hrs., only 232 hours on new engine installed 2012, 3 heads available. \$98,500  
**4 AVAILABLE:** 2012 JD 6100D; cab, 2WD, 3200 hours. \$29,500  
2012 JD 6100D; cab, 2WD, 431 hours, has powertrain warranty until 11-16-17 or 5000 hrs. \$36,500  
2012 JD 6125R MFWD; 2300 hours, 24 spd, PQ. \$59,500  
2012 JD 6125R MFWD; 2600 hours, TLS auto track. \$59,500  
JD 7610 MFWD; Powershift, 6000 hours. \$35,000  
JD 7320 MFWD; PQ, 10,000 hours. \$35,000  
2013 JD 6140M; 1200 hours, extended warranty. \$67,000  
2010 JD 7230 PREMIUM; 16 spd, PQ, 5020 hours. \$53,500  
2013 JD 6150R; 932 hours, existing warranty, auto track. \$89,500 REDUCED \$79,500  
2012 JD 6170R; 2400 hours, extended Powerguard warranty until Oct '16 or 5000 hours. \$89,500  
2008 JD 7830; 6600 hours, power quad, duals. \$67,500 REDUCED \$59,500  
2012 7200R; 4040 hours, 20 spd, PQ. \$85,000 REDUCED \$79,500  
2012 7200R; 4340 hours, duals, PQ. \$85,000 REDUCED \$79,500  
**2 AVAILABLE:** 2012 8235R; 6600 hours, extended Powerguard warranty until fall of 2016. \$78,500  
2012 JD 8310R ILS; front and rear duals, 1600 hours. \$139,000  
2010 JD 8295R; 5035 hours, duals, weights, quick hitch. \$109,000  
2001 JD 8410; 7300 hours, weights, duals, auto track ready. \$69,000 REDUCED \$59,500  
JD 8300 MFWD; all new radials. \$45,000  
JD 9400; Powershift, 7500 hours, 710 metrics. \$39,000  
2011 JD R450 WINDROWER; CMW995 rotary head. \$65,000  
2008 KRONE BP12130; 4x4 baler, low bale count, bad bale chamber parts only. \$9500

Call Chris Ray  
(541) 446-3265 • Cell (208) 880-6344  
www.ray-brothers.com  
Email for more info  
CHRISRAY@RAYBROTHERS.NET

1600-15-1/1#17

**NW MIXER FEEDERS**

"We Sell The Best...and Service The Rest!"  
15958 Gunfire Rd Caldwell, ID 83607



Give us a call today (208) 459-2750 to get our special pricing on in-stock inventory before the end of the year!

- New Inventory:**
- 2015 Rotomix 1355 on 2015 Mack \$260,000
  - 2015 Rotomix 1355 on 2015 Peterbilt \$280,000
  - 2015 Rotomix VX515 Vertical Wagon \$35,900
  - Kirby 6 Bale Feeder \$46,000
  - Kirby 6 Bale Straw Spreader \$37,000
- Used Inventory:**
- Kuhn/Knight 51100 on 2007 Freightliner \$73,900
  - Laird/Kirby 600 Horizontal Feed Wagon \$22,700
  - Kuhn/Knight 5185T Vertical Feed Wagon \$42,500

(208) 459-2750  
www.nwmixerfeeders.com

"Quality Equipment Built to Last"

**AG-BAG**

Forage Solutions  
DEUTZ FAHR LS TRACTOR



**LS XU5055**  
55HP, 1616 trans., 2 remotes, loader, 5 yr warranty. \$28,699



**LS XR3037HC**  
37HP, HST, cab w/ac, loader, 5 yr warranty. \$25,997



**MONTANA 5740**  
57HP, 2 remotes, loader, new front tires, 900 hours. \$13,700



**MAXILATOR**  
accumulator/grapple combo, demo unit. \$5,900



**TUBELINE TL100R**  
bale wrapper, NEW. \$7,699



**BW1800M**  
Stationary bale wrapper. \$12,977

**NEW LS TRACTORS**

- G3033H, 33hp, HST, ldr, #851. CALL
- XR3037HC, 37hp, HST, cab, ldr, #201. CALL
- P7040S, 97hp ROPS, ldr, #258. CALL
- XR 4040 G, Gear, Ldr, 40hp, Stk#320. CALL
- XR 4046 H, HST, Ldr/Bh, 46hp, Stk#511. CALL
- XU 5055, shuttle, ROPS, Ldr, 55hp, Stk#204. CALL
- XJ 2025H, HST, Ldr, 25hp, Stk#150. CALL

**NEW KIOTI TRACTORS**

- CK 3510HB, 35hd, HST, ldr, #259. CALL
  - CK 4010HB, 40hp, HST, ldr, #233. CALL
  - DK 5010MB, 50hp, ldr, #101. CALL
  - NX 5010MB, 50hp, HST, ldr, #045. CALL
  - PX9020C, 91hp, ldr. \$5,100 Rebate
  - NX6010H, 60hp, HST, ldr. \$4,000 Rebate
- IN STOCK IMPLEMENTS**
- Maxilator Accumgrapple, DEMO. \$5,900
  - Land Pride RCR1542, NEW. \$899
  - Tubeline TL1000R bale wrapper. \$7,699
  - Whetcom Sawdust Blower, Used. \$1,900
  - BW 1800 Stationary Wrapper, New. \$12,977
  - Road Boss 5' grader #USA. \$2,395
  - W5 round bale grab, Stk#430. \$2,675
  - W5 3pt round bale feeder, Stk#706. \$1,995
  - W5 5S round bale feeder, Stk#908. \$2,599
  - Stoll round bale grab, Stk#060. \$2,295
  - Used Two Basket Tedder. \$2,000
  - Champ Rough Terrain Forklift. \$4,000

(503) 741-2108  
www.ag-bagfs.com • Astoria, OR

1-4/1#8

Made For Work!  
**4x4 Mini Trucks**  
www.cape-ape.com  
503-842-4145  
1600-43-11-2/18



**Challenger RB453 Silage Round Baler**  
Auto Tie **\$15,000**

**NEW McHale V660 Belt Baler,**  
Three Belt Variable Bale Chamber with Double Drive. **\$54,000**

**2000 Claas Rollant 250RC Round Baler**  
Low Bales **\$13,500**

**Deutz Fahr MP122 Round Baler**  
Rotary Cutter, Net **\$10,500**

**EQUIPMENT LLC**  
Lynden, WA  
360-815-1597  
tjequipmentllc.com

1-7/124

**WATER**  
The #1 Issue in the West!  
Capital Press Ag Weekly will focus on this most crucial resource in an award-winning special section.  
Publishes Feb. 5, 2016

This section will provide valuable background and an insightful look at the current water situation with a forecast of what may happen in the future.

Reach our print and online readers by advertising in this special section.  
Ad space deadline is Jan. 8, 2016

**Capital Press**  
The West's Ag Weekly

CONTACT YOUR CAPITAL PRESS MEDIA CONSULTANT TODAY!  
Or Call 800-882-6789  
www.capitalpress.com  
1600-50-4-2/1#3

**MASSEY FERGUSON**

The new Massey Ferguson® 4600M Series raises the bar again on utility tractors. These popular tractors are perfect for hay, dairy, livestock and mixed-use farm operations, as well as landscapers and large property owners. They breeze through moving and loader work, while maneuvering easily around the barn. And with their innovative power shuttle transmission and new deluxe cab option, even the longest days will be more productive and comfortable.

**YOUR LOCAL TRACTOR & IMPLEMENT STORE SINCE 1889**

**Fischer Mill Supply Inc.**  
HESSTON  
(503) 781-0846 Dean • (503) 329-9232 Mark  
(503) 631-3411  
www.fischermillsupply.com

• Tractors • Feed • Hardware • Lawn Equipment  
**20990 S. FISCHER MILL RD, OREGON CITY, OR**  
Exit #10 off I-205 to 2nd light. Right to Redland Rd. to Redland Store. Left to Fischer Mill Supply. 9 miles from I-205.

**TRACTORS**

- Yanmar 336D w/loader, 4x4. \$70,950
- Yanmar 186D, 4x4. \$3,500
- Farmall A, runs great. \$1,500
- Case IH 245 4x5. \$5,250
- JD 5075M 4x4, loader ready, 288 hrs. \$45,500
- MF 1160 44hp 4x4 Loader. \$13,500
- MF 1100, nice shape. \$8,950
- Oliver 1855, new rear rubber. \$6,500
- Case IH 385, new engine, diesel. \$7,650
- Case 470, collector tractor. \$8,950
- Farmall, A&C with cultivators. CALL

**HAY**

- MF 1839 14x18 Baler, light use. \$19,500
- Hesston 4500 Baler. \$4,650
- NH 575 Baler. \$12,500
- NH Super 1048 Bale Wagon. \$18,500
- NH 1002, pull type, nice. \$4,750
- Sitrex Tedder/Rake Combo. \$2,750
- Sitrex RP4, wheel rake. \$1,250
- Hesston 2 Rotor Tedder, pull type. \$2,750
- Gehl/Hesston 7' Mower/Conditioner. \$3,750
- 5 Bale "Bale Handler" w/light, rotator. \$2,750
- Hesston 550 Round Baler. \$6,500

**TILLAGE**

- Howard HR 50 9" Construction Tiller. \$12,500
- Howard HR-7 HD 60" Tiller. \$1,650
- Maschio MC 155 72" Tiller. \$2,250
- Hutchmaster Offset Disk, 13', 24' blades. \$5,250

**MISC.**

- 4 Bottom IH Plow. \$1,850
- 2 Bottom Plows. \$350-\$850
- 3 Bottom Plows. \$450-\$1,200
- Rear Blades, Box Scrapers. \$300-\$800
- Howse Rotary Cutters, 4'; \$945, 5'; \$995, 6'; \$1,295
- Post-hole Diggers. HD 9"; \$795, HD 12"; \$895
- 18" augers only; \$395
- 24" augers only; \$495
- 10' Flail, pull type. \$2,850

**INDUSTRIAL**

- IH TD-7E Crawler Dozer 1700 hrs. \$16,500
- Case 580E Loader/Backhoe. \$13,500

**WINTER SERVICE SPECIAL** 10% off MF/Hesston parts and all labor discounted pick-up & delivery

**Parts Special Toy Special**

**10% OFF**  
Thru Dec. 31, 2015

**10% OFF AGCO Parts, In Stock & Stock Orders.**

**NEW YEAR SPECIALS! • NEW YEAR SPECIALS! • NEW YEAR SPECIALS!**

**www.linnbentontractor.com**  
**INN LB BENTON TRACTOR Co.**  
Tangent, OR 541-926-1811  
33599 Hwy 99E  
Silverton, OR 503-873-5355  
812 McClaine Street

**Kubota**  
EVENINGS CALL:  
Joe McDonald 541-905-6252  
George King 541-905-4699  
Scott Nelson 541-220-8755  
Larry Crooker 541-905-4060  
Micah Vaba 541-905-4006

**KUBOTA TRACTORS**

- #C013066 B9200HSD, 792 hrs, w/loader. \$7,995
- #C013243 M9000DTC w/ldr, 2703 hrs. \$31,450
- #C012768 L3800DT w/LAS25FL loader, 115 hrs. \$20,995
- #C004200 M8540HNB-1 narrow rops, 917 hrs. \$30,995
- #C013621 Bx1850 w/loader, 99 hrs. \$9,995
- #13HR93 M135GXDTSC-F, 640 hrs. HARVEST RENTAL RETURN
- #13HR48 L3560GST, 195 hrs. HARVEST RENTAL RETURN
- #12HR85 M126GXDT-C, 279 hrs. HARVEST RENTAL RETURN

**WINDROWERS & MOWER CONDITIONERS**

- #C007905 TM 700 disc mower PT. NEW. \$45,950 \$14,995
- #C012048 VR MC3300, 105" pull mower conditioner \$31,552
- #C011873 9352 windrower, 15' header, 1432 hrs. \$61,995
- \* MD 9352C w/972 draper header (Qty:6). \$61,995

**MOWERS & RAKES**

- #C004141 RCF2060, 60" Rotary Mower. \$1,790
- #C007823 AFM4214 All Flex mower, 14' header. \$16,500
- #C009489 Land Pride HD 84" rotary mower. \$4,890
- #C008032 LR72 72" landscape rake. \$995
- #C000386 LP RCMB6615 15' pull type. \$23,950

**TILLAGE**

- #C007838 RTA2072 72" rotary tiller. \$3,795
- #C007839 RTR 2570, 70" rev tiller. \$4,995
- #090395 GP CP600 sprayer boom. NEW! \$9,985 \$8,995
- #C