

**1380 Irrigation Equipment**

(1) 1/2 Mile Wheel Line: 5" Shur roll, 7" wheels, levers & sprinklers with hydraulic mover, disassembled and ready to load, \$9,800. Fort-Jones, CA. 530-468-2895

(200) 3"x30" Ames Plug/Gasket Sprinkler Pipe: \$1.00/foot. Arbutuck, CA. 530-756-0842

John Deere 450G Crawler: low hours, pipe layer, 2005 Midwest crane, \$32,000. Without crane, \$27,000. Mapleton, OR. 541-999-1991

Older Peirce 10 Tower Pivot: updated tower boxes, reverse kit, vision panel, \$14,000. Riley, OR. 541-620-0666

**Pivots:** Good, various lengths, all brands & late models. No rust. Plus some pivot parts, pumps and buried wire. Keizer, OR. 503-881-3232, 503-390-3210

**Used Drip Hose:** 1/2" diameter, approximately 500', \$20/roll OBO. Woodburn, OR. 503-348-8696

Watermaster & Evergreen Hose Reels: Salem, OR. 503-510-2396

**WESTERN WHEEL LINE:** Used Western wheel line, hydraulic driver, \$1,500. (10) 4" pipe & wheel combos, \$150/each OBO. Pasco, WA. 509-318-3577

**WHEEL-LINES AND MAINLINE:**

(8) 1/4 mile Wade wheel-lines with 4" pipe & 7" wheels. (2) have new Gheen movers. (6) @ \$5,000 & (2) @ \$7,500. You disassemble & haul. ALSO: (19) joints of 10" aluminum mainline R/L. (56) joints of 8" aluminum mainline R/L & (18) joints of 6" aluminum mainline H&L. Located in Primeville, OR. Please call for details 541-420-3563

Subscribe Now To Capital Press And Get Connected Directly To Regional Agricultural News! Call 1-800-882-6789

**IRRIGATION EQUIPMENT BOUGHT. SOLD. RENTAL.**

**New & Used Parts.**  
• Aluminum Pipe  
• Cert-a-lok  
• Siphon Tubes • HDPE  
• Sand Media Filters  
• Wheel Lines • Pumps



**Stockton Dixon • Turlock**  
Office: (209) 460-0450  
Fax: (209) 982-1832  
www.pacsouthwestirrig.com  
Carlos (209) 481-7677  
Jim (209) 986-0099  
1380-1-5-4/#18

**1390 Packing, Processing Eq.**

**GRASS SEED CLEANING EQUIPMENT**  
Used grass seed cleaning equipment: Cleaners (2) Clippers, (2) Crippen (1) large, (1) small, (3) Carters; (2) Debearders; (3) Air lifts; (2) suction fans; (1) Sutton AX-200 vibrator; Indents - Hart Uniflow cylinder separators. All offers accepted. Call Dale for more information 541-786-6029

**1410 Logging Equipment**

**WANTED DEAD OR ALIVE KICKING OR CRAWLING**

CAT 518 Skidder: plus parts. I'll pay cash! OR/ WA/ ID. 360-319-7998

Logging Equipment: "All where is, as is," all or best offer. John Day, OR. 541-575-1525

**1390 Packing, Processing Eq.**

**1390 Packing, Processing Eq.**

**1450 Forklifts**

(2) Kesmac 5000r Piggy-back Forklifts: 4-cylinder Kubota diesel, 10' lift height, 3WD, 1,600 & 3,130 hours. \$9,000 each. Dayton, OR. Please call 971-237-5466



1995 Hyster H-60-XM: propane, 3-stage, free lift, side shift, 48" forks, new paint, tires, services, ready to work, \$7,950. Silverton, OR. 503-550-7625

*There Are Always Great Deals In Capital Press Classifieds. Call Now And Add Yours!*  
**1-800-882-6789**

**Used Lift Trucks**

All New & Used Parts All sizes, makes & prices

**LIFT TRUCK SERVICE**  
**888-890-1450**  
forkliftsales.com  
Ellensburg, WA

**1470 Heavy & Indust. Equip.**

1970 International Dump Truck: 4-5 yard, low miles, \$4,200. Myrtle-Point, OR. 541-396-4469

**1979 CAT 977-L:** 14X series, new CAT rails rollers and 2 bar pads, demo bucket, ripper and canopy, very straight and tight, \$27,500.  
**Young Boom with Mounting Plate:** for D7 CAT, valving in excellent condition, \$10,750. Creswell, OR. 541-954-4080



1997 John Deere 892 ELC: hydraulic thumb+ 40" QC digging bucket, 85% undercarriage second. Tight, strong, dry, good looking machine. 9,810 hours, work ready, 71,000 weight, 13' stick, \$38,000. Gaston, OR. 503-789-3726



**2005 JOHN DEERE L35YD:** 444J loader with 3.5 yard bucket, 11,200 hours. Well maintained and clean, tires are good and interior is in great shape. Load rate scale installed, \$47,500 OBO. More pictures can be sent. Located in Salem OR. Please call Mike at 503-949-4551



2011 Bobcat E50 Excavator: thumb, hydraulic coupler, 3,183 hours, \$34,995. Portland, OR. 503-810-4146 www.thorpermachinery.com

420 E Caterpillar Backhoe: cab, 4-1 bucket, extend-a-hoe, 4WD, \$37,000. Silverton, OR. 503-932-0766



**BOOM LIFT JLG 40H:** Man lift, 40' boom, 4x4, dual fuel, clean machine. Harrisburg, OR. 541-905-31367

**1390 Packing, Processing Eq.**

**Wilson Equipment Rental & Sales**



**2006 Deere 700JXL**  
Erops A/C and heated cab, sweeps and screen, 6-way blade, free spool winch and fairlead, 3,000 hrs., good U/C. Very well maintained....  
**\$106,500**



**2010 Deere 544K**  
A/C and heated cab, 3yd bucket, hyd JRB Q-tach, good tires, 4,300 hrs, well maintained machine.....**\$99,500**



**2008 Deere 644J**  
A/C and heated cab, JRB hyd coupler, GP bucket, ride control, good tires, 7,000 hrs, nice tight machine...**\$99,500**



**2009 Deere 844K**  
A/C and heated cab, GP bucket, load scales, good tires, 9,000 hrs, well maintained machine...**\$169,500**



**2007 Cat 420EIT**  
A/C and heated cab, Q-tach MP bucket, E-stick, 4x4, 3,000 hrs, good tires, well maintained.....**\$59,500**



**2012 Cat 525C**  
Erops A/C and heated cab, blade, winch, dual function arch and grapple, good tires, very clean machine. **164,500**



**2012 Deere 648H**  
EROPS A/C and heated cab, blade, TC trans, ED axles, DF grapple, winch, good 3.5 tires, 3,300 hrs, well maintained and very clean.....  
**\$169,500**



**Ex-Government 2006 Challenger MT525B**  
**Brush Cutter**  
105 HP, 4x4, Erops A/C and heated cab, joy stick controlled, Little industries side boom rotary brush cutter, good tires, well maintained machine.....**\$74,500**

Financing Available Trades Accepted

**Randy**  
**541-830-3966**  
Cell# 541-944-5067  
White City, OR  
www.wilsonsequipment.net

**1470 Heavy & Indust. Equip.**

Angle Dozer: For D7E, F, G, with twin tilts. Excellent condition, nice condition, \$4,250. Pasco, WA. Jim Perkins 509-845-7228



Case 1150B Crawler: 6-way blade, 75% undercarriage, winch and arch, \$20,000 OBO. Tillamook, OR. 503-812-5750



Case 9020B: (15) ton excavator, hydraulic link thumb, recent update pump, good undercarriage, 7900 hours, 36" dig bucket, smooth clean up bucket, runs, operates excellent, \$25,000. Chelan, WA. 509-470-1867



**CAT 977K:** Newer undercarriage, D6d winch / fairlead, OROPS, sweeps, runs, operates excellent, \$15,000. Chelan, WA. 509-470-1867

**John Deere 450G Crawler:** low hours, pipe layer, 2005 Midwest crane, \$32,000. Without crane, \$27,000. Mapleton, OR. 541-999-1991



**LIKE NEW Late D8 2U CAT Dozer:** with canopy. Oil clutch, new undercarriage. Also have clearing blade, \$13,500. Aurora, OR. 971-715-9282

**MISC Heavy Equipment:** D6H: EROPS cab, U dozer with tilt ripper, new engine and new hydro pump, \$86,500. D-5N: 2000+/- hours, 6 way blade, ripper, \$106,500. D-5N: 2000+/- hours, 6 way blade, ripper, \$106,500. Scraper 613-B with cab, \$35,500. Scraper 613-B Rops, \$33,500. Kenworth water truck, 3800 gallon, commercial built, new engine and many new repairs, \$41,500. Salem, OR. 503-362-3055

**We'll Find Your PARTS!!**

*New & Used Parts, Accessories & Attachments for all your needs:* Allis-Chalmers, Austin-Western, Case, Caterpillar, Clark, International, Hough, Dresser, Galion, John Deere and more.  
\* MEMBER, NATIONWIDE PARTS LOCATOR SYSTEM \*

**Norcan Parts & Equipment**  
9423 N. Market St. • Spokane, WA 99207 • 509-466-3566  
TFN **1-800-586-3566** 1470-1-8-2/#14

**L-M**  
**L-M EQUIPMENT Company Inc.**  
P.O. Box 82111  
Portland, OR 97282  
(800) 228-0793  
(503) 235-3146  
fax (503) 235-3916  
**Leasing Available**  
www.LMEquipmentUSA.com  
1-4/#8

**1470 Heavy & Indust. Equip.**

Caterpillar D4H: high track, complete undercarriage. Call for price. Hayden, ID. 208-755-0685

**New 8' Brush Rakes:** with mounting brackets, \$1,050 each. **Clackamas Tractor**, Clackamas, OR. 503-655-1125

**Rails With Pads:** 9" pitch, Terex or others, good bushings, \$2,900/ pair; **New Terex C-6/ B230**, drive sprockets, 8" pitch; **Used Terex bottom and top rollers** Monmouth, OR. 503-831-2244 or 503-623-2089

**WANTED Bridge Crane:** 40' minimum, (5) ton minimum. Creswell, OR. 541-912-7807

**WANTED For Restoration:** Buy - Sell - Trade old logging related tools, parts, rigging, machines brochures. Also have Allis Chalmers, Terex, Linkbelt and Case parts. Grand-Ronde, OR. 503-879-5440 or Email: deck@partsunknownusa.com

**WANTED Wood Working Tools:** table saws and so on, for private use. Willing to buy out entire shop. Creswell, OR. 541-912-7807

**NOW RENTING! CAT-DBT SU**  
w/3-shank mounted ripper  
**ATIMACHINERY.COM**  
**888-461-0625**  
Five Points, CA 1-4/#18

**CASE INDUSTRIAL PARTS**  
We sell genuine, after market, and used CASE parts at discount prices nationwide. Call For Free Catalog.  
**CENTRAL EQUIPMENT**  
AFTER MARKET & USED PARTS  
Medford, OR  
**(888) 593-8749** 1470-5-8/185

**DON PEILA TRACTOR REPAIR • PARTS**  
*specializing in JOHN DEERE INDUSTRIAL EQUIPMENT*  
**Good Used, Reconditioned & After-Market Parts**  
Peilattractorrepair-parts.com  
**1-877-423-9746**  
**(541) 772-1801**  
Central Point, OR 1-1/185  
**SATELLITE PARTS LOCATING SYSTEM**

**1480 Farm Equipment Parts**

2002 BB900 Baler: good condition, chambered, \$9,500. Merrill, OR. 541-892-7117

Discount Tractor Parts: new, used, rebuilt, local warehouses. Garfield, WA. Call 800-967-8185 or order online at: www.drapractor.com

**1490 Antique Farm Eq. & Parts**

1949 John Deere Model A: plus #5 7' sickle mower. Everything works, runs good, (1) new rear tire, good rubber, needs paint, \$3,800. Estacada, OR. 541-720-1762

**1520 Hay Equipment**

2002 BB900 Baler: good condition, chambered, \$9,500. 1989 Freightliner with 24' flatbed and setback front axle, \$7,500. 1970 24' Brown trailer, \$4,000. Merrill, OR. 541-892-7117

Does your business need calls, customers and sales? Advertise in Capital Press Line Ad Classifieds. Call 1-800-882-6789

**1480 Farm Equipment Parts**

**1520 Hay Equipment**

#1 Bale Wagons: Buy, Sell, New Holland 2&3 wide self-propelled, pull-type models, parts, tires. Caldwell, ID. 208-880-2889 www.balewagon.com

**Ag-Pro SR4 Bale Stacker:** easy-on high lift loader off of Case IH 7220. Echo, OR. 541-379-2209

Freeman 330 Self propelled Baler: in good condition, \$6,000. Adin, CA. 530-260-1251



**HAY SQUEEZE:** 2000 Sunny D Hay Squeeze conversion with new Clerf forks and scales on a Ford C-7000 chassis. Nice machine, \$65,000 OBO. Tulelake, CA. Daniel 541-892-7553

**1480 Farm Equipment Parts**

**Nampa Tractor Parts**  
**(208) 467-4430**  
Nampa, ID  
Most Parts 1/3 New

**BIG TRACTOR PARTS, INC.**  
~ GEARED FOR THE FUTURE ~

**STEIGER TRACTOR SPECIALIST**  
1. We are your source for new & used Steiger drivetrain parts Series 1 - 9300 Series.  
2. We rebuild Spicer manual transmissions, Fugi power shift transmissions, dropboxes & axle with ONE YEAR WARRANTY!  
3. We now rebuild computer control boxes for Steiger tractors 1982-1999.  
**800-982-1769**  
www.bigtractorparts.com

**Call For All Your Parts Needs**  
**JUST IN FOR PARTS ONLY**  
**JD 8300 MFWD**  
Celebrating 25 years in the agricultural machinery business.  
Our yard has 1/2 miles of road, with machinery on both sides. FREE TOURS GIVEN DAILY.  
Call Toll Free: **(888) 372-4020**  
www.nyssatractor.com  
sales@nyssatractor.com  
**Nyssa Tractor & Implement**  
Nyssa, OR 1-2/#17

**Farmland Tractor Supply**  
**New-Reman-Used Tractor & Combine Parts**  
**New & Reman JD PowerTech Engines**  
4.5L / 99HP \$9,500  
6.8L / 175HP \$16,000  
Tangent, OR 877-928-1646  
**LED LIGHTS TRACTORS, COMBINES, AND MORE!**  
**TIGERLIGHTS**  
TL350 5000 LUMENS \$105  
TL500 6900 LUMENS \$115  
**WINTER SALE! 10% OFF ALL ITEMS!**  
TIGERLIGHTS.COM / 877-928-1646  
1520 Hay Equipment 1520 Hay Equipment

**STACK RETRIEVERS**  
**HAUSER BUILT Farm & Machine LLC**  
**928-300-0570 928-567-6230**  
Full Warranty • Large or Small Bales  
Also handles 2-string bales in a 3-wide configuration  
www.hauserbuilt.com • Camp Verde, AZ  
An Investment In Quality Never Stops Paying You Back.

**CLERF HAY EQUIPMENT**  
Manufactured by **HarvestCo**  
www.clerfhayclamp.com  
**Clamps Custom Fit to Carriage Mounts & Loaders**  
C1300 TELEHANDLER C950 BALE CLAMP  
C3000 HEAVY DUTY SQUEEZE WITH SIDE SHIFT WITHOUT SIDE SHIFT  
We Also Rebuild & Repair All Brands of Hay Clamps  
**888-338-0077 • info@clerfhayclamp.com**  
Ellensburg, WA 1-1/424

**1520 Hay Equipment**

**Massey Ferguson 2170XD:** 3x4 baler. **Massey Ferguson 2170** 3x4 baler. Delivery Available. Colusa, CA. 530-640-2274

**New Holland BC5070 Hay Liner:** 14"x18" bale, New Holland warranty and financing, 0% for 72 months OCA. As low as \$450/month. Colville, WA. 509-684-2575

**New Holland DB313:** hydrowindrow, New Holland warranty and financing, 0% for 72 months OAC. As low as \$620/month. Colville, WA. 509-684-2575

**New Vermeer 6640 Rancher Round Baler:** larger tires, hay saver wheels, with net wrap option. 50 HP minimum. As low as \$650/month with 0% financing. Colville, WA. 509-684-2575

**New Vermeer Rebel 5420 round baler:** warranty and financing. Net wrap, 5x4 bale size, as low as \$388/month OAC. Minimum HP requirements: 40 HP. Colville, WA. 509-684-2575

**PRO AG BIG BALE SCOOP:** 2003 HDRSR, (6) bale stacker, good working condition, new pins/ bushings, \$18,000. Molalla, OR. 503-209-1635

Round Baler Vermeer 605C: good belts, everything works, \$1,000. Seaside, OR. 503-440-4925

**Squeeze Lift 165 Hyster:** Short mast, V6 Chevy motor, propane, squeezes tight, \$12,750. Creswell, OR. 541-954-4080

**1540 Orchard, Vineyard Equip.**



(500) Gallon Rears Air Blast Sprayer: constant velocity hitch, leaf brushes around the fan, hydraulic, driven fan, \$11,500. Aurora, OR. Call J.O. 503-849-9116

**Trellising Vineyards, Berries and Trees:** We've got quality trellising supplies at competitive prices. McMinnville, OR. 1-800-653-2216

**RCO Baits**  
**Gophers • Squirrels Voles-Moles**  
Ask for your Capital Press Discount  
Dealer Locator  
**1-800-214-2248**  
Harrisburg, OR 1-1/185

**Looking for ORCHARD/ VINEYARD PROPERTY?**  
Go to Class. 387  
**Capital Press**  
www.capitalpress.com  
1540-1-53-1/#13

**1560 Tractors**

#1 Massey Ferguson Tractors: Oregon City, OR. 503-781-0846

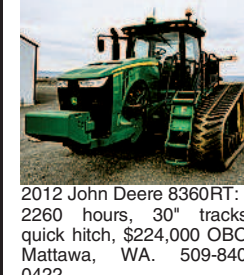


**2007 John Deere 7830:** MFWD, with duals, IVT left hand reverser, (4) remotes, Xenon lights, leather active seat, 2,220 hours, excellent condition \$123,000. Chehalis, WA. 360-520-5347



**2007 New Holland TL100 A:** 12-speed Ford in reverse, (2) hydraulic remotes, 4WD, cab A/C, 1,550 hours, 100 HP, \$37,500. Salem, OR. 503-868-7265

**2010 CASE 385 WHEEL TRACTOR:** Bought new from OTC. PTO, deluxe cab, field speed control, GPS ready, front and rear differential locks, wheel weights plus rear Case weights, (4) remotes plus low pressure return, 620/70R-42 tires. Clean tractor with full service records, 2994 hours, \$155,000. Lind, WA. 509-660-1100 or 509-660-0570.

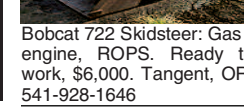


2012 John Deere 8360RT: 2260 hours, 30" tracks, quick hitch, \$224,000 OBO. Mattawa, WA. 509-840-0422

5310 John Deere: with front end loader, 8' blade, 200 gallon sprayer, 792 hours, \$30,000. New-Plymouth, ID. 801-440-6999

5425 N: 4WD, very good condition, \$17,500. 2012 T4030 V, 360 hours, cab 4WD. © Silverton, OR. 503-932-0766

Allis Chalmers 8030: 2WD, duals and weights, 6451 hours, \$15,000 OBO. Klammath-Falls, OR. 541-891-4513



Bobcat 722 Skidsteer: Gas engine, ROPS. Ready to work, \$6,000. Tangent, OR. 541-928-1646

**Come check out The Efficient way to Load, Lift, Trench, Mow AND MORE at Fischer Mill Supply**



**Fischer Mill Supply Inc.**  
20990 S. Fischer Mill Rd.  
Oregon City, OR 97045  
(503) 631-3411  
www.fischermillsupply.com  
1-4/#8