

540 Fuel, Heating, Firewood

Oak and Ash Firewood: \$250/cord, you haul. Vader, WA. 360-880-6424

WANTED Blaze King Stove: West Richland, WA. 509-521-9827, evenings

570 Christmas Trees

(1,000+) Beautiful Nordmann: 7'-13', must see Chehalis, WA. 360-520-3760

(1500) Grand Fir: 6'-9', (Idaho Seed Source- White Fir), \$18.50/ tree CBL. (500) Mountain Grown Alpine Fir: 6' and up. \$3.00/ foot, CBL. (400) Concolor Fir: 6'-8' \$18.50/ each. Spokane, WA. 509-701-5388



(200) Commercial Grade Large Noble Fir: up to 20'. (800) 6-8' Nobles, also Sheared and non-sheared Douglas 7'-12'. Sandy, OR. 503-695-2982

(2000) Natural Nobles: (200) 12'-13' sheared. Grand Fir 6'-8' tall, \$11-\$13. (100) 8-9' Nordmann. Molalla, OR. 503-701-7045

(2500) Grand Firs: Natural and sheared, 6-9 feet, \$8.00. Salem, OR. 503-999-8866

(400) Choice Nordmann: 7' to 8', \$16.00 CBL available. Wilsonville, OR. 503-682-2290



(6000) Noble Fir: (6) fields, all sizes, #1, 6-7', \$21.00. #2, 5-10', \$15.00-\$20.00. (800) utility trees available, \$8.00, 4-10'. Hillsboro, OR. 503-849-7322

Attention Christmas Tree Growers: Complete management services available. Planting, cultivation and harvesting. Also, sales available. High quality work, Licensed and bonded, backed by 50 years experience, BTN of Salem, OR. 503-881-8610.

CHRISTMAS TREES FOR SALE:

Noble Fir, beautiful, cultured, 8' 9'-12". Douglas Fir, field run, 5 1/2'-8'. Stayton, OR. Please call 503-881-2630

Evergreen Christmas Tree Baler: with shaker. Good shape, \$7,000. Molalla, OR. 503-829-4150

Grand Fir Trees For Sale: 6'-7', sheared. Lebanon, OR. Please call 541-990-0064

Greenbriar Ag Management Offering Professional Christmas Tree Services: Experienced, quality work, planting through harvesting, stump grinding. Sales, brokering, licensed & bonded contractor. Farm & Forest-Labor License #10628 Stayton, OR. 503-932-2323 greenagmngt@vwi.com

Looking For a Good Deal: on trees and Christmas tree lot supplies/ stands. San Antonio, TX. 210-337-8032

Noble Fir Boughs: good color, road accessible, U-harvest, \$0.15/ lb. Whispering Ridge Trees, Gaston, OR. 503-853-4958.

Noble Fir: uncultured, 12'-16" tall, great color, Corvallis, OR. 541-224-1392

Nordmann Fir Christmas Trees: 1" Harvest. Salem, OR. 503-390-0669

NORDMANN FIR: Premium quality 4'-15', full cultured or un-sheared. Nordmann Fir Boughs: \$500/ ton. Rochester, WA. 360-789-1911



TREE BALER: Very nice, in great condition, (cable). Also vinyl tree protectors. Oakville, WA. 360-273-3516

WANTED Buying Cultured Noble Fir 4'-10': Also Natural Nobles 6'-20'. Eagle Creek, OR. 503-705-1710

590 Help Wanted

AGRICULTURAL POSITIONS: ALL FEES PAID BY OUR EMPLOYERS. 308-382-7351. REVIEW OUR WEBSITE. www.hansenagriplacement.com

DAIRY POSITIONS: Nationwide. Extremely Good Employers. Excellent pay/ benefits. 308-382-7370. Review Website: www.hansenagriplacement.com

CATTLE DRIVER POSITION:

Northwest Beef Express, Hermiston, OR. \$2,000 sign-on & retention bonus. Guaranteed year round salary. Benefits: 401K, family health insurance, vacation, and home time. Clean CDL required and cattle handling experience preferred. If interested call 541-856-3203 or nbxtrucking.com

BEST SELLERS . . .

"...The phone rang off the hook." Vanveldehuizen Dairy • Turner, OR Call and list your BEST SELLER! 1-800-882-6789

NOTICE

It is unlawful employment practice for any employer or employment agency to print or circulate or cause to be printed or circulated any statement, advertisement or publication, or to use any form of application for employment, or to make any inquiry in connection with prospective employment which expresses directly or indirectly any limitation, specifications, as to race, religion, color, sex, national origin, or by age between the ages of 18 and 65, or any intent to make only such limitation, specification or discrimination, un-less based upon bona fide occupational qualification.

590-1-52-5/#13

590 Help Wanted

Automotive Technician/ Farm Mechanic: California, 3 years experience as automotive \$50k. 308-382-7399, www.hansenagriplacement.com

John Deere Landscapes: is looking for an experienced Seed Production Manager for its Portland, OR. location. Please visit the Careers site to view the job description and apply: http://jdl.submit4jobs.com/

GENERAL MANAGER

Cooperative Agricultural Producers Inc. (CO-AG), a Washington Corporation headquartered in Rosalia, is seeking a skilled General Manager to lead our farmer owned cooperative. CO-AG was established on June 1, 1998; we currently have (674) members. We have (21) locations in Eastern Washington and North Idaho including (4) branch offices, (3) seed processing facilities, (2) Pea and Lentil processing facilities, and (35) storage facilities. We also have a Trucking department consisting of three tractors with doubles. Our primary crops are Wheat, Barley, Peas, and lentils; with several varieties of each. We are guided by a seven member Board of Directors and have (48) full time employees. We have projected sales of \$87,000,000, this fiscal year. We are a 1/3 owner in McCoy Grain Terminal; a grain marketing venture with a (110) car shuttle facility and access to several river terminals. Salary range for this position is \$95,000 to \$125,000. A job description and current summary of benefits can be found on our web-site. www.co-ag.com If you are interested in a rewarding and challenging career, please send resume and professional references to: dave@co-ag.com Closing date is November 15th, 2015. CO-AG is a Drug Free Business

Executive Director Opening: Klamath Water Users Association seeks a self-motivated, productive individual to provide leadership and oversight to the organization's constituents with regard to natural resources issues, with an emphasis on water resources and power costs. The position covers Association administration, policy development, strategic planning, evaluation of technical material, communications, and a variety of other policy and water-related work. Salary will be commensurate with education, qualifications, and experience. KWUA also offers a competitive employee benefit package. Klamath Falls, OR. For more information, go to www.kwua.org

Looking For a Good Deal: on trees and Christmas tree lot supplies/ stands. San Antonio, TX. 210-337-8032

Noble Fir Boughs: good color, road accessible, U-harvest, \$0.15/ lb. Whispering Ridge Trees, Gaston, OR. 503-853-4958.

Noble Fir: uncultured, 12'-16" tall, great color, Corvallis, OR. 541-224-1392

Nordmann Fir Christmas Trees: 1" Harvest. Salem, OR. 503-390-0669

NORDMANN FIR: Premium quality 4'-15', full cultured or un-sheared. Nordmann Fir Boughs: \$500/ ton. Rochester, WA. 360-789-1911

Looking For a Good Deal: on trees and Christmas tree lot supplies/ stands. San Antonio, TX. 210-337-8032

Noble Fir Boughs: good color, road accessible, U-harvest, \$0.15/ lb. Whispering Ridge Trees, Gaston, OR. 503-853-4958.

Noble Fir: uncultured, 12'-16" tall, great color, Corvallis, OR. 541-224-1392

Nordmann Fir Christmas Trees: 1" Harvest. Salem, OR. 503-390-0669

590 Help Wanted

AGRICULTURAL POSITIONS: ALL FEES PAID BY OUR EMPLOYERS. 308-382-7351. REVIEW OUR WEBSITE. www.hansenagriplacement.com

DAIRY POSITIONS: Nationwide. Extremely Good Employers. Excellent pay/ benefits. 308-382-7370. Review Website: www.hansenagriplacement.com

CATTLE DRIVER POSITION:

Northwest Beef Express, Hermiston, OR. \$2,000 sign-on & retention bonus. Guaranteed year round salary. Benefits: 401K, family health insurance, vacation, and home time. Clean CDL required and cattle handling experience preferred. If interested call 541-856-3203 or nbxtrucking.com

BEST SELLERS . . .

"...The phone rang off the hook." Vanveldehuizen Dairy • Turner, OR Call and list your BEST SELLER! 1-800-882-6789

NOTICE

It is unlawful employment practice for any employer or employment agency to print or circulate or cause to be printed or circulated any statement, advertisement or publication, or to use any form of application for employment, or to make any inquiry in connection with prospective employment which expresses directly or indirectly any limitation, specifications, as to race, religion, color, sex, national origin, or by age between the ages of 18 and 65, or any intent to make only such limitation, specification or discrimination, un-less based upon bona fide occupational qualification.

590-1-52-5/#13

590 Help Wanted

Farm/ Livestock Assistant: Nevada. \$50,000. See our website for position details EH-6071 308/382-7399 www.hansenagriplacement.com

AG MECHANICS/TECHNICIANS

The Northwest's largest Ag Dealer is looking to hire several positions! At SS Equipment, we pride ourselves in providing class products backed by the highest level of parts and service support. Qualified candidates should possess experience with farm equipment, a keen attention to detail, the ability to prioritize work, and safety-minded work habits. Openings include full-time positions with benefits in the following dealerships: WA state (Quincy, Othello, & Walla Walla); OR state (La Grande, Lakeview, Hermiston, & Albany). Paying top wages and benefits, DOE.

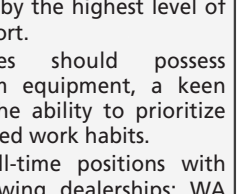
For more information, contact Ron Belt, Director of Service at (509) 851-8752 or by email at ron.belt@sseqinc.com. 43-2/#6

590 Help Wanted

FARM MANAGER: Oregon. 5+ Years Management Experience With Larger Farm. \$90,000. 308-382-7351 www.hansenagriplacement.com

FARM MECHANIC:

Full time mechanic on family owned farm. Wage based on training and experience. Benefits offered after probationary periods met. Basic knowledge of hydraulic and electrical systems, and some light welding required. Junction-City, OR. 541-954-6892



Manager 1-Farm/ Facility:

The purpose of this position is to maintain facility grounds, equipment, and buildings. This individual will support research faculty with field chemical applications, farming practices, and record keeping as well as supervise and coordinate staff schedules including temporary labor and students. Position located in Klamath Falls, OR. Job posting closes November 16th, 2015. To view the complete posting and to apply, visit: http://jobs.oregonstate.edu/aplicants/Central?quickFind=68662

Agronomist/ Field Representative:

Blue Mt. Seeds, Inc., Imbler, OR., an independent grass seed production company and retail Ag fertilizer & chemical supply company located in Union county, Northeast Oregon is seeking a qualified Agronomist/Field Representative. The ideal candidate would possess a Crop Science/ Agronomy degree, have good initiative, strong communication skills, good computer skills and be a team player that works well with customers and other employees. A successful candidate must also possess a valid Driver's License with a clean DMV record. Blue Mt. Seeds offers competitive salary, 100% paid health insurance for employee and family, and retirement benefit with 3% matching. Send resume to: bill@bluemtseeds.com

"...Sold both bulls second week. Thanks!" Tiara Farm Port Townsend, Wash. You sell too at 1-800-882-6789.

REACH YOUR AG CUSTOMERS with

- Flyers
- Mobile
- Websites
- Newspaper
- E-newsletters
- Custom Publications
- Ag Business Directory

We deliver your message to the West's Ag Audience!

Capital Press
The West's Ag Weekly

800-882-6789
or go to www.capitalpress.com

590 Help Wanted

Ranch Hand Wanted: Eastern Oregon. Call 541-493-2456

Farming Opportunity!: Recent experience with hay equipment and operation, pivot irrigation, fencing, some cattle, practical vet. House, salary, some benefits. Fort Rock, OR. 541-576-2236



Lead Farm Mechanic:

Boardman, OR. Steady year-round work. \$22- \$28/hour DOE. Family health insurance, 401k, and bonus program. Beef Northwest is an equal opportunity employer. Please apply online: www.beefnw.com

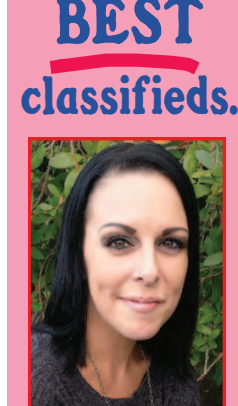
Oregon Department of Agriculture's Natural Resource Program: Area is recruiting for NRS 3 (Enforcement Case Review) in Salem, Oregon. The recruitment closes at Midnight on November 8th, 2015. For more information go to: http://www.oregon.gov/jobs/pages/index.aspx and search for Job Number AG15-0051

Oregon Department of Agriculture's Natural Resource Program Area is recruiting for NRS 3 (Pesticide Investigators) in the Salem and Eugene areas. The recruitment closes at Midnight on November 8th, 2015. For more information or to apply go to: http://www.oregon.gov/jobs/pages/index.aspx and search for Job Number AG15-0050

CONFIDENTIAL SERVICE
If you respond to a "Blind Box" ad with a dept. (box) number, but you wish to protect your identity, follow this procedure:
• Enclose your reply in an envelope.
• Address the envelope to: CONFIDENTIAL SERVICE (TSR) Capital Press P.O. Box 2048 Salem, OR 97308
• Include a note, separate from your response, listing the firms you do not want to see your letter.
• If the advertiser is one you've listed, your letter will be destroyed.
590-1-52-5/#13

660 Services

Call and list your ad in the West's BEST classifieds.



Angie Moores



Sarah Dunsworth

800-882-6789
FAX (503) 370-4383
www.capitalpress.com

DEADLINES:

Classified LINE ADS Wednesday @ Noon

Classified DISPLAY ADS Wednesday @ 10 am



870 Seed

590 Help Wanted

Herbicide Foreman/ Applicator: Hiring for a horticulture foreman/ herbicide applicator. Our company since 1993 has an amazing history of naturalization restoration projects. We need task-based passionate people for planting and herbicide application as well as great leadership. Washougal, WA. Please apply from our on-line application at www.LKECORPORATION.com and send resume to: jobs@lkecorporation.com

Oregon Department of Agriculture's Natural Resource Program: Area is recruiting for NRS 3 (Enforcement Case Review) in Salem, Oregon. The recruitment closes at Midnight on November 8th, 2015. For more information go to: http://www.oregon.gov/jobs/pages/index.aspx and search for Job Number AG15-0051

Oregon Department of Agriculture's Natural Resource Program Area is recruiting for NRS 3 (Pesticide Investigators) in the Salem and Eugene areas. The recruitment closes at Midnight on November 8th, 2015. For more information or to apply go to: http://www.oregon.gov/jobs/pages/index.aspx and search for Job Number AG15-0050

CONFIDENTIAL SERVICE
If you respond to a "Blind Box" ad with a dept. (box) number, but you wish to protect your identity, follow this procedure:
• Enclose your reply in an envelope.
• Address the envelope to: CONFIDENTIAL SERVICE (TSR) Capital Press P.O. Box 2048 Salem, OR 97308
• Include a note, separate from your response, listing the firms you do not want to see your letter.
• If the advertiser is one you've listed, your letter will be destroyed.
590-1-52-5/#13

660 Services

Businesses & Farmers: Need help with your company's payroll and quarterlies? I'd be delighted to help you out!

10 TALENTS Bookkeeping
Sarah Brubaker | Pasco, WA 509.727.4801
tentals@outlook.com

LIME & DOLOMITE
WHEN YOU'RE READY TO LIME - WE'VE GOT IT READY FOR YOU!
7 High Flotation Applicators Ready Orchard & Berry Applicators
39+ Years Experience Hauling & Spreading
Call Today for Prices & Volume Discounts.
WE'LL GET 'ER DONE!!
Marion Ag Service, Inc.
7746 St. Paul Hwy. • St. Paul, OR
1-800-648-2718
503-633-4561 or 503-678-5932
www.marionag.com
FOUR LOCATIONS THROUGHOUT THE WILLAMETTE VALLEY
• 2 Locations in St. Paul
• Broadacres • Brooks

870 Seed

590 Help Wanted

RN's Up To \$45/ Hour: LPN's up to \$37.50/ hour! CNA's up to \$22.50/ hour. Free gas, weekly pay! \$2,000 bonus! AACO Nursing Agency, Seattle, WA. 800-656-4414 x1

SEED CONDITIONING MANAGER:

We are looking for a qualified individual to oversee and operate all aspects of conditioning turf grass seed from the field to the bag. Must be able to maintain and repair equipment. This person will supervise production assistants and manage quality control. Also will lead a team of 5-20 employees in conditioning, blending, receiving, and shipping seed. Overtime and profit sharing. Fax or email. 503-982-4832 ryegrass.com@gmail.com

Turbine Pump Installer Needed: In Sunny Northern California, work 12 months a year, good pay, benefits, over time, vacation pay, super weather. New installing rigs & test engines. Valley Pump and Motor works Inc. Charlie:530-682-0671 Home:530-695-2373 Jerry: 530-682-0670

600 Jobs Wanted

ATTENTION EMPLOYERS: Well Qualified Dairy, Crops, Livestock, Agri-Business Employees. Hansen Agri-Placement. 308-382-7351 www.hansenagriplacement.com

Working Manager/ Foreman available for Cattle/ Hay Ranch: West Coast preferred. 541-654-3404

660 Services

Save This Ad: Industrial sewing service. Horse blanket wash/ repair, truck tarps, pollution cage, zippers. Kennewick, WA. 509-947-3688



All Terrain Brush Clearing: Powerful, high production, really does the job! Free Estimates. Newberg, OR, and surrounding areas. 503-789-8844

BREEDEN LOG CO.
Land Clearing, Road Constr., Ripping, Ponds, Site Prep, Utilities, Bridges
503-843-2981
503-435-7098 cell
CCB#130229, Lic, Bonded, Insured
Sheridan, OR

660-40-5-4/#7

710 Loans & Financing

FARM & COMMERCIAL: Real estate loans, 4-5% rates. Also private money. RCO, Salem, OR. 971-600-4327

740 Miscellaneous

Bio Diesel Plant: with materials to make 300 gallons of diesel, \$1,000. Kooskia, ID. 206-650-9433

NURSERY CONTAINERS: (32,000) 2 gallon, classic (600) nursery containers, on pallets, used once for blueberry production. make offer. Custer, WA. Call Mike 360-815-4836

Peppermint & Spearmint Oil: 1/2oz or 2oz bottles. Go to: amazon.com and search "Gilmour mint oil". Albany, OR.



Walk-In Coolers and Freezers: Temperature and humidity control, custom design and installation. Sandy, OR. 503-475-7046, carbontech@frontier.com

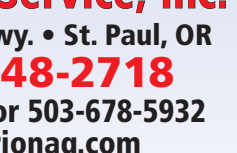
750 Fish

Oregon Aquaculture Association: Licensed Oregon Fish Producers, trout & warm water, u-catch www.oregonaquaculture.org

Rainbow Trout for Pond Stocking: Statewide delivery. Brian Trout Ranch, Sandy, OR. 503-668-7861

Rainbow Trout: Oregon and Washington delivery. Island Springs Hatchery, Portland, OR. 503-621-3565

770 Antiques & Collectibles



Pratt & Whitney Metal Lathe: Early 1900's, needs belt, almost works good. Silverton, OR. 503-991-7191

870 Seed

LAUGHLIN TRUCKING - CARLTON, OR

Hiring CDL's with 2 yrs. doubles experience to join our late model tractor/hopper fleet. We run dry bulk mainly WA, OR, ID. Most weekends off. We OFFER Med/Den/Vis, Profit Share & 401K, paid vacation, road/meal expense, and safety incentive. Total comp. \$50,000 PLUS.

Be a part of our team! Call 800-547-9754.

COMPANY TRUCK DRIVER - HAUL TRUCK

SS Equipment, the largest Ag Dealer in the Northwest is seeking an experienced truck driver to delivery ag equipment out of our Pasco store. Most deliveries are local so you will be home the same day, occasionally we have an overnight trip. The qualified candidate must have a valid driver's license and current Class A CDL. Experience preferred. Clean driving record, excellent customer service and communication skills. Paying top wages and benefits, DOE.

For more information, contact **Ron Belt, Director of Service** at (509) 851-8752 or by email at ron.belt@sseqinc.com. EOE

CALIFORNIA SUN

GROWER SERVICES

Equipment & Harvest Manager

California Sun Grower Services harvests tomatoes on over 80,000 acres and supplies tomatoes to processing facilities in Central CA. We provide custom transplanting and other farm services, and we farm our own operations and joint venture farming operations. We are seeking an Equipment & Harvest Manager to provide leadership and organizational competency for an operating unit within Cal Sun's transplanting and harvesting business in the Los Banos area. Successful candidate will have competency in large-scale agriculture mechanical harvesting, transplanting, crop production, and extensive experience in maintaining and repairing farming and harvesting equipment, and be bilingual in English and Spanish for hiring, training, and organizing personnel. This position is for a hands-on professional who enjoys working on a peer level with talented and committed colleagues. Pay expected to be \$75-100K base (DOQ). Apply online at www.morningstarco.com.

REGISTERED & CERTIFIED FALL SEED

SOFT WHITE WINTER WHEAT

- ★ BOBTAIL
- ★ GOETZE
- ★ MADSEN
- ★ MARY
- ★ XERPHA
- ★ YAMHILL
- ★ STEPHENS

TREATMENTS AVAILABLE: VITAFLO
CruiserMaxx® Vibrance™ Cereals THIRAM™

★ WINTER OATS ★ WINTER RYE ★ VETCH
★ PEAS ★ COVER CROP BLENDS

MAKE LOW RAINFALL PASTURES PROFITABLE WITH **PGGseeds**

IOKA MARKETING
BUY QUALITY SEED
CALL ROB OR LINDSAY • 503-873-6498
IOKAMARKETING.COM

770 Antiques & Collectibles

Pratt & Whitney Metal Lathe: Early 1900's, needs belt, almost works good. Silverton, OR. 503-991-7191

REGISTERED & CERTIFIED FALL SEED

SOFT WHITE WINTER WHEAT

- ★ BOBTAIL
- ★ GOETZE
- ★ MADSEN
- ★ MARY
- ★ XERPHA
- ★ YAMHILL
- ★ STEPHENS

TREATMENTS AVAILABLE: VITAFLO
CruiserMaxx® Vibrance™ Cereals THIRAM™

★ WINTER OATS ★ WINTER RYE ★ VETCH
★ PEAS ★ COVER CROP BLENDS

MAKE LOW RAINFALL PASTURES PROFITABLE WITH **PGGseeds**

IOKA MARKETING
BUY QUALITY SEED
CALL ROB OR LINDSAY • 503-873-6498
IOKAMARKETING.COM

770 Antiques & Collectibles

Pratt & Whitney Metal Lathe: Early 1900's, needs belt, almost works good. Silverton, OR. 503-991-7191