

80 Trucks

80 Trucks

80 Trucks

80 Trucks

80 Trucks

80 Trucks

80 Trucks

80 Trucks

BOLD EQUALS SOLD!

Next time you place a classified line ad in Capital Press, ask about **BOLD-ing!**

Make sure readers notice your information by **BOLD-ing** the header, specific items, and the phone number.

For just \$2 more per ad per week, this feature can pay for itself in responses.

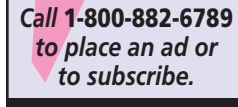
Capital Press
The West's Ag Weekly

DEADLINES:
Classified Display Ads, Weds. @ 10AM
Classified Line Ads Weds. @ Noon
1-800-882-6789
Fax 503-370-4383
www.capitalpress.com

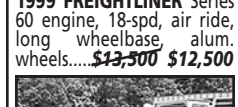


(2) 1997 INTERNATIONALS 9800 COE SLEEPER:
(2) matching trucks N-14, 13 & 10 speed, 244" wheelbase, 46lb rears, 24.5 rubber. Both trucks have 8' drom. \$10,000 each. Sumas, WA. Brandon 360-815-1497

Check our WEBSITE for ads that were "too late for press."
www.capitalpress.com
Call 1-800-882-6789 to place an ad or to subscribe.



1995 FREIGHTLINER CLASSIC FLAT-TOP: 450 CAT, 18 speed, 46lb rears, full lockers, 24.5 new rubber, 210" wheelbase, removable sleeper, \$16,000. Sumas, WA. Brandon 360-815-1497



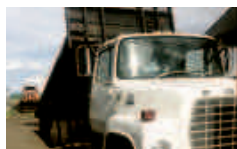
1999 FREIGHTLINER Series 60 engine, 18-spd, air ride, long wheelbase, alum. wheels. \$13,500 \$12,500



JD 762B SELF-LOADING SCRAPER Good condition, excellent tires, ready to work! \$17,500 \$16,500



1995 FREIGHTLINER CLASSIC FLAT-TOP: 450 CAT, 18 speed, 46lb rears, full lockers, 24.5 new rubber, 210" wheelbase, removable sleeper, \$16,000. Sumas, WA. Brandon 360-815-1497



1982 F600: with 1983 cab. Tag axle has an 8.2 Detroit. 23" bed with harsh twin cylinder scissor hoist. \$3,900. Turner, OR. 503-507-0359



International S1900 466DT: with Trail King TK30 tandem dual goose neck trailer. Clean, sound heavy duty hauler, \$16,000. Redmond, OR. Call for details, Tim 541-280-6075



1995 FREIGHTLINER CLASSIC FLAT-TOP: 450 CAT, 18 speed, 46lb rears, full lockers, 24.5 new rubber, 210" wheelbase, removable sleeper, \$16,000. Sumas, WA. Brandon 360-815-1497



2007 Ford F450 XL Flatbed Turbo Diesel, 105k Miles, Auto, 16'x96" Bed, Allison Auto, Series 2500 Headache Rack, Side Tool Boxes. \$21,900



2006 Int'l 4300 Dump Non-CDL, 25,999 GVW, DT466 Diesel 210hp, Allison Auto, Series 2500 trans, 254" WB. \$42,900 OBO



1999 GMC Refrigerated Box TK CAT 3126, 6-Spd., 20' Ins. Box, TK Unit. \$9,500 OBO



2005 IHC 4300 High Cube Box Non-CDL, DT466, 24'Lx102"Wx103" Inside Height. \$19,900

Medium Duty, Heavy Duty Trucks & Trailers... We Carry All Makes!
OPEN 7 DAYS A WEEK



2007 Ford F450 XL Flatbed Turbo Diesel, 105k Miles, Auto, 16'x96" Bed, Allison Auto, Series 2500 Headache Rack, Side Tool Boxes. \$21,900



2006 Int'l 4300 Dump Non-CDL, 25,999 GVW, DT466 Diesel 210hp, Allison Auto, Series 2500 trans, 254" WB. \$42,900 OBO

D&J Equipment Sales LLC
1827 West Valley Hwy. E • Sumner, WA
(253) 826-2277
EMAIL: dandjequipment@yahoo.com
www.dandjequipsales.com

capitol CHEVROLET **CHEVROLET TRUCK MONTH** **UP TO \$12,000 OFF MSRP!**

#1 VOLUME CHEVROLET DEALER IN OREGON!



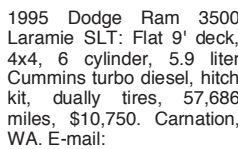
See dealership for details. Price after \$5,500 factory rebate and \$6,500 Capitol discount. Vin#551317. * Art for illustration only. Subject to prior sale. Prices do not include license fees, title fees and \$100 Doc fees. Click for details. All financing on approved credit, with Tier 1, 2 & 3 with 651 and above credit rating. All sale prices on in stock units only. Expires 9/30/15

Your Way On The Parkway! **capitol-chevy.com**

POWER
YOUR REGIONAL COMMERCIAL DEALER FOR NEW AND USED

We have New and Pre-Owned Commercial Vehicles
Cargo Vans, Service Bodies, Cube Vans, Flatbeds, Dump Beds, Specialized vehicles for custom applications and if we don't have it, we will find it for you!
Contact us today to see what we have waiting for you!
CALL JIM, PHIL OR BRANDON (855) 537-2324
POWER FLEET - COMMERCIAL
Email: fleet@powerautogroup.com • www.powerautogroup.com

Expires 9/17/2015



1995 Dodge Ram 3500 Laramie SLT: Flat 9' deck, 4x4, 6 cylinder, 5.9 liter Cummins turbo diesel, hitch kit, dually tires, 57,686 miles, \$10,750. Carnation, WA. E-mail: fullcirclefarmwa@gmail.com



1998 Dodge Ram 3500: 6 cylinder Cummins 24 valve turbo diesel, 4x4, flat 9' deck with fuel tank, generator, tow hitch, good tires 158,539 miles, \$10,250. Carnation, WA. Email: fullcirclefarmwa@gmail.com

TRUCKS, CUSTOM BEDS & TRAILERS
1994 PETERBILT 377
Cummins N14, @ 435 horsepower, 13 spd., air ride, air seat, AC, right length for 20' bed.
\$17,500 As Is
OR \$32,500 with NEW bed, hoist, 4 slip tank.
www.EconomyTruckSales.com
economytrucksales@charter.net Ph 509-525-3322
Walla Walla, WA Cell 509-200-1020

509-876-6736
gjkelly@q.com
KELLEY Equipment Company
1998 Pete, cat power, #5226
1994 PETE, 3 axle w/ drop axle, cat power call for info #4058
1997 FORD, lots of extras, walking beam susp, #4092
1999 PETE 330, cat power, walking beam susp TOO MUCH EQUIPMENT TO LIST! #3768
INTL "virgin tires on front, new recaps on drivers"....ready to go!CALL #2617
All Trucks serviced and through the shop, oil and filters have been changed, all batteries have been replaced as needed

WANTED
"Fairly Honest Neil"
I BUY TRUCKS
Specializing In Running or NOT In The Pacific Northwest
503-521-6935
HAGERMAN INC
7100 N.E. Columbia Blvd
Portland, OR 97218
neil@hagermanparts.com

T800 KENWORTH CHASSIS



4-axle trucks, Cummins engines, 18-spd. trans. (RTLO18918B), single spd. Eaton rear-ends (DS462P), 4:11 gears w/locker, Hendrickson Haul-Max walking beam susp., 250" WB

- 10 Trucks To Choose From Starting At \$50,000**
- #072 R855045, 2000, Cummins N-14, 460hp.....\$50,000
 - #134 R897701, 2002, Cummins ISX, 475hp.....\$50,000
 - #003 R391639, 2003, Cummins ISX, 475hp.....\$51,000
 - #071 R855047, 2000, Cummins N-14, 525hp.....\$51,500
 - #133 R892653, 2002, Cummins ISX, 475hp.....\$52,000
 - #131 R892652, 2002, Cummins ISX, 475hp.....\$52,000
 - #95 R054032, 2004, Cummins ISX, 475hp.....\$52,000
 - #097 R057135, 2004, Cummins ISX, 475hp.....\$53,000
 - #119 R897700, 2002, Cummins ISX, 475hp.....\$53,000
 - #011 R118640, 2006, Cummins ISX, 475hp.....\$59,000

CLEAN AND IN EXCELLENT SHAPE!
MAINTENANCE RECORDS - REGULAR OIL SAMPLES
Thomas H. IRELAND INCORPORATED
Call Chuck Ireland (O) 541-863-5241 (C) 541-863-1500 Myrtle Creek, OR

PAPÉ PAPÉ KENWORTH

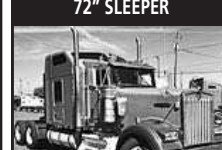
EUGENE: 1-800-344-1191
PORTLAND: 1-800-344-6282
MEDFORD: 1-800-344-5211
www.papekenworth.com



2004 KW T600, 475 hp CAT C15, 13-spd, 72" raised roof slip, 235" WB... \$32,000 \$25,000



1991 KW T800, Cummins N14, 435 hp, 226" WB, 13-spd., DT402P rear... \$26,000



2004 KW W900, CAT C15, 18-spd., 475 hp., 260" WB, 3:55 ratio.....\$39,000



2000 F/L, 48" sleeper, 500 hp Detroit, 2-spd. 46K rear axle, 18-spd..... \$48,500 \$17,500



2004 KW T300, Cummins, 260hp, automatic trans., 140,000 miles..... \$35,900



2006 KW T800, Cummins ISX, 10-spd. auto shift, 475 hp, 247" WB, 4:10 ratio... \$42,000

NEWBERG Ford
GUARANTEED BEST SERVICE & PRICING IN THE PACIFIC NW
Call 503-312-4006

2015 F-250 SuperCab 8 ft Bed
MSRP \$31,469
2015 F-350 4x4 Service Body
MSRP \$54,469
2015 F-150 SuperCab 4x4
MSRP \$33,719
2015 F-550 4x4 11' Service Body
MSRP \$59,469
2015 F-550 Crew Cab 4x4 12' Flatbed
MSRP \$59,469
2015 F-350 4x4 8-Foot Service Body
MSRP \$47,469
2015 F-550 Crew Cab 4x4 Service Truck
MSRP \$65,469
2015 F-450 4x4 12' Dump
MSRP \$59,469
2016 F-350 165" WB Chassis Cab
MSRP \$42,469
2015 Ford F-350 4x4
MSRP \$42,469
2016 F-350 12' Aluminum Deck Flatbed
MSRP \$42,469
2016 E-350 15' Box Van | 12,500 GVW
MSRP \$29,469
2015 E-350 KUV Service Van
MSRP \$29,469

Dale E. Sykes
Commercial Sales Manager
Available 24/7 at 503-312-4006
dale@newbergford.com

visit **newbergfordfleet.com**
503-312-4006 3900 Portland Rd. (39W)