

20 ATV's, Motorcycles

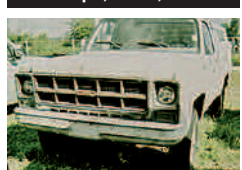
2008 Polaris Side-by-Side 700: 4x4, with freedom cab, \$7,500 OBO. Appleton, WA. 541-993-0359

Honda 4-wheeler, including small sprayer, \$2,800. Dayton, OR. 971-241-3788

Kawasaki Mule: Diesel, 4x4, power dump, \$4,500. Salem, OR. 503-581-3052

Quiet KAT: Electric, portable all terrain vehicle NEW. \$3,750. Spray, OR. 541-468-3133

60 Pickups, Vans, SUVs



1979 GMC 2500 4X4: 4-speed, 350 V8, new paint/canopy, 60,000 actual miles, \$4,700. Auburn, WA. 605-216-8359

60 Pickups, Vans, SUVs

#1 Pickups: Used Power Stroke & Dodge Diesel 4x4, call about great tax advantages! Wallowa, OR. 541-569-2352

1987 Ford E350 School Bus: 120K, runs/ drives great, new brakes, (15) passenger, \$3,000. Troutdale, OR. 503-348-5902

2003 Ford 350 XLT: 4x4, 7.3 diesel, Super Cab, utility bed, auto, very nice, \$12,500. Salem, OR. 503-362-3055

2005 Ford F350 King Ranch: diesel, 4 door, 4x4, long box, loaded, \$19,999. Lyle, WA. 509-767-1539

2011 Dodge 3500 RAM Pickup: 4WD, all options, gooseneck hitch. Hillsboro, OR. 503-939-9241

80 Trucks

capitol CHEVROLET

CHEVY BONUS TAG

UP TO \$10,000 OFF MSRP!

ON NEW 2015 SILVERADOS

#1 VOLUME CHEVROLET DEALER IN OREGON!

Your Way On The Parkway!

capitol-chevy.com

80-27-5-4/17

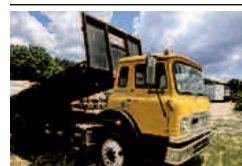


1956 Ford F6: Custom cab, flatbed dump, good condition, \$3,000. Cle-Elum, WA. 509-728-1316

1964 Ford F-600 Dump Truck: \$1,500. Pictures available. Port Orchard, WA. For details call 360-710-6147

80 Trucks

1973 INTERNATIONAL 4300 TRUCK: 4300 truck with 20' bed, grain racks, pintle hitch, all aluminum wheels, 400 Cummins. Genesee, ID. 208-285-1657



1975 International Cargo Star: V-8, gas, 16' hydraulic flatbed dump, 5 speed. Runs great, \$3,750. Lower-Lake, CA. 707-994-5100

1977 International: 20' steel bed, 20,000 miles on engine and clutch, 10 speed transmission, \$2,600 OBO. Aumsville, OR. 503-871-9715

80 Trucks

1976 Chevy: 2 ton, with 16' flatbed dump, \$3,500. Olympia, WA. 360-561-6759

1983 PETERBILT CABOVER: 181k original miles, truck/trailer, Big Cam 350, 13 speed, includes a 32', 3-axle pull trailer, 60' deck space, \$12,000. Sandy, OR. 503-668-8849



1989 Peterbilt 379: 3406, 18 speed, air track, quick change, 3/8 frame, \$35,000 firm. Goldendale, WA. 509-773-5651

CLASS 8 TRUCKS

509-534-9088 • SPOKANE, WA

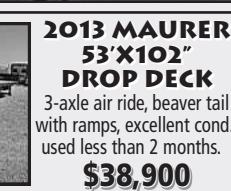
Answering machine after hours

NICE SELECTION OF FLATBEDS, REFERS, INSULATED STORAGE

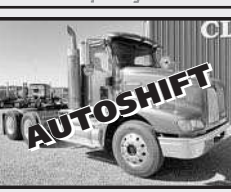
93 KW T800
12.7 Detroit 605, 450 HP, 9-spd, 4:11, 188" WB, air susp, clean.
\$24,500



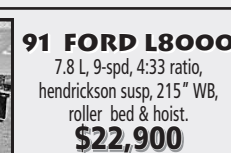
2013 MAURER 53'X102" DROP DECK
3-axle air ride, beaver tail with ramps, excellent cond., used less than 2 months.
\$38,900



2001 IH 9200
Low Miles, C12 CAT, 430 hp, autoshift, OD, Jake, Air Ride, 4:11 ratio, 11R22.5, Alum/Steel wheels, 173" WB.
\$29,900



CLASS 8 TRUCKS
91 FORD L8000
7.8 L, 9-spd, 4:33 ratio, hendrickson susp, 215" WB, roller bed & hoist.
\$22,900



2014 MAURER 36' AG HOPPER
Spring susp., roll tarp, platforms and ladders.
\$31,500
FET Paid



NEW & USED GRAIN TRAILERS
Call for pricing & availability.
GRAIN TRAILERS FOR RENT
Available in 24', 38', 40' & 42'
Pay this year for your trailer rental! Apply it to a purchase!

TO DO LIST:

Don't forget to call Capital Press at 1-800-882-6789 before 10 AM on Wednesday, to place your ad.

OTC Oregon Truck Center

6505 NE Columbia Blvd
Portland, Oregon
(503) 288-1118
www.oregontruckcenterinc.com

2007 Isuzu FVR Box Truck, Isuzu 6 cylinder turbo diesel, 6 spd., 19K-RA, 10K-FA, 140" WB, 14'x96" aluminum dry box w/aluminum walk ramp, Stk#5474.....\$24,750

(7.5 Avail.) 2005-2007 International 8600 single axle day cab tractors, Cummins ISM-330, some with and without Jakes, 10-spd., air ride, 12K FA, 21K RA, 204K-359K miles.

1988 International Box Truck, Cummins L10, 7 spd, 22K-RA, 10K-FA, 228" WB, e-track, TUCK-AWAY lift gate. Stk#5606

2005 Isuzu NPR 16' Reefer, 4 cylinder turbo diesel, automatic w/OD, 16'x96" reefer body, ThermoKing reefer unit w/6282 reefer hours, roll-up rear door, aluminum floor, aluminum walk ramp. Stk#5577...CALL

1995 International 4900 20' Dump Flatbed, International DT466/210 HP, 6 Spd., 21K RA, 12K FA, 254" WB, 292,460 miles, Stk# 5524.....CALL

2007 Freightliner M2-106, single axle tractor, Cat C-7/300 hp, 9 spd., 12K-FA, 21K-RA, 150" WB, 143,884 miles, dual 50 gal. tanks. Stk#5578.

RDS AUTOMATIC

2001 International 4900 Cab & Chassis, DT466E/195 hp., 6 spd., 8K FA, 17,500# RA, 4:10 ratio, 272" WB, cruise, PS, A/C, hydraulic brakes, dual 50 gal tanks, Stk#5457. \$11,950 **\$10,950**

1996 Volvo WG64T 3 Axle Day Cab Tractor, Cummins N14Plus/350hp, 10 spd, 40K-RA, 13K-FA, 171" WB, Jake brake, Stock #5605.

WW TRAILERS INC.

5000 NE Columbia Blvd., Portland, OR 97218
(503) 821-6000
www.wwtrailers.us

(12) 2000 Wilson 48'x102" spread axle, CA legal with rolling curtain top, F-3370....CALL

1991 Trail King 40-ton, 2-axle mechanical removable double drop, L-3308.....CALL

1992 Ravens 48' spread axle all aluminum flatbed, F-3290.....CALL

33' Peerless spread axle pull trailer with turntable and long draw bar, F-2895.....\$4,950

509-876-6736 gjkelley@q.com

KELLEY Equipment Company

1999 Pete with 3800 gal tank...Cat pwr, virgin rubber on front, new recaps on driver, ..take it away

Cat Pwr...serv truck / crane... brand new virgin Bridgestone radials on all wheels, Put your tools on it!

Mack Water truck 4000 gallon

Mack water truck 4000 gallon

Pete water truck. Just off the job

INTL, 3406 pwr, "virgin tires on front, new recaps on drivers"...ready to go!

All Trucks serviced and through the shop, oil and filters have been changed, all batteries have been replaced as needed

BE BOLD

Give your classified line ads extra punch when you **BOLD** pertinent copy like the header, outstanding items and the phone number.

For just \$2 more per week per ad, **BOLD**-ing specific copy insures the reader notices the most important part of your ad.

DEADLINES:
Classified Display Ads, Weds. @ 10AM
Classified Line Ads Weds. @ Noon

1-800-882-6789
Fax 503-370-4383
www.capitalpress.com
Capital Press
Customs Ag Weekly

Capital Press
The West's Ag Weekly

twitter.com/capitalpress

R.B. BROWNS TRUCKING

1994 KENWORTH T400 SERVICE TRUCK
Cummins 8.3, T8607B trans., 12#FA and 21#RA 3:70 ratio, Air ride suspension. Truck rated at 26,000 GVWR. 534,000 miles. Liftmoore 3200 electric hoist with remote control. Miller welder, air comp, hose reels and 2 tanks.....\$25,000

2008 PETERBILT 389
ISX 550 CUMMINS, CARB COMPLIANT, RTLO18913 TRANS., DSP40 3.36 ratio, FLEX AIR susp., 250" WB, 63" hi-roof sleeper power windows, mirrors and door locks. 922,000 total miles. Has approx. 65,000 miles left on NOW 3 Cummins warranty. LP22.5 on alum. Stk# RB14.....\$65,900

5758 Crater Lake Ave. • Central Point, OR
Contact Ron Weathers
541-601-0635 or 541-826-2418
rweathers@rbbrowns.com

Grovers All Wheels, LLC

2003 GMC C8500
C7 CAT, 300 hp, 8LL Transmission, Hendrickson Walking Beam Suspension, 4.11 Ratio, 46K GVW, New 20'x102" Parkhurst Grain Bed, 52" Removable Stake Sides, Full Dump Rear Gate w/ Center Grain Door, Workman Double Ram Scissor Hoist.....\$57,900

2007 Peterbilt 385
ISM Cummins, 305 hp, 10 Speed Transmission, Reyco 4-Spring Suspension, 4:88 ratio, 52K GVW, New 20'x102" Parkhurst Grain Bed, 52" Removable Stake Sides, Full Dump Rear Gate w/ Center Grain Door, Workman 25 Ton Bould Ram Scissor Hoist, Dual 70 Gallon Aluminum Fuel Tanks, Aluminum Wheels.....\$57,900

1998 Peterbilt 385
C10 CAT, 350 HP, 8LL Transmission, Hendrickson Walking Beam Suspension, 4.11 Ratio, Engine Brake, 52K GVW, 156" CT, 110 Gallon Aluminum Fuel Tank, Pintle Hitch w/Air & Electric, Ready for a 20' Bed.....\$29,900

2011 Peterbilt 337
PX* PacCar, 260 hp, 3500RDS Allison Automatic, Hendrickson Haulmax Suspension, 52K GVW, 168" CT - Ready for a 22' Bed, 90 Gallon Aluminum Fuel Tank, 6:14 Ratio, Outside Aluminum Wheels, DEF.....\$62,900

2006 Sterling Acterra
C7 CAT, 250 HP, MT653 Allison Automatic, Hendrickson Walking Beam Suspension, 4.33 Ratio, 156 CT - Ready for a 20' Bed, 52K GVW, Double Framed, 80 Gallon Aluminum Fuel Tank, Lease Maintained.....\$45,900

2007 Kenworth T300
C7 CAT, 250 HP, 3500RDS Allison Automatic, Hendrickson Walking Beam Suspension, 6.17 Ratio Rockwell 40145 Rears, 3/4 Locking Rears, Ready for a 20' Bed - 156" CT, 52K GVW, 100 Gallon Aluminum Fuel Tank, Low Miles.\$59,900

4140 E. 645 N., RIGBY, ID 83442
1 (800) 625-7077 • Office (208) 745-7077
Fax (208) 745-7075 • Mobile (208) 351-1352
www.groversallwheels.com

Get up. Drink up. The week is waiting.



Capital Press
The West's Ag Weekly

- Print
- Online
- Mobile
- Facebook
- Twitter

800-882-6789
www.capitalpress.com