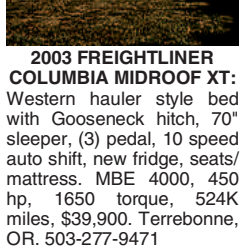


80 Trucks
1977 International: 20' steel bed, 20,000 miles on engine and clutch, 10 speed transmission, \$2,600 OBO. Aumsville, OR. 503-871-9715



1994 Ford Truck: 2 ton, Cummings motor, 98k miles, 20' bed new host, \$10,500. Albany, OR. Lee 541-974-0825

80 Trucks
2003 FREIGHTLINER COLUMBIA MIDROOF XT: Western hauler style bed with Gooseneck hitch, 70" sleeper, (3) pedal, 10 speed auto shift, new fridge, seats/mattress. MBE 4000, 450 hp, 1650 torque, 524k miles, \$39,900. Terrebonne, OR. 503-277-9471

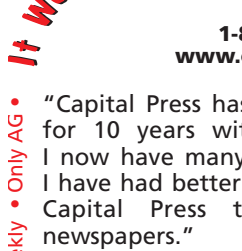


80 Trucks
1983 PETERBILT CABOVER: 181k original miles, truck/trailer, Big Cam 350, 13 speed, includes a 32', 3-axle pull trailer, 16' deck space, \$12,000. Sandy, OR. 503-668-8849



2005 Freightliner: Auto shift, 10 speed, 875k miles, new tires, Clean, \$14,000. Albany, OR. Lee 541-974-0825

80 Trucks
1988 Ford F600 16' Flatbed Dump: excellent landscape/wheat hauler. Too many new parts to list. Can send pictures, \$5,250. Call Don for details. Aloha, OR. 503-709-4714



ATTACK TENDER IHC4200 HD: Specs low miles 16' flatbed dump, slip on 3500 gallon baffled tank, hitch with trailer hookup, self-drafting, cab controlled rear spray, exceeds forest service specs, \$26,000. Dump box available. Mt. Vernon, WA. 360-391-9695

80 Trucks
2000 Peterbilt 379: Detroit, 470 HP, 13-speed, 42" maintained 971214, \$28,500 OBO. Summerlake, OR. 541-943-3192



WANTED: Nice, older Peterbilt or Kenworth. Extended hood, 3-axle. Shelbyville, IL. 217-273-911, Dave.

80 Trucks
WANTED: Nice, older Peterbilt or Kenworth. Extended hood, 3-axle. Shelbyville, IL. 217-273-911, Dave.



WANTED Chevy 292 Truck Engine: inline 6 cylinder. Auburn, WA. 253-217-2956

80 Trucks
WANTED: Nice, older Peterbilt or Kenworth. Extended hood, 3-axle. Shelbyville, IL. 217-273-911, Dave.



WANTED Chevy 292 Truck Engine: inline 6 cylinder. Auburn, WA. 253-217-2956

100 Truck & Pickup Parts
FLATBEDS
Complete, installed, wired & ready to work!
541-447-4555
PRO-LINE
FABRICATION
Prineville, OR 97618



WANTED Chevy 292 Truck Engine: inline 6 cylinder. Auburn, WA. 253-217-2956

RAMPS
Snowmobile & ATV Ramps
Exclusively at DieselWerx

Flatbeds • Bumpers • Tool Boxes
• Hillsboro • Bradford
• Thunderstruck • Timbersled Mtn
Horse Snow Bike Kits
WE ARE THE ORIGINAL
DIESELWERX.COM
THE PERFORMANCE PRODUCTS AND ACCESSORIES
Contact Brett
509-201-0707
Authorized Dealer • Made in the USA
Photo Gallery on f

chamberstrucks.com
OVER 150 UNITS TO CHOOSE FROM



2000 E-450 Shuttle Bus. 10 Pax + 2 Wheel Chairs.....\$7,500



2000 Ford F-450 Utility 9' Box . 6.8L V-10 & A/T.....\$6,500



2002 GMC 15-1/2' Flatbed. Wood Deck. 8.1L V-8 Gas & A/T.....\$9,500



1984 GMC Topkick. 3208 Cat & 10-Spd.....\$5,900



2005 Ford F-350 Extra-cab. 6.8L V-10 & A/T.....\$7,900



2004 Ford F-350 4x4 Utility. 5.4L V-8 & A/T.....\$8,900



2006 International 4300 Box Truck. 24' with Ramp. DT-466 & A/T.....\$19,500

Salesman - Mechanically Inclined. Trucks & Equipment. Non-Smoking Environment. Mechanic's Helper. Recent H.S. Graduate O.K. Call John Chambers 503-887-0070.

CHAMBERS MOTOR CO.
(503) 663-7200
30357 SE Hwy 212 • Boring, OR

LOVELL Truck Sales SINCE 1967



(4) 2006 3-Axle Day Cabs Sterlings, Series 60 14L, 515 HP, 10 spd., air ride, PS, AC, cruise control, engine brakes, very low miles, all Freightliner components.....Starting at \$26,500
ALSO, 2007 with Same Specs.....\$28,500



1993 Peterbilt 379 EXH 3406B Cat 13 speed, Jake, PS, Long WB.....\$19,500



2007 Freightliner CL-12064ST Daycabs 14L 515hp, 10 spd, 487k-530k.....Starting at \$36,500



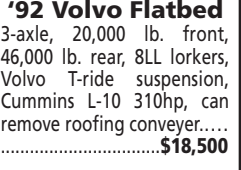
'92 Volvo Flatbed 3-axle, 20,000 lb. front, 46,000 lb. rear, 8LL lorkers, Volvo T-ride suspension, Cummins L-10 310hp, can remove roofing conveyer.....\$18,500



2006 Kenworth W-900 CAT C-15, 18 speed, 46,000 lb. rear axle, engine brake, 11R 24.5, PS, AC, cruise control, good dyno from CAT.....\$46,500



2006 Freightliner CL-12064ST Series 60 14L, 10 spd, air ride, PS, AC, CC, engine brake, 171" WB.....\$29,500



2005 Kenworth W-900 Long hood, Cummins 500hp, 13 speed, PS, AC, cruise control, engine brake, 60" sleeper.....\$38,500

COMING IN THIS WEEK!
7 - '07 Freightliner Day Cabs, Series 60 14L Detroit, 10 speed, Jakes
2000 Freightliner Day Cab Cummins 9 spd., PS, Single Axle. Runs good.....\$5,000
2003 GMC CAT C-7, Allison, A/T, PS, AC, very clean....\$15,500

1-800-451-0012
680 SW 1st (Hwy 99 East) Canby, OR
(503) 266-5886 • FAX (503) 266-6903
LOVELLTRUCKSALES.COM

dorngooddeals.com
REPURPOSED GOVERNMENT SURPLUS



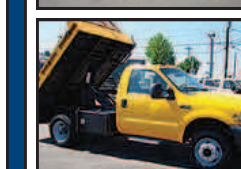
1987 Ford F350 4x4 XL Stk#T050234 \$4,795



1998 Chevrolet K3500 4x4 Covered Utility Stk#T050239 \$9,995



1991 Chevrolet 3500 4x4 Fire Truck 200 Gallons. Stk#T060242 \$6,995



2002 Ford Superduty F-450 DRW XL Stk#T040227 \$11,995



1994 Chevrolet U/K 2500 Series LS Stk#T050235 \$5,995



2005 C/K 3500 Series Crew Cab Stk#T040222 \$19,995



1998 Chevrolet 3500 HD Utility Truck Stk#HT12D175 \$10,495



2007 Chevrolet 4x5 Dump 21K Actual miles. Stk#PB T1220181 \$22,995



2001 Dodge 3500 4x4 Stk#T050257 \$14,995

More DORN GOOD DEALS Today!
1998 Ford E450 Shuttle Bus, 7.3 diesel, auto, air, wheelchair lift, 10 passenger w/room for more, 192K actual miles. Stk#T120168.....\$11,857
2001 Ford F450 4x4 C&C, 6.8 V10, auto, air, 39K miles.....\$16,995
2008 Chev Crew Cab 4x4 V8, Auto, air, tilt, cruise, pwr windows & locks. 213K miles.....\$12,750
1995 Freightliner FL70 21' Reefer Van, New transmission.....\$16,995

TRADES OK • WE BUY DORN BROS. TRUCK SALES, Inc. SINCE 1947 3130 PORTLAND RD. • SALEM, OR (503) 585-4731

SUBURBAN CHEVROLET
36936 Hwy 26 Sandy, OR 97055



2015 3500 4x4 with 12' Flatbed
Vortec 6.0L gas, 6 spd. auto., 13,200 GVWR, hitch, snow plow prep package
Stock# T15822 MSRP \$44,000
\$38,467*
*after rebates



2015 2500 4x4 Double Cab with Service Body
6.0 V8, PW & PL, power mirrors, rack
Stock# T15626 MSRP \$48,991
\$42,799*
*after rebates



2015 1-ton Express with KUV Body
6.0 V8, PW, Power locks, cruise
Stock# T15620 MSRP \$43,664
\$38,499*
*after rebates



If you have a GM Fleet number, additional rebates may apply.

Call Fleet Mgr. **DJ Anderson** (503) 454-4960 fax: (503) 668-4359 email: dj@suburbanautogroup.com www.suburbanchevrolet.com



We Are The Best Darn Diesel Shop In Oregon!
COME IN AND SEE WHY!

And We Absolutely, Positively Have The Best Remanufactured Engines Available Anywhere! Huge Inventory • Expert Technical Assistance

100,000 mile warranty when we install, depending on application.		REBUILT DIESEL ENGINES	
ALL ENGINES & CYLINDER HEADS EXCHANGE MUST BE RE-BUILDABLE CORE			
SPECIALS! Incidentals Extra			
GM 6.2-6.5 TURBO Engine, installed.....	\$6,695	CAT	FORD
Ford 6.0 Powerstroke Engine, installed.....	\$9,500	C-7.....	6.0 P/S.....
Ford '94-'03 7.3 Powerstroke Engine, installed.....	\$7,600	3204.....	6.4 P/S.....
Cummins '99-'02 5.9 Engine, installed.....	\$7,500	3208.....	6.9 - 7.3.....
Cummins '03 & up, 5.9 C/R Engine, installed.....	\$9,450	3304.....	7.3 P/S.....
NEW & REBUILT INJECTORS: Injection pumps, Turbos & Upgrade Performance Parts		3306.....	GM
Ford 6.0 L P/S Injector.....	\$229.50 ea exch		6.2/6.5T.....
Ford 7.3L P/S Injector.....	\$194.95 ea exch		6.6 Duramax.....
Dodge 5.9 L C/R, '03-'08 Injector.....	\$269.95 ea exch		7.3 P/S.....
			IH NAVISTAR
			DT360-530.....
			OVER 100 GAS ENGINES AVAILABLE

Problem with your Diesel Not Running Well, Bad Fuel Economy, or Not Running at ALL? GIVE US A CALL, WE CAN FIX IT!

CALL FOR APPLICATION NOT SHOWN FOR PRICE AND AVAILABILITY! ASE CERTIFIED AND IN BUSINESS SINCE 1975. OVER 250 ENGINES AND 450 CYLINDER HEADS IN STOCK!

R & G MACHINING AND ENGINE PARTS
ALL MAKES AND MODELS - FOREIGN AND DOMESTIC AGRICULTURAL, INDUSTRIAL MARINE AND MOTOR HOMES
GRUMPY'S DIESELS AND TRUCK REPAIR
WE WORK ON TRUCKS, TRACTORS AND LOADERS
MULINO, OREGON: 800-823-6038 SHOP: 503-829-6038

130 Tires, Wheels 130 Tires, Wheels 130 Tires, Wheels

LES SCHWAB
24-HOUR
GROWING WITH FARMERS & RANCHERS FOR OVER 65 YEARS!
FARM TIRES • TRACKS • ATV TIRES

YIELD MASTER
TRACKS BUILT FOR LES SCHWAB COUNTRY
WE ALSO CARRY RUBBER TRACKS FOR MINI-EXCAVATORS & SKID STEER MACHINES

BIO TIRE BALLAST
+ READY-TO-USE LIQUID
+ FRONT- & BIODEGRADABLE
+ SAFE TO USE
+ BETTER STABILITY
+ PATENTED & OSHA APPROVED
+ NON-FLAMMABLE

TRACTOR & AG BATTERIES
We carry batteries for all your agriculture needs.