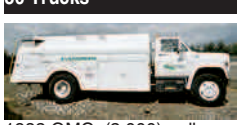


**80 Trucks**



1982 GMC: (2,000) gallon fuel tank. Fully functional, 48,000 miles. \$4,500. McMinnville, OR. 503-550-7625

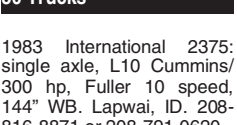


1984 Peterbilt 3406B: 13-speed, air trac suspension, A/C, 1989 Miller log gear with new electric scales, quick change to 5th wheel, wet kit setup for end dump or dump box \$24,500 OBO. McArthur, CA. 530-515-8396, Tom.



1995 Kenworth T800B: 3406E CAT engine, 550 HP, 18-speed, 46K rear, AirRide suspension. P.O.R. Hayden, ID. 208-755-0685

**80 Trucks**



1983 International 2375: single axle, L10 Cummins/300 hp, Fuller 10 speed, 144" WB. Lapwai, ID. 208-816-8871 or 208-791-0620

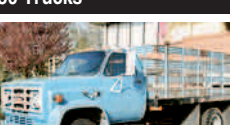


1990 Pete 362 CAT Flatbed Truck and Pull Trailer: \$20,000. Portland, OR. 503-805-6521 or 503-709-2508

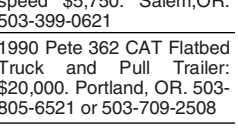


2000 Peterbilt 379: Detroit, 470 HP, 13-speed, 42" sleeper. Lightly used, well maintained 971214. \$35,000 OBO. Summerlake, OR. 541-943-3192

**80 Trucks**



1987 GMC: 57k miles, 14" flatbed, p/gate, 366 V8, 4/2 speed \$5,750. Salem, OR. 503-399-0621

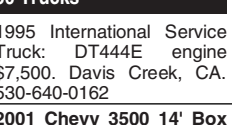


2001 Chevy 3500 14' Box Van: Walco lift gate \$9,700. 2013 Isuzu NQR 16' Box: 6' aluminum lift gate, 20k miles \$53,000. Woodburn, OR. 503-881-5303



2001 Freightliner Century C-120: Sleeper cab, 243" wheel base, tandem axle, 10 speed, automated manual, 861k miles \$7,000. Othello, WA. 509-488-7664

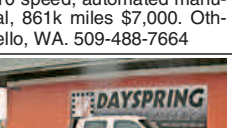
**80 Trucks**



1995 International Service Truck: DT444E engine \$7,500. Davis Creek, CA. 530-640-0162

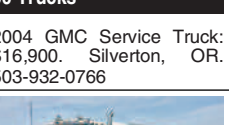


2006 Ford F350: crew cab, 4x4, flatbed, new tires, runs great! Stock #p-3082. \$14,988. Dayspring Auto & Trailers, Gresham, OR. 503-666-7300

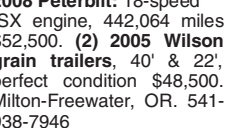


2014 Peterbilt 386: 550 Cummins, 18 speed, 263 wheelbase, 48" sleeper, factory lift axle, Canadian spread, new steer tires, all aluminum wheels, wet kit, tool boxes. Ready to go, like new, 85k miles. New price: \$164,000. Buy for \$125,000. Pasco, WA. 509-531-5201

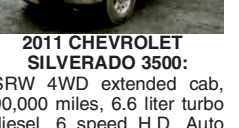
**80 Trucks**



2004 GMC Service Truck: \$16,900. Silverton, OR. 503-932-0766



2008 Peterbilt: 18-speed ISX engine, 442,064 miles \$52,500. (2) 2005 Wilson grain trailers, 40' & 22', perfect condition \$48,500. Milton-Freewater, OR. 541-938-7946



2011 CHEVROLET SILVERADO 3500: SRW 4WD extended cab, 90,000 miles, 6.6 liter turbo diesel, 6 speed H.D. Auto transmission, remote key-less entry, power heated bucket seats/ leather. Bose premium speaker system, OnStar, Sirius, camper/ 5" wheel trailer wiring. 6" tubular chromed assist steps, spray in bed liner. Serviced regularly, has not been used for towing \$31,500. Harrisburg, OR. For more information 541-995-6836

**100 Truck & Pickup Parts**

Flatbed Bed: 7 1/2' Wide x 12' long, 14" sides. Flatbed: 6 1/2' wide x 9' long, needs minor repair. Turner, OR. 503-743-2181

**100 Truck & Pickup Parts**

Freightliner and Kenworth Fuel Tanks: multiple sizes. Turner, OR. 503-743-2181

**100 Truck & Pickup Parts**

Lift Axle: (20,000lb), non-steerable. Stud pilot hubs, was on truck with 34" to outside of frame rails \$1,750. Lebanon, OR. 541-990-2451

**CLEAN TRUCKS!**

**FARM TRUCK**      **HEAVY HAULER**

**2000 Pete 379**  
C12, 13 spd., 40k# R/A, 12k# F/A, rubber 95%. **NICE TRUCK!** \$33,500

**2001 Peterbilt 379**  
46k# R/A, w/locker, 17,500# D/A, 20k# F/A, 18 spd., C15, double frame, Canadian spread, heavy hauler, rubber 95%. **SUPER CLEAN TRUCK!** \$64,000

**208-553-7201**  
TOUCHET, WA

**capitol CHEVROLET**

**#1 VOLUME CHEVROLET DEALER IN OREGON!**

**NEW 2015 SILVERADO 1500'S STARTING AT \$21,999**

Price after \$5,831 Capitol discount. See dealer for details. Examp Vin# E3345467. MSRP \$27,830.

**TRUCK MONTH**

Capitol Chevy.com

**The Truck Shop**  
1702 E. St. NE  
Auburn, WA 98002  
253-852-3827

**2005 Mitsubishi Fuso FE145 Dry Van**  
4m50, diesel, Aisin 6-speed OD AT, 5360 FA, 9880 RA, 5.285 ratio, 134.3 wheel base, 222,464 miles. Stk#CP7871  
**\$14,895 plus TTL**

**www.thetruckshop.net**

**Portland Mitsubishi-Fuso**  
9777 NE Vancouver Way  
Portland, OR 97211  
503-467-4040

**1979 GMC Sierra 6000 Flatbed Dump Truck**  
V8, 366hp, 5 spd. manual, gas, 5000 b. FA, 15,000 lb. RA, 56,058 miles. Stk#CP0699  
**\$6,995 plus TTL**

**LOVELL Truck Sales** SINCE 1967

**8 - 2006 3-Axle Day Cabs**  
Sterlings, Series 60 14L, 515 HP, 10 spd., air ride, PS, AC, cruise control, engine brakes, very low miles, all Freightliner components. Starting at **\$26,500**. Also Same Specs 2007. **\$28,500**

**1999 Freightliner FLD-12064ST Series 60**  
12.7, 10 speed, fresh transmission and clutch, front rearend, Call for more details. **\$12,500**

**2006 Kenworth W-900**  
CAT C-15, 18 speed, 46,000 lb. rear axle, engine brake, 11R 24.5, PS, AC, cruise control, good dyno from CAT. **\$46,500**

**2007 International 4300 24' Reefer**  
DT-466, automatic transmission, PS, AC, cruise control, Thermo King. **\$19,500**

**1992 Freightliner FLD-112042ST**  
Cummins 9 spd., PS, Single Axle. Runs good. **\$5,000**

**1995 Freightliner FLD-12064SD**  
Day Cab, Cummins N14 500 HP, 18 spd. Jake, 46,000# rear, 4:33 ratio, 20,000# front, 221" WB, very clean truck. **\$28,500**

**2007 Freightliner Business class, MBE900, 280 hp, Allison auto, air ride, 147" WB, PS, AC, CC, engine brake, 181K miles, very clean** **\$22,500**

**2007 International 4300**  
DT-466, 245 hp, Allison auto, 236" WB, 178K miles, 20x102 cold plate reefer, lift gate, very clean. **\$29,500**

**2008 Freightliner M2**  
Tandem axle, Cummins ISC, 300 hp, spring suspension, 9 spd., PS, AC, cruise control, 24" van box, flatbed options, low miles **\$44,500**

**1999 Freightliner FLD-12064ST Series 60**  
12.7 10 speed, 179" WB, DS404, 3:90, Jake, PS, AC, cruise control, air slide 5th wheel. **\$14,500**

**(10) 2007 International 4300**  
DT-466, 210, 6 spd, 4.11 ratio, 205" WB, 18' Box. Starting at **\$17,500**

**NEED MONEY?**  
Custom Financing Options Tailored to Your Business  
See Our Ad in Class 710  
Call or Apply Online Today  
www.fulcirclellc.us  
1-888-223-2600 Craig LeSesne

**WANTED**  
Cash for your used Commercial Trucks or Vans. Please call for an appraisal.  
**503-769-7100**  
Ask for Jim or Phil  
@ Power Fleet Sales

**1987 INTERNATIONAL DUMP TRUCK**  
3406B CAT, 13-spd., 2-sp. rear ends on RTE suspension, 15' box. Good condition. **\$24,500**

**1993 PEERLESS SHORT LOG TRAILER**  
8'6" bunk. **\$10,500**  
**541-928-5244**  
Tangent, OR

**Fuel Trucks & Trailers:**  
(7) 1977-1987 fuel trucks. Ready to work, priced from \$5,500-\$11,500 FOB. Vancouver, WA. 800-443-8476. [www.oppmansales.com](#)

Pauls 4000 Gallon Tank & System: Like new, hydraulic driven pump, cab controls, spray bars \$22,000 OBO. Lyle, WA. 503-318-9654

**Farm Trucks For Sale:** 1990 International 10 wheeler with drop axle and 20' Logan self-unloading spud box \$12,500. 1989 Freightliner 10 wheeler with drop axle and 20' self-unloading spud box \$12,500. 1980 Ford 10 wheeler with 20' Lockwood self-unloading spud box \$8,500. 1965 Chevy truck with 18' flatbed and side racks, no hoist \$750. Located in Othello, WA. 509-989-1695

**100 Truck & Pickup Parts**

Eaton and Rockwell Differentials: several different ratios some used some rebuilt. Freightliner suspensions. Turner, OR. Randy 503-743-2181

Truck Parts/ Misc:  
1995 60 Series Dana front axle: disk brakes, hubs, 4-10 gears, no junk, good \$650 OBO. Shop built tandem axle: 5" wheel dolly with air brakes, adjustable rear hitch, pintle ring \$2,750 OBO. 1989 Ford 391 heavy duty truck motor: parked, running 3 years ago, covered \$750 OBO. Eaton 2 speed axle: 5 hole bud wheels, drum brakes \$550 OBO. 22" 150 gallon aluminum fuel tank with brackets \$200 OBO. 1989 F600 radiator: complete \$155 OBO. 1986 Chevy K30 radiator: \$100 OBO. Yamhill, OR. 503-537-4821

Truck Parts:  
Cummins N-14 Celec: 370 hp, with Jakes. Rockwell RMO9-145B2S Transmission: Rockwell back differential 4:10 ratio. Fuller RTX 14609R transmission: SQ 100 3:90 ratio. Rockwell RT 14609A transmission. SQ 100 3:55 ratio. Medford, OR. 541-773-5097

**We Are The Best Darn Diesel Shop In Oregon!**  
**COME IN AND SEE WHY!**  
And We Absolutely, Positively Have The Best Remanufactured Engines Available Anywhere!  
Huge Inventory • Expert Technical Assistance

**Up To 100,000 mi warranty when we install depending on application**  
ALL ENGINES & CYLINDER HEADS EXCHANGE MUST BE RE-BUILDABLE CORE  
**Rebuilt Diesel Cylinder Heads**

GM		Ford - IH-Navistar	
6.2 - 6.5	\$395.00 ea	6.0 Power Stroke	\$775.00 ea
6.6 Duramax	\$775.00 ea	7.3 Power Stroke	\$425.00 ea
		6.9 - 7.3	\$395.00 ea
Cummins		ISUZU	
4 BT - 3.9	\$695.00	4 BD1 or BD2	\$995.00
6 BT - 5.9, 12V	\$895.00		
6 BT - 5.9, 24V	\$1,095.00		
6 BT - 5.9, 24V, C/R	\$1,095.00		
6 CT - 8.3, 12V	\$1,050.00		

**DIESEL ENGINES**

CAT		FORD	
3204	\$5,350	6.0 PIS	\$4,795
3208	\$5,850	6.4 PIS	\$5,550
3304	\$5,650	6.9 - 7.3	\$3,695
3306	\$5,955	7.3 PIS	\$3,695
NAVISTAR		GM	
DT-466	\$4,985	6.6 Duramax	\$4,595
CUMMINS		ISUZU	
3.9-4BT	\$2,995	4BD2T	\$5,695
5.9 12V	\$3,395		
5.9 24V	\$3,695		
5.9 24V CR, '03 & up	\$4,950		
6.7 CR	\$6,195		
8.3 C	\$5,695		

**PROFESSIONAL REMOVAL AND INSTALLATION AVAILABLE. BEST PRICES ON INFRAME OVERHAULS.**

**CALL FOR APPLICATION NOT SHOWN FOR PRICE AND AVAILABILITY! ASE CERTIFIED AND IN BUSINESS SINCE 1975. OVER 250 ENGINES AND 450 CYLINDER HEADS IN STOCK!**

**R & G MACHINING AND ENGINE PARTS**  
ALL MAKES AND MODELS - FOREIGN AND DOMESTIC AGRICULTURAL, INDUSTRIAL MARINE AND MOTOR HOMES  
**GRUMPY'S DIESELS AND TRUCK REPAIR**  
WE WORK ON TRUCKS, TRACTORS AND LOADERS  
MULINO, OREGON: **800-823-6038**  
SHOP: **503-829-6038**

**Bill Schendel** (503) 990-3637  
**www.billsag.com**  
**High Performance Tires, Wheels & Tracks**  
Creating Solutions for Growing Needs  
Serving Northwest Farmers Since 1980.

**BILL'S AG TIRE** PROFESSIONAL CONSULTING INC.

- Ag & Industrial Tracks
- Flotation Tire & Wheel Sets
- Dual Rims, Hardware, Tires & Hubs
- Tire Sealant PSF-Plus

**LES SCHWAB**

**GROWING WITH FARMERS & RANGERS FOR OVER 65 YEARS!**

FARM TIRES • TRACKS • ATV TIRES

**YIELDMASTER TRACKS BUILT FOR LES SCHWAB COUNTRY**

**WE ALSO CARRY RUBBER TRACKS FOR MINI EXCAVATORS & SKID STEER MACHINES.**

BATTERIES • SPRAYER PACKAGES

**BIO TIRE BALLAST**  
Lighter rubber alternative to ballast.  
• READY TO USE LIQUID  
• HIGHT DUC & BIODERADABLE  
• SAFE TO POE  
• BETTER STABILITY  
• PREVENTS & CURE APPROX.  
• NONFLAMMABLE

**TRACTOR & AG BATTERIES**  
We carry batteries for all your applications needs.

**www.lesschwab.com**

**Also Available Pickup & Truck Accessories RV Accessories**

**ACI AGRI-COVER, INC.**

**Custom Heavy Duty Truck Beds, 8' to 26'**

**Harsh Hoist 6 to 36 Tons**

**Sales & Installation**

**Pummel Truck Supply Co.**  
2310 Hoyt St. SE - P.O. Box 12066  
Salem, Oregon 97309  
**(503) 581-2437 or 1-800-695-6996**

**1-800-451-0012**  
680 SW 1st (Hwy 99 East) Canby, OR  
(503) 266-5886 • FAX (503) 266-6903  
LOVELLTRUCKSALES.COM