

1480 Farm Equipment Parts

CAT D2 with Blade: \$1,500. La-Grande, OR. 541-963-2585

Discount Tractor Parts: new, used, rebuilt, local warehouses. Garfield, WA. Call 800-967-8185 or order online at: www.drapertractor.com

1490 Antique Farm Eq. & Parts

1935 Cletrac Model 40: Diesel, Isaacson dozer, stored inside. Make offer. Creston, WA. 509-636-3621

CAT #64 Rear Tool Bar Ripper: fits D-4, Milwaukie, OR. 971-221-8601

International Harvester Grain Binder: \$600 OBO. 1 bottom, horse-drawn plow \$100 OBO. Jefferson, OR. 541-974-3664

1520 Hay Equipment

#1 Bale Wagons: Buy, Sell, New Holland 2&3 wide self-propelled, pull-type models, parts, tires. Caldwell, ID. 208-880-2889

(2) New Holland 1116 Swather's: 16' heads. Excellent condition field ready \$8,500 each or \$16,000/both. Vermeer R-23 Hydraulic Twin Rake: \$6,500. Wapato, WA. 509-945-0750

16,000 lb. Hyster Squeeze: great condition, Cummins diesel engine with auto transmission \$25,000. Bonanza, OR. 541-892-0063

1974 Freeman Two Tie Self Propelled Baler: with A/C, diesel motor \$10,000. 1972 Freeman two tie self propelled baler: with A/C, diesel motor \$10,000. 1966 Freeman two tie baler: with twin VG4D Wisconsin motors \$5,000. 1971 New Holland 1048 bale wagon: \$10,000. Hermiston, OR. 541-567-5933

2006 Manteca Built Hay Squeeze: standard up right C7 CAT Allison transmission with A/C. Clean machine \$140,000. Jefferson, OR. 541-990-4843

1480 Farm Equipment Parts

1520 Hay Equipment

2002 New Holland HW 230: 14' hay head, 4292 hours. Good condition \$22,500. Pasco, WA. 509-727-5073, nathan@victoryagllc.com



499 New Holland Swather: excellent condition, low hours \$6,995. Culver, OR. 541-419-4001

4X4 Balers: 4910 Hesston (31,800) bales, new updated crank, good maintenance. Reduced \$18,500 OBO. 8590 Case IH, (42,500) bales, new updated crank, good maintenance. Reduced \$18,500 OBO. 4900 Hesston, (50,000+) bales, works well, good maintenance, one owner \$8,000 OBO. Basin City, WA. 509-539-3521

912 New Holland Swather: with conditioner \$2,500. Touchet, WA. 509-876-6977

Bale Feeder For Sale: 20' long. Like new \$12,500. Bridgeport, OR. 541-446-3461

Baler John Deere 336: Field ready \$2,500. Cutter Kvernlund Taarup TA226: 6 disc, good condition \$3,200. 2004 Rake New Holland: Side delivery, model 57, like new \$3,000. Rake Sitrex HM 300 Teder Rake: Good condition \$2,500. Bale Wagon New Holland 1036: with automatic tie, (68) bale capacity, good working condition, pull type \$8,000. Eugene, OR. 541-335-1919, 541-461-0884

BE TR300 Cutter Rake: good condition \$2,500. Dallas, OR. 503-623-6214, 503-480-9460

Case IH 145 Plow: 4 Bottom 18', Spring reset, packer hitch. Nice plow \$3,800. 8' Parma plow nacker to go with it \$900. Nice complete unit ready to go. Pasco, WA. 509-727-5073, natha@victoryagllc.com

1520 Hay Equipment

CASE RBX-452 Round Silage Baler: McHale round bale wrapper, bale grapples included \$35,000. Dallas, OR. 503-931-3724, 503-480-9460



CAT Squeeze Y160: with Sunny D clamp, 3208 diesel \$21,500. San Pablo, CA. 530-510-7548



Clark CY160: with Sunny D clamp, 471 Detroit diesel \$19,500. San Pablo, CA. 530-510-7548

Freeman 370 Baler: Like new, only baled (27,000) bales, recent \$7,600 overhaul and new paint, 16" chamber \$39,000 OBO. Junction City, OR. 541-998-2429

Golden Eagle Hay Rake: Good condition, extra parts! Electric over hydraulic controls \$6,000. Haines, OR. 541-910-0006

HESSTON 8400 SWATHER: 16 foot double sickle hay header, new skid plates, batteries. Excellent tires \$18,500. Culver, OR. 541-977-3048, mcmack2@mindspring.com

Hesston (926) Rotary Swather: (3) Freeman balers, Adams fertilizer spreader and more. Retiring! McArthur, CA. 530-604-4222

Late Model New Holland 575 Baler: 4 rotor: 163 Teder. Tube line Techno bale, round bale hauler. Sandy, OR. 503-887-2455



NEW HOLLAND 1068 HARROWED: Field-ready, excellent condition, gas engine. Less than 4,000 hours. Air conditioned \$16,500 OBO. Ellensburg, WA. 509-899-0772

New Holland 1412 Disc Mower: 10' 4" cut. Excellent condition \$12,500. Curtis, WA. 360-520-1366, 360-245-3727 after 6:00 PM

NEW HOLLAND 216 HAY RAKE: Twin hydraulic rake. Excellent condition \$9,500. Culver, OR. Call 541-977-3048, mcmack2@mindspring.com

New Holland 489 Haybine: mower/conditioner, lots of new parts, 9' cut \$3,000. Beaver, OR. 503-398-5445

New Holland 900 Field Chopper: parting out, \$350 takes it all. Banks, OR. 971-317-6207

NEW HOLLAND BR 740A ROUND BALER: 2005 model, less than 500 bales, wide pickup, bale wrap module, hydraulic pickup, bale ramp \$18,000. Culver, OR. 541-977-3048, mcmack2@mindspring.com

SP185B Challenger Rotary Swather: used last year, runs great and in good shape. Header is in good condition, tires have 50% tread, 2,117 hours \$37,750. H&S wheel rake: good condition, reinforced. Operated this year and in working order \$3,500 OBO. Lake Oswego, OR. Call for more information 541-792-0186

Still Have Parts For New Holland 1048 Bale Wagon: Ashwood, OR. 541-489-6150

V160 Cat Forklift: with Stelco hay squeeze head, side shift, cab, heater, good condition \$23,000. (2) 580 3-string New Holland balers, new condition \$30,000 each or both for \$58,000. 585 New Holland 3-string baler, Deutz engine, 1,200 hours, field ready \$9,500. 50 HP Cornell electric irrigation pump, used 3 seasons \$3,500. Call for pictures. Enterprise, OR. 541-426-4261, 541-263-1446

WANTED 60-B Hesston Stack Hand and 60 Mover: shedded and well maintained. Coggen, IA. 563-480-1673

1530 Potato/Sugar Beet Equip.: 2002 Spudnik Cup Planter: good condition, 6 row, 34" spacing \$5,000. Haines, OR. 541-910-0006, 541-910-0361

1540 Orchard, Vineyard Equip.

2009 Whatcom Mulch Spreader: Orchard model SN# 650-O-H-14' \$16,500. Pasco, WA. 509-727-7475

GROW TUBES: (21,000) used grow tubes. 24" & 30". \$0.15 each. Cave Junction, OR. 541-592-3752



Jacto Arbus 500 Air Blast Sprayer: 2013 model, used less than 100 hours, great for grapes or berries \$8,000 OBO. Silverton, OR. 503-522-7798



KORVAN GRAPE HARVESTER: Korvan 3009, 2002, 1843 head hours, 400 hours on new engine. New, excellent condition, extra parts \$105,000. Kelseyville, CA. 707-245-8110

REARS PAK-FLAIL: Model KSH6970. 76" of mowing, 87" overall \$3,500. Pasco, WA. 509-727-0001

STAINLESS STEEL TRAIL TANK: Victor 500 gallon pull tank with AR503 pump \$3,000 Pasco, WA. 509-727-0001

Trellising Vineyards, Berries and Trees: We've got quality trellising supplies at competitive prices. McMinnville, OR. 1-800-653-2216



TURBO MIST SPRAYER: (400) gallon, 24" fan Turbo Mist orchard/ vineyard sprayer. Gervais, OR. 503-559-6782

RCO Baits Gophers • Squirrels Voles • Moles Ask for Your Capital Press Discount 1-800-214-2248 Harrisburg, OR

Looking for ORCHARD/VINEYARD PROPERTY? Go to Class. 387 Capital Press The West's Ag Weekly www.capitalpress.com 1540-1-52-5/#13

TALLMAN LADDERS Crafted for Safety, Longevity, Stability and Affordability! Quality Made in the U.S.A. Since 1954 tallmanladders.com (541) 386-2733 (800) 354-2733



1560 Tractors #1 Massey Ferguson Tractors: Oregon City, OR. 503-781-0846



1986 CASE IH 3394: 162 hp, 3pt hitch, drawbar. New parts, good condition \$22,000. Ravendale, CA. 530-249-2974

2005 John Deere 8320: MFWD, duals, GPS \$105,000. John Deere 8200 MFWD, duals, 7,500 hours \$55,000. 1974 John Deere 4230 \$7,500. John Deere 2440 \$5,000. 1958 John Deere 720 \$3,000. Othello, WA. 509-989-1695

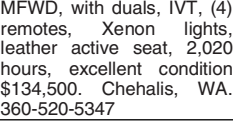
Attention Wanted Kubota or John Deere: 4x4 compact tractor with loader/ equipment. Carlton, OR. 503-550-0094

CAT D4D: recent engine, new wide long tracks, undercarriage, direct start, blade and winch \$16,500 OBO. Kingston, WA. 360-620-3452

Farmall 560: gas, all new tires, restored like new beautiful tractor \$8,000. Located Camano Island, WA. Call Jim @ 360-387-4871

Ferguson S5: One owner, recent repairs, new front and rear seal, new tires and rebuilt corborator. Runs great \$2,200 OBO. Rochester, WA. 360-481-0139

IH 884 70HP PTO: New tires, (2) remotes, dual PTO, 8 speed with 2 speed power shift \$9,000. Curtis, WA. 360-520-1366, 360-245-3727



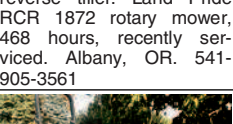
2007 John Deere 7830: MFWD, with duals, IVT, (4) remotes, Xenon lights, leather active seat, 2,020 hours, excellent condition \$134,500. Chehalis, WA. 360-520-5347

1560 Tractors

1989 John Deere 8760: 9,118 hours, 300 HP, 20.8-38 dual radials, 24-speed transmission, guidance and mapping, very clean tractor \$33,000. Moro, OR. Call 541-565-3228

2003 Massey Ferguson 1433V: diesel orchard or vineyard tractor, 4WD, shuttle transmission, one owner, looks and runs like new, 1900 hours \$7,500. Central Washington 509-548-5185

2008 Kubota L2420 HST: with LA 854 loader, quick attach coupler and heavy duty bucket with cutting edge. Land Pride RTR 2072 reverse tiller. Land Pride RCR 1872 rotary mower, 468 hours, recently serviced. Albany, OR. 541-905-3561



2008 New Holland T4050: low profile, 95hp, MFWD, 4,400 hours, runs great \$17,950. Woodburn, OR. 503-984-3190

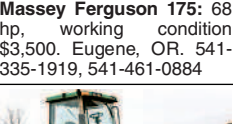
2008 New Holland TN75VA: 1440 hours, 2WD, Excellent condition \$15,000. Pasco, WA. 509-727-7475

2009 John Deere 7330: 150 HP, MFWD, 5,735 hours, deluxe cab, excellent condition \$65,500. Gresham, OR. 503-810-4146



2012 John Deere 8360RT: Approximately 1,800 hours \$235,000. Mattawa, WA. 509-840-0422

Ford 6600: 70 hp, good orating condition \$7,500. Massey Ferguson 175: 68 hp, working condition \$3,500. Eugene, OR. 541-335-1919, 541-461-0884



John Deere 8400: quick hitch, front weights 20, rear weights 1,500 insides, (4) remotes, 9537 hours \$55,000. Mount-Vernon, WA. 360-661-6044

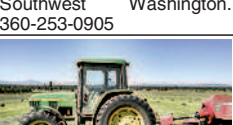


John Deere 850 Tractor: with bucket, 23 HP @ PTO. 4WD, used, but maintained and works well. Brand new seat. Great versatile tractor. Lift arms, PTO, and inputs all work well. Will negotiate delivery if within reasonable distance \$8,000. Ellensburg, WA. 509-607-3256



2013 CASE IH Farmall 45A Diesel Tractor: with new CASE 530 loader, 45 hp, 4WD, 4 speed H/L. Bought new May 2014, 92 hours, warranty will transfer to new owner \$2,500. Independence, OR. 503-508-1967

4410 Ford: with loader, 3 point, 540 PTO, 8 speed, good condition \$7,500. Southwest Washington. 360-253-0905



4X4 John Deere 6410: Power-quad LHR, 16-speed, clean used for baling, shuttle shift \$34,500 OBO. Terrebonne, OR. 541-480-2881

Allis Chalmers G: with 30 gallon spray tank, hy-pro pump, 6' boom with (4) nozzles, runs great \$3,250. Milwaukie, OR. 503-654-0166

(2) Farmall Tractors: (1) in working condition, (1) for parts, great for a project! \$1,500 for both. Crescent-City, OR. 707-464-2641



Allis Chalmers Model G: excellent condition, newly rebuilt engine, hydraulic cultivators, plow/ sickle bar mower attachments \$4,950 OBO. Willows, CA. 530-934-7875

Attention Wanted Kubota or John Deere: 4x4 compact tractor with loader/ equipment. Carlton, OR. 503-550-0094

CAT D4D: recent engine, new wide long tracks, undercarriage, direct start, blade and winch \$16,500 OBO. Kingston, WA. 360-620-3452

Farmall 560: gas, all new tires, restored like new beautiful tractor \$8,000. Located Camano Island, WA. Call Jim @ 360-387-4871

Ferguson S5: One owner, recent repairs, new front and rear seal, new tires and rebuilt corborator. Runs great \$2,200 OBO. Rochester, WA. 360-481-0139

IH 884 70HP PTO: New tires, (2) remotes, dual PTO, 8 speed with 2 speed power shift \$9,000. Curtis, WA. 360-520-1366, 360-245-3727



2007 John Deere 7830: MFWD, with duals, IVT, (4) remotes, Xenon lights, leather active seat, 2,020 hours, excellent condition \$134,500. Chehalis, WA. 360-520-5347

1560 Tractors

IH Farmall Super C Tractor: with fast hitch, 3pt. tri/ wide front, runs good, (6) small equipment \$3,950 OBO. Junction-City, OR. 541-998-2714

IH Tractors For Sale: go to www.mastersauction.com. Click on Proost Farm Retirement. Twin falls, ID.

John Deere 4020: Wheatland M&W turbo, 600 hours on in-frame rebuild, 540-1000 PTO, weights \$14,000. Vicon Type fertilizer Spreader: 3pt. Pendulum 1800 lbs capacity, like new \$3,300. Sheridan, OR. 503-550-2065

John Deere 4430: good condition, hydraulic assist 4X4, new steer tires, 60% rears, good paint and upholstery, delivery available. Goldendale, WA. 503-720-6161

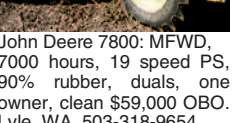
John Deere 4455: MFWD, Power Shift, 15 speed, 50 hours \$43,500 to \$39,500 with tire options. Nampa Tractor, Caldwell, ID. 208-467-4430

John Deere 4555: clean, well maintained, MFWD \$42,500. Junction City, OR. 541-954-6692

John Deere 7020: good condition, PTO, duals, updates upholstery and Air-Ride seat, works well, delivery available \$5,500. Goldendale, WA. 503-720-6161



John Deere 7800: MFWD, 7000 hours, 19 speed PS, 90% rubber, duals, one owner, clean \$59,000 OBO. Lyle, WA. 503-318-9654



1973 Ford F750 Spud Truck: with Lockwood bed and boards \$3,000. Massey Ferguson 30' cultivator \$1,500, 40' Dryvan, U-haul \$1,500. Allis Chalmers HD6 crawler with front blade \$3,500. Walla Walla, WA. 509-520-1090



MFWD, 2384 hours, 23F speed full power shift, (5) remotes, high capacity hydraulic pump, (18) front weights, rear wheel weights, tires 380/80R38 & 380/90R54. In excellent shape & ready to work! ASKING \$129,000

C & E Trenching, LLC (509) 545-6940 P.O. Box 3788, Pasco, WA 99302

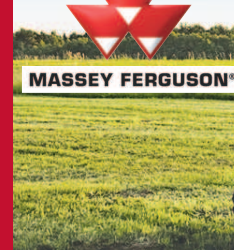


1977 Barth-Hollandrain Drainage Plow: 6800 hours, new parts, under 1000 hours, Cummins 400, planetary drive, one rebuilt, radiator, water pump, alternator, front idler sprockets, reversing fan, joystick controls, 4'6" chutes/boots. Available June asking \$140,000. Jefferson, OR. Derek at RWF BRON 800-263-1060, 1-519-533-2996

1999 5R NW Rotary Corrugator: \$7,500. Pickett 1-step bean cutter \$5,000. 13' John Deere M310 disc \$2,000. Packer with (2) side packers \$1,000. Spudnik 30" pup \$2,000. 15' Mc Shredder \$4,500. 2005 M8060 6R Spudnik planter \$45,000. Othello, WA. 509-989-1695



The 4600 Series provides exactly what livestock farmers have been asking for: an affordable utility tractor that's powerful, versatile and comfortable. Using electronic engine management, our 3-cylinder engine is both powerful and fuel efficient, without the need for regenerating particulate filters.



The 1700 Series is bigger and better in a small package. We have put more into this new compact tractor because your operation demands more from it. Our new 1700 Series offers performance options typical of bigger tractors, yet retains the simplicity of compacts - comfort, ease of use and fuel efficiency.

YOUR LOCAL TRACTOR & IMPLEMENT STORE SINCE 1889 Fischer Mill Supply Inc. HESSTON

• Tractors • Feed • Hardware • Lawn Equipment 20990 S. FISCHER MILL RD, OREGON CITY, OR Exit #10 off I-205 to 2nd light. Right to Redland Rd. to Redland Store. Left to Fischer Mill Supply, 9 miles from I-205. (503) 781-0846 Dean • (503) 329-9232 Mark (503) 631-3411 • www.fischermillsupply.com

SERVICE SPECIAL! Get your equipment in NOW! Hauling discount, shop savings!

Table with columns: TRACTORS, HAY, INDUSTRIAL, TILLAGE, MISC, WOOD CHIPPERS. Lists various equipment models and prices.

1560 Tractors

John Deere 4850: MFWD, 1000 hours on rebuilt engine, power shift transmission, quick hitch \$42,500. Scio, OR. 503-932-7566

John Deere 8235R: 3,600 hours, Powershift, MFWD, 20.8r42, 3scv \$145,000, 2011, warranty. Hubbard, OR. 503-454-8047

John Deere RTK system: 7810, 8325R, 8320T, 6115R, 3720 cab, 2350. Woodburn, OR. 503-454-8047 www.carlsmithllc.org

Keeping One, Your Choice: CASE IH MX285, 6,603 hours \$80,000/ 8950 Magnum, 5,975 hours \$70,000. Montesano, WA. 360-580-5809



Massey Ferguson 230: 50 hours rebuilt motor, 2000 on transmission, new tires, hydraulic oil, filters switches, paint \$15,000 Lodi, CA. 209-401-8749

Universal Model 640: 64 hp diesel tractor, excellent condition, high clearance, set for raised bed farming, \$7,000 OBO. Must Sell! Camas, WA. 360-834-2028, 360-713-1101

TRACTOR RESTORATION MERIDIAN EQUIPMENT is your #1 resource for hard-to-find equip. & parts for restoring that old tractor, OR let our trusted experts do the restoration for you! Satisfied, loyal customers since 1971. 360-398-2143 www.MeridianEquip.com Bellingham, WA



1973 Ford F750 Spud Truck: with Lockwood bed and boards \$3,000. Massey Ferguson 30' cultivator \$1,500, 40' Dryvan, U-haul \$1,500. Allis Chalmers HD6 crawler with front blade \$3,500. Walla Walla, WA. 509-520-1090

1999 5R NW Rotary Corrugator: \$7,500. Pickett 1-step bean cutter \$5,000. 13' John Deere M310 disc \$2,000. Packer with (2) side packers \$1,000. Spudnik 30" pup \$2,000. 15' Mc Shredder \$4,500. 2005 M8060 6R Spudnik planter \$45,000. Othello, WA. 509-989-1695

1999 5R NW Rotary Corrugator: \$7,500. Pickett 1-step bean cutter \$5,000. 13' John Deere M310 disc \$2,000. Packer with (2) side packers \$1,000. Spudnik 30" pup \$2,000. 15' Mc Shredder \$4,500. 2005 M8060 6R Spudnik planter \$45,000. Othello, WA. 509-989-1695



1977 Barth-Hollandrain Drainage Plow: 6800 hours