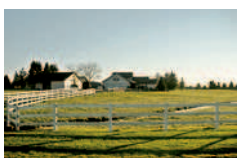


320 Rentals, Leases

(70) Acres Hay Field: plus (40) acres forest with stream, fenced. Salem, OR. 503-999-8866

Farm House/ Barns (60) Acres Pasture: Spring water, beautiful view, Non smoking environment, 6 miles NW from Salem, OR. 503-363-0034

353 Equestrian Properties



(7.6) acre farm: (3,200) sqft. home, barn, shop/ equipment storage, great fencing. Motivated seller, reduced to 495,000. Rochester, WA. 360-273-8075

Line Classifieds
Call Toll-Free
1-800-882-6789
FAX: (503) 370-4383
DEADLINE
Wednesday at Noon
(Holidays may differ)
www.capitalpress.com

356 Ranches

AG Investment Brokers

LAND

COLUSA COUNTY, CA
Walnut Valley Ranch, 8 miles S of Stonyford. 1,247 total ac. w/400+ ac. of class 1 & 2 soil. 3 homes, shop, multiple barns.
NEW - \$1,932,000

TEHAMA COUNTY, CA
Whiteman Ranch, NW of Red Bluff. 2,822 acres. Year round water attracts wild pigs, deer, bear and turkey. Watch You Tube Video "Whiteman Ranch"
NOW - \$3,100,000

530.529.4400
AGLANDBROKERS.COM
DRE # 01707128

356 Ranches

CAPITAL PRESS CLASSIFIEDS CALL 1-800-882-6789
FAX (503) 370-4383
www.capitalpress.com

DECKER'S DEALS!

Contact Everett Decker, agent at John L. Scott-Redmond, OR 541-480-8185
email: everett@johnlscott.com

Lots of things happening in the Real Estate World. Two good weeks of weather in February makes people want to start farming.

40 ACRES OF RANGE LAND. 3 miles from Madras. There is the right to build a Non-Farm Dwelling. Possible owner terms. **\$68,000**
12.88 ACRES OF FLOOD IRRIGATED PASTURE only 3 miles from Redmond. **\$165,000**
A VERY NICE 4 BEDROOM - 2 BATH HOME ON 62 ACRES between Redmond and Bend. 51 acres of COI irrigation on pasture land. Several other dairy buildings. **\$799,000**

WALLOWA COUNTY BROKERS

Combination cattle and hunting ranch on 3,417 acres. Top grazing land with Wet Salmon Creek and Butte Creek flowing through the property. Multiple springs and ponds. Merchantable timber and terrific elk and deer hunting. #14222944 **\$2,315,000**
1,213 acre combination cattle and grain ranch with great elk, deer, and upland bird hunting. 463 tillable non-irrigated acres currently raising grain. Grazing land is mostly timbered with several springs, ponds, and creeks. #11685910 **\$1,314,000 Price Reduced!**
82570 Century Lane, Enterprise Alder Slope 4 bedrooms, 1 bath home on 39 irrigated acres. Gravity water, hay barn, double car garage, springs, creek and big views. RMLS #12229959 **\$399,000**
Coyote Creek Road, Joseph This is a grazing and hunting property on 1,040 acres with Big Sheep Creek and Coyote Creek. The property is at a lower elevation for early season grazing. Great deer and elk hunting with south exposures and timbered draws. There is good access from Coyote Creek Road and Dead Horse Ridge Road. RMLS #14312582 **\$520,000**
Private 160 acres horse property. 100x124 lighted riding arena and 36x120 attached stall building with box stalls and piped water. Borders National Forest and just 3 miles from trail head to Hells Canyon. Home is in partial remodel. 25 acres of non-irrigated hay ground. Fruit trees, great hunting with LOP tags. #11590015 **\$449,000 Price Reduced!**

Kirk Makin, Principal Broker
(541) 398-0340
kirkmakin@frontier.com
Russ Ruonavaara, Broker (541) 398-0618
Kent Sands, Broker (541) 263-1492
russ@buywallowacounty.com kentsands@eoni.com
Office (541) 432-3131 • (866) 977-3131
404 N. Main, Joseph, Oregon 97846

356 Ranches

Shiny Red Ride
Low miles, a little rough on the outside but runs great.

Find great rides in class 1600

Capital Press 1-800-882-6789
www.capitalpress.com

Lower Valley Farm

\$2,700,000

Income Producing Farm in Terrebonne, OR with Cascade Mountain Views. 563 acres with 368 acres well water rights from "Big Bertha Well" with pressure drop nozzle irrigation system - 3 pivots, 7 wheel lines. Improvements include: Country Home, Office, Shop, Red Barn, Cellar(Equipment Storage) and additional building sites. Productive farm has many potential crop opportunities.

Cascade Sotheby's International Realty

DESERT VALLEY GROUP
farm & ranch properties

Pam Mayo-Phillips • Brook Havens
541-923-1376 • www.desertvalleygroup.com
650 SW Bond St., Ste. 100, Bend, Oregon 97702

SCENIC, PRIVATE, UNIQUE

- Home to countless birds, deer and wildlife.
- 431 acre ranch on the banks of the Sprague River, and only 8 miles to Chiloquin.
- In wild rice ponds providing ideal bird habitat.
- Pine and aspen trees, open meadows.
- Ranch has certified water rights from the river and private well for about 190 acres.
- Log home with 3 BR, 2 Baths.
- Numerous outbuildings for equipment, storage plus a horse barn.
- Previously a working cow ranch and could be put back to that use.
- MLS 84375. This is a complete package and **\$1,500,000**

Crater Lake Realty, Inc.
Linda L. Long, Broker
541-891-5562
Chiloquin, OR
linda@craterlakerealtyinc.com • craterlakerealtyinc.com

SIDDOWAY RANCH, DURKEE, OR
Outstanding productive ranch with H.Q. located in ideal low elevation winter climate. 5,445.3± deeded acres including 550± acres irrigated. OUT THE GATE on deeded land, leased private timber grazing land and range land, and 30,000± acres of BLM & USFS land. Capacity for 650± cows plus bulls & replacements. Private land leases available to new owner. LOP tags for 6 deer & 6 elk.
\$6,500,000 including Equipment.
\$6,000,000 without Equipment.

HYLINE ROAD FARM, ONTARIO, OR
78.55±/- deeded acres including 72±/- acres irrigated with half circle pivot, wheel line, solid set & hand lines. Outstanding, clean farm with upgraded home, large shop, historic barn, large enclosed machine shed, hay shed & large attached machine shed. Excellent facilities for purebred or commercial cattle.
\$615,000

Mogensen Land
Cell (208) 890-7172
Office (208) 452-3744
Fax (208) 888-1989
Email mike@mogensenland.com
Web www.mogensenland.com

MIKE MOGENSEN
REALTOR
Farm and Ranch Specialist

356 Ranches

FARM GROUND FOR SALE:
(160) acre ranch for sale in Western Yolo County, CA. Class II and Class III soil, leveled, YCFC district water, PG&E power on property, west of Woodland 5 miles. For more information please call 916-761-1578

Motivated Seller Price Reduced (165) Acres: Douglas County Oregon, new well, septic approved, I-5 access \$325,000. 503-362-3055

CAPITAL PRESS CLASSIFIEDS GET RESULTS!

CENTRAL OREGON RANCHES

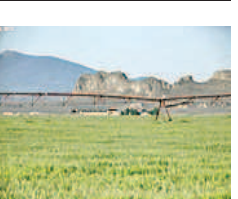
Jeff Larkin REALTY
YOUR FARM & RANCH SPECIALIST



HAY GROUND CATTLE RANCHES FARM GROUND HORSE FACILITIES

Also providing **PROPERTY LOCATING SERVICES**
Old-fashion work ethic with modern day marketing
541-480-5606 • jeff@jefflarkinrealty.com
811 SW 13th St., Ste 105, Redmond, OR 97756
www.jefflarkinrealty.com

356 Ranches



Certified Organic
(420) Acre Alfalfa Ranch: (140) acres of water rights, (2) older pivots with all new controls and a new pump in the well with 96x124 covered hay storage. (2) bedroom, (2) bath house with a partial basement/ cellar. Having equipment negotiated separately \$749,000. Christmas Valley, OR. Call Sheri Edwards with Prudential Seaboard Properties 541-404-6297

A picture speaks 1,000 words



Add a full color photo to your print and online ad today by calling
800-882-6789
capitalpress.com
Capital Press

380 Farms

Lakeview, Oregon
COTTONWOOD CREEK PROPERTY
This beautiful tract of timber and grazing land consists of 1,600 deeded acres and approximately 1,175 acres of adjacent USFS land. The deeded land is comprised of approximately 190 acres of irrigated and sub-irrigated pastureland with approximately 93 acres of water rights, approximately 800 acres of timberland and 600 acres of grazing land. Located 14 miles west of Lakeview, Oregon. **\$1,650,000.**

AGRILANDS REAL ESTATE
72737 Telocaset Lane . Baker City, Oregon 97814
www.agrilandsrealestate.com
Jack Horton, Principle Broker • 208-830-9210
Rae H. Anderson, Broker • 208-761-9553

INVEST & ENJOY

NEW LISTING
96 RANCH - Prineville, OR - \$3,200,000

THERE'S NOTHING LIKE COMING HOME! 96 RANCH
3500 PLUS DEEDED ACRES
16,000 + ACRES NATIONAL FOREST AND BLM PERMIT
THREE HOMES, ONE BUNKHOUSE
4 MULE DEER AND 4 BULLS ELK L.O.P. TAGS
JERRY HICKS - PRINCIPAL BROKER

FAY RANCHES Inc.
Brokering the Finest Farms, Ranches & Land
FayRanches.com/CP | 1-541-420-0679

ANGIE & SARAH'S
TIPS FOR PLACING A SUCCESSFUL LINE AD

- #1 Nothing grabs attention quite like a photo or company logo. If you have one, let us know!**
- #2 Spruce it up: utilize our many add-ons. (eg - banners, yellow, bold, centering, bullet points)**
- #3 Always include your city and state. (It's part of our formatting guidelines to help make the process easier for both the buyer and seller)**
- #4 Before creating your ad, look through the classifieds for ideas to see what you like best.**
- #5 Don't know where to start? Ask Us -- We're here to help you!**

800-882-6789
TEXT: 503-871-4742 • Fax: 503-370-4383
Mail: P.O. Box 2048 • Salem, OR 97308
E-MAIL: sdunsworth@capitalpress.com
OR amoores@capitalpress.com
VISIT: www.capitalpress.com
and use our self-serve ad placement.

380 Farms

EASTERN OREGON PROPERTIES

FARMS

UNION COUNTY, ELGIN, OR - 553 ac. ranch/farm. 185 ac. of irrigated farm land, 3 homes, indoor arena with horse stalls. Grande Ronde River frontage and Gordon Creek running through property. Great income and recreation potential. **\$2,000,000 #CP01914**

GILLIAM COUNTY, ARLINGTON, OR - Rare rural investment property. 1,271±/- of dryland crop, CRP, pasture and wind turbines. 88 ac. currently seeded to wheat, 732 ac. in CRP w/7 yrs. remaining, 444 ac. of range and 10 wind turbines all contribute to the diversity of this investment. **\$1,800,000 #CP01214**

BAKER COUNTY, KEATING VALLEY, OR - 326 ac of which 238 are irrigated with 4 center pivots and wheel-lines. 100 ac of range. Main home, barn and livestock amenities. **REDUCED \$999,000 #CP02714**

UMATILLA COUNTY, PENDLETON, OR - Dryland wheat/CRP farm, Missouri Gulch. 394.73 acres northwest of Pendleton. 172 ac. enrolled CRP through 2022 and 220 ac. in production. **\$633,000 #CP02914**

UMATILLA COUNTY, HERMISTON, OR - 33.5 acres of dry farm ground. UGB City of Hermiston. Next to local airport. **\$250,000 #CP00813**

UMATILLA COUNTY, SOLD Buildable, CRP income, paved road. **\$500,000 #CP01010**

RANCH PROPERTIES

MALHEUR COUNTY, WESTFALL, OR - 22,294 deeded acres, BLM allotment 16,000 AUMS. 2,500 summer cattle operation. 2,422 acre primary water rights, 2 reservoirs, 4 pivots. Multiple homes and facilities. 7 LOP tags for deer/ elk. **REDUCED \$13,900,000. #CP00514**

GILLIAM COUNTY, CONDON, OR - Well known as the Rattray Ranch. Private **SOLD** 100±/- ac. of irrigated bottom land, 2 homes, 2 barns, 2 shops, 20±/- acres of timber, meadows and range. Multiple developed water sources for fishing and irrigation. **REDUCED \$2,500,000 #CP00513**

THE WHITNEY LAND COMPANY
541-278-4444

• Jim Whitney, CCIM/Owner/Principal Broker
• Todd Longgood, Owner/Broker
• Travis Bloomer, Broker
• Blake Knowles, Broker
• Scott Coe, Broker
• Gary Jellum, Broker

101 S.E. 3rd
P.O. Box 1614
Pendleton, OR 97801
www.whitneylandcompany.com

WHEELER COUNTY, Twickenham, OR - 7,744.08 deeded ac. with 3,407 BLM ac. of grazing allotments. 47 ac of irrigated bottoms. 2 ±/- miles of John Day River frontage. Hunting for deer, elk, upland birds, waterfowl and Mouflon sheep with LOP tags. **\$3,975,000. #CP03414**

UNION COUNTY, MEDICAL SPRINGS, OR - 5,350 acres timber parcel with mountain pasture. Additional grazing acres available for lease from seller. Ponds and springs. LOP tags for deer and elk. Located adjacent to Wallowa Whitman National Forest. **\$3,445,000 #CP02514**

UMATILLA COUNTY, SOLD 1,200±/- acre dryland wheat farm near Hermiston. Good soils and solid yields. Asking price **\$2,975,000.**

WALLOWA COUNTY, ELGIN/TROY, OR - Private river frontage with building sites on the Grande Ronde River. Catch salmon and steelhead or hunt deer and elk from this 1461 acre timber ranch. Includes home, air strip. Recreation paradise. **\$2,900,000. #CP01811.**

MALHEUR COUNTY, IRONSIDE, OR - 4,500 acre of which 3,080 acres deeded and 200 acres are irrigated. Excellent springs and perennial stream. Home, multiple outbuildings and livestock facilities. **\$2,750,000 #CP00914**

UMATILLA COUNTY - UKIAH, OR - Provides 2.5 miles of river frontage on the N.E. John Day River. 148 deeded acre, 2 home, 2 barns, 2 shops, 20±/- acres of timber, meadows and range. Multiple developed water sources for fishing and irrigation. **REDUCED \$2,500,000 #CP00513**

BAKER COUNTY, Bridgeport, OR - 2,729.26 deeded acres timber, meadows and irrigated hay fields. Multiple creeks and springs, and Burnt River flowing through property.. Home, outbuildings and multiple buildable sites. LOP tags. Gold mining potential. **\$2,495,000 #CP01114**

BAKER COUNTY, DURKEE, OR - 2,021 ac Ranch or hunting getaway. Home, outbuildings. BLM permit. Sagebrush/bunchgrass, springs, timber. Remote setting, quick I-84 access. **\$1,800,000 #CP03214**

MORROW COUNTY, Near Lone, OR - 1,110.86 Ac., of which 192.3 Ac. are irrigated and 94.3 are in CRP. 4 homes, outbuildings, recreation. Located along Rhea Creek. **\$1,700,000. #CP02213**

UMATILLA COUNTY, PENDING 177 acres of wheat group, 20±/- irrigated acres. 40 acres of sub-land 2 older homes. **\$1,650,000. #CP02210**

BAKER COUNTY, Keating, OR - 1,312 acre timber parcel with mountain pasture. Balm Creek Reservoir. Stream and springs. LOP tags. Located adjacent to Wallowa Whitman National Forest. **REDUCED \$1,150,000 #CP00714**

BAKER COUNTY, Baker Valley, OR - 307±/- acres. Irrigated grass pasture, house, working facilities. 197 ac primary w/129 ac supplemental rights. 100 ac rangeland. Located 3 miles from Baker City. **\$725,000. #CP03314**

MORROW COUNTY, IONE, OR - 853.48 ac. ranch with 507.5 ac. currently in CRP. Located 10 miles south of lone. 2,402 sf home, outbuildings, recreation. **\$700,000 #CP01014**

UNION COUNTY, ELGIN, OR - Located on the Grande Ronde River, this 361.76 ac scenic property has great fishing. Looking Glass Creek flows through the property. **\$608,000 #CP02711**

UMATILLA COUNTY, Weston, OR - Weston Mtn. solitude. 40.91 ac. with a 2,850 sq. ft. 3 bed, 4 bath home. Huge shop. **\$550,000 #CP02814**

UNION COUNTY, UNION, OR - 325.97±/- acres. Timber parcel with 1/2 mile of Catherine Creek. 1 mm BF timber per 2010 cruise. Adjacent to USFS. Downstream from wilderness access area. 11 mi south of Union. **\$499,000. #CP02614**

BAKER COUNTY, BAKER VALLEY, OR - 218 acres. Irrigated grass pasture 118 ac. Powder River and Phillips Reservoir water rights. Buildable. Located 6 miles from Baker City. **\$379,000 #CP01814**

UMATILLA COUNTY, ADAMS, OR - 121.50 total acres of which 20 acre irrigated hay/pasture. Includes main residence, barn and additional outbuildings. **\$359,900 #CP01612**

UMATILLA COUNTY, HERMISTON, OR - 109.37 total acres of range, 20±/- irrigated, with power and well. **\$350,000. #CP03114**

SHERMAN COUNTY, WASCO, OR - 102 acre parcel of range. Unique rock mine with China Hollow Jasper and opal. Income potential with BP transmission and rock mine. **\$239,000. #CP01714**

BAKER COUNTY, Baker City, OR - 12 acres. Pine Creek, large timber, 30'x40' pavilion, well, 15 min. from town, able to be subdivided. Zoned R95. **\$169,000 #CP02414**

BAKER COUNTY, Greenhorn, OR - 67 acre timber parcel. 20'x16' cabin with loft. Recreational getaway - springs, pond, meadow. **\$167,000 #CP00814**