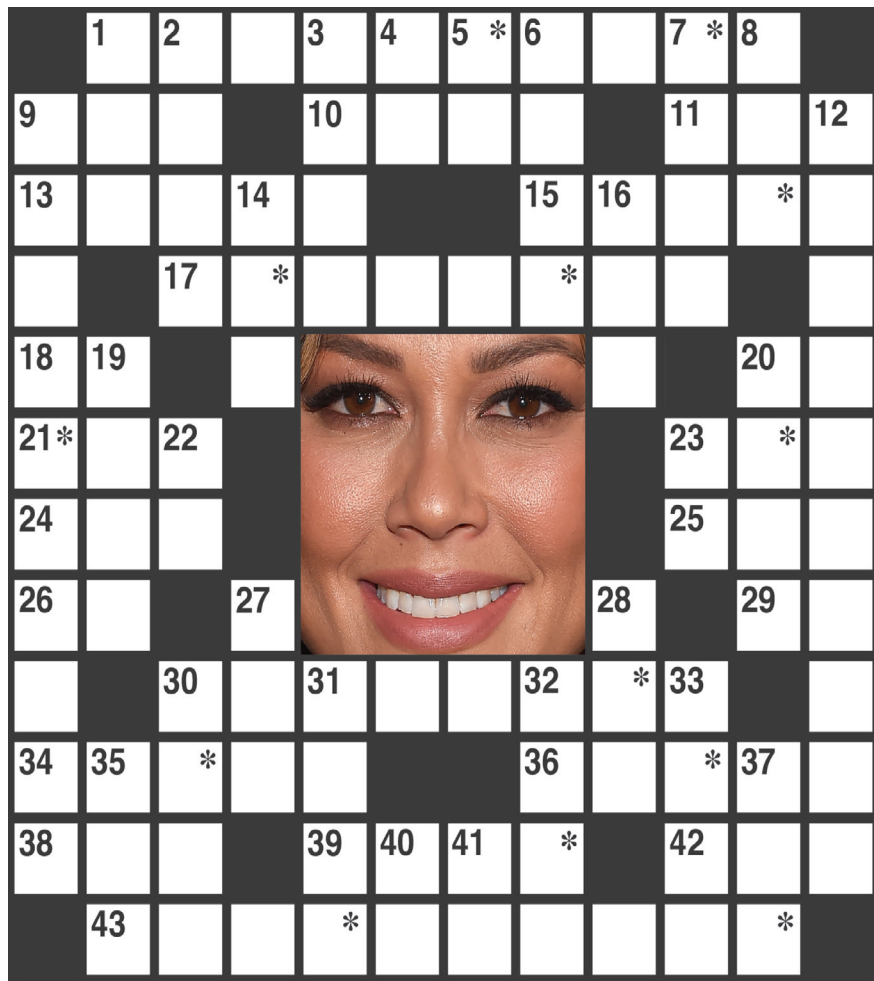


# crossword puzzle



The identity of the celebrity is found within the answers in the puzzle. In order to take the TV Challenge, unscramble the letters noted with asterisks within the puzzle.

**ACROSS**

- 1. “\_\_ \_\_ Harvey”
- 9. Actor Chaney Jr.
- 10. “Sesame Street” character
- 11. “\_\_ Got a Secret”
- 13. Potato salad ingredient
- 15. “The George \_\_ Show” (1954-60)
- 17. ABC game show (2)
- 18. Initials for Jackie Kennedy’s 2nd husband
- 20. \_\_ Grosland of “New Amsterdam”
- 21. “Ordinary Joe” network

- 23. Olsen of vaudeville
- 24. Actor Young
- 25. Role on “Law & Order: SVU”
- 26. Spielberg’s 1982 creature
- 29. “\_\_ Elsewhere”
- 30. “FBI” actress
- 34. Clear the slate
- 36. “... the bombs bursting \_\_ \_\_ ...”
- 38. “\_\_ \_\_ Married an Axe Murderer”; Nancy Travis film
- 39. Drug agent
- 42. Suffix for real or rigid

**DOWN**

- 1. Stewart or Cryer
- 2. College credit
- 3. Tierney or Wilder
- 4. “Bad Times at the \_\_ Royale”; 2018 movie
- 5. McQueen’s initials
- 6. Old Roman robe
- 7. Instinctive feeling
- 8. One who raised Cain
- 9. “NCIS: \_\_ \_\_”
- 12. “Abbott \_\_”
- 14. Actress Sandra & others

- 43. Series for Will Estes (2)

## LOOK! LOOK! LOOK! FRESH ARRIVALS!



**2022 Chevrolet Trax**  
**\$26,170**



**2022 GMC Terrain**  
**\$40,330**

### Technician Wanted!

## Call Us Today

**1740 Washington Baker City**  
**1-800-399-391**  
[www.bakercitygmsales.com](http://www.bakercitygmsales.com)



- 16. University in Columbus
- 19. Final notice, for short
- 22. Initials for actor Clu
- 25. Role on “Law & Order: SVU”
- 28. OB-\_\_; women’s doctor
- 31. Actress Russo
- 32. Puerto \_\_
- 35. Lowe or Reiner
- 37. “\_\_ Complicated”; Meryl Streep movie
- 39. Drug agent
- 40. \_\_ negative; rarest blood type
- 41. Lansing’s initials
- 42. Suffix for real or rigid
- 43. Series for Will Estes (2)

# THANK YOU

To our community, we thank you for your support in our event!

We want to give a special thanks D&B Supply, Sodexo, Safeway and Phyllis Walker (quilt maker) for their generous donations which made this event memorable & impactful





**Turning 65?**  
We're here to help!

**Joel Myer**  
[jmyer@valleyinsurance.com](mailto:jmyer@valleyinsurance.com)



1603 Washington Ave, La Grande  
**(541) 963-3121**

Let us take the **mystery** out of Medicare for you!

**Kathy Rienti**  
[krienti@valleyinsurance.com](mailto:krienti@valleyinsurance.com)

