

# East meets West in Chinese brush painting exhibit

Go! staff

**P**ENDLETON — A new art show is open for viewing at the Betty Feves Memorial Art Gallery at Blue Mountain Community College.

"Chinese Brush Painting: A Progression by Artist Tien-chu Loh" will be on display through March 10. Nearly 30 ink paintings are featured in this solo show. His subjects include landscape, animals and calligraphy.

Born and raised in Hong Kong, Tien-chu Loh attended Oregon State University, where he received degrees in microbiology and pharmacy. He worked as a pharmacist for more than 30 years, including a few years in Pendleton in the early 1980s. Now retired, he enjoys spending time on his creative endeavors, including photography and Chinese brush painting. Loh participates in exhibitions and demo sessions at local art shows, libraries and the Lan Su Classical Chinese Garden in Portland.

Loh said he likes to experi-



Tien-chu Loh/Contributed image  
"Huangshan (Yellow Mountain)," ink on Xuan paper, by Tien-chu Loh.

ment with various Chinese brush techniques.

"I prefer the Xieyi (expressive)

over the Gongbi (meticulous and formal) style," he said.

He works with round brushes,

ink, color and Xuan paper, a traditional style of rice paper known for its fine surface.

## ART SHOW

Featuring Chinese Brush painter Tien-chu Loh  
Betty Feves Memorial Art Gallery  
Blue Mountain Community College  
2411 NW Carden Ave.,  
Pendleton

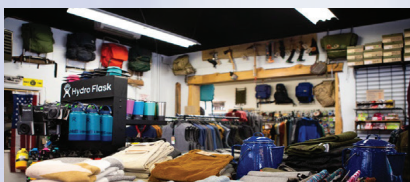
"I enjoy working with my hands, thus I construct a lot of my frames and display my works in a non-conventional fashion," he said.

His paintings reflect both his heritage and his immersion in Western culture. The exhibition includes pieces that exemplify a range of technical skills and Loh's refined artistic sensibilities.

The Betty Feves Memorial Art Gallery at BMCC, 2411 NW Carden Ave., welcomes tours from schools, clubs and other organizations during exhibits. The gallery is open Monday through Thursday, 9:30 a.m.-1:30 p.m. Admission is free.



**BLUE MOUNTAIN  
OUTFITTERS**



1124 ADAMS AVE  
LA GRANDE  
541-624-3113

BLUEMTOUTFITTERS.COM  
MON-SAT 10-6, SUN 12-4



Barley Brown's  
Tap-Room & Brewery  
2200 Main, Baker City  
541-523-BEER



WINNER OF OVER  
**100**  
Beer Awards

**2 Locations on  
Main & Church**

Barley Brown's Beer  
Available Throughout Baker City  
www.barleybrownsbeer.com



"Downtown Baker City's best  
and biggest dinners from this  
family-friendly brew pub"  
- Best Places Northwest 15th Edition



Restaurant  
Open

11am-8pm Tuesday-Saturday