

Partner cast aside amid man's personal struggles



DEAR ABBY
ADVICE

DEAR ABBY: For the past three years I've been with a man I believe is the love of my life. Early on, he admitted to a porn addiction that has plagued him his entire life and sabotaged past relationships. With my support, he began his first real attempt at recovery, which included a team of mental health practitioners.

His progress over the past three years, while not linear, has been tremendous. He's an entirely different person. I would describe

our relationship as 90% joyful, 10% agony (he has had four brief relapses, during which he has said incredibly hurtful things to me). I agree the cycle must be broken, and only he can do it.

A week ago, he had a difficult relapse and ended our relationship. His therapist feels he needs to be on his own to focus on recovery. While I am devastated, I agree. But I can't understand why he's giving up on us forever and making big decisions like getting off the mortgage on the house we bought less than two years ago. He swears it has nothing to do with me, and that if it weren't for this addiction, he would spend the rest of his life with me.

If his plan is to live alone, be single or celibate, and focus on recovery, why wouldn't he also pause on major financial decisions? Why is he so completely done when there is clearly hope for recovery and reconciliation?

— BROKEN-HEARTED IN OREGON

DEAR BROKEN-HEARTED: You have involved yourself with someone who has a terrible track record when it comes to relationships. Whatever his plans for the future may be, he does not want a committed relationship with you, nor does he want the financial responsibility and the tie to you that the house represents, which is why he

wants off the mortgage. It is now time for you to start looking after your own needs and goals. If you stay busy and don't isolate yourself, it will lessen the pain you are feeling.

DEAR ABBY: My brother divorced his first wife 10 years ago. Since then, he has married a wonderful woman my family adores. The problem is, my ex-sister-in-law insists on showing up for family events, which makes these celebrations extremely awkward. Even her children recognize how uncomfortable her presence makes everyone.

I don't mind being the "bad guy" and telling her that she's no longer welcome at family events,

but I don't want to cause an ugly scene. How can I diplomatically (but firmly) tell her to stay away? Any suggestions would be appreciated. — **FLUMMOXED IN PHILADELPHIA**

DEAR FLUMMOXED: What a sad situation. Your brother, not you, should deliver the message to his ex, well before she shows up at your next family event. He should inform her that when she shows up uninvited, her presence makes everyone uncomfortable, and it would be best that she not impose again. You could lessen the hurt by occasionally seeing her separately, depending upon the circumstances of the divorce.

NEWS OF THE WEIRD

Pilot rescued from wreckage in LA moments before train hits

The Associated Press

LOS ANGELES — The pilot of a small plane averted death twice in a span of minutes on Sunday, Jan. 9, first when he crash-landed onto railroad tracks, then when Los Angeles police rescued him just before a commuter train smashed into the aircraft.

Bodycam video showed the officers working furiously to disentangle the bloodied pilot from the cockpit of the crumpled Cessna 172.

"Go! Go! Go! Go! Go!" someone yelled as the officers dragged the man away seconds before the Metrolink train, its horn blaring, barreled through the plane.

The single-engine plane had engine failure during takeoff from Whiteman Airport in the San Fernando Valley community of Pacoima and went down moments later, police Capt. Christopher Zine told reporters.

The plane ended up on a rail crossing in an intersection adjacent to the airport and just blocks from the Los Angeles Police Department's Foothill Division station. Officers arrived at the crash scene almost immediately.

"I had requested Metrolink to cease all train activity, but apparently that didn't happen," Sgt. Joseph Cavestany told CBSN Los Angeles.

Officer Christopher Aboyte told KABC-TV that he initially stood by the plane trying to keep the pilot, who was seated, conscious and alert.



Los Angeles Police Department/Contributed Photo

In this screen grab from a body cam video provided by the Los Angeles Police Department, a commuter train crashes with a plane which had just taken off from nearby Whiteman Airport Sunday, Jan. 9, 2021, in Pacoima, Calif. Los Angeles police officers pulled an injured pilot from the wreckage of a small plane that crash landed on railroad tracks just moments before a commuter train smashed into the aircraft over the weekend.

Then, bells and flashing lights signaled an oncoming train. Officer Robert Sherock told the station.

"We looked and sure enough there was a train headed right for us at full speed," he said.

Officer Damien Castro told KNBC-TV that training and experience kicked in, and adrenaline helped.

"When things like that happen you kind of just go and do it," Castro said. "You don't really have much time to think."

The bodycam captured the sight and sound of the train blasting through where the pilot had been seconds earlier.

"I think this guy needs to buy a lottery ticket 'cause he pretty much cheated

death twice within 10 minutes," Sherock told KNBC.

The pilot was the only person on board. He was taken to a hospital.

He was identified as 70-year-old Mark Jenkins by a relative, Dan Mortensen, who told KNBC-TV that the pilot suffered "pretty significant" damage to his face including broken bones and also had broken ribs.

Jenkins is a "very experienced" former U.S. Air Force fighter pilot, said Mortensen, who co-owns the plane.

Mortensen said Jenkins probably intended to land on the tracks to avoid possibly hitting people on the ground.

"He didn't anticipate a train coming through at 80

mph," Mortensen said.

Metrolink service was halted and road traffic was detoured in the area about 20 miles northwest of downtown Los Angeles. The FAA and the National Transportation Safety Board will investigate.

Second Starbucks store near Buffalo votes to unionize

BUFFALO — A second Starbucks store near Buffalo, New York, has voted to unionize, one of a growing number of the coffee chain's stores seeking to organize workers.

Workers at the store, in the suburb of Cheektowaga, voted 15-9 in favor of representation by Workers United, an affiliate of the

Service Employees International Union. The National Labor Relations Board confirmed the vote Monday, Jan. 10.

Starbucks is evaluating its options and may appeal, a spokesperson for the company said. The company has 10 business days to file an appeal to the full labor board. If the appeal is denied, it must bargain with the union.

Last month, Starbucks workers voted to unionize workers at a store in downtown Buffalo, making that store one of the first to unionize in Starbucks' 50-year history. But at the time, the outcome of union elections at two other area stores — in Cheektowaga and Hamburg — were unclear. The union and

Starbucks both challenged the eligibility of some voters.

Union spokesman Richard Bensinger said that the labor board had sided with the union and rejected the votes from six workers who had only briefly worked at the Cheektowaga location. Bensinger said the results from the Hamburg store remain undecided.

The union victory last month has set off a wave of interest in unionization at other Starbucks locations. Individual stores in Massachusetts, Arizona, Oregon, Illinois, Colorado, Tennessee and Starbucks' home city of Seattle have petitioned the labor board for union elections. Three additional stores in Buffalo are also seeking union votes.

Starbucks owns more than 8,000 stores in the U.S.

Starbucks says its stores function better when it works directly with employees, not through a third party. But the company has said it will begin the bargaining process with the downtown Buffalo store.

"The vote outcomes will not change our shared purpose or how we will show up for each other," Starbucks Executive Vice President Rossann Williams said in a recent letter to employees.

Lexi Rizzo, a shift supervisor at the Cheektowaga store, said it was an emotional day for workers who backed the union.

"Finally, the partners feel we have a voice at our workplace," she said in a statement distributed by Workers United.

AccuWeather | Go to AccuWeather.com

weather

| | TONIGHT | FRI | SAT | SUN | MON |
|-------------------|---------------|---------------|-------------------------|---------------|---------------|
| | Mostly cloudy | Mostly cloudy | Sun through high clouds | Mostly cloudy | Mostly cloudy |
| Baker City | 24 | 34 22 | 35 18 | 33 23 | 35 22 |
| Comfort Index™ | 2 | 3 | 1 | 1 | 0 |
| La Grande | 34 | 39 30 | 39 22 | 36 27 | 39 27 |
| Comfort Index™ | 2 | 3 | 3 | 3 | 2 |
| Enterprise | 30 | 40 27 | 40 24 | 39 27 | 39 29 |
| Comfort Index™ | 4 | 4 | 4 | 4 | 4 |

Comfort Index takes into account how the weather will feel based on a combination of factors. A rating of 10 feels very comfortable while a rating of 0 feels very uncomfortable.

ALMANAC

| TEMPERATURES | Baker City | La Grande | Elgin |
|------------------------|------------|-----------|-------|
| High Tuesday | 33° | 38° | 39° |
| Low Tuesday | 11° | 30° | 29° |
| PRECIPITATION (inches) | | | |
| Tuesday | Trace | 0.00 | 0.00 |
| Month to date | 0.27 | 0.82 | 2.77 |
| Normal month to date | 0.26 | 0.65 | 1.24 |
| Year to date | 0.27 | 0.82 | 2.77 |
| Normal year to date | 0.26 | 0.65 | 1.24 |

TUESDAY EXTREMES

| NATION (for the 48 contiguous states) | |
|---------------------------------------|---------------------|
| High: 85° | Santa Ana, Calif. |
| Low: -27° | Clayton Lake, Maine |
| Wettest: 4.17" | Quillayake, Wash. |
| OREGON | |
| High: 59° | North Bend |
| Low: 14° | Baker City |
| Wettest: 0.56" | Astoria |

WEATHER HISTORY

Temperatures soared to 70 degrees in central Pennsylvania on Jan. 13, 1932. In colder regions, the greatest likelihood of unseasonably high temperatures, a January thaw, is from Jan. 7-10 and from Jan. 20-26.

SUN & MOON

| | THU. | FRI. |
|----------|-----------|-----------|
| Sunrise | 7:29 a.m. | 7:29 a.m. |
| Sunset | 4:33 p.m. | 4:35 p.m. |
| Moonset | 1:09 p.m. | 1:43 p.m. |
| Moonrise | 4:03 a.m. | 5:05 a.m. |

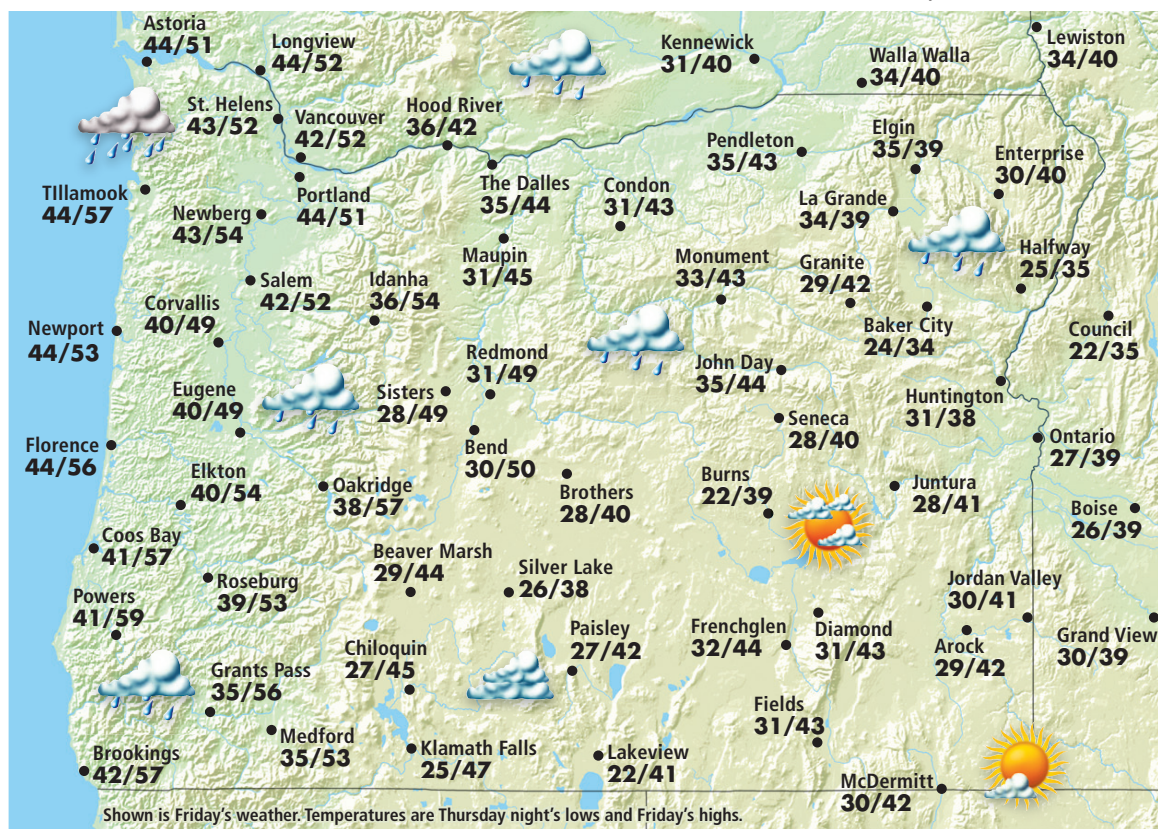
| MOON PHASES | Full | Last | New | First |
|-------------|--------|--------|--------|-------|
| | Jan 17 | Jan 25 | Jan 31 | Feb 8 |

AGRICULTURAL INFO.

| HAY INFORMATION FRIDAY | |
|--|--------------------|
| Lowest relative humidity | 50% |
| Afternoon wind | SSE at 6 to 12 mph |
| Hours of sunshine | 0.3 |
| Evapotranspiration | 0.04 |
| RESERVOIR STORAGE (through midnight Wednesday) | |
| Phillips Reservoir | 1% of capacity |
| Onity Reservoir | 24% of capacity |
| Uwehee Reservoir | 18% of capacity |
| McKay Reservoir | 24% of capacity |
| Wallowa Lake | 18% of capacity |
| Thief Valley Reservoir | 23% of capacity |
| STREAM FLOWS (through midnight Tuesday) | |
| Grande Ronde at Troy | 1530 cfs |
| Thief Valley Reservoir near North Powder | 1 cfs |
| Burnt River near Unity | 15 cfs |
| Umatilla River near Gibbon | 264 cfs |
| Minam River at Minam | 239 cfs |
| Powder River near Richland | 49 cfs |

AROUND OREGON AND THE REGION

Forecasts and graphics provided by AccuWeather, Inc. ©2022



REGIONAL CITIES

| City | FRI. Hi/Lo/W | SAT. Hi/Lo/W | City | FRI. Hi/Lo/W | SAT. Hi/Lo/W |
|---------------|--------------|--------------|-------------|--------------|--------------|
| Astoria | 51/41/pc | 50/38/c | Lewiston | 40/31/c | 38/30/pc |
| Bend | 50/31/pc | 54/28/pc | Longview | 52/36/pc | 48/37/c |
| Boise | 39/25/s | 40/26/pc | Meacham | 39/28/c | 38/23/pc |
| Brookings | 57/41/c | 59/43/s | Medford | 53/32/pc | 53/34/pc |
| Burns | 39/21/c | 37/17/c | Newport | 53/40/pc | 52/40/pc |
| Coos Bay | 57/38/pc | 57/38/pc | Olympia | 59/29/pc | 49/39/c |
| Corvallis | 49/37/pc | 48/34/pc | Ontario | 39/29/c | 39/28/pc |
| Council | 35/24/pc | 31/20/c | Pasco | 39/33/c | 41/30/c |
| Elgin | 39/26/c | 38/23/pc | Pendleton | 43/30/c | 40/26/c |
| Eugene | 49/36/pc | 49/36/c | Portland | 51/36/pc | 50/37/c |
| Hermiston | 43/32/c | 43/29/c | Powers | 59/38/s | 59/38/pc |
| Hood River | 42/36/pc | 43/29/c | Redmond | 49/26/pc | 51/24/pc |
| Imnaha | 46/33/c | 45/30/pc | Roseburg | 53/37/pc | 52/36/c |
| John Day | 44/31/pc | 42/30/c | Salem | 52/36/pc | 49/37/pc |
| Joseph | 41/30/c | 42/27/pc | Spokane | 38/31/c | 37/33/c |
| Kennewick | 40/34/c | 43/30/c | The Dalles | 44/35/pc | 41/32/c |
| Klamath Falls | 47/21/pc | 45/23/s | Ukiah | 42/26/c | 41/23/pc |
| Lakeview | 41/18/pc | 41/17/s | Walla Walla | 40/31/c | 39/30/c |

Weather(W): s-sunny, pc-partly cloudy, c-cloudy, sh-showers, t-thunderstorms, r-rain, sf-snow flurries, sn-snow, i-ice

RECREATION FORECAST FRIDAY

| Location | Forecast | High | Low |
|---------------------|---------------|------|-----|
| ANTHONY LAKES | Mostly cloudy | 36 | 28 |
| PHILLIPS LAKE | Mostly cloudy | 41 | 24 |
| MT. EMILY REC. | Mostly cloudy | 36 | 33 |
| BROWNLEE RES. | Mostly cloudy | 43 | 29 |
| EAGLE CAP WILD. | Mostly cloudy | 37 | 20 |
| EMIGRANT ST. PARK | Mostly cloudy | 39 | 28 |
| WALLOWA LAKE | Mainly cloudy | 41 | 30 |
| MCKAY RESERVOIR | Cloudy | 47 | 28 |
| THIEF VALLEY RES. | Mostly cloudy | 34 | 22 |
| RED BRIDGE ST. PARK | Mostly cloudy | 39 | 30 |