

# What's Available NOW On

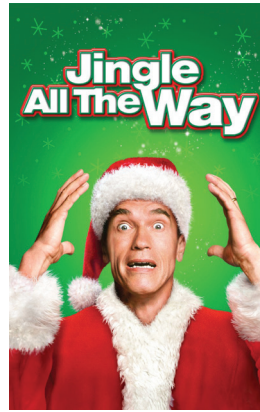
## “Foodtastic” (Dec. 15)

Emmy winner Keke Palmer (“Turnt Up With the Taylor”) hosts in this competition series in which teams of two must create food sculptures that depict characters and scenes from Disney-related productions. Flour Shop founder Amirah Kassem and New York’s City Cakes founder chef Benny Rivera serve as food art experts and commentators. (ORIGINAL)



## “Jingle All the Way” (Available now)

In this 1996 comedy, Arnold Schwarzenegger plays a dad who needs to score points with the son (Jake Lloyd) he’s been neglecting. So he sets out to find the Christmas toy that he wants most. Unfortunately, it’s also the toy every other kid wants most, and our hero has to deal with manic moms, black marketeers and another desperate dad (Sinbad) to get it.



## “Diary of a Wimpy Kid” (Available now)

From director Swinton Scott (“Futurama”) comes this animated comedy movie that follows Greg Heffley, a scrawny but ambitious kid with an active imagination and big plans to be rich and famous. The problem is he has to survive middle school first. The voice cast is headed by Brady Noon, Chris Diamantopoulos and Ethan William Childress. (ORIGINAL)



## “Christmas Again?!” (Available now)

This 2021 holiday comedy stars Scarlett Estevez (“If You Give a Mouse a Cookie”) as Rowena, a spirited 11-year-old who has high hopes for her Christmas celebration this year when her parents’ divorce hits a few snafus. Daniel Sunjata, Alexis Carra and Priscilla Lopez also star for director Andy Fickman (“Race to Witch Mountain”). (ORIGINAL)



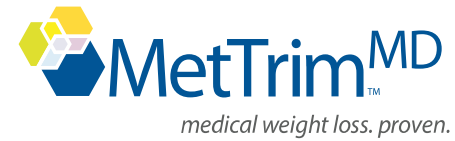
## triviaquiz BY JOHN CROOK That ‘60s show

### Questions:

- 1) Richard Chamberlain became a popular TV heartthrob in the title role as an idealistic intern in what 1961-66 NBC medical drama?
- 2) On what network did the hit sitcom “Bewitched” run from 1964-72?
- 3) Actress Shirley Booth won two Emmys as meddling maid Hazel Burke in what NBC sitcom based on the Saturday Evening Post cartoons of Ted Key?
- 4) One staple on the long-running “The Red Skelton Show” was a series of popular jokes about two animal characters named Gertrude and Heathcliff. What kind of animals were they?
- 5) On “The Andy Griffith Show,” in what state was the town of Mayberry supposedly located?

- Answers:**
- 1) “Dr. Kildare”
  - 2) ABC
  - 3) “Hazel”
  - 4) Seagulls
  - 5) North Carolina, Griffith’s home state

Richard Chamberlain



## Lose Weight Now, in La Grande

Doddsy from EOActive lost 40 pounds so far



Scan the code to watch Doddsy on video tell his story



James R. Kopp, MD, MBA  
Weight Loss Physician

“If you struggle to lose weight and keep it off, come see me. Our program helps men, women, and adolescents lose 10 to 150+ pounds safely, rapidly, and healthfully. Scan the code and watch Doddsy’s video. Please call my office, and Kathy will schedule your Free No-obligation Consultation to learn how we can help you too. Then you decide what you’d like to do. I look forward to meeting you.”  
—Dr. Kopp

**Call 541-963-9844**

Or visit [MetTrimMD.com/LaGrandeOR](https://MetTrimMD.com/LaGrandeOR)  
to Schedule your **Free No-obligation Consultation**

MetTrimMD La Grande  
907 Washington Ave, La Grande, OR 97850  
[MetTrimMD.com/LaGrandeOR](https://MetTrimMD.com/LaGrandeOR) | 541-963-9844

\*Personalized plans. Individual results vary.