

# Boyfriend takes charge after couple moves into his house

DEAR ABBY: I have been with the same man for almost 30 years. We are not married and have no children together. He is 15 years older than I am.

We have been living in his house for the past seven years. I feel more like a renter than a partner in this relationship. I give him money every month, and we sleep in separate rooms. He wants to control everything in his house, including how to clean, cook or what we eat. I bite my lip to avoid starting a confrontation.

He is a lifelong bachelor, while I have two adult children and a

couple of grandkids. I'm not sure how much more of this I can take.

I work all day; he doesn't. I want to leave, but at the same time,

I care and worry about him. What should I do?

— DISILLUSIONED IN ILLINOIS



DEAR ABBY

DEAR DISILLUSIONED: Quit biting your lip. Gather your courage and start an honest conversation with your housemate in which you tell him you have been unhappy with the status quo for a long time. Then outline the changes that would make you happy. If he isn't willing to compromise,

then pack your bags and leave because you will know the feelings you have for him are not mutual.

DEAR ABBY: I've been "friends" with a woman for 25 years. For a time, we were best friends and did everything together, but we couldn't be more different. It caused many fights and disagreements over the years. She has deeply hurt and embarrassed me countless times. She ruined birthdays, damaged other relationships — even ruined my bachelorette party. I don't know why I still bother with her. I think because of our deep roots, it's hard to let go.

At the moment, we hav-

en't spoken in more than two months, and I know she's upset with me yet again. Should I reach out and mend the bond? Do I use this as a stepping stone to start moving on? I love her, but I know it really is a toxic relationship.

— OFF AGAIN IN NEW JERSEY

DEAR OFF AGAIN: Please reread the last sentence of your letter. Do not bother reaching out and trying to mend the breach in your relationship. You cannot fix what's wrong with this old friend, but you can move on. Her silence is giving you the opportunity. Take it!

DEAR ABBY: My son is getting

married in a couple of weeks. Due to COVID-19, he and his fiancée are having to downsize the list of invitees. This includes asking those who have already RSVP'd "yes" and/or have already given them a wedding gift not to attend. Should they return the wedding gifts to those they are disinviting to the wedding?

— WONDERING IN THE SOUTH

DEAR WONDERING: Your son and his fiancée should at least offer to return the gifts. Considering the reason for the downsizing, some of the no-longer-invited guests may tell them to keep them along with their good wishes, while others will not.

## NEWS OF THE WEIRD

### 'Nothing but problems': Shipwreck tear-down enters fifth month

SAVANNAH, Ga. — When salvage crews began cutting apart the capsized Golden Ray, a shipwreck the size of a 70-story office building with 4,200 cars within its cargo decks, in early November they predicted the demolition could be wrapped up by New Year's Day.

Four months later, the job remains far from finished.

Both ends of the cargo ship have been cut away and carried off by barges in a pair of giant chunks. But roughly three-fourths of the vessel remains beached on its side off St. Simons Island on the Georgia coast, where the South Korean freighter overturned soon after leaving port Sept. 8, 2019.

"It's been nothing but problems out here," said Andy Jones, a St. Simons Island resident who heads to the wreck site in his small fishing boat most days to monitor the demolition and post updates to a YouTube channel. "It's a disappointingly slow pace."

Salvage experts decided more than a year ago that the Golden Ray, measuring

656 feet long, was too big to remove intact. They settled on a plan to carve the ship into eight massive chunks, each weighing up to 4,100 tons.

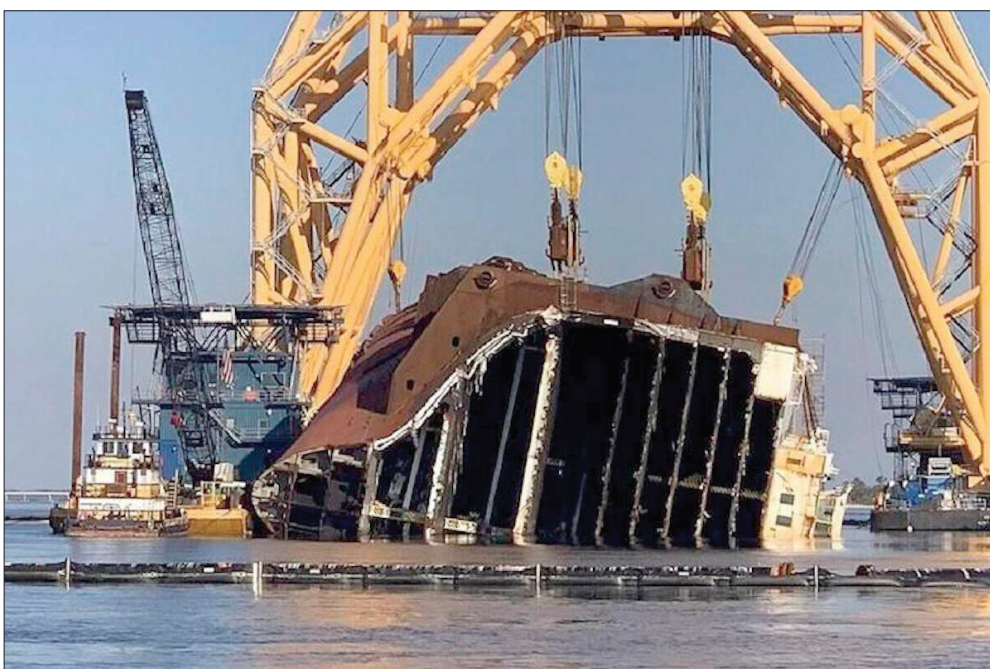
They straddled the wreck with a towering crane with a winch and pulley system attached to 400 feet of anchor chain that acts as a dull sawblade, tearing through the ship's hull with brute force.

Start-to-finish, each individual cut was supposed to take a single day. Taking into account time needed to load each severed ship section onto a barge and prepare for the next slice, the multi-agency command overseeing the effort predicted the job would take eight weeks.

It's turned out to be a lot harder.

The first cut began Nov. 6 and took three weeks. Lifting the ship's bow section revealed battered cars and SUVs in neat, layered rows on the interior decks. The second cut started a month later, on Christmas Day, and was finished in a week.

Crews spent the entire month of February attempting a third cut through the ship's engine



Farrell Lafont of Gallagher Marine Systems via AP

In this Feb. 25, 2021 photo, a towering crane straddles the capsized cargo ship Golden Ray, its interior decks exposed after the ship's bow was cut off and hauled away, off the coast of St. Simons Island, Georgia. The vessel has been beached on its side since it overturned Sept. 8, 2019, soon after leaving port.

room, a section fortified with thicker steel. After strain on the cutting apparatus forced extensive maintenance, the salvage crew stopped with the cut only half finished.

They spent days moving the crane to the other end of the ship, where they began cutting a new section May 7 while rethinking plans to complete the unfinished one.

The ship's steel has proven tougher than anticipated, slowing the process, and crews have taken pauses to perform extra inspections and maintenance, said Coast Guard Petty Officer 2nd Class Michael Himes, a spokesman for the multi-agency command overseeing the demolition.

"If people are wondering

when it is going to be done, we're doing it as quickly and as safely as can be done," Himes said. "But quick takes a back seat to safety."

He said it's possible the last chunk of the ship could head to the scrapyards by June, the first month of the Atlantic hurricane season. Workers have taken steps to make the cutting more

efficient, using torches to remove strips of the ship's hull plating and form a guide for the cutting chain. They're also using a big mechanical claw to pluck cars from inside the ship to shed weight before sections are cut and lifted.

Conservationists worry the longer the shipwreck stays in St. Simons Sound, the greater pollution threat it poses to the area's waterways, beaches and saltwater marshes.

The wreck site is surrounded by a mesh barrier intended to contain debris for cleanup once the big sections get removed. Boats equipped with skimmers and absorbent booms stay on standby to mop up any leaking oil or other pollutants.

Still, bumpers, tires and other car parts falling from the ship have been found on beaches. Birds have been found coated in oil. And though most fuel has been drained from the ship's tanks, there's concern that an estimated 44,000 gallons remaining could come gushing out once the cutting chain severs the ship's fuel line.

— The Associated Press

AccuWeather | Go to AccuWeather.com

# weather

<b>TONIGHT</b>	<b>WED</b>	<b>THU</b>	<b>FRI</b>	<b>SAT</b>
Mainly clear and cold	Plenty of clouds	A stray shower	Cooler with a few showers	Showers possible
<b>Baker City 27</b>	<b>60 39</b>	<b>64 40</b>	<b>56 30</b>	<b>52 27</b>
Comfort Index™ 6	9	10	4	4
<b>La Grande 27</b>	<b>60 40</b>	<b>63 38</b>	<b>50 31</b>	<b>50 27</b>
Comfort Index™ 4	10	10	2	4
<b>Enterprise 27</b>	<b>55 41</b>	<b>59 32</b>	<b>47 25</b>	<b>44 29</b>
Comfort Index™ 6	9	9	2	4

Comfort Index takes into account how the weather will feel based on a combination of factors. A rating of 10 feels very comfortable while a rating of 0 feels very uncomfortable.

### ALMANAC

<b>TEMPERATURES</b>	<b>Baker City</b>	<b>La Grande</b>	<b>Elgin</b>
High Sunday	63°	61°	59°
Low Sunday	22°	23°	24°
<b>PRECIPITATION (inches)</b>			
Sunday	0.00	Trace	0.00
Month to date	0.13	0.02	0.07
Normal month to date	0.35	0.64	1.02
Year to date	1.08	5.05	12.00
Normal year to date	1.73	3.41	6.52

### SUNDAY EXTREMES

NATION (for the 48 contiguous states)

High: 88° Jacksonville, Fla.  
Low: -13° West Yellowstone, Mont.  
Wettest: 3.52" Columbus, Neb.

OREGON

High: 64° Rome  
Low: 22° Crater Lake  
Wettest: 0.97" North Bend

### AGRICULTURAL INFO.

**HAY INFORMATION WEDNESDAY**

Lowest relative humidity	35%
Afternoon wind	SSE at 8 to 16 mph
Hours of sunshine	3.0
Evapotranspiration	0.09

**RESERVOIR STORAGE (through midnight Monday)**

Phillips Reservoir	11% of capacity
Unity Reservoir	54% of capacity
Owyhee Reservoir	53% of capacity
McKay Reservoir	66% of capacity
Wallowa Lake	46% of capacity
Thief Valley Reservoir	101% of capacity

**STREAM FLOWS (through midnight Sunday)**

Grande Ronde at Troy	3600 cfs
Thief Valley Reservoir near North Powder	105 cfs
Burnt River near Unity	37 cfs
Umatilla River near Gibbon	519 cfs
Minam River at Minam	239 cfs
Powder River near Richland	212 cfs

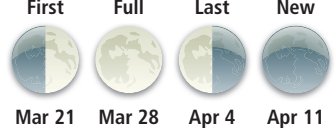
### WEATHER HISTORY

A storm on March 16, 1843, dumped heavy snow from the Mississippi Valley to New England. Little Rock, Ark., had 10 inches. Washington, D.C., and Philadelphia each had 10-12 inches.

### SUN & MOON

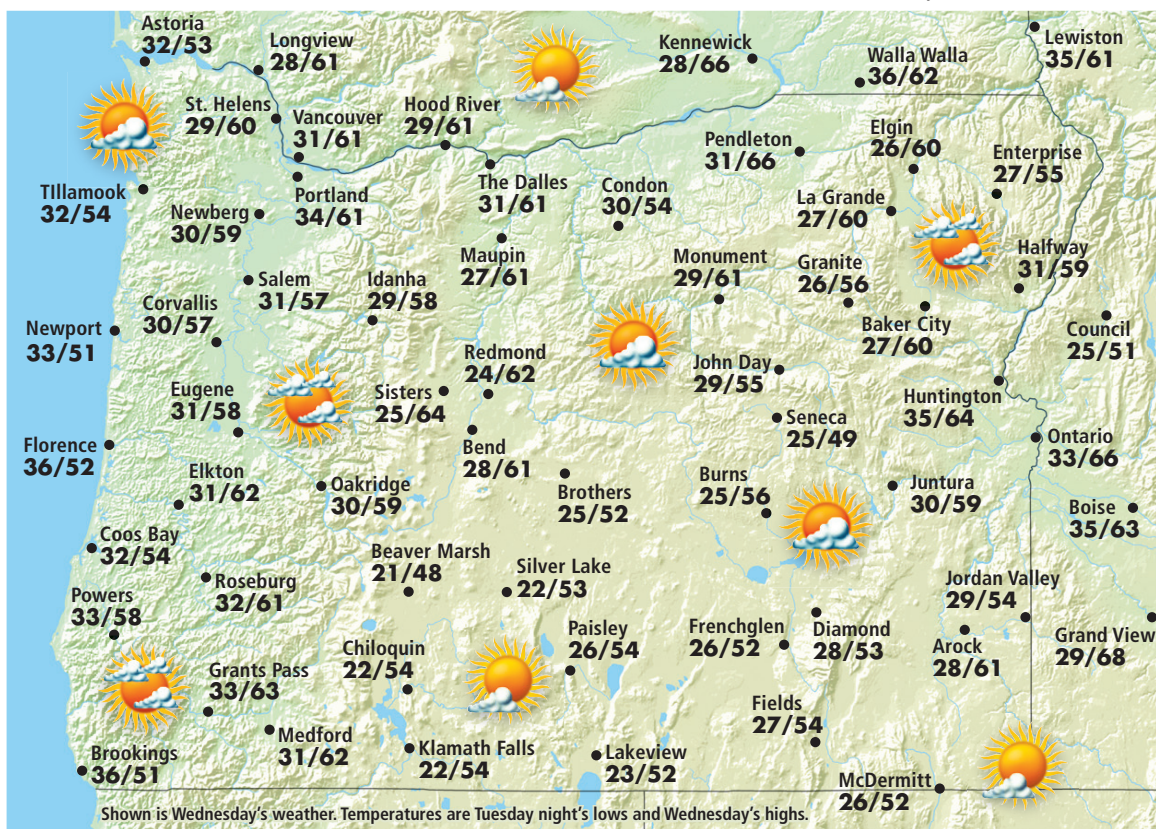
	<b>TUE.</b>	<b>WED.</b>
Sunrise	7:03 a.m.	7:01 a.m.
Sunset	7:00 p.m.	7:01 p.m.
Moonrise	8:43 a.m.	9:05 a.m.
Moonset	10:32 p.m.	11:36 p.m.

### MOON PHASES



## AROUND OREGON AND THE REGION

Forecasts and graphics provided by AccuWeather, Inc. ©2021



### REGIONAL CITIES

City	WED.		THU.	
	Hi/Low/W	Hi/Low/W	Hi/Low/W	Hi/Low/W
Astoria	53/40/c	52/42/r	Lewiston	61/43/pc
Bend	61/42/c	58/36/c	Longview	61/35/c
Boise	63/45/c	70/47/c	Meacham	60/39/c
Brookings	51/44/c	49/43/r	Medford	62/41/c
Burns	56/35/c	58/34/c	Newport	51/41/pc
Coos Bay	54/39/pc	50/42/r	Olympia	58/35/c
Corvallis	57/40/pc	51/41/r	Ontario	66/41/pc
Council Bluffs	51/33/pc	58/37/pc	Pasco	63/36/pc
Elgin	58/40/c	52/41/r	Pendleton	66/49/c
Eugene	58/40/c	52/41/r	Portland	61/43/c
Hermiston	67/40/pc	75/42/pc	Powers	58/40/pc
Hood River	61/38/c	64/36/r	Redmond	62/40/c
Imnaha	55/38/pc	59/39/pc	Roseburg	61/43/c
John Day	55/38/c	58/34/r	Salem	57/40/c
Joseph	54/41/pc	57/33/pc	Spokane	56/38/pc
Kennewick	66/34/pc	74/42/pc	The Dalles	61/38/c
Klamath Falls	54/32/c	49/28/c	Ukiah	60/43/c
Lakeview	52/29/c	51/33/c	Walla Walla	62/48/c

### RECREATION FORECAST WEDNESDAY

<b>ANTHONY LAKES</b>	Cloudy	<b>39 30</b>	<b>PHILLIPS LAKE</b>	Mostly cloudy	<b>57 36</b>
<b>MT. EMILY REC.</b>	Cloudy	<b>48 38</b>	<b>BROWNLEE RES.</b>	Becoming cloudy	<b>55 37</b>
<b>EAGLE CAP WILD.</b>	Mostly cloudy	<b>44 33</b>	<b>EMIGRANT ST. PARK</b>	Not as cool	<b>55 37</b>
<b>WALLOWA LAKE</b>	Becoming cloudy	<b>54 41</b>	<b>MCKAY RESERVOIR</b>	Turning cloudy	<b>66 50</b>
<b>THIEF VALLEY RES.</b>	Breezy in the p.m.	<b>60 39</b>	<b>RED BRIDGE ST. PARK</b>	Plenty of clouds	<b>60 40</b>

# SHOP & SAVE

Casual Sofa with Accent Pillows only **\$749**

Lay-Z-Boy Recliner **\$449**

6 Pc. Charcoal finished Dining Set **\$799**

**GLOBE furniture**

• Free Delivery • In-Store Credit • 70 Store Buying Power • Decorating Assistance

HOURS: Mon. - Fri. 9:30 am-6:30 pm  
Sat. 9:30 am-5:30 pm Sun. 12 noon-4 pm  
(541) 963-4144 • 888-449-2704

1520 ADAMS AVENUE  
La GRANDE, OREGON 97850