

DAILY PLANNER

TODAY

Today is Wednesday, May 29, the 149th day of 2019. There are 216 days left in the year.



TODAY'S HIGHLIGHT

On May 29, 1953, Mount Everest was conquered as Edmund Hillary of New Zealand and Tensing Norgay of Nepal became the first climbers to reach the summit.

ON THIS DATE

In 1765, Patrick Henry denounced the Stamp Act before Virginia's House of Burgesses.
 In 1790, Rhode Island became the 13th original colony to ratify the United States Constitution.
 In 1848, Wisconsin became the 30th state of the union.
 In 1914, the Canadian ocean liner RMS Empress of Ireland sank in the St. Lawrence River in eastern Quebec after colliding with the Norwegian cargo ship SS Storstad; of the 1,477 people on board the Empress of Ireland, 1,012 died. (The Storstad suffered only minor damage.)
 In 1917, the 35th president of the United States, John Fitzgerald Kennedy, was born in Brookline, Massachusetts.
 In 1932, World War I veterans began arriving in Washington to demand cash bonuses they weren't scheduled to receive until 1945.
 In 1954, English runner Diane Leather became the first woman to run a sub-five-minute mile, finishing in 4:59.6 during the Midland Championships in Birmingham.
 In 1977, Janet Guthrie became the first woman to race in the Indianapolis 500, finishing in 29th place (the winner was A.J. Foyt).

LOTTERY

Megabucks: \$2.8 million
4-5-16-31-33-45

Mega Millions: \$444 million
9-21-34-42-50-21-x2

Powerball: \$325 million
1-2-39-43-66-PB 2-x3

Win for Life: May 27
1-35-65-76

Pick 4:

- May 28
- 1 p.m.: 3-7-2-6
- 4 p.m.: 8-7-9-3
- 7 p.m.: 1-6-3-4
- 10 p.m.: 0-3-8-6
- May 27
- 1 p.m.: 0-1-9-4
- 4 p.m.: 7-0-7-1
- 7 p.m.: 4-3-2-1
- 10 p.m.: 7-6-1-0

ROAD REPORT

Numbers to call:
 • Inside Oregon: 800-977-6368.
 • Outside Oregon: 503-588-2941.

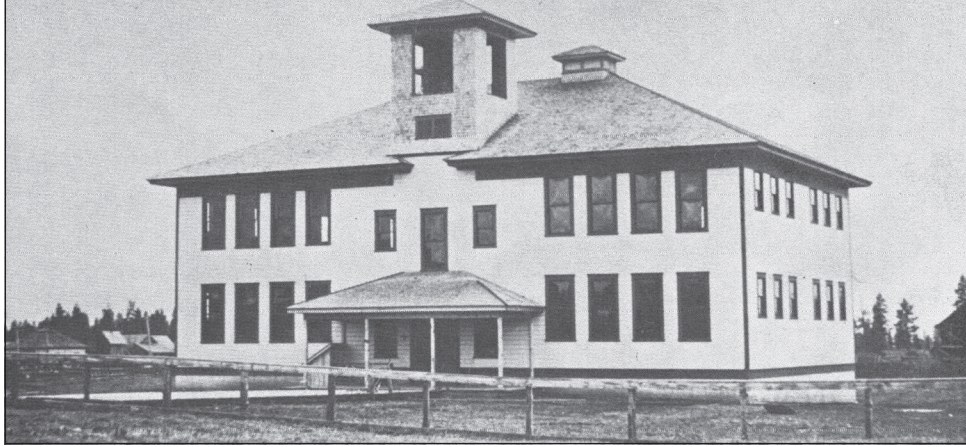
NEWSPAPER LATE?

Every effort is made to deliver your Observer in a timely manner. Occasionally conditions exist that make delivery more difficult.
If you are not on a motor route, delivery should be before 5:30 p.m. If you do not receive your paper please call 541-963-3161.

QUOTE OF THE DAY

"When we recall the past, we usually find that it is the simplest things — not the great occasions — that in retrospect give off the greatest glow of happiness."
 — British-born American comedian Bob Hope (born this date in 1903, died 2003)

Old-time arts celebrated in Flora



Courtesy photo

The Flora School is shown in 1915. Flora School Days, which focuses on demonstrating old-time skills, arts and more, takes place Saturday in Wallowa County.

Observer staff

Flora School Days, a celebration of old-time skills and arts, is happening this Saturday, June 1, in the tiny town of Flora, about 35 miles north of Enterprise on Highway 3. While the location is rural and about as out-of-the-way as you can get, the Flora School Education Center has volunteers and followers from all over the United States and the world.

The Flora School Education Center is a nonprofit organization that takes great joy in teaching and demonstrating to new and older generations the arts and skills that seem to be gradually disappearing. The center celebrates and demonstrates historic folks arts and agriculture at Flora School Days, held from 10 a.m. to 6 p.m. on the first Saturday in June.

School Days involves as many old-time arts and skills as can be gleaned from volunteers. Annual favorites include blacksmithing, soap-making, silversmithing, wool dyeing and spinning. Along with the folk artist and skills demonstrations, a pie social raises funds and a Dutch oven lunch provides plenty of food. The day also includes old-time music, a book sale, horseshoe and cornhole games, children's story time and possibly some sheep shearing.

Volunteers lead tours of the school and the historic town of Flora. The Country Store sells hand-made items, antiques and other treasures. Money earned from the food sales and Country Store and all donations go toward the ongoing restoration of the Flora School and keeping folk arts and historic agriculture alive, including offering classes throughout the year.

This year's festival features the second annual blacksmith competition and camp chili cookoff — and it's not too late to sign up.

Entries for these events are taken right up until start time Saturday. The blacksmith competition begins at 9:30 a.m. when forges can be officially lit. The chili cooking kicks off at 2 p.m.

Blacksmiths sign in at the judge's tent and pay the \$50 entry fee. Metal workers may use a gas forge or a coal forge but must bring their own fuel supply along with their own equipment. The school has a limited amount of equipment for rent. Metals for the competition are provided. Smithies must make tongs (cannot bring a pair to use) in order to complete the knife, spoon and fork set. The competition will last until 4 p.m., when hammers will stop.

While the judges go through the work provided by the smithies, there will be a "hammer-in," when the artists make whatever they like and answer questions from the viewers. First through third place will be awarded by the judges. The metal work done by the smithies will be used in future auctions at School Days, starting in 2020.

Chili cookers need to sign in and pay a \$5 fee for each chili entry. Beans are the only thing that can be cooked ahead of time and cannot be out of a can. The chili can be made using any kind of heat source that the cook provides. A wood cookstove is there for use, and the camp cook will keep it going for whomever wants to use it. Cooking carries on until all chilis are done or no later than 4:30 p.m., at which time the judging will begin.

Entries are judged by attendees of School Days. Each "judge" pays \$1 to receive a sample cup from each chili. The "People's Choice" cook will receive a hand forged spoon. Cooks may donate their chili to be sold after judging is complete.

The day concludes around 6 p.m. after a Quilts of Valor presentation, sculpture presentation and blacksmith and chili award ceremonies.

For more information on the event or the Flora School Education Center, go to www.floraschool.org or the center's Facebook page, email floraschool@tds.net or call the school at 541-828-7911 and leave a message. For specific questions regarding the blacksmith competition, contact Nathan Thompson at 509-876-7812. Sarah Thompson, at 509-876-1470, is the person to call about the chili cookoff.

OREGON IN BRIEF

From wire reports

Pendleton woman dies in crash

PENDLETON — The Umatilla County Sheriff's Office confirmed a 21-year-old Pendleton woman died in a crash near Pendleton. The sheriff's office at about 8:30 a.m. Tuesday responded to Mill Road near Hoeft Road near Pendleton for a single car rollover. Initial reports provided confusing information about the location, but deputies arrived and found a Chevrolet Malibu rolled over and the driver and only occupant of the vehicle was dead.

The sheriff's office did not release the name of the victim but stated the case remains under investigation to determine the cause and other factors in the crash. The sheriff's office also reported it would release more information as it becomes available.

Oregon man arraigned in disappearance of woman, young son

PORTLAND — An Oregon man arrested Friday in Portland following the disappearance of a Salem woman and their 3-year-old son has been arraigned and will be held without bail.

The Oregonian/OregonLive reports 52-year-old Michael Wolfe appeared in court Tuesday and will remain in the Yamhill County Jail.

Neither Karissa Fretwell nor William has been found,

but authorities believe they have probable cause to charge Wolfe with kidnapping and aggravated murder.

A probable cause affidavit filed Tuesday indicates Fretwell and Wolfe were together around the time Fretwell and William disappeared May 13.

Documents show Wolfe had recently been ordered to pay over \$900 a month in child support and that a babysitter told investigators that Wolfe and his wife had threatened to take custody of the boy.

Sheriff: Hikers find body of missing woman

GOLD BEACH — Authorities say hikers found the body of a Portland woman who had been reported missing. The Curry County Sheriff's Office said hikers called 911 Sunday to report a body in the water about 10 miles east of Brookings in Emily Creek off the Chetco River. Deputies and sheriff's search and rescue responded, finding the body submerged against a log.

The sheriff's office said authorities determined the victim was a woman in her 20s and using fingerprints later determined the body was that of Michella Craft. Deputies also found clothing and camping items nearby believed to belong to her. Her mother reported Craft missing May 17.

SUPPORT FOR FAMILY CAREGIVERS



If you're managing medications for an older adult, there's help.

Medication management can be complex but it is an important part of providing care for your loved one. You don't have to do it alone — Oregon Care Partners can help.

In our free, online or in-person classes, you'll learn:

- How medicines affect older adults, including risk factors, age-related changes and adverse medication side effects
- The importance of regular medication reviews
- How to manage medications for people living with dementia including the importance of non-medicine interventions

Visit OregonCarePartners.com to get started today. A little help can make a big difference — for your loved one, and for you.

Classes offered online and in-person at NO COST to you
 Funded through the State of Oregon

COMING SOON TO LA GRANDE

Safe Medication Use in Older Adults

June 11, 8:30am-12:30pm • Blue Mountain Conference Center

Learn more and register for this free class at OregonCarePartners.com. Family members, all levels of caregivers and walk-ins welcome. CEUs offered for professionals.



www.OregonCarePartners.com
 1-800-930-6851 • info@oregoncarepartners.com

La Grande Paint & Glass
 Quality Products & Services Since 1968
 601 Adams Ave., La Grande
 541-963-8671
LaGrandePaint.com

PPG PAINTS
PAINT & Proluxe
SAVE \$10/gallon
 on select items.
Now Through June 2

Valley INSURANCE
 1603 Washington Ave, La Grande
 Providing peace of mind one household at a time

Home Auto Life Health Business

- Life
- Health
- Medicare
- Home
- Auto
- Farm

Ph: (541) 963-3121