

AGING is ONE reason there's no place like SAFEWAY for MEAT!



Only PROPER AGING can bring beef to succulent, mouth-watering perfection. To do this, we have our own climate-controlled meat plant, with huge aging rooms where beef is slow-aged just the right number of days to develop peak goodness.

ONLY "U.S.D.A. CHOICE" BEEF is fine enough for Safeway steak. Every beef cut we offer is of this superior quality. To grade U.S. Choice, beef has to have all the good-eating qualities required by federal government standards.

And look at the TRIM on a Safeway Steak T-Bone, for example. Note that you pay for just the real tender, juicy center portion of the steak. The long "tail" section which is not true Steak meat is cut off before weighing, as is the excess fat and bone.



PERFECT EATING GUARANTEED — Every cut of fine Safeway meat is unconditionally guaranteed. Take home any cut you choose... cook it your favorite way. Savor its tender, juicy goodness. If you don't agree it's absolutely delicious in every way, just come in and tell us. Your money will be courteously refunded.

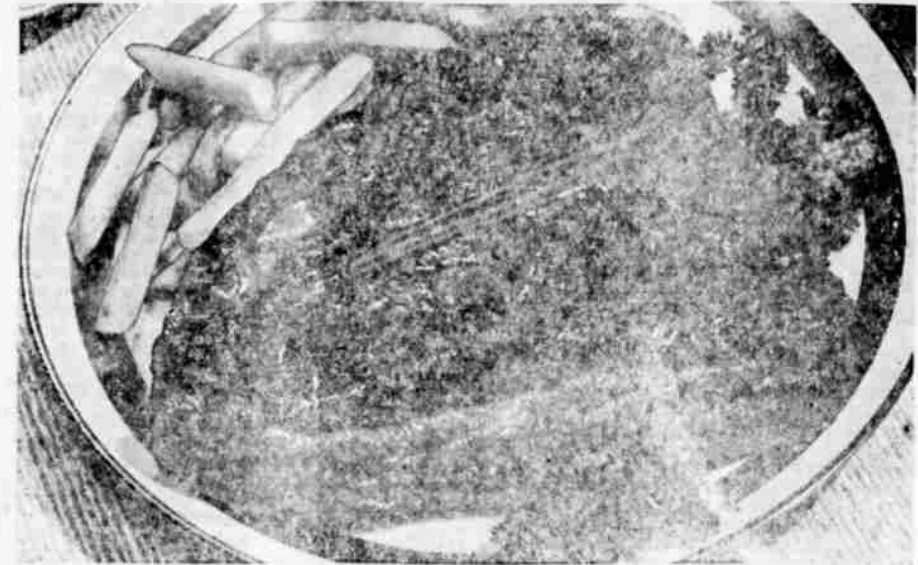
The combination of things we do makes Safeway Steak a better buy for you!

U.S.D.A. CHOICE

T-Bone Steak

lb. **98^c**

Our juicy T-Bone steak does magic every time you serve it. That's because it's perfect every time you buy it! Always the finest "U.S.D.A. CHOICE" trimmed in the famous Safeway style that trims off the less tender, "tail" along with excess waste and fat... leaving the exquisitely tender, flavorful portion to enjoy. You get more meat to eat... at Safeway.



A really good steak (like Safeway's) offers eating thrills galore! Serve it with crisp, golden french fries... add a zesty tossed salad and... need we say more!

Top Sirloin

"U.S.D.A. CHOICE" BONELESS beef steak... all grand eating with no waste.

lb. **\$1.25**

Boiling Beef

"U.S.D.A. CHOICE" Beef. Flavorful plate cuts for grand economical casserole meals.

lb. **19^c**

Meat Pies

Manor House frozen chicken, turkey, beef and tuna pies. Heat 'n serve.

4 for \$1.00

Large Bologna

Special LOW price... by the piece. **39^c lb**

SAFEWAY'S 5c and 10c Produce Dept. Specials!

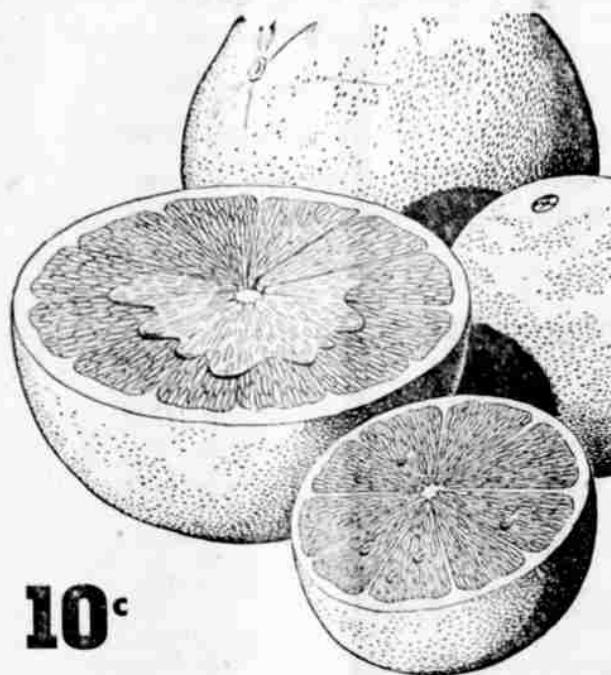
Grapefruit

TEXAS PINKS

Smooth, thin-skinned and loaded with sweet juice. A perfect way to start the day at breakfast time.

each

10^c



Apples Extra-fancy Rome. Perfect for baking. Crisp 'n juicy. lb. **10^c**

Squash Hubbard or Marblehead. Thick yellow meated. lb. **5^c**

Cabbage Locally grown, green, mild flavored. lb. **5^c**

Yellow Onions Medium size. lb. **5^c**

White Magic Cleaner NEW all-purpose liquid cleaner. It's great! 28 OZ. BTL. **63^c**

Liquid Aerowax Regular \$1.29. Shines and protects your floors. 1/2 gal. can **\$1.19**

BLEACH

White Magic Safe for Nylons—Gal. **49^c**

Purex Mild Bleach 1/2 gal. **35^c**

Deviled Ham

Underwood for sandwiches 2 2 1/4 oz. CANS **45^c**

Broiler Foil

Kaiser "It's Quilted" 20 FT. ROLL **49^c**

Scot Towels

Strong, absorbent GIANT ROLL **35^c**

Detergent

Liquid Wisk 16 OZ. CAN **45^c**

"All" Detergent

Super Rinse 10 LB. PKG. **\$2.79**

MODESS

Sanitary Napkins 2 PKGS. OF 12 **89^c**

Grape Jelly **49^c** or Grape Preserve. Regular 43c EMPRESS brand. Stock up and SAVE. 2 20 oz. jars

Bel-air Pies **39^c** Each Apple or Cherry... frozen and all ready to bake. The "big" 8 inch, 24 oz. pies... Regular 49c value.

Baby Food

GERBER'S All strained varieties of fruits and vegetables.

10 4 1/2 oz. cans **79^c**

More money-saving specials

Chunk Tuna Bumble Bee 4 No. 1/2 Cans **95c**

Cream Corn Del Monte Flavorful 6 No. 303 Cans **\$1.00**

Tomatoes Gardenside vine-ripened 7 No. 303 Cans **\$1.00**

Cherries Honeybird, for pies No. 2 Cans **87c**

Tissue Silk for the bathroom 12 rolls **\$1.00**



Prices in this advertisement are effective through Wednesday, December 2, at Safeway in La Grande. We reserve the right to limit.