

October's Prices Up On Farms

Oregon farm prices showed a mixed pattern of ups and downs in October and ended up with an average two per cent higher than a month ago, reports Mrs. Elvera Horrell, extension agricultural economist at Oregon State College.

At the same time, reports from the U. S. department of agriculture show prices received by farmers over the nation dropped seasonally in October to a point two per cent lower than last month and the lowest in nearly two years.

In Oregon, October egg and turkey prices moved up, and milk and milk cows also carried higher price tags. Feed grains and wheat climbed, and hay and potato prices also rose.

These gains in state farm prices were partially offset by lower prices on most meat animals and wool, broiler prices dropped for the second straight month, and corn prices turned lower.

Meanwhile, prices received by U.S. farmers fell to the lowest average in nearly two years. Cattle, hogs, corn, grapefruit, apples, and eggs all moved down. Higher prices on milk, fresh tomatoes, and wheat only partially offset the decline.

Prices the nation's farmers pay for goods and services also moved lower in October, but at a much slower rate, Mrs. Horrell found.

Farm wage rates were down, as were prices paid for farm production items. However, higher prices paid for things used in farm-family living offset these lower costs to some extent.

With prices received by farmers dropping faster than prices paid by farmers, the purchasing power of farm products slipped a little last month. The parity ratio—the government's yardstick for measuring the relationship between prices received and prices paid by farmers—fell to one point below September this year, six points below October 1958, and the lowest since August 1946.

But with corn, doublecross seed has been largely used because of the higher costs of singlecross seed. With alfalfa, however, seed yields from selected parents have been good. Thus, the singlecross is also being used experimentally.

With alfalfa, however, seed yields from selected parents have been good. Thus, the singlecross is also being used experimentally. With alfalfa, however, seed yields from selected parents have been good.

With alfalfa, however, seed yields from selected parents have been good. Thus, the singlecross is also being used experimentally.

With alfalfa, however, seed yields from selected parents have been good. Thus, the singlecross is also being used experimentally.

Valley Farm-Ranch-Home

Bill Bebout, Editor



PRIZE BEEF—First animal to go on the auction block at Grand National Livestock Exposition at the Cow Palace in San Francisco, Calif. was "Tim Topper," a 1000-pound Hereford, Grand Champion Fat Steer of the show.

Among Valley Farmers

Among Valley Farmers By County Agents Ted Sidor and Charles Gavin. An alfalfa breeding method being tried is called the doublecross. It involves four parents and resembles hybrid corn production methods.

Horticulture Society Sets Annual Session

Horticulture Society Sets Annual Session. Two nationally-known speakers will keynote the Oregon State Horticultural Society's 74th annual meeting, Nov. 19 and 20, at Oregon State College.

Among Valley Farmers (continued). Cattle on farms in Australia on March 1, 1959, were estimated at 16,277,000 head, about 4 per cent below the same date in 1958.

Horticulture Society Sets Annual Session (continued). Thursday afternoon's general assembly will feature a discussion on marketing by OSC agricultural economists, H. F. Hollands, G. E. Korzari and G. B. Wood.

Among Valley Farmers (continued). Top quality purebred bred ewes lambs will be offered at the second annual Bred Ewe Sale at the Polk county fairgrounds located at Rickfall, Oregon, tomorrow.

Horticulture Society Sets Annual Session (continued). Most of the meeting is divided into four sections of growers of vegetable crops, apples and pears, stone fruits, and small fruits to discuss their special interests.

Among Valley Farmers (continued). An outstanding ram will pay for itself within a year by producing above average lambs, reports Dr. Ralph Bogart, animal husbandman at the Oregon State College agricultural experiment station.

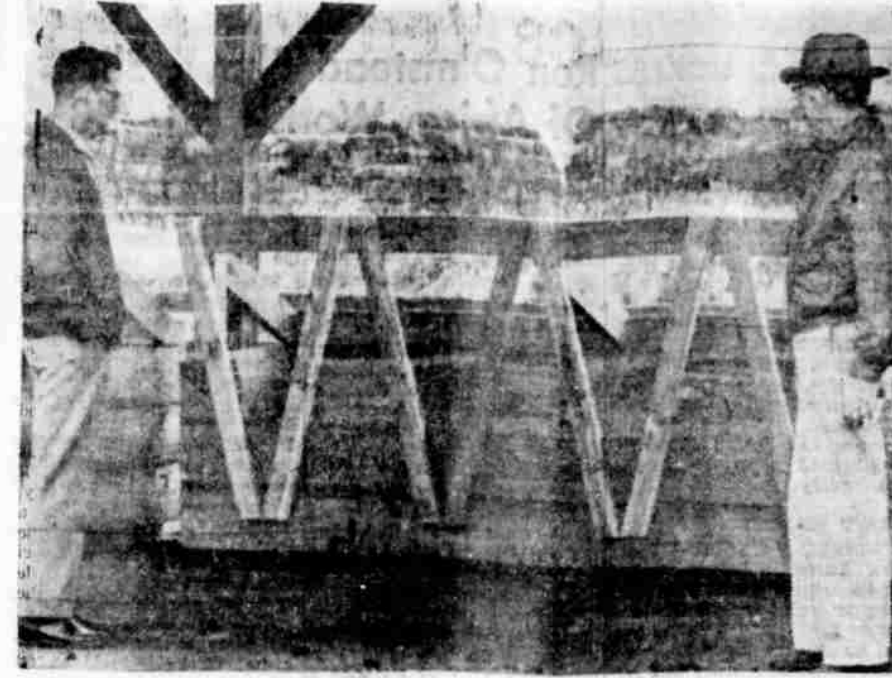
Horticulture Society Sets Annual Session (continued). Thursday evening the Mary Alice Circle met at the home of Mrs. Verdo Baird. Twelve were present. Mrs. Kenneth Running was assistant hostess.

Among Valley Farmers (continued). October precipitation at Wallowa 1.88 inches. WALLOWA (Special) — October weather observations show a precipitation during the month of 1.88 inches.

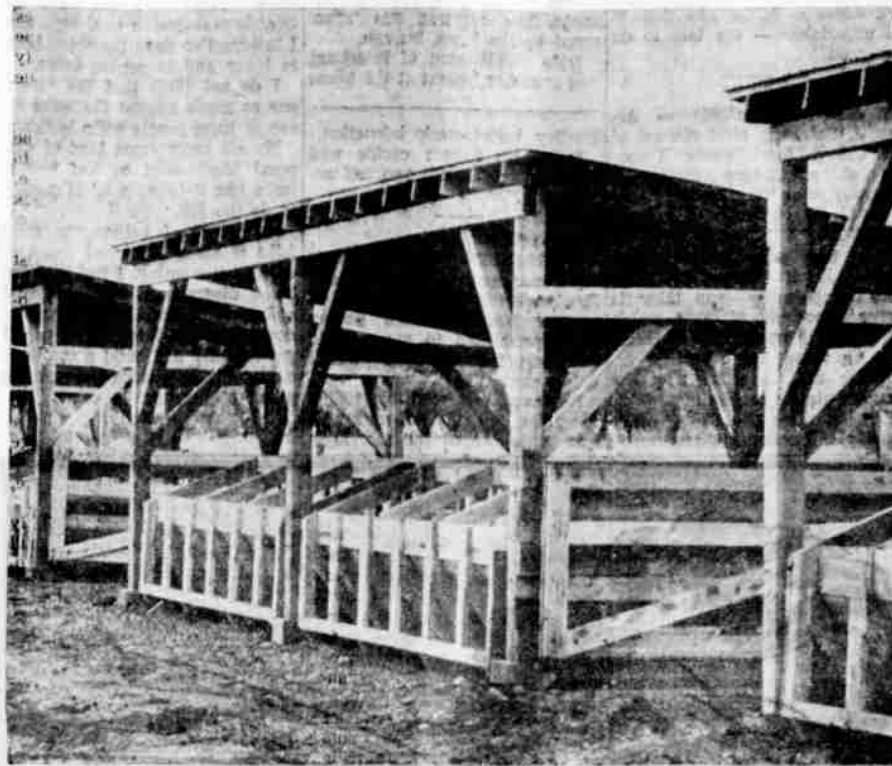
Horticulture Society Sets Annual Session (continued). Help comes fast too. We give our claims experts the authority to settle your claim "on the spot" in many cases.

Among Valley Farmers (continued). FARM PRODUCERS Better Industrial Equipment for. A.M. SPRINKLER IRRIGATION SYSTEMS. RAINBIRD SPRINKLERS.

Horticulture Society Sets Annual Session (continued). Why not get all the facts from your Allstate Agent today. Quality protection for your family, home and car.



NEW FEEDERS CONSTRUCTED—Dr. J. A. B. McArthur, right, and Ted Sidor inspect new construction at the Eastern Oregon Experiment Station at Union.



READY FOR OPERATION—New feeders have been built at the Experiment Station at Union and are now being used for the feeding of replacement heifers.

Plastic Tags For Oregon's Cattle In Use

Small plastic tags which Oregon cattle will carry from county brand inspection points or auction markets to the slaughterhouse—whether it be in Oregon, Colorado, California or some other western state—are now being applied by the state's brand inspectors.

The tags will be glued on the left shoulder of all dry and cull cows. They tell where the animals originated and are the key to the new simplified method of re-certifying counties and state for brucellosis.

Presence of the tag is a signal to blood test for brucellosis whenever the animal is slaughtered. Blood samples will be sent to the State-Federal Brucellosis Laboratory at Salem and submitted the agglutination test.

Department representatives will place tags only on dry and cull cows. In saleyards, tags will be placed as the cows first come into the yard and this will be done quickly so it will not slow the fast moving operations.

JEAN WICK CONGRATULATED 4-H Achievement Party Is Saturday At Island City

By JIM HUBER Union County Agent. The Union County 4-H Achievement Party will be held at the Island City Farm Bureau Hall Saturday at 7:30 p.m.

Our compliments to Jean Wick for being named sectional winner in 4-H Forestry and a trip to National 4-H Club Congress.

We are pleased to have Mrs. Edwin Lampkins join our 4-H leader ranks and we think that she will be a real community leader and help us establish several clubs in the Imbler-Summerville community.

Achievement programs will be completed this week with events being scheduled at Union, Cove and Imbler. PTA's at Union and Imbler will sponsor these events.

"Service With A Smile" STONE'S UNION 76. ON HIWAY 30 EAST ACROSS FROM BLUE MTN. BOWLING SALON. Pickup & Delivery Within City Limits At No Extra Charge!

Bulls Net Top Prices At Sale In Enterprise

Calf voted grand champion at the Wallowa County Bull Calf Sale was a polled bull consigned by Wolfe Hereford Ranch and sold to Emmett Weatherman for \$325.00.

Top quality purebred bred ewes lambs will be offered at the second annual Bred Ewe Sale at the Polk county fairgrounds located at Rickfall, Oregon, tomorrow.

An outstanding ram will pay for itself within a year by producing above average lambs, reports Dr. Ralph Bogart, animal husbandman at the Oregon State College agricultural experiment station.

October precipitation at Wallowa 1.88 inches. WALLOWA (Special) — October weather observations show a precipitation during the month of 1.88 inches.

Get NEW ADMIRAL APPLIANCES & FURNITURE for Prices As LOW AS USED. La Grande FURNITURE Warehouse East Adams Ave.

FARM PRODUCERS Better Industrial Equipment for. A.M. SPRINKLER IRRIGATION SYSTEMS. RAINBIRD SPRINKLERS. Atlas Workshop POWER TOOLS.

"On the spot" claim service

Allstate claims men have the authority to write claim checks themselves... Your claim is settled "on the spot" in many cases, with no home office red tape.

Help comes fast too. We give our claims experts the authority to settle your claim "on the spot" in many cases. Isn't this the kind of service you'd like to get from your auto insurance? You can... if the name on your policy is Allstate.

ALLSTATE INSURANCE COMPANIES. P.O. Box 677, Observer Building, La Grande, Oregon, Phone: WO 3-2203. You're in good hands with ALLSTATE.