

# Albertson's

food centers



## READY-TO-EAT PICNICS

### SWEET POTATOES

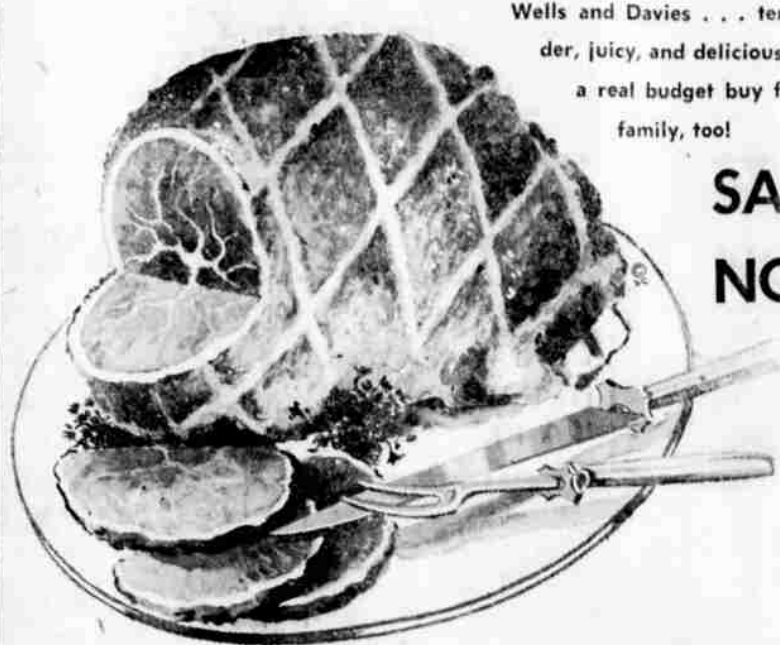
Mellow, sweet, and delicious!

2 lbs. for just **29c**

---

**DELICIOUS APPLES** Real beauties! 4 lbs. for **49c**

**SUNKIST ORANGES** Sweet... juicy! 2 lbs. for **29c**



Wells and Davies . . . tender, juicy, and delicious . . . a real budget buy for your family, too!

**SAVE NOW!**

**39c** LB.

### T.V. DINNERS

SWANSON'S FROZEN!

YOUR CHOICE OF MANY DELICIOUS VARIETIES . . . COMPLETE WELL-BALANCED DINNERS . . . EACH . . .

# 59c

### Fresh PICNICS

All good meat, and economical, too! . . . LB. **33c**

Fresh Pork **Shoulder Steak** . . . lb. **39c**

### BACON

Carston's sliced . . . crisp, hearty.

1 1/2 lbs. for **69c**

### SAUSAGE

Whole hog . . . tasty . . . good buy. lb. just . . . **49c**

### ORANGE JUICE

Old South Flavor-Fresh! . . . 5 6-oz. Cans **\$1.00**

### FROZEN CUT CORN

Flav-R-Pac tender, succulent! 7 pkgs. for **\$1.00**

### FLOUR

Occident . . . for all baking. . . 25 LBS. FOR **\$1.79**

### SPRY

Pure vegetable shortening. . . 3 LB. TIN **75c**

### PEACHES

Grandview . . . lush, sweet. . . 4 No. 2 1/2 Cans **\$1.00**

### SALMON

Bonfire brand . . . in the TALL can, just . . . **59c**



### BLANKETS

Luxurious rayon-nylon blend . . . 72"x90" size . . . warm, washable . . . just . . . **3.49**

### SHOES

Ripple sole oxfords . . . boys' sizes, pr. . . **\$2.29**

Ripple sole oxfords for men . . . pr. . . **\$2.98**

## DUTCH APPLE PIES

These are really special . . . flaky-crispy crust . . . sweet-spicy-apple filling . . . and wonderful crunchy streusel topping!

# 49c

EACH . . .

### COTTAGE CHEESE

2 lb. carton Meadow Gold **49c**

### CAKE MIXES

3 pkgs. Pillsbury's **89c**

### RYE BREADS

Pumpernickel, Bohemian, American . . . big loaf, just . . . **27c**

### ASSORTED CANNED VEGETABLES

All your favorites good buy! . . . 8 CANS FOR **\$1.00**

### NORTHERN SOFT TOILET TISSUE

Northern is nicer! . . . 12 ROLLS FOR **\$1.00**

## Albertson's

FOLKS LOVE OUR LOW PRICES!

Open **8 to 9 DAILY!**

BLUE PLATE SHRIMP med. **55c**

LIQUID TREND 2 CANS **59c**

SOFT-WEVE TOILET TISSUE 4 Rolls **45c**

FLUFFO 3 -LB. CAN **85c**

MAZOLA OIL **63c**

MR. CLEAN 28-oz. **75c**

CARNATION CANNED MILK 3 cans **49c**

SPECIAL MORNING MILK 3 cans **49c**

SIMPLOT CORN 2 CANS **37c**

SUNNY JIM PEANUT BUTTER 9 oz. **39c**

KARO SYRUP 1 1/2 lb. **29c**

Palmolive Soap Bath Regular 2/35c 3/35c

DREFT Giant . . . **89c**

SUNSHINE Krispy Crackers 2 lb. box **55c**

GIANT AD **95c**

PURITY SUGAR DOODLES 32 count **39c**

SURF Lg. . . . **39c**

POWDER ROOM TOILET TISSUE 4 Rolls **63c**

LIQUID LUX 22-oz. **75c**