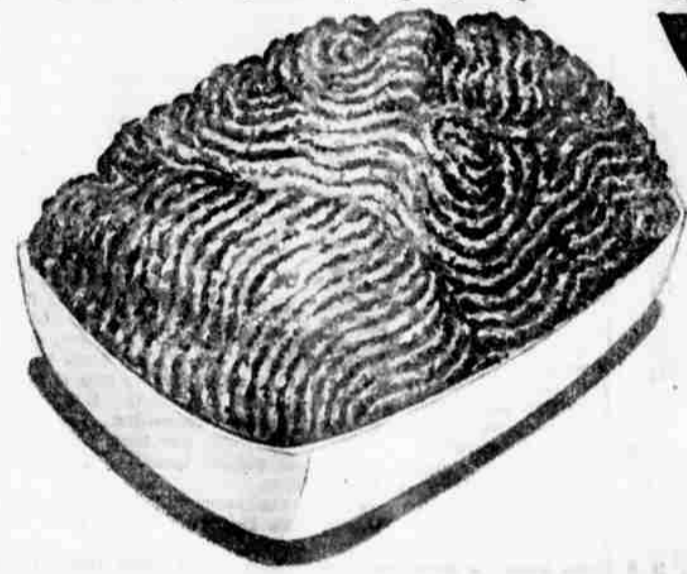


Albertson's 1ST OF THE WEEK VALUE SMASH!

GROUND BEEF

Pure beef... juicy, flavorful, and FRESH! As a matter of fact, it's ground fresh hourly! Economical, too!

49^c lb.



Northern
TISSUE

12^{\$} rolls



MEADOW GOLD COTTAGE CHEESE

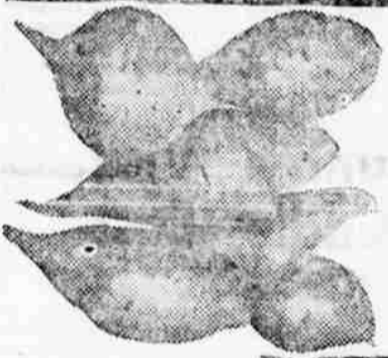
Always creamery-fresh... delicious just as is, or in low-calorie salads... enjoy it often!

2 lb. 59^c
CARTON

CHEESE SLICES
Kraft's Deluxe Slices... smooth, rich, tasty!
3 Pkgs. \$1

BEEF SAUSAGE
Really hearty... mighty good with hot cakes or eggs.
4 Lbs. \$1

CANNED HAM
Hormel's tender, sweet meat.
9 lb. can \$7⁴⁹



YAMS
Mellow, sweet, and firm... delicious with butter 'n brown sugar.

2 lbs. 29^c

CRANBERRIES
29^c LB.

Tart, sweet, perfect with all meals.

ENDIVE and ROMAINE
2 bunches 29^c

FRESH FROZEN FOODS

ORANGE JUICE
Old South... from select, sweet, juicy oranges... it's concentrated sunshine... in 6-oz. cans.

5 CANS FOR \$1

FLAV-R-PAC CUT CORN Flavor-Fresh... **7 PKGS. FOR \$1.00**

SWANSON TV DINNERS Your favorites... **59^c**

FRESHER BAKERY PRODUCTS

LEMON MERINGUE PIES
49^c

PILLSBURY CAKE MIXES
3 BOXES 89^c

FLOUR Occident... smooth blending, all purpose. **25 lbs. for 1.79**

SPRY Light, fluffy vegetable shortening for light bakery! **3 lb. tin 75^c**

SALMON Bonfire... flavor-rich, protein-rich... in the tall can, just... **59^c**

VEGETABLES Assorted... your favorites **8 cans for \$1**

SOUR DOUGH FRENCH BREAD
Fresh baked... wonderful with spaghetti, pizza!
29^c LOAF

Albertson's
OPEN 8 TO 9 DAILY!

WE WILL BE CLOSED
VETERANS' DAY, NOV. 11TH