



**PROUD OWNERS**—Reid Taylor, left, and Duane Fleet, center, jointly own the Hereford bull shown above. The picture was taken on the Duane Fleet farm during the Hereford tour last Tuesday. Chuck Gavin, county extension agent, is on the right.

## Valley Farm-Ranch-Home

Bill Bebout, Editor

## Important Changes For 1960 Soil Bank Program Explained

Two important changes in the 1960 Conservation Reserve of the Soil Bank have been announced by the Union County Stabilization and Conservation Office.

Basic annual rates will be established by the same method used for the 1959 contracts and farmers now have until Oct. 9 to take the first step in applying for the 1960 program.

These changes have been made following enactment of a new law passed shortly before the recent adjournment of Congress and signed by the President Sept. 23.

The added time will enable farmers to study the new rate arrangement and determine the advisability of coming into the program.

The new law, according to Lloyd German of the ASC office, removes the legal requirement that the annual payment rate must depend on actual crop production during the period 1955-

1959 on the land placed in the reserve.

Many farmers regarded such rates as unfair because of the effect of drought and other natural disasters on crop yields during one or more of those years. Under the new law, basic annual rates for 1960 will be determined chiefly on the basis of the productivity and value of the land for agricultural purposes, just as they were for 1959.

The basic rate may not exceed 20 per cent of the value of the land offered and may not be higher than the basic annual rate that would have been established for the same farm in the 1959 program.

Another recent program change that may affect some farmers in this county permits a contract with a land owner where a tenant leaves a farm voluntarily and the owner finds it necessary to take over the operation.

Originally, a farm which was operated by a tenant or sharecropper in 1958 or 1959 could not be placed under a 1960 contract unless a tenant or sharecropper was designated to share in the payment.

The purpose of the Conservation Reserve program, German explained, is to bring about the withdrawal of cropland from production, helping to adjust total crop acreage more nearly in line with needs. Land placed in the reserve may not be cropped or grazed and must be protected with a conservation practice.

A basic per-acre rate is determined for each farmer who requests it. The farmer may offer land and apply for a contract at any figure below that basic rate. In case funds are insufficient to permit acceptance of all applications, priority in accepting offers will be based on the rate at which the farmer offers his land.

Farmers who have not previously requested a rate determination but now believe that the program will be of interest to them should visit the county ASC office as soon as possible to obtain full information, German said.

## Union County Homemakers To Attend Portland Meet

Five Union County homemakers will attend the National Home Demonstration Council meeting in Portland, Oct. 11 through 14. It will be the first such council held west of the Rockies in 23 years.

Mrs. Dran Puckett, Cove, director of district eight, will leave for Portland on Oct. 10 and will be joined by the other four homemakers on Oct. 12.

A total of 2,500 delegates, representing 1,500,000 homemakers, are expected to attend this year's meeting. Most of the four days will be devoted to work sessions in which the women will develop programs they can bring back for use in Union County clubs.

Attending from this area will be Mrs. Carl Stewart, Mrs. Wayne Jones, Mrs. Lyle Rogers and Mrs. Maurice Rogers. Mrs. Jones and Mrs. Lyle Rogers will be representing the county advisory committee of the Home Extension Service.

On Oct. 7 the women will go to Pendleton where they take part in training session in preparation for the Portland meeting.

Speakers will include Gov. Mark Hatfield, Congressman Edith Green, C. M. Ferguson, administrator, federal extension service, Washington, D.C., and Dr. Fred Kern, director of religious affairs in civil defense mobilization, Battle Creek, Mich.

Nearly 250 Oregon homemakers, official hostesses, are already serving on committees and other help is being enlisted, reports Mrs. E. E. Kilpatrick, Salem, Oregon's general convention chairman. Others serving as committee chairmen are Mrs. E. E. Hansell and Mrs. James Sampson Sr., Athena; Mrs. Riddell Lage and Mrs. George Tonn, Hood River; Mrs. Jack Bartlett, Brooks; Mrs. Henry Childs, Otis; and Mrs. W. G.

Wightman, Mabel.

Many homemakers have written to Oregon headquarters saying they plan to combine the NHDC meeting with family vacations. Seventy Maine homemakers are coming by bus; North Dakota delegates are coming on special tour; and a large number of Hawaiian homemakers will fly to the meeting. Some delegations have had reservations for three to four months at Portland hotels.

Our New Phone No. is  
**WO 3-5203**

**NICHOLS  
EQUIPMENT CO.**

Island City

## FARM PRODUCERS

WE HAVE THE

**Industrial Equipment You Need!**

**A.M. SPRINKLER  
IRRIGATION SYSTEMS**

**RAINBIRD SPRINKLERS**

**Atlas Workshop  
POWER TOOLS**

**Phillips Red Head  
Concrete Fasteners**

**Bolts—Chains—Steel  
Steel Cable**

**PACIFIC CENTRIFUGAL IRRIGATION PUMPS**

**Industrial Machinery**

and SUPPLY

1410 Adams



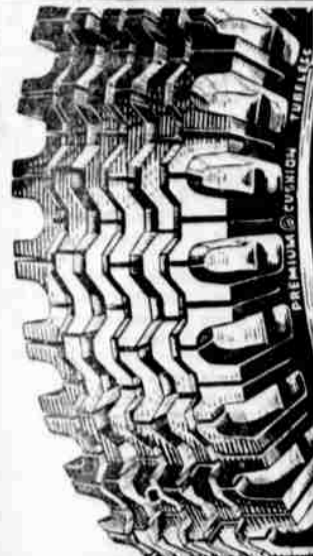
WO 3-4623

**UNICO**

**REDI-GRIP  
EXTRA TRACTION  
TIRES**

*Silent Running  
No Road Howl*

*Sure Starting  
No Skid—No  
Slipping*



**Sure, SAFE TRACTION through SNOW, MUD and  
all TOUGH WINTER ROAD CONDITIONS**

Unico REDI-GRIP is a new traction tire designed for passenger cars and light pick-up trucks.

It runs quietly — no rumble or bumping noise. Massive extra tread thickness digs in and goes over any rough road surface.

For SAFE, SURE winter traction — put on a pair of Redi-Grips. Choice of white side-wall, all black, tubed or tubeless.

**Check These  
PRICES**

**650x15 TUBE TYPE BLACK**

**REDI-GRIP**

**SUPER RAYON**

NOW

**\$21<sup>70</sup>**

PLUS  
TAX

Regular Price \$27.15

**710x15 TUBE TYPE BLACK**

**REDI-GRIP**

**SUPER RAYON**

NOW

**\$21<sup>44</sup>**

PLUS  
TAX

Regular Price \$26.80

**FREE MOUNTING AND BALANCING**

**Sale Starts Sat. Oct. 3 FOR LIMITED  
TIME ONLY**

**UNICO**

**POWERLINER  
Nylon Tires**

**670x15 Black Tubed**

Regular Price \$23.95

**NOW  
ONLY**

**\$19<sup>20</sup>**

**PLUS TAX**

**NO SECONDS  
NO REJECTS  
ALL NEW** FIRST  
LINE TIRES

**REAL DOWN-TO-EARTH  
VALUE**



For tractor, truck, implement or passenger car, UNICO TIRES are unique in offering you greater value for your tire dollars. There's one way to prove it. Put 'em on! Put 'em to work! The mileage records they run up will convince you that any UNICO TIRE is a far better than average buy.

**UNICO**

**FARM, TRUCK  
AND PASSENGER  
CAR TIRES**

**ALL TIRES ON SALE AT 20% OFF** REGULAR  
SELLING PRICE

**GOOD SELECTION AVAILABLE**

**Union County Grange Supply**

ISLAND CITY

WO 3-3411