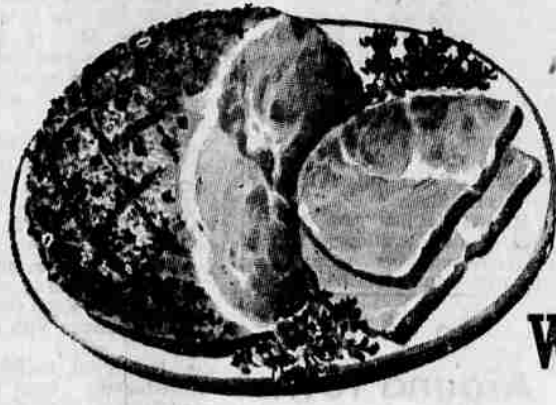




LOCAL SMOKED

HAMS

- TURKEY QUARTERS** A fourth of a big tender turkey! Lb. **49^c**
- SLICED HAM** Lean firm ham, sliced for convenience! Lb. **79^c**
- FRANKS** all-meat weiners! Extra-good! **2 Lbs. For 89^c**
- SAUSAGE** Pure, all-beef sausage, lean and fresh! **3 Lbs. For \$1⁰⁰**
- VELVEETA** The perfect, mild cheese-fool! **2 Lb. Loaf 79^c**
- OYSTERS** Sunpakt, ocean-fresh oysters, small & tender. **3 Cans For \$1⁰⁰**



HALF OR WHOLE!

Lb. 49^c

Tenderized hams . . . lean and smoked for tops in fine flavor! Economical, and so delicious, served hot or cold! Here's your chance to put ham away for many a fine feed!

VEGETABLES
Assorted canned vegetables for imaginative planning!
8 Cans For \$1⁰⁰

Mandarin Oranges
Sunpakt, fresh tender mandarin sections!
4 Cans For 89^c

FRESH FROZEN FOODS

- TV DINNERS** Swanson's complete dinners, chicken, beef or turkey! **59^c**
- BREADED SHRIMP** Treasure Chest, breaded and ready to deep-fry and serve! **2 Pkgs. For 83^c**
- ORANGE JUICE** Old South, fresh-frozen for fresh flavor **4 6-Oz. Cans 85^c**
- HI-WEST PEAS** Green, sweet peas, so tender and delicious. **8 10-Oz. Pkgs. \$1⁰⁰**

SALAD DRESSING
Salad Time . . . mild, tasty and smooth! Quart . . . **43^c**

COCOA MIX
Hershey's instant mix, for delicious rich cocoa, hot or cold! Mix with milk or water. Big 2 pound, 6 ounce box . . . **89^c**

- TOILET TISSUE** **12 Rolls Zee \$1⁰⁰**
- TOMATO JUICE** **4 46-Oz. Cans Libby's \$1⁰⁰**
- FRUIT COCKTAIL** **4 No. 303 Cans Libby's \$1⁰⁰**
- TROPI-CAL PUNCH** **3 46-Oz. Cans Libby's \$1⁰⁰**
- PIE MIX** Boston Cream, by Betty Crocker for mighty fine eating! **3 Boxes Just \$1⁰⁰**

DETERGENT
GIANT SIZE
59^c
For economical laundry, whiter & brighter than ever before! Try it!



FRESHER BAKERY PRODUCTS
COMBINATION SPECIAL!
1 . . . DUTCH GIRL CRUST PIE
1 . . . LOAF BUTTER-TOP BREAD
6 . . . ASSORTED DANISH ROLLS
They are all yours . . . all "Hours Fresher" to you from our own Dutch Girl ovens!
ALL FOR ONLY 99^c

ICE CREAM
Happy Time Assorted Flavors
Take your pick of tops in flavors! Buy them in the economical half gallon pack!
1/2 gal. . . 59^c

Large Crisp HEAD LETTUCE
2 HEADS 19^c

ASPARAGUS Fresh green tipped, so deliciously tender. **lb. 15^c**

CUCUMBERS Long firm slicers, perfect for pickling. **3 LONG ONES 25^c**



Open 9 to 9 everyday!

KIDS LOOK FOR THE SPECIAL
Post FUNA-RAMA PACKAGES
GAMES • TOYS • CUT-OUTS!
12-Oz. Post Toasties
9 1/2-Oz. Post Sugar Crisp
8 1/4-Oz. Alpha-Bits
SugarCoated Corn Flakes
4 for \$1

LIQUID CHIFFON 32-oz. 86^c	NORTHERN TOILET TISSUE 3 rolls 29c	STAR-KIST CHUNK TUNA 3 cans 1.00	WHITE KING DETERGENT king 71c	BLUE PLATE OYSTERS 8-oz. can 49c
AJAX CLEANSER giant . . . 25^c	NABISCO Premium Saltines 2 lb. box 55c	SUNSHINE Krispy Crackers 1 lb. box 29c	SURF Economy 77^c	DISHWASHER ALL 49^c
LIQUID VEL 22-oz. 66^c	DREFT giant . . . 87^c	ZEST SOAP Bath 2/39c Regular 2/31c	KINGSFORD CORN STARCH 17c	Planter's Cashews 6 3/4-oz. 59^c
HILLS BROTHER'S COFFEE 1 lb. can. 79^c 2 lb. can. \$1⁵⁷	BRADSHAW'S 3-BEAR HONEY 12-oz. 33^c 24-oz. 63^c	SIMPLOT CORN 2 cans 39^c		