

Society and Clubs

News and Activities
Engagements . . . Weddings
Social Events

Monday, March 26, 1945 Page 3

Society Briefs

Mrs. Jerry Kimmell and her daughter, Gerie Geanne Kimmell, are in La Grande visiting friends. The Kimmells, residents of La Grande for many years, are now residing in Portland.

Royal Neighbors To Meet Tonight

The Royal Neighbors of America will meet tonight at 7:30 o'clock in the IOOF hall. Mrs. Melba Metsker's team will be the hostesses and will serve refreshments.

State Leader Will Visit Eastern Star

Hope chapter, Order of Eastern Star, will meet at 8 p. m., Wednesday, in the lodge hall. Each member is asked to take a gift for a miscellaneous shower.

Altar Society To Meet Tonight

St. Mary's Altar society will meet at 7:30 o'clock tonight in the USO center to work on afghans for the veterans' hospitals. All Catholic women are invited to attend.

SEWING CLUB TO MEET

The Eagles auxiliary sewing club will meet at 2 p. m. Wednesday, in the lodge hall. Each member is asked to take a gift for a miscellaneous shower.

Social Calendar

- MONDAY**
7 p. m. Royal Neighbors of America, IOOF hall.
7:30 p. m. Union county historical society, Sacajawea hotel.
7:30 p. m. St. Mary's Altar society, USO center.
8 p. m. High school P.T.A. Dads' night, high school music room.
- TUESDAY**
6:30 p. m. Friendly club, Presbyterian church, potluck and program, church recreation rooms.
- WEDNESDAY**
2 p. m. Eagles auxiliary sewing club, lodge hall.
8 p. m. Hope chapter, OES, Masonic hall.

Mrs. Harry Cleaver Is Hostess to Art Research Group

Mrs. Harry Cleaver was hostess Saturday afternoon to members of Art Research, with Mrs. Glen Thompson as the program chairman.

Hope Comedus Produced in Color

"The Princess and the Pirate," starring Bob Hope and Virginia Mayo, showing currently at the Liberty theater, has as one of its highlights, elaborate settings and costumes, which are enhanced by technicolor.

Women of Union County Sought As WAC Technicians

(Continued from Page 1) al WACs to serve in the army hospitals, Maj. Gen. Norman T. Kirk, surgeon general of the army, said there is a critical need for WAC medical technicians due to the shortage of nurses, and that they must be recruited immediately to provide adequate care for 30,000 wounded service men who are being returned to the hospitals in the United States every month.

Hospital Notes

St. Joseph's hospital:
Admitted—Mrs. Albert Rose, Enterprise, Mrs. French Brooks, Paul Lamm, Wallowa, Carroll Perry, La Grande, Mrs. Marion Wagner, Summerville, medical; Alice Templeton, La Grande, x-ray; Sue Brock, La Grande, laboratory.

Red Army Cracks Austrian Defense

(Continued from Page 1) Nazi plans for a last stand in the Bavarian and Austrian Alps beyond Vienna.

Man's Church Views Are Divorce Subject

Betty Kilborn has filed suit for divorce from Barney Kilborn, on grounds of cruel and inhuman treatment.

WACs Sought As Technicians

(Continued from Page 1) The WAC recruiting service in Portland today announced the acceptance of Mrs. Beatrice Berry as the latest La Grande resident to enlist in the medical department of the corps.

Ruhr is Heart of Hitler's Fortress

War Industries Concentrated in Area Now Under Allied Attack

Perhaps the simplest way for an American to visualize the Ruhr basin is to imagine the war plants of Pittsburgh, Detroit, Cleveland and Youngstown crowded into an area of about 35 by 40 miles, along with those cities' transportation systems and the best coal mines of Pennsylvania and West Virginia.

Then he might run the Ohio river north and south along the western boundary of that area and place an enemy army on the opposite bank. He would then have a fair idea of the German state of mind as the American ninth and Canadian first armies advance toward the industrial heart of the embattled and dwindling reich.

Duesseldorf, shattered by allied bombs and American artillery, and Wesel, target of the Canadian drive, are the southern and northern Rhine gates to the Ruhr, site of one of the largest and best coal fields in Europe.

Between these cities lies the great inland port of Duisburg, and beyond are Oberhausen, Muelheim, the Krupp city of Essen, Gelsenkirchen, Dortmund, Hagen and Wuppertal, forming an almost unbroken chain of cities around the river in whose valley lies the best remaining source of Germany's industrial power.

The Ruhr's industrial history begins with Friedrich Krupp who, in 1815, turned out his first ingot of cast steel from a little forge in Essen. A century later Krupp's forge had become the world's greatest arms factory, employing more than 100,000 workers.

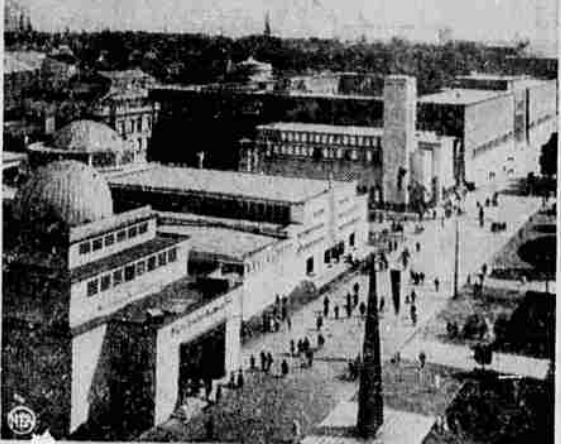
Ruhr is battlefield. Ruhr coal and ore made Krupp and Essen, and the surrounding cities. The Rhine and the canal from Dortmund to the Ems river and the North Sea brought Swedish and Spanish ore to their furnaces. These waterways and network of railroads carried Ruhr products all over Europe and the world.

The Ruhr has seen war before. Napoleon marched his armies in triumph through its towns. A short but bloody fight broke out when German communists seized the Essen factories in 1920. A year later the French moved in and took over to enforce their claims for defaulted war reparations.

The French occupation lasted three years, and was marked by both active and passive resistance. The allies who occupy the Ruhr this time will not find all of the industry that attracted the French here 24 years ago.

Whole factories have been evacuated eastward, and hidden underground or in forests. But Hitler can't move the coal mines, no matter how much of their product he may have stored away. And without them this war-making power is seriously weakened.

He needs the quantity of their output. When the war began the axis held 20 per cent of the world's coal. Conquest greatly increased these holdings. Now even the Silesian fields, Hitler's other sizable source of supply, are gone. All that remains of much importance are the mines



DUESSELDORF — modern industrial city of the Rhine.



ESSEN—capital of the Krupp munitions empire.

of northern Italy and the Ruhr. The loss of quality is equally important. The coaling properties of Ruhr coal were superior to anything else that Hitler held or acquired. But even if Hitler could still make steel without this superior fuel, he would be hard put to continue long without its other uses.

Tokyo Says U.S. Assault Opened On Okinawa Island

(Continued from Page 1) with a terrific air and naval bombardment that began Friday, Japanese broadcasts said.

The troops "attempted" to land from 100 invasion barges on Tokoshika and Aka, four and five miles respectively west of the southern end of the air-naval base island of Okinawa itself at 7:30 a. m. (Tokyo time) Sunday, Tokyo said.

Tokyo radio announced today a series of emergency measures have been instituted by the government in order to enable the Japanese people to defend their homeland in the event of possible invasion.

The measures included forcing men between 21 and 65 and women from 12 to 45 years of age to join a "people's volunteer corps." Members of the corps will not be armed like regular soldiers, Tokyo said, but will be trained in such a way so that they may be able to take up their posts immediately as defenders of the fatherland.

Members of the Japanese diet concluded their 36th session today with a strong rebuffing of an American invasion of the "sacred mainland."

Tadamiko Okada, speaker of the lower house, declared in an interview after the closing that it was earnestly desired that the government put into practice a powerful policy to surmount the national crisis.

The situation requires us to sit and think deeply to ponder the enemy's successes and his new undoubted attempts at invading our sacred mainland, Okada said.

Never before in history have we faced a (like) situation. The days ahead have no past precedent and we must find our own way out.

Tokyo, also, heard by United Press in San Francisco, said the diet expressed in behalf of the people a firm determination to repel any enemy attempt at invading the homeland.

Addressing the closing session of the house of representatives of the diet, Premier Tojo predicted that Japan will be turned into a battlefield. This, he added, would complete the structure in which we will be ready for any eventuality.

For coal was the chief source of Germany's synthetic oil, gasoline and rubber. And although loss of the rich prize of the Ruhr may not mean Germany's immediate defeat, it will number the days in which the Luftwaffe can fly and the panzers can roll.



Bouncing Baby—Influence of American India isn't entirely passe.

Mrs. Jesse B. Hubbard, Washington, D. C., carries 6-month-old son, Robert Oliver, through the shopping district a-la-napooee. Contrivance was built by a friend.



Man's Church Views Are Divorce Subject

Betty Kilborn has filed suit for divorce from Barney Kilborn, on grounds of cruel and inhuman treatment.

German Defenses Collapse Under Great Allied Drive

(Continued from Page 1) and found the city practically empty.

Other reliable quarters reported that some units of Patton's force had raced forward 80 miles by highway from the Rhine bridgehead to a point near Wuerzburg. That would represent a gain of 37 miles to the southeast from the last reported positions at Aeschaffenburg on the Main.

Wiesbaden Entered
Radio Paris said Patton's advance elements also penetrated to the outskirts of Wiesbaden, about five miles north of Mainz on the north bank of the Main river.

While the reports of the sensational Third army gains still lacked official confirmation they were in line with the free-swinging advance by Patton's tankers who had been running wild in the German rear ever since the hard crust of Nazi resistance was broken.

The exact location of the First army break-through was not immediately specified. A 22-mile advance would place the First army spearhead in a position to threaten or flank Li burg, 22 miles east of Coblenz.

Resistance Called "Spotty"
A report from the British Second army front said that if whole German Rhine defense system appeared to be collapsing. This correspondent said there were indications that the Germans had given up efforts to maintain a coherent defense system but were trying separately to contain the numerous allied bridgeheads.

Tonight, front dispatches from the northern end of the front reported, there are four separate British and two American Ninth army spearheads probing westward from the new West Rhine positions.

All along the line from north to south reports of German resistance were spotty. One battalion or company would encounter tough going while the units on its flanks would move ahead virtually unopposed.

The whole allied assault line was on the move into Germany's last-ditch defenses beyond the great Rhine barrier, advancing with gathering speed and power against an enemy apparently stunned by the greatest aerial bombardment in history.

U. S. Ninth army forces drove 12 miles beyond the Rhine on the southern wing of the four-army assault line to capture Gahlen, 3 1/2 miles west of Dorsten and less than 15 miles due north of the Ruhr city of Essen, Germany's largest war production center.

Front dispatches said the Americans had lost all contact with the fleeing enemy in that sector. Forward elements southwest of Gahlen were entering the suburbs of Duisburg and the fall of that great Ruhr city appeared imminent.

Front dispatches said the Americans had lost all contact with the fleeing enemy in that sector. Forward elements southwest of Gahlen were entering the suburbs of Duisburg and the fall of that great Ruhr city appeared imminent.

Front dispatches said the Americans had lost all contact with the fleeing enemy in that sector. Forward elements southwest of Gahlen were entering the suburbs of Duisburg and the fall of that great Ruhr city appeared imminent.

Front dispatches said the Americans had lost all contact with the fleeing enemy in that sector. Forward elements southwest of Gahlen were entering the suburbs of Duisburg and the fall of that great Ruhr city appeared imminent.

Front dispatches said the Americans had lost all contact with the fleeing enemy in that sector. Forward elements southwest of Gahlen were entering the suburbs of Duisburg and the fall of that great Ruhr city appeared imminent.

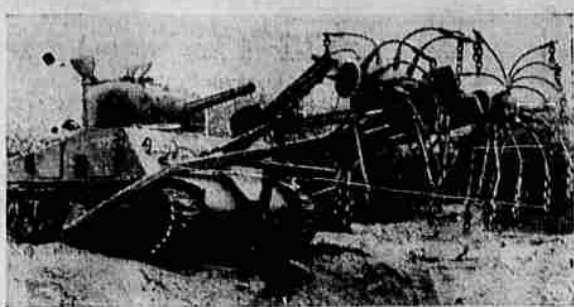
Front dispatches said the Americans had lost all contact with the fleeing enemy in that sector. Forward elements southwest of Gahlen were entering the suburbs of Duisburg and the fall of that great Ruhr city appeared imminent.

Front dispatches said the Americans had lost all contact with the fleeing enemy in that sector. Forward elements southwest of Gahlen were entering the suburbs of Duisburg and the fall of that great Ruhr city appeared imminent.

Front dispatches said the Americans had lost all contact with the fleeing enemy in that sector. Forward elements southwest of Gahlen were entering the suburbs of Duisburg and the fall of that great Ruhr city appeared imminent.

Front dispatches said the Americans had lost all contact with the fleeing enemy in that sector. Forward elements southwest of Gahlen were entering the suburbs of Duisburg and the fall of that great Ruhr city appeared imminent.

Front dispatches said the Americans had lost all contact with the fleeing enemy in that sector. Forward elements southwest of Gahlen were entering the suburbs of Duisburg and the fall of that great Ruhr city appeared imminent.



SEABEES MAKE A MINE-SPANKER—The spider-like attachment on the U. S. marine tank above, is the Seabees' answer to the peril of enemy-sown mines. Tubular hubs, from which chain-tipped flails hang, revolve rapidly, whirling the flails so they lash the ground, detonating contact mines which may be in the tank's path. They also set up an electrical field which explodes magnetic mines.

Women of Union County Sought As WAC Technicians

(Continued from Page 1) al WACs to serve in the army hospitals, Maj. Gen. Norman T. Kirk, surgeon general of the army, said there is a critical need for WAC medical technicians due to the shortage of nurses, and that they must be recruited immediately to provide adequate care for 30,000 wounded service men who are being returned to the hospitals in the United States every month.

Hospital Notes

St. Joseph's hospital:
Admitted—Mrs. Albert Rose, Enterprise, Mrs. French Brooks, Paul Lamm, Wallowa, Carroll Perry, La Grande, Mrs. Marion Wagner, Summerville, medical; Alice Templeton, La Grande, x-ray; Sue Brock, La Grande, laboratory.

Red Army Cracks Austrian Defense

(Continued from Page 1) Nazi plans for a last stand in the Bavarian and Austrian Alps beyond Vienna.

Man's Church Views Are Divorce Subject

Betty Kilborn has filed suit for divorce from Barney Kilborn, on grounds of cruel and inhuman treatment.

WACs Sought As Technicians

(Continued from Page 1) The WAC recruiting service in Portland today announced the acceptance of Mrs. Beatrice Berry as the latest La Grande resident to enlist in the medical department of the corps.

RATION CALENDAR

- Processed Foods:**
Book 4 — Blue stamps X5 through B2 valid through March 31. Blue stamps C2 through G2 valid through April 28. Blue stamps H2 through M2 valid through June 2. Blue stamps N2 through S2 valid through June 30.
- Meat, Butter, Fats, Cheese:**
Book 4 — Red stamps Q5 through S5 valid through March 31. Red stamps T5 through X7 through April 28. Red stamps Y5 through D2 valid through June 2. Red stamps E2 through J2 valid through June 30.
- Sugar:**
Book 4 — Sugar stamp 35 valid through June 2.
- Shoes: Loose stamps invalid.**
Book 2 — Airplane stamps 1-2-3 now invalid.
- Gasoline: Coupons not valid unless endorsed.**
"A" coupons expire June 21.
- Stoves:**
Apply local board for oil, gas stove certificates.
- Food, Coal, Sawdust:**
Delivery by priorities based on needs.
- Fuel Oil:**
Period 1-2-3-4-5 coupons valid through August 31. Not more than 75 per cent of season's rations should have been used to date.
- Waste Paper:**
Bundles of newspapers and magazines may be left at the storage depot, 1106 Jefferson ave.

GET YOUR KEM-TONE HERE.
MIRACLE WALL FINISH
BOHNENKAMP'S

Beware Coughs from common colds That Hang On
Creomulsion relieves promptly because it goes right to the seat of the trouble to help loosen and expel germ laden phlegm, and aid nature to soothe and heal raw, tender, inflamed bronchial mucous membranes. Tell your druggist to sell you a bottle of Creomulsion with the understanding you must like the way it quickly allays the cough or you are to have your money back.
CREOMULSION
for Coughs, Chest Colds, Bronchitis

This War is for Keeps!

GREYHOUND BUS DEPOT
H. A. Decker, Agent
Sacajawea Annex Phone 19

OVERLAND GREYHOUND LINES

COATS - SUITS DRESSES - SWEATERS SLACK SUITS - BLOUSES
Easter Togs that are new styles and better made at lower prices.
NORTON'S KIDDY SHOP
1114 Adams Phone 292

GET EXTRA RED POINTS FOR AN EXTRA CHOP!

WE are fighting this war so that we can have peace—but for just a little while—but for keeps! So let's all keep on our war jobs—keep on saving tin and paper—keep on buying War Bonds—to keep.

Ride on the buses if it will help win the war—that's our job. If it won't—please don't make non-essential trips.

Artistically designed fabrics by the famous Arthur Wulfschlegel fashioned with typical Young Viewpoint ingenuity to slim and flatter the slender woman of fuller proportions. \$19.75

14 Y to 24 Y and Y means Young
Exclusive with
Ann Johnson
"Correct Apparel for Women"

for Easter

ONE OF AMERICA'S FOREMOST FABRIC DESIGNERS

Arthur Wulfschlegel

makes a FINE ART of PRINTS

GET EXTRA RED POINTS FOR AN EXTRA CHOP!

Extra red points can help so much. Get 2 red points for each pound of used fats you turn in. Keep Saving Used Fats For the Fighting Fronts and Home Front.

YOUNG VIEWPOINT Fashion

IN 1/2 SIZES

"If you must wear men's sizes but won't wear women's styles!"

Artistically designed fabrics by the famous Arthur Wulfschlegel fashioned with typical Young Viewpoint ingenuity to slim and flatter the slender woman of fuller proportions. \$19.75

14 Y to 24 Y and Y means Young
Exclusive with
Ann Johnson
"Correct Apparel for Women"