

CLASSIFIED ADS

THE MARKET PLACE OF UNION & WALLOWA COUNTIES

(Count five average words to the line.)

Per-line, 1st insertion—10c
Per-line, each added consecutive insertion—7c
Minimum charge on one order—25c

RATES BY MONTH

2 lines, per month—\$2.50
3 lines, per month—\$3.25
4 lines, per month—\$4.00
5 lines, per month—\$4.75
Each additional line over five charged at 50c per line per month.

FOR SALE

PICKLING peaches, 50c apple box; bring box, 807 Penn. 8-18-34
PEARS—Monroe Orchards, Ph. Farm, 213. 8-17-34

AUTOMATIC Meyers electric household water pump, E. E. Coad, Cove, 8-17-34

NOTICE—New improved Baldwin built upright piano, walnut finish, now \$247.50. Terms, Radio & Music Supply Co. Ph. Main 805. 8-16-34

WHEAT, OATS and barley for sale by a farmer at farmer's price. Grinding \$1.00 per ton cash or toll, bring it sacked or bulk, take it home sacked or bulk. For sale or trade for grain 1-14 inch walking plow, 1-4 horse blade weeder, Arthur Hamann, Island City, Phone 490 J. 8-16-34

8 FT. REFRIGERATED case, A-1 condition. Also soda fountain, Imbler Cash Store. 6-29-34

SCATCH PAPER for school or home at the Observer, 2 pads for 5c. 8-14-34

FOR RENT

PURN. HOUSE in Island City, barn, garden spot, J. E. Reynolds, 499 W. 8-17-34

MISCELLANEOUS

RUBBISH, garbage, etc. picked up. Prompt service, reasonable prices. J. B. Garrett, phone 142 B. 8-17-34

WE WILL CLEAN UP your ashes, papers, etc. Good service, reasonable prices. G. E. Towery, Ph. 455 W. 4-20-34

WE BUY, SELL OR TRADE, The Dalles Furn. Store, A. A. Fidler, mgr. Ph. 685 J. 1-31-34

WANTED

2 PASS. to Portland Sun. Good bicycle for sale, 1707 Walnut. 8-17-34

FOR TRADE

80 ACRES, 2 mi. from Alamogordo, N. M. Clear. Trade for La Grande Property. Call at 1405-7th St. 8-17-34

LOST

WILL person who found lady's bathing suit at Crystal Plunge Thurs. p. m. call 408-W and receive reward. 8-18-34

TWO side curtains bet. Valeria school and La Grande. Call Main 92 or ret. to Herman's Lunch. 8-18-34

CAR key on chain, Fri. p. m. bet. R. R. track and Sac. on Fir St. Ret. to Observer. 8-18-34

Trade was erratic but little net change was shown. Best lambs \$5.00-5.50; bulk \$5.25; common to medium \$4.00-4.50; yearlings \$3.50-3.75; slaughter swine \$1.00-1.25.

PORTLAND PRODUCE
PORTLAND, Aug. 18 (AP)—Butter—Print, A grade, 28c; parchment wrapped cartons, 29c; quantity purchases 1/2 lb. less; B grade, parchment wrapped, 17 1/2c; do, cartons, 23 1/2c.

Butterfat—Portland delivery: A grade delivery at least twice weekly, 27-28c lb.; country routes, 25-26c lb.; B grade or delivery fewer than twice weekly, Portland 26-26c; country routes, 24-25c; C grade at market.

Eggs—Sales to retailers—Private firms: Specials, 20c; extras, 24c; extra fresh extras, brown, 23c; standards, 22c; fresh medium, 22c; medium firms, 20c; pullets, 16c; checks, 17-18c; bakers, 16c dozen. Buying price of wholesalers: fresh specials, 23c; extra, 24c; fresh extras, brown, 21c; standards, 20c; fresh medium, 18c; medium firms, 15c; pullets, 14c; checks, 14c; bakers, 14c dozen.

Sven Hedin, the explorer, is an artist as well.

ASTROLOGER
Mrs. Frederick Holmes
203 N. Ave. - Readings Daily

Astoria Legion Convention Will Draw Big Crowd

ASTORIA, Ore., Aug. 18 (AP)—Reservations for the state convention of the American Legion, to be held here from Aug. 23 to 26, now number 1400, the convention committee announced today.

About 750 delegates and visitors are to come by train, and four special trains already have been scheduled. One will come from The Dalles, another from Klamath Falls, a third from La Grande and Enterprise, and the other from the Medford-Ashland district.

These trains, all of which will start Aug. 22, will carry pullmans on which the visitors will be housed during the convention period.

The convention committee said that despite the heavy demand for housing accommodations, plenty of rooms are available in the city.

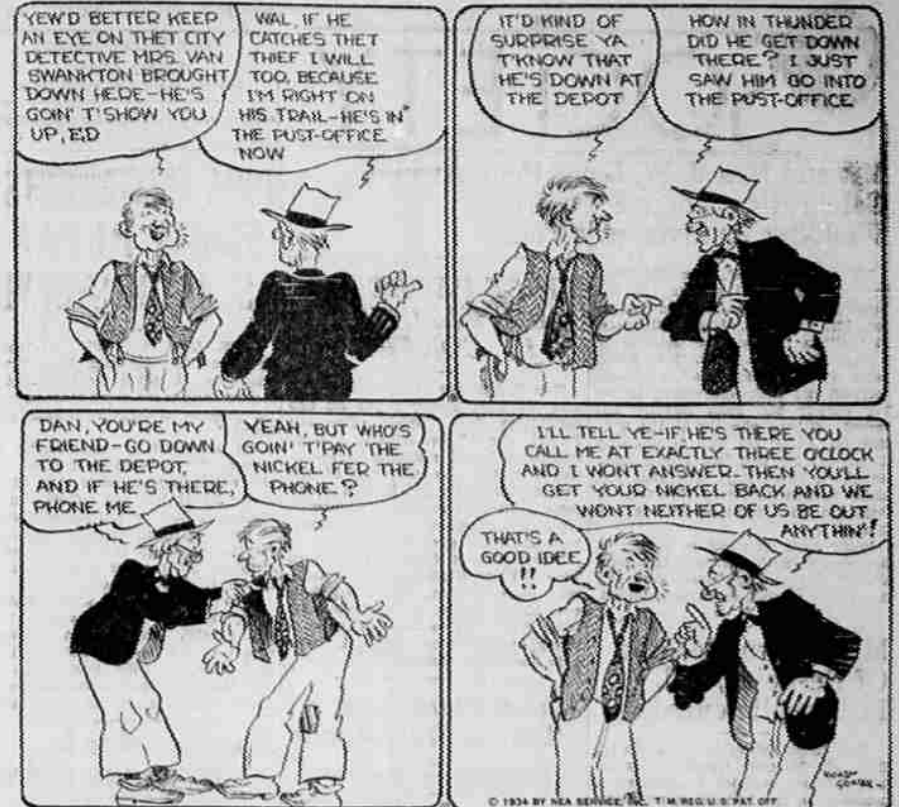
PORTLAND LIVESTOCK
PORTLAND, Ore., Aug. 18 (AP)—Cattle 3325 for week. Prices a trifle soft to lower in spots with a limited trade \$4.00-5.00; bulk \$3.25-4.25; top grassers \$5.25; heifers \$2.30-3.75; bulls \$2.50-3.25; good to choice vealers \$3.00-4.00.

Hogs 4200 for week. Prices were sharply higher, eclipsing high marks several years back. Bulk best light butchers topped \$6.50; packing sows \$3.75-4.25 and up; feeder pigs \$4.00-6.00. Sheep and lambs 4175 for week.

OUT OUR WAY



By J. R. Williams THE NEWFANGLES



SCORCHY SMITH



Fletcher Plays the Game



JOE PALOOKA



The Odds



FRECKLES AND HIS FRIENDS by Blosser Little Do They Know!



OLLY OF THE MOVIES by Ollendorff



—But DOES That Settle It?



DIANA DANE



The Law Layer Downer



THE DILLYS



Wild and Woolly

