

# FIRST TRAIN STEAMED INTO LA GRANDE 50 YEARS AGO

## Town Want Wild With Joy With Arrival of 1881 Locomotive

Fifty a century ago the first locomotive pulled steadily into La Grande and a town was wild with joy. This month the same town, with a striking inland city in shaping a portion of that celebration of July 4, 1881, fully commemorates the birthday that have been brought to these people and the world history by the coming of another locomotive.

It is to-day fifty to that early day. When, fifty the western locomotive into La Grande with the same train as before in the year 1881, the town is full of new spirit, excitement, and the first steps in development. The country has been been secured to them, and the town is full of a new spirit, excitement, and the first steps in development.

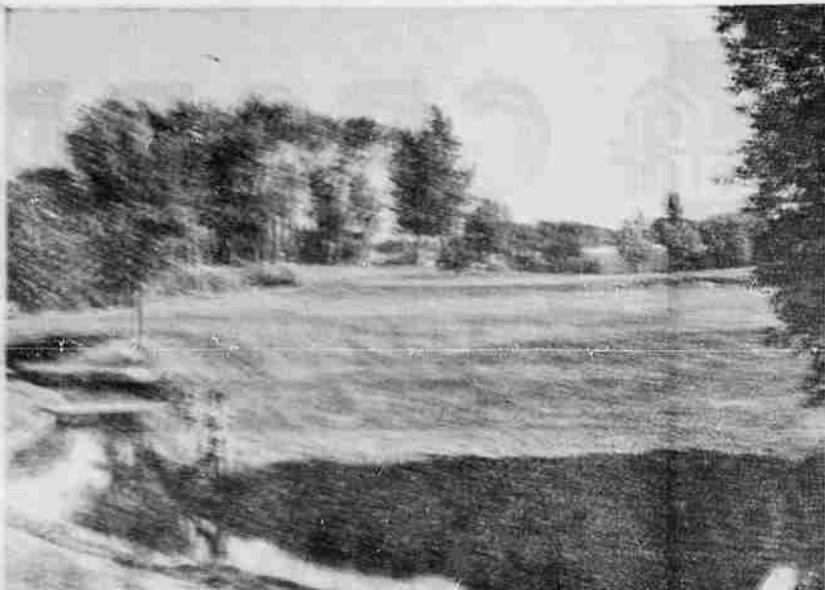
When, fifty the western locomotive pulled steadily into the town of La Grande, the town was wild with joy. This month the same town, with a striking inland city in shaping a portion of that celebration of July 4, 1881, fully commemorates the birthday that have been brought to these people and the world history by the coming of another locomotive.

When, fifty the western locomotive pulled steadily into the town of La Grande, the town was wild with joy. This month the same town, with a striking inland city in shaping a portion of that celebration of July 4, 1881, fully commemorates the birthday that have been brought to these people and the world history by the coming of another locomotive.

When, fifty the western locomotive pulled steadily into the town of La Grande, the town was wild with joy. This month the same town, with a striking inland city in shaping a portion of that celebration of July 4, 1881, fully commemorates the birthday that have been brought to these people and the world history by the coming of another locomotive.

When, fifty the western locomotive pulled steadily into the town of La Grande, the town was wild with joy. This month the same town, with a striking inland city in shaping a portion of that celebration of July 4, 1881, fully commemorates the birthday that have been brought to these people and the world history by the coming of another locomotive.

## GOLF TOURNAMENTS ARE SCHEDULED



Two tournaments will be played daily on the La Grande country club golf course, part of which is shown above today, the same date as the western union meeting of the Brotherhood of Locomotive Engineers, July 17, 18, 19, and during the three days of the Semi-Centennial U. S. celebration July 20, 21 and 22, 1931. The tournaments are open to all and visitors are particularly invited to play and to see the most interesting course here, which is unquestionably one of the finest courses between Salt Lake City and Victoria, B. C. Out-of-town players who wish to enter the tournaments must present their certified handicaps.

## UNION COUNTY ONE OF BEST AGRICULTURAL DISTRICTS

Union county ranks among the leading agricultural districts in Oregon. This is due to the fact that the county is one of the best in the state for the raising of stock, particularly cattle and horses. The county is also one of the best in the state for the raising of grain, particularly wheat and barley. The county is also one of the best in the state for the raising of fruit, particularly apples and peaches. The county is also one of the best in the state for the raising of vegetables, particularly carrots and turnips. The county is also one of the best in the state for the raising of poultry, particularly chickens and turkeys. The county is also one of the best in the state for the raising of bees, particularly honey bees. The county is also one of the best in the state for the raising of silkworms, particularly mulberry silkworms. The county is also one of the best in the state for the raising of fish, particularly salmon and trout. The county is also one of the best in the state for the raising of game, particularly deer and elk. The county is also one of the best in the state for the raising of furs, particularly beaver and mink. The county is also one of the best in the state for the raising of wool, particularly fine wool. The county is also one of the best in the state for the raising of leather, particularly cowhide and horsehide. The county is also one of the best in the state for the raising of hides, particularly cowhide and horsehide. The county is also one of the best in the state for the raising of bones, particularly cowbones and horsebones. The county is also one of the best in the state for the raising of horns, particularly cowhorns and horsehorns. The county is also one of the best in the state for the raising of hooves, particularly cowhooves and horsehooves. The county is also one of the best in the state for the raising of manure, particularly cowmanure and horsemanure. The county is also one of the best in the state for the raising of blood, particularly cowblood and horseblood. The county is also one of the best in the state for the raising of hair, particularly cowhair and horsehair. The county is also one of the best in the state for the raising of skin, particularly cowskin and horse skin. The county is also one of the best in the state for the raising of tallow, particularly cowtallow and horse tallow. The county is also one of the best in the state for the raising of grease, particularly cowgrease and horse grease. The county is also one of the best in the state for the raising of lard, particularly cowlard and horse lard. The county is also one of the best in the state for the raising of suet, particularly cowsuet and horse suet. The county is also one of the best in the state for the raising of tallow, particularly cowtallow and horse tallow. The county is also one of the best in the state for the raising of grease, particularly cowgrease and horse grease. The county is also one of the best in the state for the raising of lard, particularly cowlard and horse lard. The county is also one of the best in the state for the raising of suet, particularly cowsuet and horse suet.

Chief among the county's crops is wheat and this county is fourth largest wheat producer in Oregon, yet every farm does not raise this grain. The normal crop for the county is a million and a half bushels, and prospects this year are for a yield well over a million bushels in spite of a large amount of acreage idle because of government allotment checks and contracts.

Besides wheat, the county also has some 500 acres in corn, three-fourths annually around 7000 bushels of oats besides that cut and fed throughout, raises more than 5000 bushels of barley, more than 30,000 bushels of rye, and several other grains less prominent.

Hay is another real crop of the county, with the average crop running over 70,000 tons. These good crops of alfalfa yearly are counted on by farmers, and of the total yield of hay nearly 40,000 tons are of alfalfa.

Practically every type of small fruits and vegetables are raised here, particularly strawberries, carrots, cabbage, peaches, beans, asparagus, cauliflower, cucumbers, lettuce, onions, peas, radishes, squash and pumpkins, tomatoes, turnips, etc.

The county is noted for its fine potato crops, and every diversified farm depends for a part of its income on its yields. There are many averages quite large in extent over the county exclusively devoted to potato raising, with quite a bit of seed potato raised so other counties. Irrigation in most cases is unnecessary because of the spring and early summer rains.

**ORGANIZE SMALL BRAND**  
A few members of the Advertiser club have organized a small brand. The growers are Myers, Evans, Drury and Leander Miller, French, Horn, Gattison, Frank, Arnold, Parker, Spitzer, and Frank Drury, Jr. to name several. These selections were made after a meeting held at the residence of J. H. Peare, one of the members present. (The Oregonian, March 27, 1931.)

## Then as Now -



It Came from Peare's--

Back in 1890 we first came to La Grande and established our jewelry store, and we are proud of this fact for 41 years the name "Peare's" has meant Quality and Reliability in jewelry goods in this city. We are proud of the friends we have made and the public patronage that has evidenced our success here over ten decades of this century. PEARE'S JEWELRY.

**J. H. PEARE & SON**  
JEWELERS AND OPTICIANS

Our Optical Department is in Charge of a Widely Recognized Specialist - Dr. W. A. Peare

The Old Ways Were Fine In Their Day, But--

These Are Modern Days

Send it to The Laundry

**MODERN LAUNDRY**

Corner Washington & Third  
405-407-409 La Grande, Ore.