

Around the Shops

Following this column with each appearance Mikady or Gentleman of La Grande will find much of interest in what is new for dress and home as chronicled by Bess Duke in her rounds of the local stores.

This season the swaggar suit is probably the most important part of midday's out-of-doors wardrobe, and it naturally follows that the second most important factor is the blouse, and the number of blouses increases the wardrobe accordingly. C. J. Breier company have just received wads of practically every color combination and style. Stripes, checks and plaids in bright colors are made with tie collars, cowl necklines, tailored collars, all having ruffles, jabots or ties at the throat, in keeping with the prevailing wind-blown mode.

An otherwise simple little suit of blue triple crepe has been made into a very smart and sophisticated outfit through the addition of a plaid more blouse shown at the Dora Vi Shop. The trim plaid blouse has stand-up collar which is in reality a double ruffle, and for decoration has two big buttons on either side onto which the jacket buttons. The jacket is hip length with a wide belt and three-quarter length sleeves. Two inverted box pleats at the sides of the front and the back are the only decorations on the skirt.

Blue clouds were the inspiration for a lovely color which has been used effectively this season for semi-formal gowns, one of which is to be seen at the Cinderella shop now. The outstanding thing about the dress are the sleeves, made of tulle and gathered into a straight strip from the shoulder to the wrist. Bright gold beads and flat white circles trim the sleeves. The neck line utilizes the popular ecclesiastical mode with a high cowl above a yoke in the front and a slit in the back which buttons high. The skirt is gored, fitting at the hips and flaring out at the knees to fall in graceful lines at the topline.

Worth has used a new brown Karols straw, eggshell moss crepe and matching gardenias to create one of the smartest hats seen about the shops this spring. The hat is an off-the-face pattern, but to break the expanse of forehead, the designer has blocked the brim straight down in front, still leaving the right eye somewhat of a mystery. Three small gardenias are set directly on the front of the shallow crown, while at the back is a very nonchalant bow of narrow Clary ribbon. The brim is underlined with moss crepe. The hat is one of the newest spring patterns at Palks La Grande store.

Even the finest musical composition is poor when played on a toneless piano, therefore for the discriminating pianist, the little Howard grand piano just received by the Radio Music and Supply Co. is a delightful instrument. Because no cabinet work obstructs the tones, their vibrant quality is unimpeded. The piano is in English brown mahogany. However, for the person who prefers an upright, a Baldwin built Howard in walnut is being exhibited at the music store. The latest model upright piano is built small and low, replacing the "white elephant" that used to fill practically all the avail-

able space in the music room. The most conservative pattern in fashion, made of the finest porcelain, which Richardson's Art Store has secured in the past several years has an embossed decoration of silver against an ivory background. The pattern is conservative, with the scalloped rim adding the variety which is so necessary these days. The advantage of the more conservative dishware is obvious since it will match any silverware and any separate pieces of colored glassware on a well appointed dining table.

Three-quarter length coats have panicked New Yorkers this season and are among the smartest of the models that will be shown in the spring fashion tea by the J. C. Penney company. A big swaggar suit has used the three-quarter length, but instead of the full back, the coat is fitted across the back and belted across the front. Wide stitched lapels of brown taffeta button back on the broad of the coat, while the sleeves are tucked to just below the elbow, giving a full effect. The skirt is straight and tight.

Like a lush green lawn in the spring are the quality rugs, manufactured by the A. and M. Karagheusanian company, on display at the W. H. Bohnenkamp Co. The rugs come in three qualities, the most luxurious of which is the super-gulistan, made from the same wool and the same dye as the finest of Oriental floor coverings. It is also interesting to note that the manufacturers of the quality rugs are the largest importers of genuine Oriental rugs in the world, and the only difference between them and the rugs shown here—the latter are made by machine but they have the high-lighted effect made simply through a play of light on the thick wool nap and the bright Oriental pattern.

With the advent of the spring season, colorful flower combinations herald its arrival. Tulips and dandelions are making their debut and for a spring party, Bohan's Flower shop suggest old rose tulips and yellow daisy-like dandelions for the centerpiece and table decorations. The pink and pussywillow are holding their own, also, among the spring decoration suggestions.

Never since Kipling eulogized them have shoes taken such a leading part in the fashionable ensemble as they do this spring. The variety of leathers is so wide that a lady can be as discriminating in leather as she is in cut. Burnett's Shoe Co. have an ample display of white sport oxfords of suede, calf and pigskin, the outstanding feature of which is the unique use of perforations of all sizes and in all patterns. This season, according to Burnett's, the perforation is the thing!

Combining two fashion notes that are popular this season, the black and white combination and the shirt waist dress, designers have made a charming creation which is now at Stevens-Van Engelen Co. The semi-formal gown is in one piece, with a black crepe skirt and gleaming white top, with loose dolman sleeves.

The shoulders peep through slits which are rimmed with a single row of black covered buttons. The crew neck is completed by two large white flowers at the shoulder.

PEBBLE CREPES ARE NEW Spring smartness is woven into fabrics of all types, and silks are crepey, mossy, pebbled, ribbed, and some have coarse linen weaves. They



Pebbled Crepes Have Smart Roughness in the Weave

Truly American furniture, in which the massive quality of the nation and the earnest quality of the race is depicted through an artistic use of geometrical designs and straight lines, has taken the furniture world by storm, and the modern bedroom furnishings are among the first to utilize the new mode. Fitzgerald's Furniture Co. are showing a modern walnut bedroom suite in which the low plain bed, and the other pieces utilize cleverly the combination of geometrical globes and straight lines that are being used to express the real America in the field of architecture, art, the theatre and the creative arts.

Now that the depression is over, people are beginning to use calling cards, and good ones, Nelson's Printing Co. are in line with the prevailing mode this season and are featuring thin plate finished paper. And for people who still like heavy cards, the new stamper paper is replacing vellum. Type faces on calling cards have deserted Old English and type of French origin are used almost exclusively. Wedding announcements match the paper now too, either smooth plate finish or suede paper, and an interesting new note about the announcements is the fact that they are cut to slip into the envelope without folding.

The spirit of modern America wrought in silver is displayed at Pearce's Jewelry Co. A new design for table silver takes its inspiration from the tree that is so deeply rooted in American life and traditions. Pine cones form the delicate clear-cut border, the flowing outline expresses the upward sweep of the tree. On the back of each piece of flatware is the image of the pine as it appeared on the famous pine tree shellings, as America's first identification of sterling. Pine tree is made in a complete service of flat silver and heavyweight hollowware to match.

As long as the dresses are high at the throat, sparkling little clips are a pleasing decoration. Guttrie's are showing a line of clips that are different from the usual, and which are attractive for formal wear. White crystal beads are clustered in a little sprig of green crystal leaves like a flashing snowdrop. First brilliant effect, a pleated back with a half belt and patch pockets with an inverted pleat. The suit is just one of the interesting models that utilize modish weaves and colors for spring.

The epitome of no-nonsense and smart sophistication has been reached in men's clothing in the new suits for spring shown at Trotter's. One that would catch the feminine eye is a black and white mixture that has a broad shouldered effect, a pleated back with a half belt and patch pockets with an inverted pleat. The suit is just one of the interesting models that utilize modish weaves and colors for spring.

Two interesting notes in jewelry are the return of yellow gold for watches and that the watches are being made smaller and smaller. Watches, too, are following the truly American design set forth in the modern field of art, simplicity. The trend to simplicity however, enhances the beauty of the dainty, jewel-like and the matching link bracelets of the popular "bagueettes" shown at Birnie's.

Spring dresses are a symphony in blue, with all shades from navy to the palest tints, being made into frocks for all occasions. Montgomery Ward and Co. are showing many different types of blue dresses for evening, afternoon and sports, in all of which the decoration is on the front, the new "windblown" mode.

Books for all types of tastes are in the regular stock at the La Grande Book and Stationery company, where they are very zealous in keeping abreast of the times and procuring the best of the new books for the La Grande reading public. The book store is featuring a collection of new editions at the fashion tea on Saturday.

Artificial flowers that are "realer than real" have just arrived at Melvilles—full blown roses in red and pink, with shadings as delicate as the garden variety, asters in rose, purple and white, that make a colorful combination, and petite daisies. The bios-

SHE ATE ALL-BRAN TWELVE YEARS WITH FINE RESULTS

Delicious Cereal Relieves Constipation

Read this very enthusiastic letter: "Something like eleven or twelve years ago, I began eating Kellogg's ALL-BRAN. When I started, it was called simply Kellogg's Bran, and I believe it was one of the first products of the kind on the market.

"My friends often laugh at my fondness for ALL-BRAN. It gives such a clean taste in the mouth, and I do not feel satisfied until I have had my ALL-BRAN.

"If the Kellogg Company should ever stop manufacturing ALL-BRAN, here is one who would be greatly disappointed."—Miss Amy Person, University Park, Iowa.

Science says that ALL-BRAN provides "bulk" to exercise the intestines, and vitamin B to further aid regularity. Also iron for the blood.

The "bulk" in ALL-BRAN is much like that of leafy vegetables. How much safer than taking patent medicines—often harmful. Just eat two tablespoonfuls daily for most types of constipation. For serious cases, try it three times daily. If not relieved this way, see your doctor.

Sold in the red-and-green package. At all grocers. Made by Kellogg in Battle Creek.

INNOVATIONS IN NEW FORDS ARE NUMEROUS

By W. C. Perkins, Perkins Motor Co.

There is nothing about the 1934 Ford V-8 that can be classified as experimental. Many items on the car are not only exclusively Ford but are features that require no substitute to give the comfort and performance and long life that is essential in producing an automobile or truck that the public has a right to expect.

Some of the new features include new 15 to 1 steering gear ratio, new oil indicator rod with pilot tube, new fuel pump, new dual down draft carburetor and dual intake manifold, water line thermostats, exclusive Ford transverse double cantilever springs front and rear, lowered steering wheel, new radiator shell and grill, new shell moldings, new hood with two fasteners, new streamline type radiator cap, new built-in clear vision, individually controlled ventilation.

The fenders and tire covers are in colors to match in De Luxe cars. Fords also have a new style choke and hand throttle, pull rods, improved shock absorbers, still double acting, but improved. It has increased power to engine refinements but no increase in engine size.

A baked enamel body finish is available in five colors. The engine has a new heat resisting valve seat inserts made of a tungsten steel alloy, new aluminum pistons and new easily removed valve assembly.

The beauty and comfort of the car interiors are materially improved by the use of new tufted upholstery, deeper seat cushions, after springs, new garnish moldings, core head linings, new instrument panel and new front door arm rest.

ZENITH-MAID WASH MACHINE QUICK, GENTLE

By Glen Wagner, Wagner's Hardware Co.

The Zenith-Maid washing machine "washes with gentle hands" because of the overhead agitator which is one of the most appealing features to the average housewife. The closed separator, which is a patented appliance, keeps the clothes on the outside of the machine where they have the longest travel in the water. The overhead agitator keeps them from knotting.

The machine has no clutches or gears in the driving mechanism, and makes no noise except the swishing of the water.

The wringer is of heavy cast aluminum which makes rust "an unknown quality." The split feature of the wringer makes the clothes easy to disentangle if they get stuck between the large rollers.

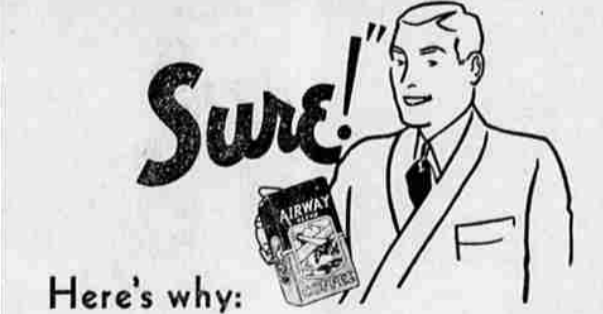
POLICE NIGHT CALL EXPLAINED

Police Chief Jim Steffen announced today that anyone calling the police during the night, if no one answers at the station, should ask the telephone operator to turn on the red light and then hold the phone until the police answer.

The bureau of standards has samples of pipe buried in 47 different kinds of soil to study how soil corrodes pipe lines.

Buildings erected near other tall buildings decrease the wind strain on the tall ones, government studies show.

"BARGAIN PRICE-SURE!"



Here's why: Sure, AIRWAY Coffee is sold at a bargain price. We admit it! We're proud of it! AIRWAY is a pure Brazilian blend which we are able, through our huge purchasing power, efficient manufacturing and wide-spread distribution to bring you at a low cost. AIRWAY'S low price is no indication of its quality. It should not be confused with coffees selling for about the same price. Because of its satisfying flavor, roaster freshness and economy, it has become the leading package coffee in the entire West in less than two years. Try AIRWAY Coffee. You are sure to like it!

For Sale in All Safeway Stores



DISTRIBUTION WITHOUT WASTE

Safeway Stores



Fri. - Sat. Mar. 2-3

- FLOUR**
Lily White - Safeway - Money back guarantee.
\$1.49
49-lb. Sack
- Spring Time is **Garden Seed Time**
Large Assortment of Finest Seeds
- PICKLES**
C & M Asst. Sweet, Sour, Dill, Chow-Chow, Spanola Sauce - 6 1/2-oz.
10c
- 2 Pkgs. **Grape Nut Flakes** **19c**
- Mother China **Oats** **25c**
- Kerr - Strawberry - Apple **Preserves** **29c**
- L. & H. - No. 2s **Grape Fruit** **23c**
- Exceptional Price and Quality.
- Gold Medal **Salad Dressing** **29c**
- Palm Olive **Soap** **14c**
- All Flavors **Jellwell** **14c**
- Ariz. Ice Packed - Solid **Lettuce** **5c**
- Quart **Comb Honey**
Delicious With Hot Biscuits
10c EACH
- Beans
Red Mexican
10 LBS.
39c
- Bluing or Ammonia
12-OZ. BOTTLE
7c

Buy **AIRWAY** COFFEE

GUARANTEED Fresh COFFEE

Lb. Pkg. **19c**

- Fancy Asst. Cello. **Candy** **10c**
- Bakers **Cocoa** **10c**
- Max. Cane - Maple Qt. Jug **Syrup** **35c**
- Del Monte - Picnic Size **Pineapple Juice** **10c**
- Miles Standish **Cookies** **19c**
48 Chocolate
- Swansdown **Cake Flour** **29c**
- Van Camps - No. 300 **Spaghetti** **19c**
- Purex **15c**

NOB HILL COFFEE

The real aristocrat of coffees—none better at any price! Fresh roasted daily. The flavor-protected package saves you the cost of an expensive container.

Pound package **23c**

- Pineapple**
Hillsdale - B. S. No. 2's
2 CANS
25c
- Ginger Ale**
or LIME RICKEY
PINT BOTTLES
10c
- Orange Pekoe TEA**
1/2-lb. Pkg.
23c
- Green TEA**
1/2-lb. Pkg.
19c
- Cheese**
Krafts - Any Flavor
1/2-lb. Pkg.
29c
- Cocoanut**
Bulk Snowdrift
Fancy POUND
19c

Friday is Family Circle Day—Get your copy from your nearest Safeway Store, it's Free.

Prices Effective in Union - Elgin and La Grande Stores. Prices effective while quantity lasts.

JOEL'S

Cor. Washington and Cedar WE DELIVER Phone: Main 759

"A Lower Priced Service Store"

MORNING MILK
10 Large Cans **60c**
Label admits you FREE to Motion Picture Party at Granada Theatre, Saturday, March 3.

Pink, Tall Cans **SALMON**
2 for 25c

Blue Rose **RICE**
4 lbs. 23c

JOEL'S "Golden Cup" **COFFEE** Per Lb. **26c**

Krispy Crax
2-lb. Box **32c**

BANANAS
3 lbs. **19c**

Snowdrift SHORTENING
3 lb. 43c

OXYDOL
Large Pkg. **21c**

Fresh Ground **VEAL**
For Loaf **12c LB.**

CALUMET
BAKING POWD. **26c**
1-lb. can

Home-makers Bureau

A new use for egg yolks. Sunshine Seven Minute Icing

1 cup sugar
2 egg yolks
1-3 cup boiling water
1 teaspoon vanilla

Beat egg yolks in top of double boiler; add sugar and then the boiling water, gradually. Have water in bottom of double boiler boiling gently. Place egg mixture over water and start beating immediately with rotary type beater. Beat constantly until mixture looks fluffy and will stand in peaks when beater is pulled out of it. Flavor. Orange juice might be substituted for water.

For aid in household problems, menu planning, or special recipes, send in your request with a self-addressed, stamped envelope to Julia Lee Wright, director, Homemakers Bureau, Safeway Stores, Inc., Box 900, Oakland, California.