

CLASSIFIED ADS

THE MARKET PLACE OF UNION & WALLOWA COUNTIES

(Count five average words to the line.)

Per line, 1st insertion... 10c
 Per line, each added consecutive insertion... 7c
 Minimum charge on one order... 30c

RATES BY MONTH

2 lines, per month... \$2.50
 3 lines, per month... \$3.25
 4 lines, per month... \$4.00
 5 lines, per month... \$4.75
 Each additional line over five charged at 50c per line per month.

FOR SALE

BARRED ROCK FRYERS Saturday at Public Market. 8-25-1 tp.

4 PIECE electric percolator set. At Curry Press. 8-25-1 tp.

PICKLING CUCUMBERS and beets for canning. Mrs. E. J. Skala, Phone 418-J. 8-24-3 tp.

MARTIN RIFLE 25-20 810. Call M. 987 or 1811 Adams Ave. 8-24-3 t.

GRAND PIANO at reasonable price. Also breakfast-table, Ph. Main 607, 1507 First St. 8-23-3 tp.

GREEN CHAIN WOOD—\$3.50 per load. Prompt delivery. Bowman-Hicks Lumber Co. Ph. Main 8. 8-3-t f.

FOR SALE—Scratch paper for school or home, at the Observer, 5c pad. 11-2-t f.

FOR RENT

WELL FURN. APT. Private home. Mod. unfurn. houses. 1706-4th. 145 W. 8-25-1 m.

5 & 3-RM. FURN. APT.—1905 Adams. 8-25-3 t.

5 ROOM modern house. New paint and paper. Some furniture. Garage. 1908 Adams Ave. 8-25-2 tp.

6-ROOM FURNISHED HOUSE. 301 Main St., garage. Inquire at 303 Main St. 8-24-5 tp.

WANTED

BOARD AND ROOM for H. S. boy. Will work or pay in farm produce. Write Box X, Observer. 3-23-3 tp.

MISCELLANEOUS

LICENSED PLUMBER, rates reasonable. Call Fred Balms, 203 N Ave. 7-5-1 m.

DOWELL BROS. CLEAN-UP—We will clean up your ashes, papers, etc. Phone 829-J. 8-3-t f.

EASTERN OREGON School of Music, violin, piano, voice. Credits. L. O. O. F. temple, 447-J. 9-6-1 m.

AUTOMOBILES

AUTOMOBILES—Ford Fordor Sedan. New top and paint job. Good tires. Excellent mechanical condition. Price \$250. Perkins Motor Co., Fourth & Adams, ph. Main 500. 8-21-17.

J. E. REYNOLDS IS SUPERINTENDENT OF HORSE EVENTS

SALEM, Ore. (Special)—Men and women from various parts of the state have been named department superintendents for the 1933 State Fair, opening here Labor day. Along with their announcement, Max Gehlar, director of the fair, said that a new policy was being followed this year with each superintendent in complete charge of his show.

In order to help out the fair this year the superintendents and secretaries, who handle the financial details in each department, including entries, recording judges' reports and the issuance of premium awards, are offering their services free. They are being paid only a moderate per diem for expenses.

Included in the list of superintendents are the names of men who have made Oregon State Fair history: J. C. Finnicum, of Dayton, will again have charge of the beef cattle show. For 20 years Finnicum has been associated with this department of the fair and is known to hundreds of exhibitors. J. E. Reynolds, of La Grande, superintendent of the horse department, is another veteran in point of service as is Edward Shearer, of Estacada. Shearer, in charge of the poultry department, has served 10 years since 1923. He has watched the poultry department outgrow three buildings on the fairgrounds, including the present one which was thought big enough for all time when it was built 12 years ago.

Complete list of department superintendents are: horse, J. E. Reynolds; La Grande; livestock, W. S. Bartlett; Salem; beef cattle, J. C. Finnicum; Dayton; dairy cattle, W. S. Bartlett; Salem; sheep and goats, Ronald Hoeg, route 2, Salem; swine, Cass Nichols, route 6, Salem; 4-H club, H. C. Seymour, Corvallis; Future Farmers, Earl R. Cooley, Salem; poultry, Edward Shearer, Estacada; rabbits, V. D. Leek, route 3, Salem; land products, Charles A. Cole, Salem; dairy products, J. D. Mickie, Salem; floral, Mrs. George W. Spring, Lents Station; photography, art, William Ball, Corvallis; textile and domestic baking, Mrs. Walter L. Spaulding, Salem; art, Mrs. William Bell, Roseburg; racing, Dr. W. H. Lytle, Salem; concessions and rentals, Ed L. Moore, Hillsboro; agricultural building, H. A. Richards, Portland.

New Negligees As Elegant As Evening Gowns

Rita Ferris (Associated Press Fashion Editor) PARIS (AP) The new negligees are as elegant as evening gowns, with heavy crepes and dull satins cut on long slender lines prominently featured.

Less lace is used than last year, many of the models being untrimmed.

One white crepe negligee has long sweeping lines, with side drapery and sweeping sleeves made of white embroidered mousseline.

Elegance in Lingerie As in negligees, so in the lingerie designed to wear under the new fall frocks is elegance the rule.

Long slender silhouette, fashioned to fit the figure without a single wrinkle, delicate hues and fabrics with sheen make the newest models.

Although femininity is the essence of their design, ostentation is taboo. Applications of point d'esprit or tulle are taking the place of lace on a number of designs, since lace now bedecks some of the cheaper lingerie.

Slips Supplant Chemises Slips, cut on the bias and fitting the figure like a glove, are supplanting the brief chemise in many houses, where designers say their smartest clients prefer the longer line.

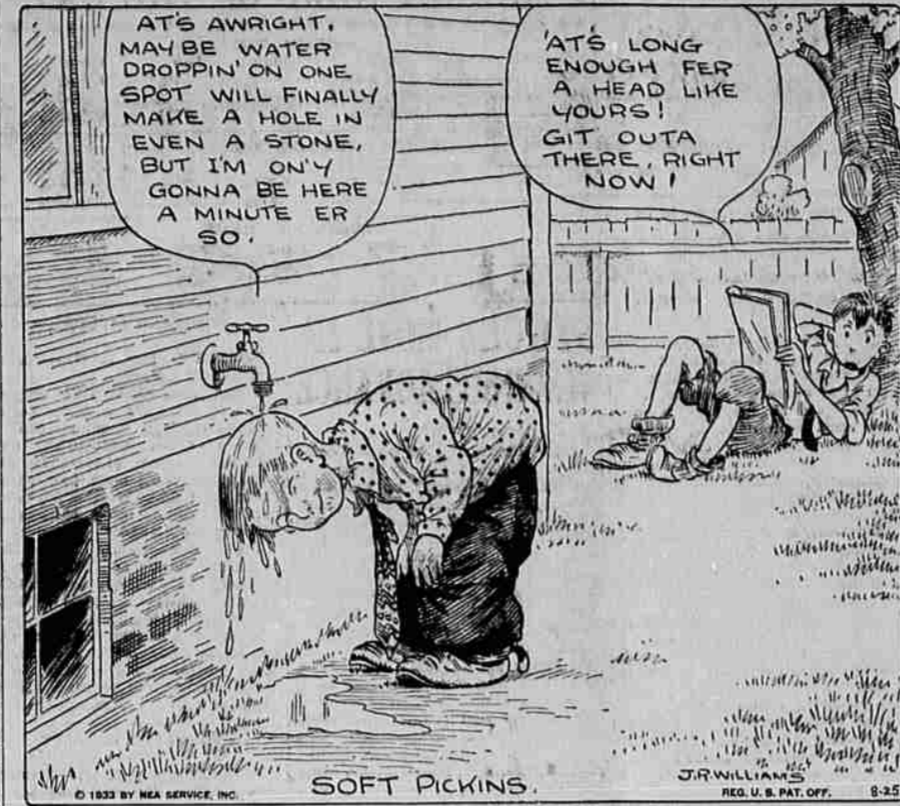
White is back in the picture as a smart lingerie shade, while tea rose and a new yellowed rose called "banana" are also smart. Black lingerie is the demier chic with black evening clothes. Triple voile, soft crepes and some crepe satin are the favorite fabrics.

Prof. John O. Worley of the University of Michigan says steam automobiles rumbled over English highways as early as 1825.

A cucumber 14 inches long and weighing 2 3/4 pounds was grown by Henry Galloway of Charlotte, N. C.

Sheets of copper one twenty-thousandth of an inch thick can be manufactured.

OUT OUR WAY



By J. R. Williams

THE NEWFANGLES



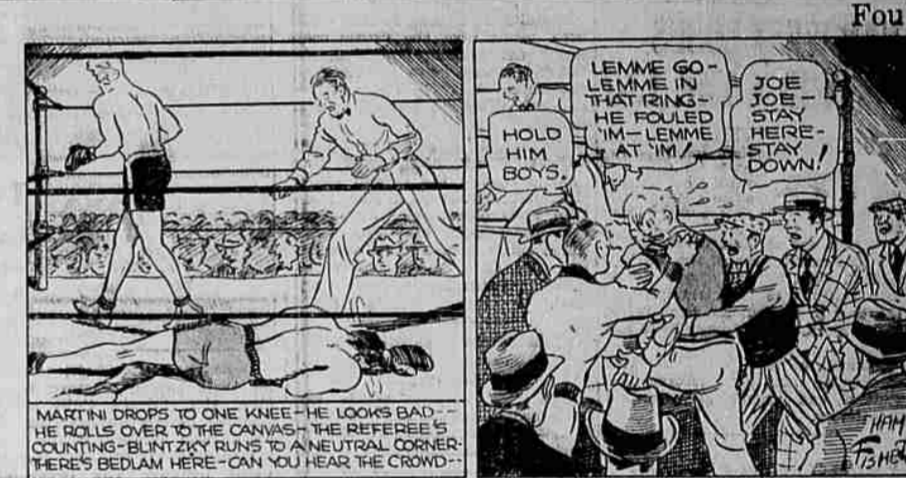
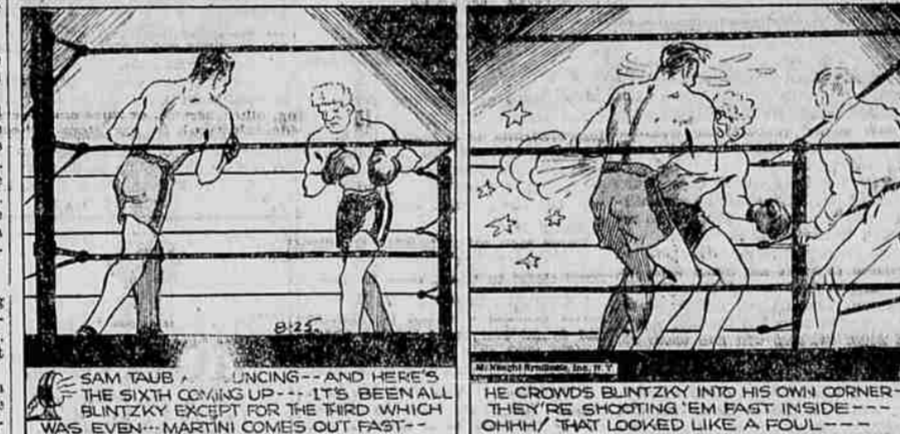
Mrs. Gimme Gets Hers!

THE BUNGLER FAMILY



Poor Sybil!

JOE PALOOKA



Foul

DIANA DANE



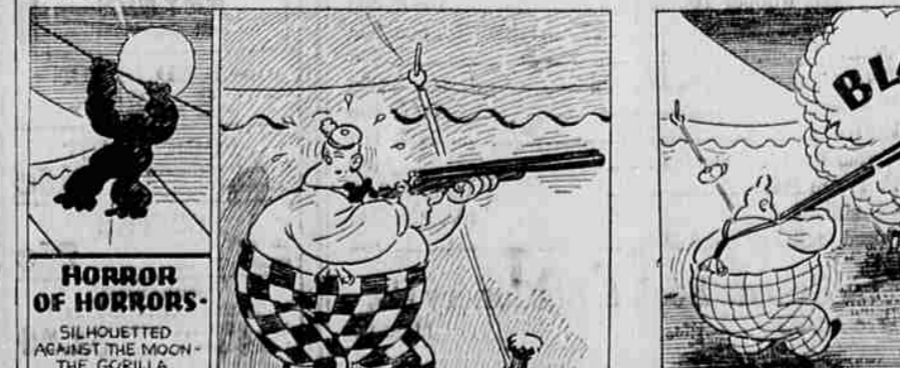
Slight Error

SCORCHY SMITH



Off For The Rockies!

THE DILLYS



Plugged

THIS CURIOUS WORLD

NIAGARA FALLS NEARLY CEASED TO FLOW ON MARCH 30TH/37. THE FLOW ON THAT DAY WAS HARDLY MORE THAN THAT OF A MILL-DAM/ AN ACCUMULATION OF ICE BETWEEN FORT ERIE AND BUFFALO WAS THOUGHT TO HAVE CAUSED THE UNUSUAL OCCURRENCE.

THE GOLIATH BEETLE, OF AFRICA, IS THE LARGEST BEETLE IN THE WORLD! IT HAS A BODY FOUR INCHES LONG.

PERSIAN LILACS COME FROM CHINA!

THE GOLIATH beetle is quite common at certain seasons in the forests of equatorial Africa. The giant insect has much the appearance and sound of an airplane, as it dunes about high up above the trees. In spite of its large size, it can land in the branches, and take off with great speed.