

Heavy Building Program In The Oregon Forests

PORTLAND, Ore., Oct. 13 (Special)—A heavy program of permanent forest improvement work is now being carried out on the 13,444,000 acres within the 14 national forests of Oregon, reports the regional forester at Portland, Oregon.

This program is made possible through special relief appropriations of the last congress and includes a wide range of needed forest developments, such as fire protection projects as well as administrative, stock ranges, and public campground improvements.

Among the many construction items in the national forest program for Oregon are 24 lookout towers, 16 fire towers, 45 fireman's cabins, 25 ranger station houses, 21 barns, 71 public campgrounds, 13 tool houses, 223 miles of telephone line, 38 miles of pasture fence, 14 stock counting corals, 84 range water improvements, and 28 miles of drift fence.

Under road and trail work, a total of 307 miles of secondary or forest roads are to be built, while 110 miles are to be bettered. Trail work will consist of 225 miles of new work and improving 61 miles of existing forest trails.

The regional forester brought out the fact that not only will the national forest improvement program help local unemployment relief situations, but will call for large quantities of lumber, shingles, telephone and barbed wire, and a wide variety of hardware and building material.

Labor for this work is being handled entirely by the forest supervisors of the 14 national forests of Oregon, co-operating with their local relief agencies.

The regional forester brought out the fact that not only will the national forest improvement program help local unemployment relief situations, but will call for large quantities of lumber, shingles, telephone and barbed wire, and a wide variety of hardware and building material.

Labor for this work is being handled entirely by the forest supervisors of the 14 national forests of Oregon, co-operating with their local relief agencies.

Four Governors To Hunt Birds At Ontario, Ore.

SAN FRANCISCO, Oct. 13 (AP)—Ontario, Oregon, is slated to be the scene of an important conference Friday when the governors of Idaho, Nevada, California and Oregon get together there to see who can shoot the most Chinese pheasants.

Announcement of the arrangements, made here today, said Governor James H. H. Blaine of Nevada would leave Sacramento Friday noon by airplane with Colonel Roscoe Turner, speed flier, at the controls, for Ontario to meet there by Governor C. Ben H. Harbo of Idaho and Julius L. Meier, of Oregon. In the party also will be Earl B. Gilmore California state game and fish commissioner, and William F. Benedict, Idaho's former secretary.

The announcement said a 16,000 acre stretch of sagebrush land had been set aside for the "conference," which is to take place on the opening day of the pheasant season. The announcement named "Bill" Hanley, Eastern Oregon cattleman, as one of the hosts.

Creation of Great Liberal Party Under Way, Bourbon Chairman Says

By Byron Price

Viewing the campaign in its larger, long-time aspects, the student of politics will be much interested in some remarks made by the Hon. James A. Farley as he arrived, flushed and smiling, at the New York termination of his swing through the west.

"There is now in process of creation a great liberal party, made up of persons of all shades of political belief," said the Democratic national chairman. "We are making political history these days under the leadership of Franklin D. Roosevelt."

Of course substantially the same thing has been said on numerous other occasions when nothing came of it. But in this instance the Democratic chairman cited chapter and verse to show on what his expectations were based; and whether his conclusions were justified or not, he at least was describing a set of circumstances full of dramatic interest.

Making Political History

If for no other reason than the gigantic scale on which it was projected, the Democratic effort to break across party lines has made political history.

Governor Roosevelt allotted three full weeks to his westward trip at a crowded period of the campaign, and in every speech he invited insurgent Republicans to his standard.

In California he praised publicly the insurgent Republican senator, Hiram Johnson, and was answered by a statement of appreciation in which Johnson contrasted Roosevelt with Hoover.

In New Mexico he invited to the platform with him the Republican insurgent senator, Bronson Cutting. In Nebraska he was introduced by the insurgent Republican senator, George W. Norris, and the expressions of regard and confidence were mutual.

During most of this time Chairman Farley let other problems accumulate on his desk in New York while he joined in the western quest. It was at the conclusion of an extraordinary series of conferences that the chairman returned eastward, announcing that birth of "a great liberal party" was at hand.

G. O. P. Side of It

One of those who promptly predicted that nothing would come of it all was the Hon. Everett Sanders, Republican national chairman.

On the day Farley returned, Sanders gave out his own version of what was taking place in the west. His philosophy was in interesting contrast to that of the Democratic chairman, for he clung tenaciously to the tenet that Republicans will be Republicans on election day.

"They are forgetting how terribly Republican those states really are," said Sanders.

Time and election returns will tell who is correct, but regardless of the outcome, history will record for 1932 the most far-flung attempt of contemporary times to realize the old dream of political realignment.

Depends on Circumstances

As to the future course of the experiment, everything must depend on circumstances.

If Governor Roosevelt is defeated, will he or anyone else be able soon to attain the goal of "liberal party" leadership which Farley now thinks is so near?

If Governor Roosevelt is elected, will he be able to consolidate into a permanent working organization the various elements which helped to bring him victory?

These are questions which belong to the next immediate phase of the evolution of party politics.

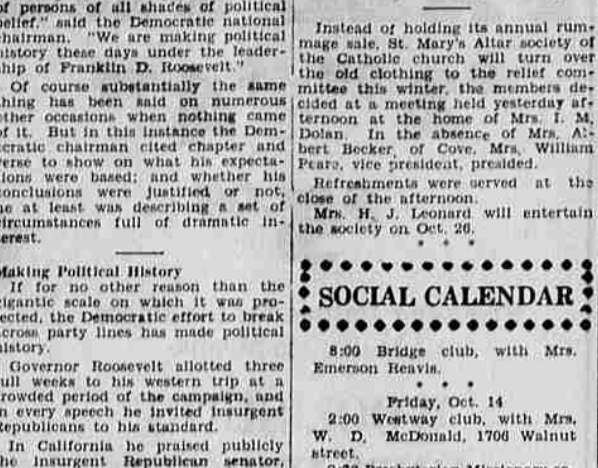
Who's The 13TH Guest?

65,000 Families Aided

ST. LOUIS (AP)—Relief agencies of the St. Louis citizens' committee aided 65,000 families, comprising 262,000 individuals at a cost of \$2,288,000 during the first eight months of 1932, a report disclosed.

Smith in State Political Fight

Back in the political trenches and fighting with his customary vigor was Alfred E. Smith, shown here during a telephone conversation from his hotel in Albany, N. Y., scene of the Democratic state convention. And this time Smith was united with Franklin D. Roosevelt in backing the nomination of Gov. Herbert H. Lehman for governor against the opposition of Tammany Hall.



Back in the political trenches and fighting with his customary vigor was Alfred E. Smith, shown here during a telephone conversation from his hotel in Albany, N. Y., scene of the Democratic state convention. And this time Smith was united with Franklin D. Roosevelt in backing the nomination of Gov. Herbert H. Lehman for governor against the opposition of Tammany Hall.

SOCIETY NOTES

(Continued From Page Three)

Altar Society To Aid Needy People

Instead of holding its annual rummage sale, St. Mary's Altar society of the Catholic church will turn over the old clothing to the relief committee this winter, the members decided at a meeting held yesterday afternoon at the home of Mrs. I. M. Dolan. In the absence of Mrs. Albert Becker, of Cove, Mrs. William Pearce, vice president, presided.

Refreshments were served at the close of the afternoon.

Mrs. H. Leonard will entertain the society on Oct. 26.

SOCIAL CALENDAR

- 8:00 Bridge club, with Mrs. Emerson Heavis.
- Friday, Oct. 14
- 2:00 Westway club, with Mrs. W. D. McDonald, 1708 Walnut street.
- 2:30 Presbyterian Missionary society, at the church.
- 2:30 Greenwood Parent Teacher association, at the school.
- 4:00 Nissaki Camp Fire, with Miss Virginia Westzel.
- 8:00 Women of the Moose card party, with Mrs. Grace Spivard.
- Saturday, Oct. 15
- 2:00 Women's Relief Corps, at the Odd Fellows hall.
- 8:00 Saturday Night Bridge club, with Mrs. J. P. Morelock.
- Monday, Oct. 17
- 1:45 San Souci club, with Mrs. W. A. Hager.
- 2:00 Art Ramblers, with Mrs. C. H. Bidwell.
- 2:00 Wakelita club, with Mrs. A. E. Hug.
- 8:00 B. M. Z. club, with Miss Marguerite Zweifel.
- Tuesday, Oct. 18
- 2:00 M. I. L. club, with Mrs. E. Jacobsen.
- 2:00 Neighborhood club, at the La Grande hotel.
- 7:30 Neighbors of Woodcraft, at the Odd Fellows hall.
- 7:30 Delphian chapter, Sacajawea Inn.
- 7:30 Literature group of the American Association of University Women, with Miss Kate Hour.
- 8:00 Bridge club, with Misses Edna Mae and Bernice Wilson.
- Wednesday, Oct. 19
- 2:00 Bible Searchers class of the Presbyterian church, with Mrs. W. E. Snook.
- 2:00 So-Ne-He club, with Mrs. Weldon Vedder.
- 2:00 Women's Home Missionary society of the Methodist church, with Mrs. A. W. Burnett.
- 7:30 Rebekah lodge, at the Odd Fellows hall.
- Reorganize Illinois Coaching School
- URBANA, Ill. (AP)—More than 300 students have enrolled in the University of Illinois' new school of physical education, which combines the former coaching school and department of physical welfare.

The Garden

DRESS UP YOUR GARDEN FOR WINTER

Many people plan gardens and shrubbery borders so that something will be in bloom from early spring to late fall and having achieved a satisfying succession of bloom with an interesting foliage background, rest contented with the result. And they have reason to feel that they have done well, for it is no small achievement to keep the garden tastefully dressed according to the everchanging modes of foliage and flower.

But how about those months that come between fall and spring—must the garden wear "just anything" during that trying season? This is a good time of the year to give a little thought to providing an interesting, colorful winter costume for your garden. Of all seasons when the garden needs gay-colored attire, winter certainly heads the list.

Get some of the shrubs that have colorful bark in winter. By contrast they make even the browns and blacks look gay. Plant plenty of bright-berried shrubs near the house. Not only do they contribute their full share of beauty to the garden's winter wardrobe, but they draw the cheerful, hardy little winter birds to your grounds.

Evergreens are indispensable for the note of warmth they lend the garden's winter ensemble. They give an excellent background for the bright hued berries and twigs and when massed at strategic points brings about a feeling of snugness in this home place where otherwise a shivery exposure of sweeping winter winds might be felt.

In the Dogwood or Cornus group we find the best examples of shrubs with colored bark for winter. There are several of these which vary in color from the crimson through the deep red and into the purple. One variety has yellow bark, and when grouped with the red-twigged sorts, will give a touch of lively contrast to the winter costume of your grounds.

Barberry, Euonymus in variety, Honeysuckle in variety, Buckhorn, Sumac, Snowberry, Indian Currant and Viburnum—all are valuable for their berries which hang on into the winter.

Trees which have attractive bark and are desirable in both summer and winter are: Birch (white bark), Elaeagnus (silvery bark), Platanus or Oriental Plane Tree (white patched bark), and Golden Willow in both upright and weeping forms (yellow bark).

With such a selection of shrubs, trees and evergreens, you'll find it interesting to plan a colorful winter wardrobe for your garden.

HERO OF GRIDIRON EPIC TO COACH DETROIT FROTH

DETROIT, Mich. (AP)—The University of Detroit varsity now has something to worry about.

Edward J. Maloney, who usually is described as the hardest hitting full-back ever developed among the men of Detroit, is returning to coach the freshman backfield. Maloney has been coaching at Kenyon college.

Maloney, a member of the undefeated team of 1928, is the hero of many football yarns around Detroit. One of his exploits was a needed touchdown in the final minute of play with Carnegie Tech.

CLEANING PRICES REDUCED!

Phone Main 56 for Quotations

Standard Laundry & Cleaning Co.

"Wife Saving Station"

Phone Main 56

FIND IT HERE

Copy for (this Column must be in by 9 a. m.)

PUBLIC MARKET

Leave your orders for rabbits and chickens. We deliver. 10-12-2 t.

Plumbing and Heating

Wood For Sale

Call Fred Balme, 208 N. Ave. 9-15-1 m.

Jay Freshhears—Auctioneer

R. F. D. No. 1, Alicel, Oregon. 9-15-1 mp

Carrier's Tablets for stomach trouble at Moon Drug Co. 10-12-1 m

See us first if it's cleaning and pressing. Prices reduced.

ZWEIFEL'S CLEANING—Main 176 10-5-1 m.

COOKED FOOD & APRON SALE

Noah's Paint Shop Sat. by United Spanish War Vets. Aux. 10-12-3 t.

NEW LAMP SHADES

The new fall shipment of Lamp Shades in the very latest creations in both parchment and silk, has just been received by Richardson's Art and Gift Shop. In this line will be found shades for every style of lamp and at unusually low prices. You are invited to see this new line of shades now at Richardson's Art and Gift Shop. 10-10-3 t.

Moon's—Agents for Carrier's tablets. 10-12-1 m.

Crazy Crystals on sale at Moon Drug Co. 10-12-1 m.

COLD WEATHER

Is coming. Now is the time to have the broken windshield or side glass replaced in your car. Take it to Richardson's Art and Gift Shop for quick service and most reasonable prices on all glass work. 10-10-3 t.

FOUR INDIANA COACHES BUCKING FORMER TEAMS

BLOOMINGTON, Ind. (AP)—Football business runs thicker than sentiment at Indiana university.

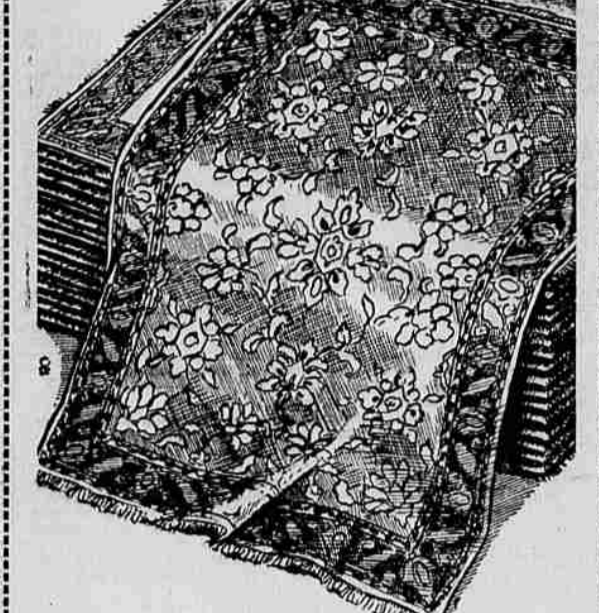
Of the staff of five football coaches at Indiana, four will urge the scrapping Hoosiers to beat teams with which they formerly were connected.

Coach Hayes will try to beat Mississippi State, where he made his reputation as coach before coming to Indiana. W. H. Thom will be after a victory over his old alma mater, Iowa, where he played in the backfield.

Wally Marks, freshman mentor would like to see Indiana beat Chicago and his old master, A. A. Stagg. A. J. Nowack will be watching for trick plays of his former mentor, Zuppke, when Indiana plays Illinois.

Rugs! Rugs!

Every Grade - Every Size Every Price



We invite your inspection of Eastern Oregon's largest and most complete stock of Rugs

Bohnenkamp's

Four Floors of Fine Furnishings

DAYTON MISSES HAWAIIAN PLAYERS ON GRID TEAMS

DAYTON, Ohio (AP)—For the first time in years the University of Dayton finds itself with but one Hawaiian candidate for its football team.

Sackwitz, Pat Hennessey, Pat Glendon, John McCoolgan and Jack Robello. Sam Hippa was the all-time star from the island to play on Dayton teams.

IRELAND PEACEFUL

BELFAST, Northern Ireland, Oct. 13 (AP)—Peace prevailed here today after the unemployment riots of Tuesday and Wednesday. Police made about a dozen arrests for violation of the curfew law last night, but on the Anglo-Catholic, "Shic-zee" Achtu, whole the order was obeyed without question.

McClay's Stores

Store No. 1 — 1704 Adams Phone Main 515 Save Time and Money

Store No. 2 — 2916 N. 2nd. Phone Main 109 Telephone Us Your Order

Special Friday and Saturday

Garstens Mild Sugar Cure Picnic Hams Per lb. . . . 11c	Beans Great Northern Large White 6 lbs. . . 25c	Honey Pure 5-lb. Pail . . . 39c
MACARONI NOODLES SPAGHETTI Porters 2-lb. Pkg. . . 22c	Kraut 2 No. 2 1/2 Tins . . . 25c	Corn Standard White 5 No. 2 Cans . . . 49c
Peacock Buckwheat Flour Albers Per pkg. . . 25c	Shrimp 2 No. 1 Tins . . . 23c	Kellogg's Whole Wheat Flakes 2 Pkgs. . . . 19c
Soap Bob White 10 Bars . . . 25c	Butter Local Creamery 2-lb. Roll . . 49c	Starch Corn or Gloss 3 Pkgs. . . . 25c
BEEF ROASTS Per lb. . . . 12 1/2c	WEINERS 2 lbs. 27c	
FRESH FRUITS and VEGETABLES		
CELERY Per Bunch . . . 5c	LETTUCE Fresh and Crisp 3 Heads . . . 13c	SQUASH Half or Whole Per Pound . . . 2c



For that's about the price difference per cup between cheap teas and the world's finest—Lipton's Yellow Label Tea

It is false economy to buy cheap tea in order to save a few cents a pound. Figure the cost of tea by the cup—and you will see that Lipton's Tea is truly economical. Lipton's gives you more cups per pound and more enjoyment per cup. Why take chances when the best costs no more? Use Lipton's Yellow Label, it's the world's finest, grown and blended by tea experts.

Order from your grocer today.



COMMUNITY CASH STORE

Features for FRIDAY & SATURDAY Oct. 14 & 15

Wheat Flakes Kellogg's Whole 2 pkgs. . . . 19c	Pancake Flour Sperry's Self-Rising No. 10 bag 45c
Soap White Laundry 10 bars . . . 23c	Soup Campbell's Tomato 3 for 25c
WALNUTS 1932 Crop—2 LBS. 35c	
SUGAR Pure C. & H. Cane 20 POUNDS . . . \$1.09	
Macaroni Best Grade—Bulk 5 lbs. 29c	Rice Fancy Blue Rose 5 lbs. 35c
Beans Red Mexican 5 lbs. 25c	Toilet Tissue 1000-Sheet Rolls 4 for 19c
FLOUR Sperry's Best. 49-lb. sk. . . \$1.19	49-lb. sk. . . \$4.69
COFFEE Our Very Best, Ground Fresh Daily, 3-lb. Pkg. . . 85c	
Beef Roasts Very choice cuts, POUND . . . 12 1/2c	Choice Beef Boil Short Ribs—4 POUNDS . . . 25c
Pork Shoulders Note the Saving, POUND . . . 9c	Eastern Ham Swift's POUND . . . 18c