

**Bring Your Dollars to Penney's Parade of Values**

**Children's Shoes 98c**

**Boy's Longies 98c**

**"Big Mac" Overalls 63c**

**J. C. Penney Co.**  
1307-1309 Adams Ave.  
La Grande, Ore.

**DEMAND FOR LOCAL SPUDS IS MAINTAINED**

PORTLAND, Aug. 25 (AP) — Maintenance of the demand for local potatoes on the east side farmers' wholesale market in face of increasing competition with Central Washington stock was reflected today. During the session there was an unchanged price list generally with trading of fair volume.

Peaches naturally come in for most attention and the weakness there appears chiefly in the Willamette valley stock, which is undervalued while Yakima stock sells fairly well. There was practically no change in the price of Yakima offerings for the day but valley bushels were down to a general top of 50¢ to 55¢. Dalles Elbertas sold around 40¢ box for best stock with halves of large size up to 40¢ to 50¢ and the same for large Crawfords.

Prunes were in larger supply and sold slowly at 25¢ to 30¢ box generally with plums around 25¢ and Damsons 30¢ box. There was no snap to the buying.

Pickling cucumbers found a fair call at the late range of 20¢ to 35¢ box with table stock at the lower mark. Dill sold at a nickel a bunch.

Corn market was practically unchanged with a general top of 60¢ and the bulk around 50¢ to 60¢ sack.

**MARKET NEWS OF THE DAY**

CHICAGO WHEAT				
	Open	High	Low	Close
Sept. (old)	51 1/4 @ 1/4	52 1/4	51 1/4	52 1/4 @ 1/4
Dec. (new)	51 1/4	52 1/4	51 1/4	51 3/4 @ 1/2
May	54 1/4 @ 1/4	55 1/4	54 1/4	55 1/4 @ 1/4
	59 1/4 @ 1/4	61 1/4	59 1/4	60 3/4 @ 1/4

PORTLAND WHEAT				
	Open	High	Low	Close
Sept.	50	50 1/2	50	50 1/2
Sept.	53	54	53	54
Dec.	56	57	56	56 1/2

CHICAGO CORN				
	Open	High	Low	Close
Sept.	30 @ 3/4	30 1/4	30	30 3/4
Dec.	31 1/4 @ 1/4	32 1/4 @ 1/4	31 1/4	32 1/4
May	36 1/4	36 1/4	36 1/4	36 1/2 @ 1/4

**Butterfat And Butter Down A Cent in Oregon**

PORTLAND, Aug. 25 (AP) — General cut in the price of cube butter on the produce exchange for the late season was simply a reflection of a former unwise condition which was brought out by speculators. There was a cut all around of 1¢ in the price of cubes effective this morning, thereby following what has very recently shown in San Francisco and Los Angeles. It was the drop of 2¢ in the latter a couple of days ago that started the depression.

The cut in prices was forced, not as a result of increased manufacture but to the heavy continued withdrawals from storage. The make is still decreasing at practically all points but speculators with storage stock on hand are not at all inclined to lose time in taking even a nominal profit.

Butterfat was down 1¢ as a result.

The advance of 1¢ all around in the egg market as announced by Manager Dixon of the Pacific coop is now in effect here and is being maintained. The new price on extras is 20¢ dozen.

Advance of 1¢ lb. in the price of cheese effective at once announced by the Tillamook association. The new price in Portland will be 15¢ for triplets and 18¢ for loaf.

Market for chickens remains a generally steady to strong tone. Active demand is shown all through the list with a scramble for all except the heavy sorts. In spots even these are eagerly sought.

Peach prices here have reached the lowest mark known with sales of Yakima fancy Elbertas 35¢ to 40¢ and Oregon (Willamette valley) Crawfords 20¢ to 30¢ box. Quality in general is very good.

More rapid movement of Dillard cantaloupes is confirmed here. Extreme quality is finding favor generally at \$1.10 crates for standards. Other cantaloupes are steady.

First Muir peaches of the season are appearing in the local trade and already there are advance orders for supplies. The season is said to be earlier than usual and will close quicker.

Local potatoes continue to dominate the potato market despite the offering of Yakima at even lower values. Extreme quality of the home product this season is given as the reason.

Notes of wholesale trading:

Grape markets are weaker all around.

Heavy weight calves are not so firm. Tomato prices are down another notch.

Rogue River pears are being sold for any price buyers are willing to pay as they must have a home.

Corn market is generally steady.

Huckleberries show a better movement at 7¢ top for coast or mountain fruit and 6¢ for mountain offerings.

**BULLS, BEARS MIX IT UP IN WALL STREET**

NEW YORK, Aug. 25 (AP) — The bull movement in stocks was accelerated for a time today by buoyancy of principal commodity markets, but it ran into considerable selling in the afternoon.

Production of International Harvester's quarterly dividend of 30 cents from 45 cents was accepted as a signal to take profits and gains which had ranged from \$1 to \$5 a share were sharply reduced.

Several issues sold under last night's final prices for a time, but the market was bolstered by fresh buying late. There was a mixture of gains and losses at the finish.

Trading reached a volume reminiscent of the big markets of 1929. Turnover of around four and a half million shares made it one of the biggest days of the last two years.

**PORTLAND LIVESTOCK**

PORTLAND, Aug. 25 (AP) — Cattle 50, calves 10; nominally steady. Steers 600-900 lbs. medium \$4.00 to \$5.85, common \$2.50 to \$4.00-1100 lbs. medium \$4.00 to \$4.85, common \$2.25 to \$4.00; 1100-1300 lbs. medium \$3.75 to \$5.75; heifers 550-850 lbs. medium \$3.00 to \$4.75, common \$2.00 to \$3.00. Cows, common and medium \$1.75 to \$3.40, low cutter and cutter \$1.00 to \$1.75; bulls yearlings excluded, good and choice (heer) \$2.75 to \$3.25, cutter, common and medium \$1.75 to \$2.75; yearlings (male) good and choice \$4.50 to \$5.00, medium \$3.50 to \$4.50, cull and common \$2.00 to \$3.50; calves 250-500 lbs. good and choice \$3.50 to \$4.50, common and medium \$2.00 to \$3.50.

Hogs 150, steady; light lights 140-160 lbs. good and choice \$4.00 to \$4.75, 160-180 lbs. good and choice \$4.50 to \$4.75, 180-200 lbs. good and choice \$4.00 to \$4.75; medium weight lights 220-250 lbs. good and choice \$3.75 to \$4.40; heavyweights 250-350 lbs. good and choice \$3.50 to \$4.25; packing sows, 275-500 lbs. medium and good \$3.00 to \$3.75; feeders-stockers 70-130 lbs. good and choice \$3.50 to \$4.25.

Sheep and lambs 500, steady. Lambs 90 pounds down, good and choice \$4.25 to \$4.50, medium \$3.50 to \$4.25, all weights, common \$2.50 to \$3.50; yearling wethers 90-110 lbs. medium to choice \$1.25 to \$2.75. Ewes 120 lbs. medium to choice \$1.00 to \$1.50, 120-150 lbs. medium to choice 70¢ to \$1.25, all weights, cull to common 50¢ to 75¢.

**PORTLAND CASH**

PORTLAND, Ore., Aug. 25 (AP) — Cash wheat: Big Bend bluestem 59¢. Soft white 53 1/2¢. Western white 53 1/2¢. Hard winter 53 1/2¢. Northern spring 53¢. Western red 52¢. Oats: No. 2 white \$17.00. Today's car receipts: wheat 63; flour 10; corn 1.

**CHICAGO LIVESTOCK**

CHICAGO, Aug. 25 (AP) — (U. S. D. A.) — Hogs 18,000; active to 5 to 10¢ higher; 180-200 lbs. \$4.75 to \$4.85. Cattle 5,000; active; fed steers and long yearlings strong to 25¢ higher; \$10.00 paid for 3 loads 1323 bullocks, several loads \$9.00 to \$9.65; long yearlings \$9.50; beef cows firm; vealers 25 to 30¢ higher; \$5.00 to \$7.00. Sheep 8,000; lambs and yearlings 25 cents lower, desirable natives \$5.00 to \$5.50; bidding \$5.25 to \$5.50 on western; native three-months \$3.50; slaughter ewes \$1.50 to \$2.25.

**PORTLAND PRODUCE**

PORTLAND, Aug. 25 (AP) — Butter — Prints 92 score or better 20¢ to 21¢; standards 19¢ to 20¢. Butterfat — Direct to shippers; station 15¢; Portland delivery prices 17¢ lb. Eggs — Pacific poultry producers' selling prices; fresh extras 20¢; standard 19¢; mediums 18¢. Live poultry and country meats unchanged. Mohair, nuts, cascara bark, hops, onions, potatoes, strawberries, wool and hay quotations unchanged.

**LIVERPOOL WHEAT**

LIVERPOOL, Aug. 25 (AP) — Wheat close: Oct. 57 1/4; Dec. 57; March 57 1/4. Exchange \$3.46.

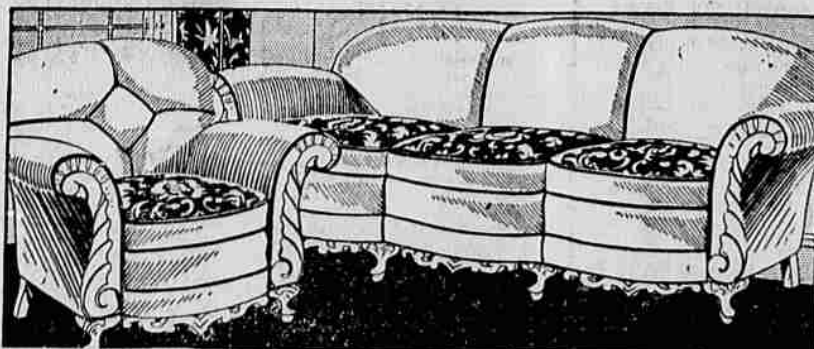
**OMAHA SHEEP**

OMAHA, Aug. 25 (AP) — (U. S. D. A.) — Sheep 15,000; lambs steady to weak; sheep steady; range lambs \$4.75 to \$5.25; native lambs \$3.00 to \$5.25; ewes down from \$1.75.

**LAST DAY. . . .**  
**AUGUST FURNITURE SALE**

**Open until 8:30 p. m. Saturday for last-minute buyers!**

Saturday Night Ward's Great Nation-Wide August Furniture Sale comes to a close. Your last opportunity to share in the greatest furniture values this generation has ever seen. Make the most of the opportunity — Come Saturday — See! Buy! Save!



**2-Pc. JACQUARD SUITE**

Good-Looking, Comfortable, and Generously Sized!

When you see it, and sit in it, you'll agree that you couldn't ask for greater beauty, comfort, and construction at this price. The Davenport is comfortably sized, measuring 72 inches over all, and the Button-back Chair is deep and restful. Two-tone Jacquard velour covers both pieces and the reversible cushions. Serpentine fronts and covered stump panels are other features. Sale priced at

**\$39.95**

\$5 Down, \$5 Monthly Small Carrying Charge on Deferred Payments



**8-Pc. Dining Room Suite**

Popular Oriental Wood

Choose this suite for its style and expert construction! Four-way matched drawer fronts and Maple overlays are smart contrasts with the rich brown finish of the Oriental wood. The blocked-up legs on the Buffet, 6' extension Table and 6 Chairs have that sturdy appearance of much higher priced suites.

**49.95**

\$5.00 DOWN, \$5.50 MONTHLY Small Carrying Charge on Deferred Payments

**Foot Stools**

Colorful Velour Seats

**\$1.00**

Jacquard velour top 12 x 9 1/2 inches turned legs in mahogany finish.



**Washable Top Card Tables**

89c

Folding style Table with gay red or green enameled legs has harmonizing figured top and automatic locking brace.

**Indirect and Direct Light Reflector Lamps**

**\$2.95**

to **\$5.95**

Gold finish blended with black, lute or burgundy. Each type has indirect reflector. Direct indirect lamp has 3 candle type sockets, parchment shade.



**End Tables**

Beautiful Solid Walnut

79c

Gracefully shaped top is 11 x 22 inches. Turned legs and stretcher.



**Pay a SAFE PRICE for Your Electric Refrigerator**

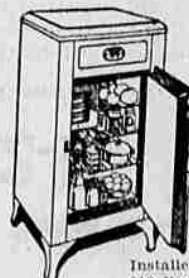
Don't Pay TOO LITTLE Don't Pay TOO MUCH

Big apartment building operators with all makes to choose from are now turning to TruKold — as many as a thousand TruKolds in a single order. TruKold is PRICED RIGHT to ASSURE not only all the important points but also real and lasting quality in every feature.

**\$7.50 a Month**

(This Figures Only 25¢ a Day)

Size shown is for 3 or 4 in family. Standard rated capacity. \$144.50 Delivered and Installed. \$7.50 Down, \$7.50 a Month. Larger sizes \$10 Down, \$10 a Month. Small Carrying Charge on Deferred Payments.



**Something New!**

**2-Room Heater**

Built for Weather Conditions in the South. Modern Construction Gives You More Heat and Saves Fuel.

**\$29.95**

Small Carrying Charge on Deferred Payments

Here's news! Ward's is pricing this new Birchmont Windsor at the lowest price we know of on any similar heater of equal size. Grained walnut porcelain enamel. Smart modern cabinet. Top, front and inner heating unit are all cast iron. 14 inch firepot. Duplex grates. Many other features save fuel, come in and see it.



\$3.00 Down \$5.00 Monthly

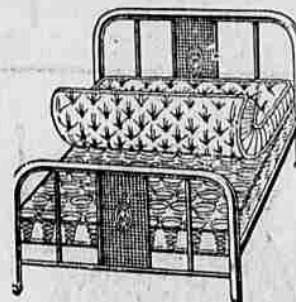
**August Bargains at One Low Price!**

**3-Piece Bed Outfit**

Full Size Bed—15 lb. Mattress—Coil Spring

**\$18.88**

Every piece meets Ward's requirements for quality, style and comfort! Brown enameled Steel Bed with 12-in. steel cane panels; cotton and felt Mattress; art ticking cover. 90-coil Spring.



**Bed Outfit**

Same as above except the bed is without cane panel.

**\$16.88**

**Special**

Genuine China cups and saucers. Each piece —

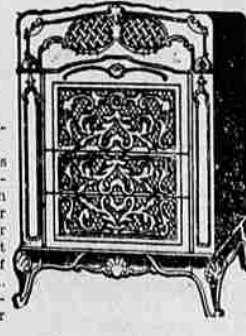
5c

**Heat for 6 Rooms**

Real Circulating Heat for Six or More Large Rooms at \$29 to \$25 Less Than Prices Elsewhere.

**\$69.95**

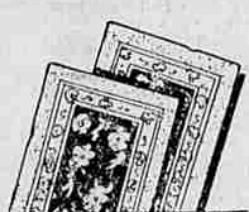
\$5 Down, \$7 Monthly, Small Carrying Charge on Deferred Payments. Famous LaSalle Windsor is Ward's largest and heaviest circulating heater — ample for 6 big rooms even in severe weather. All cast iron inner unit — great, thick, castings for years of service. Natural Walnut grained porcelain enamel cabinet of genuine Armeto rust-resisting iron. Extra heavy grates. Big 22-inch firepot. Burns hard or soft coal, or wood. Investigate!



**New and Used Stove Bargains**

- 2—Cast Wood Heaters with 23" wood space **\$49.50**
- 4—Wardola Heaters, four-room size **\$19.50**
- 2—Glophonic three-room size **\$19.95**
- 1—Large Coal Heater **\$29.50**
- 3—Utility Heaters **\$19.95**

Convenient Terms on All Heaters



**Console Mirror**

Of Genuine Plate Glass

**\$3.95**

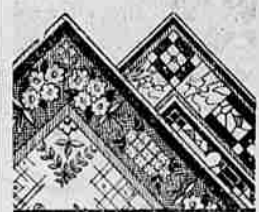
Smart style gilded ornamented frame on 12x24-inch etched mirror.



**Axminster Scatter Rugs**

Ea. **\$1.98**

Colorful all wool Axminsters — for doorways and halls. They're 27x30-inches — with bright colored patterns!



**Ward-O-Leum 9x12-ft. Rugs**

**\$3.98**

Tile and floral designs on standard weight enameled surface rugs. Stainproof, waterproof surface lightens work!

**Sturdy Chairs**

They're Ready to Paint

**69c**

Panel-back chairs of hardwood, for breakfast room or dinette.

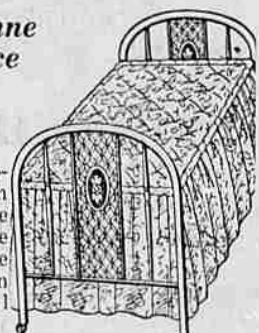


**Couch by Day! Double Bed by Night! Coil Day Bed and Pad**

With Floral Cretonne Cover and Flounce

**\$21.95**

One easy simple motion automatically converts this couch into a double bed! Enjoy the comfort of sound sleep on the resilient coil spring, and the 30-lb. roll-edge, all cotton mattress. Decorated steel cane panels.



**Heats 3 Big Rooms**

Every 4th Purchaser of a Circulating Heater at Ward's has Bought This Georgian Windsor.

**\$43.95**

\$3.00 Down, \$5.50 Monthly Small Carrying Charge on Deferred Payments

This year it's an even greater value. Thousands of homes will have no other heater. Burns any fuel — and less of it. All cast iron — one-piece 17-inch firepot — one-piece dome — heavy duplex grates — big feed door. Cabinet walnut grained porcelain enamel. Compare at our new low price!



**MONTGOMERY WARD & Co.**

1101-3 Washington Ave.

La Grande, Ore.

Phone Main 18

**New Arrivals**

**TIES**

Solid Colors

Patterns

**29c**

4 for \$1.00

