

# Wallowa Lake-Wonderland



Wallowa Lake

## Wallowa Lake Wonderland Attracts Many

Union and Wallowa counties are both rich in scenic resorts of which one, Wallowa Lake Wonderland, Inc., is gaining a remarkable amount of prestige throughout the nation. Another leading scenic area, in the North Powder lake district, is destined to attract thousands of tourists in the future, it is believed.

Wallowa lake, about four and a half miles long and a mile and a half wide, is situated south of Joseph, Oregon, and is about 75 miles from La Grande over the beautiful La Grande-Wallowa lake highway, one of the finest pieces of road construction in the state.

Peaks 10,000 Feet High  
The lake, surrounded by majestic mountains, is not the only attraction in the wonderland, however, for in the back country scores of lakes, two mountains more than 10,000 feet in height, a glacier, and many other attractions exist, to be reached by hikers or saddle horses.

The Wallowa lake country was, incidentally, the old stamping ground of Chief Joseph and his Nez Perce Indians, and Indian legends still tell of a monster that dwells in the depths of the body of water that is ready to prey upon anyone who approaches its hiding place. An Indian will hardly stand at the edge of the beautiful lake, let alone enter a boat that would cruise over its placid surface.

The term "Switzerland of America" has been attached to this part of Wallowa county and scores of persons from all parts of the world have declared that in scenic qualities it is unmatched anywhere over the globe. Motion picture directors have been attracted to its shores because of the remarkable scenery offered and thousands of pleasure seekers annually enter its domains for a few days or a month's period of recreation.

Douglas, Moccasin and Mirror lakes are among the more popular. Moccasin is 12 miles from the lake, Douglas is 12 miles from the lake, Mirror is 10 miles from Wallowa lake and Mirror connects with Moccasin about half a mile farther on.

Mighty Mountains  
From Moccasin lake the climb up Eagle Cap, nearly 10,000 feet high, is usually started. Eagle Cap, while in Union county, is a part of the Wallowa mountains and for many years was believed to be the highest peak in Eastern Oregon with its 9,675 altitude. In the last few years, however, surveys have shown that Legion mountain is the highest, at 10,076 feet with Matterhorn second with 10,051. Eagle Cap is third.

One Glacier Exists  
In this territory is found the only glacier in Eastern Oregon, and hundreds of persons visit this yearly.

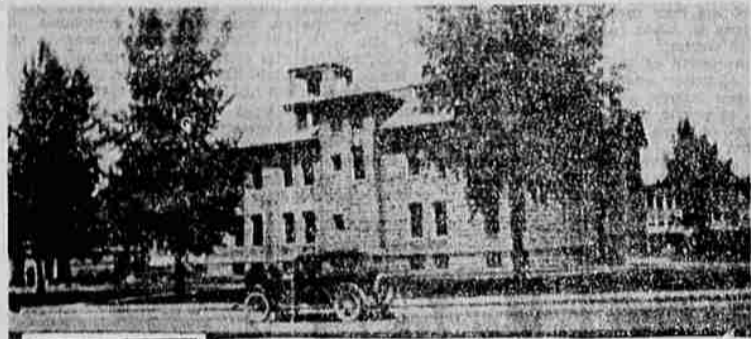
Still another trip that is attracting more and more attention is to Buck Horn springs and the Box canyon of the Snake river, which is the world's deepest canyon. Surveys have proven that the Box canyon is 7,500 feet in depth, several hundred more than the Grand Canyon of the Colorado.

At Buck Horn springs, 62 miles by saddle horse from Wallowa lake, one may view 10 miles of the canyon, the Seven Devils mountains along the Snake, and as far into Washington as Astoria. It has been said that from the peaks in the Wallowa mountains one may, on a clear day and if looking through a telescope, see the Pacific ocean.

### Complete Typewriter Service Guaranteed

E. C. Tuckey, owner and manager of the Tuckey Typewriter company, is located at 109 Depot street. Mr. Tuckey has been a resident of La Grande for many years. Before opening up his new store on Depot street he did business in the Gardner building. Mr. Tuckey is a specialist in typewriter repair work and guarantees all his work without limit.

New and rebuilt typewriters and adding machines are his largest stock and aside from the standard machines of various makes, he also handles portable typewriters, ribbon, etc.



Enterprise Courthouse

Wallowa county, in the extreme northeastern corner of the state, has an area of more than three thousand square miles, of which about one-third is included in the lofty and rugged Wallowa Mountains — often called "The Switzerland of America." The La Grande-Wallowa lake highway is a scenic highway of first rank, traversing the Grande Ronde valley as far as Elgin, crossing Minam hill, and then winding down through Minam Canyon and up the Wallowa Canyon. Coming into the wide Wallowa valley, magnificent meadow and mountain views greet the motorist, as he continues on through Enterprise and Joseph to Wallowa Lake, nestling at the foot of snow-capped peaks.

## FUTURE FOR POULTRY AND DAIRY INDUSTRY FAVORABLE

### Local Co-operative Creamery Association Explains Plan of Organization; Policy Controlled by Board of Directors

Affiliated with Interstate Associated Creameries

Although the values of all farm products are much less than for many years, the outlook for the future of the dairy and poultry farmer in the Grande Ronde valley is more favorable than many other branches of the farming industry. This is the opinion of the Grande Ronde Co-operative Creamery association. The price of dairy and poultry products may fluctuate rapidly with less serious loss to producers than any other product from the farm by reason that butter and eggs are produced the year around and marketed day by day as produced. While with grain and other products, harvest time usually shows the producer a loss or a gain for his year's efforts. Dairy and poultry feeds can be produced economically in all parts of the county, and by being fed greater profits can be realized by the producer.

The Grande Ronde Co-operative Creamery association was organized and began business on February 2, 1931, although prices were extremely low during their first year's operation, the association reports a successful year. Perhaps one of the factors that contributed to their success was being located in La Grande, which enabled them to market much of their products locally, for which they received greater profits by reason of the saving in freight and handling charges which are necessary when the products are shipped to other markets. They marketed approximately 125,000 pounds of butter locally, or about one-fourth of their output for the year, the remainder being marketed through the Interstate Associated Creameries at Portland, Oregon, of which they are a member. They also marketed the product of the Union County Poultry association, which became affiliated with them on April 1, 1931. The poultry association produced and sold locally almost 50,000 dozen eggs.


Plan of Organization  
By the payment of \$1.00 for a certificate of membership a producer becomes a member of the association and is entitled to vote, participate in the earnings of the plant and all other benefits of the association. The board of six directors is elected from the membership for a period of two years; three directors being elected at the annual meeting of the association each year. The directors are custodians of the business of the association and are



### GIFT SHOP

DINNERWARE  
POTTERY  
GLASSWARE  
KITCHENWARE

MELVILLE'S  
Main 439 1429 Adams

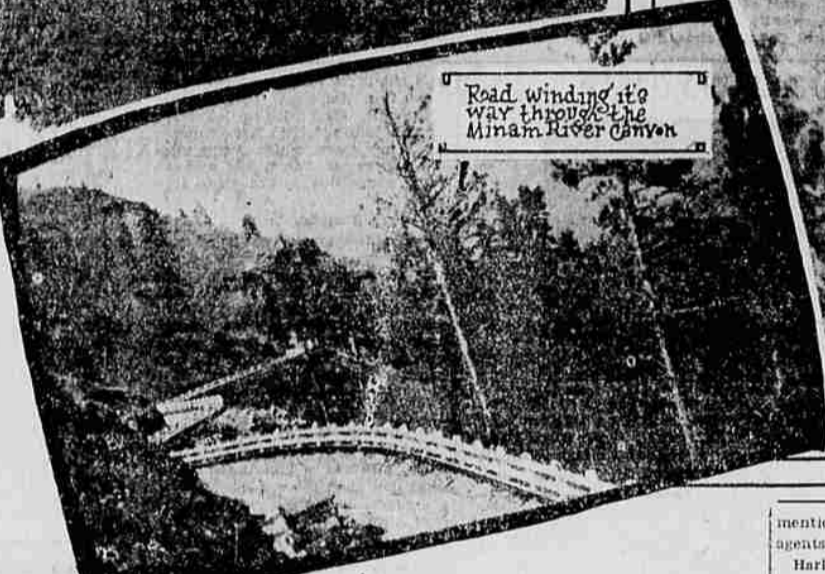


### Finished Monuments

Native and Imported Granite and Marble

### CEMETERY Memorial Works

C. H. McCURE, Prop.  
Main 355 2213 Adams



Road winding its way through the Minam River Canyon



Wallowa Falls

## Grain Buyers Show Increase In Business

More and more people are appreciating the advantage of being able to purchase everything possible from the local merchant. Marshall Grain company, wholesale and retail buyers of grain and poultry, located at 1415 Jefferson avenue, maintain that the public appreciate the extra value they receive by patronizing those stores who buy from the local producer, in a two-fold manner. They are creating business for the grower and the buyer and receiving a far better line of commodity than they could elsewhere.

The Marshall Grain company's branch store in La Grande opened here on Oct. 15, 1931, and has enjoyed a steady increase of business from the start. The main office is located at Baker and the company has branch offices at North Powder and La Grande. Throughout their whole career, they have stressed the fact of buying their products from local producers at all times, and this they do in all their poultry, dairy feeds, orchard supplies and seeds.

At the main headquarters in Baker, Marshall Grain company manufactures a feed which is of exceptional quality. This is sold in their three stores. Aside from the mentioned commodities, they are agents for Royal Coal.

## A Great Difference

There is as great a difference between the modern Funeral Director and the "Undertaker" of thirty years ago, as there is between his beautiful Funeral Coach and the plume-decked horse-drawn hearse of other days. Scientific training and a new conception of SERVICE have wrought this change, which is fully reflected in the management of our Modern Funeral Home.

### WALKERS FUNERAL HOME

FREE AMBULANCE SERVICE  
PHONE MAIN 42  
LADY ATTENDANT  
*A Service within the means of all.*

## Root Beer Stands Do Good Business

La Grande's thirst keeps the two root beer stands of the A & R Root Beer company busy during the summer months. "A nickel a mug" is the standard price adopted by the A & R. The familiar orange and black coloring of the two company stands is like an oasis in the desert to the tourist.

### Royal Poultry & Dairy Feeds

We Buy and Sell Poultry

Apex Ladders	55c per foot
Portland Ladders	35c per foot
Atlas Ladders	30c per foot

BERRY HALLOCKS  
NICOTINE SULPHATE  
ARSENIC OF LEAD

### Marshall Grain Company

1415 Jefferson Main 826

## SENSATIONAL BOOK VALUES!

Five Important Books For Home and School \$1.00 Each

A brand new DICTIONARY with 1930 census. Bound in two colors — maroon and dark blue morocco finish artificial leather — bound in semi-flexible style with rounded corners.

SHAKESPEARE'S WORKS, complete in one volume, with the famous temple notes. Bound in dark red imitation leather, flexible binding with rounded corners. Printed from excellent plates on Bible paper.

A beautiful new King James HOLY BIBLE. Bound in a semi-flexible dark blue imitation morocco with round corners and gold stamping. Large clear type printed on fine white paper.

ANSWERS TO QUESTIONS. A book of 5,000 questions classified under 70 general heads, such as art, history, radio, etc. It is a veritable cross-section of human curiosity and general knowledge.

Just out, this remarkable book — MINUTE BIOGRAPHERS, 150 illustrations and 150 great lives. Each page bears the authentic portrait of a great historical character, from Aesop to P. T. Barnum.

### La Grande Book & Stationery Co.

"Service Station for Home and Office"  
1114 Adams Ave. Main 90