

SCOTS REPLACE 31ST AT CHAPEL

Three Hundred Grimy-Faced Americans Conclude 15-Day Vigil.

By James P. Howe
(Copyright, 1932, By The Associated Press)

SHANGHAI, Feb. 25 (AP)—Three hundred grimy-faced, unshaven and tired American soldiers of the 31st Infantry came out of the international settlement defense lines this afternoon after 15 days in front of shell-torn Chapel.

Their eyes were bloodshot and swollen from lack of sleep, and they made a concerted rush for baths, shaves and "good old shut-eye."

For the next few days the boys will figuratively hang up a "don't disturb" sign and hibernate. They began that program tonight when they rolled into their bunks.

The Americans were replaced in the most dangerous position within the settlement lines by the Scottish Argyll and Sutherland "Ladies from Hell." The bare-legged, pink-kneed and killed Brits went in for their share of the uncertainties along the Chapel line.

The Americans had earned their rest. The boys had come up only recently from Manila where tropical breezes blow incessantly. Since their occupation of the danger zone they have been breathing biting winds within their sandbag barricades. Their position was most dangerous because they had the Chinese facing them and the Japanese on their right. As a result they saw plenty of action from within their lines.

Many times machine gun bullets rained over their sector and shells from the Chinese artillery west of Chapel often ripped overhead, headed for the Japanese positions in Hong-kew park.

The doughboys mixed barricade piling with changing to long underwear and overcoats, but they came out today tired yet enthusiastic about their jobs.

CHICAGO LIVESTOCK

CHICAGO, Feb. 25 (AP)—(U. S. D. A.)—Hogs 32,000; slow, steady to weak; 170-210 lbs. \$4.00; \$4.15; 140-160 lbs. \$3.75; \$4.00.
Cattle 15,000; steers and yearlings strong to 25c higher; beef cows \$3.00; \$3.75; bulls steady to strong; steers and yearlings \$5.00; \$7.25.
Sheep 17,000; about steady; good to choice fed lambs \$6.25; \$6.50 to packers; fat ewes \$3.00; \$3.50.

BUTTERFAT

SAN FRANCISCO, Feb. 25 (AP)—Butterfat f. o. b. San Francisco 26c.

More Plantings Of Vegetables Due This Year

CORVALLIS, Ore., Feb. 25 (AP)—Probable increased acreages in Oregon of asparagus, cabbage, cantaloupes, sweet corn, cucumbers, onions, green peas, spinach and watermelons, and about the same plantings of snap beans, beets, carrots, cauliflower, celery, lettuce and tomatoes, are reported in the vegetable and melon outlook report issued today by the Oregon State college extension service.

Prices for truck crops are generally lower than the year before, the report points out, but the general price level for these crops was relatively higher than for other annual crops. A tendency for growers to shift to truck crops in 1932 is cited as a probability, and estimated plantings in Oregon bear this out.

The demand for canning vegetables in Oregon was extremely poor in 1932 with large reductions in the pack of beets, carrots, pumpkins, string beans, tomatoes and pickles.

A record low yield and a 6 per cent smaller acreage of onions in 1931 resulted in high prices for the crop, and this is regarded as likely to stimulate plantings in 1932. Estimates indicate a ten per cent larger planting in Oregon this year.

The shortage of tomatoes in Northern California resulted in exceptionally high prices for Oregon tomatoes in 1931. In the previous year Northern California had a big crop and prices in Oregon were low. No information is available on California plantings of late tomatoes but the county reports indicate that Oregon's acreage will remain about the same.

GAS PRICES WEAKEN

PORTLAND, Ore., Feb. 25 (AP)—Retail gasoline prices slipped another cent today with motor fuel generally quoted at from 12 to 13 cents a gallon. Some service stations displayed 11-cent cards.

Federal Reserve Bank Reduces Its Rediscount Rate

NEW YORK, Feb. 25 (AP)—The New York federal reserve bank reduced its rediscount rate to 3 per cent from 3 1/2 today.

NEW YORK, Feb. 25 (AP)—The stock market resisted mild flurries of selling today and while the list ruled moderately lower much of the day short covering in the last few minutes brought it back virtually to the closing levels of the previous session. The closing tone was steady. Sales were only about 1,100,000 shares.

Active buying of United Aircraft, which closed a point higher, revived the recent gossip in some brokerage quarters over "war brides," although recent efforts to bid up shares on that basis were discredited in most quarters in Wall street. U. S. Steel closed a fraction higher, after selling off 1 1/2 temporarily. American Telephone closed about unchanged, after a momentary drop of 2 1/2 points.

Auturn was weak early tumbling to a new low for 1932, but it closed at 92, off 6 1/2 points net. Union Carbide lost 1/2 point, reflecting reduction of the annual dividend basis to \$2 from \$2.00.

PORTLAND LIVESTOCK

PORTLAND, Feb. 25 (AP)—Cattle 125, including a 34 through; calves 15; nominally steady. Steers 900 to 900 pounds, good \$5.75; \$6.25, medium \$4.75; \$5.25, common \$3.50; \$4.75; 900 to 1100 lbs. good \$5.75; \$6.25, medium \$4.75; \$5.75, common \$3.50; \$4.75; 1100-1300 lbs. good \$5.25; \$5.75, medium \$3.50; \$4.75, \$5.25, Heifers 550-850 lbs. good \$5.25; \$5.75, medium \$4.25; \$5.25, common \$3.00; \$4.25. Cows good \$4.25; \$4.75, common and medium \$3.00; \$4.25, low cutter and cutter \$1.50; \$3.00. Bulls yearlings excluded, good and choice (beef) \$3.25; \$3.75, cutter, common and medium \$2.00; \$3.25. Vealers milk fed good and choice \$7.50; \$8.50, medium \$6.00; \$7.00, cull and common \$4.00; \$5.00. Calves 250-500 lbs. good and choice \$6.00; \$7.50, common and medium \$4.00; \$6.00.
Hogs 325; about steady. Light lights 140-160 lbs. good and choice \$3.75; \$4.00; lightweights 160-180 lbs. good and choice \$4.50; \$4.80; 180-200 lbs. good and choice \$4.50; \$4.80; medium weight, 200-220 pounds good and choice \$3.75; \$4.00, 220-250 lbs. good and choice \$3.05; \$4.50; heavyweights 250-290 lbs. good and choice \$3.50; \$4.35, 290-350 lbs. good and choice \$3.25; \$3.85; packing sows 275-500 lbs. medium and good \$3.00; \$3.75. Feeders and stockers 70-130 lbs. good and choice \$3.50; \$4.00.
Sheep and lambs 50; fully steady. Lambs 90 lbs. down good and choice \$5.00; \$5.50, medium \$4.00; \$5.00, all weights common \$3.00; \$4.00. Yearling wethers 90-110 lbs. medium to choice \$3.00; \$4.00. Ewes 120 lbs. medium to choice \$2.00; \$2.60, 120-150 lbs. medium to choice \$1.50; \$2.00, all weights, cull to common \$1.00; \$1.50.

POLITICS IN COUNTY ARE WARMING UP

(Continued From Page One)

With District Attorney Carl Helm and Orval Millard, young attorney, to vie in the Republican primary for the nomination for district attorney, so far no candidates have been put forth by the Democrats for this district position.
County Commissioner W. W. Stevens, Republican, of Union; Sheriff Jesse Breshers, Republican, of La Grande, and former Police Chief A. C. "Clint" Hayes, Democrat, of La Grande, have all announced their candidacies. Mr. Stevens and Mr. Breshers seek re-election and Mr. Hayes seeks nomination for sheriff.

It is generally expected that all incumbents will be candidates for re-election in the county and district.
BAKER CANDIDATES ACTIVE
BAKER, Ore., Feb. 25 (Special)—R. P. Anderson and Adam Kolb, both Democrats, declared their intention of seeking the nomination for sheriff and county commissioner, respectively, in the May primary election by preparing their papers in the county clerk's office Tuesday.

Their nominating petitions will be filed when they have secured a sufficient number of signatures.
Anderson, who was sheriff of Baker county for eight years, will oppose Fred Spence, of Haines, in the primaries. Henry McKinley, incumbent, is a candidate for the Republican nomination and thus far is unopposed.
Kolb is the only Democrat to declare his intention of seeking the nomination for the position now held by Armand Perkins, Republican.
Earl F. West filed today on the Democratic ticket for county coroner.

OMAHA SHEEP

OMAHA, Feb. 25 (AP)—(U. S. D. A.)—Sheep 16,000; steady, feeders strong; good and choice fed wooled lambs \$5.75; \$6.10, ewes eligible up to \$3.25; feeding lambs \$5.55; shearing lambs up to \$5.75.

COLDS

RUB Musterole well into your chest and throat—almost instantly you feel easier. Repeat the Musterole-rub once an hour for five hours... what a glorious relief!

These good old-fashioned cold remedies—oil of mustard, menthol, camphor—are mixed with other valuable ingredients in Musterole to make it what doctors call a "counter-irritant" because it gets action and is not just a salve.

It penetrates and stimulates blood circulation and helps to draw out infection and pain. Used by millions for 20 years. Recommended by many doctors and nurses. All druggists.

To Mothers—Musterole is also made in milder form for babies and small children. Ask for Children's Musterole.



BETTER THAN A MUSTARD PASTER

NEW

Hollywood

SANDALS

For Spring

\$2.49

New York Store

Storage Demand Causes Shortage In Egg Markets

PORTLAND, Feb. 25 (AP)—Increase in storage holdings of eggs is considered a most vital factor in the prevailing trade trend. Demand for eggs to go into storage is actually creating a shortage of supplies in the home territory; in fact much the same situation is reflected along the Pacific slope.

Egg market prices are showing a firmer tendency along the coast than in other sections of the country. Prices are stiffer all around and adds to further strengthening of the situation.

Market for butter was without quotable change for the day either on the exchange or on the open market for cubes. Demand appears best for the undergrades with a fair call for top scores.

Conditions appear about steady in the market for live chickens with no change in values except for here and there some weakening in heavy weight hens.

General maintenance of dressed turkey market prices here is reflected in a cleanup of current offerings. Demand continues best for hens with sales of 15 up to 20c. No. 2 birds around 15c generally.

Well held prices are showing in the market for onions both here and at Willamette valley sources. Additional carlot purchases at \$4 are confirmed. Local call is best for 2s and for boilers.

First offerings of fresh lima beans of the season are here. The initial supply of the season was reported from Florida, priced 17 1/2 @ 20c lb.

Summer squash of real quality is being offered here and is finding a rather good call around 10 @ 12c lb. The stock is from Florida and has a very good appearance.

Acute scarcity of cauliflower continues with almost general advances in the price. Some very good stock is again arriving from the Roseburg section. Sales \$1.75 to \$1.90 crate.

Notes of wholesale trading: What is believed to be about the last hot-house tomatoes of the season were reported sold at \$2.25 crate for small stuff.

Eastern cucumbers are still arriving and selling \$2.25 doz. Some locals \$2.00 @ \$2.75 dozen.

Fresh arrivals of California asparagus due Friday and quality is expected to be better.

Imperial valley green peas are due Sunday. In meantime Mexicans are very scarce.

Country killed veal are down with weaker market.

Dressed hogs are merely holding. Lambs are firm.

Great increase in demand for onion sets with prices up.

LIVERPOOL WHEAT

LIVERPOOL, Feb. 25 (AP)—Wheat closed: March 58 1/2; May 61 1/2; July 63 1/2; Oct. 65 1/2. Exchange \$3.48.

NATIONS AGREE UNANIMOUSLY ON DISARM BASIS

(Continued From Page One)

of all armed forces; setting out from the principle of equality for all; and "Convinced that the nation of general and complete disarmament answered the sincere aspirations of the masses toward peace."

"The conference decides to base its work on the principle of general and complete disarmament."

The Russian resolution was offered as a substitute for that of Sir John Simon, British delegate, which supported the American, French, German, and other proposals which declared in favor of accepting the draft convention as the basis for future discussions.

When she was placed in her cell, Mrs. Judd, a shudder shaking her shoulders, remarked, "I visited a lot of dark caves when I lived in Mexico and wasn't afraid, but this dark place scares me to death."

The condemned row is lighted by three dim bulbs. It has been occupied by only one other woman in the history of the state, Eva Dugan, who was hanged here in 1930 for the murder of a reclus near Tucson.

WOOL MARKET

PORTLAND, Feb. 25 (AP)—Normal easiness of the wool trade reflected just before the opening of the shearing season, is again showing, with late trading at eastern points showing a general lack of snap and prices ranging lower than a couple of weeks ago.

Opening of the wool shearing season is scheduled for early March at Pacific northwest points. Usually, the Yakima season starts March 10, depending upon immediate weather conditions. It is possible shearing may be done even earlier this year.

While there usually is more or less contracting of wool in the eastern section of the Pacific northwest prior to shearing time, practically none has been confirmed this year, and none has been reported in the Willamette valley.

There has been a lull in call for pre-shearing advanced, according to local operators, indicating that those who had to borrow money already have their needs.

SILVER

NEW YORK, Feb. 25 (AP)—Bar silver easier and 1/4c lower at 30 3/4c.

SPRING 1932 SHOWING

COATS

for Sport—
for Dress—

\$9.90 to \$14.75

•NEWEST POLO types—smartly tailored with wide belts...
•Good-to-look-at, and smart-to-wear TWEEDS... the sort you'd expect to be expensive!
•Distinctive ROUGH WOOLENS... boucles in 1932's slenderizing "fit-the-figure" silhouette!

LAY-AWAY PLAN
a small deposit holds your selection!

J. C. PENNEY CO.

LA GRANDE OREGON

LIBERTY

DIRECTION SENIOR & JUNIOR MERCY

SEE IT...
TONIGHT
OR
You'll miss a thrilling part of YOUR life if you miss the shocking reality of

UNION DEPOT

starring Douglas Fairbanks Jr. with Joan Blondell
the screen's devil-may-care love team.

SEE IT TODAY

BEWARE! HE COMES TOMORROW!



The Man of a thousand characters in a picture that will live in your memory long after many others have been forgotten.

Edward G. ROBINSON

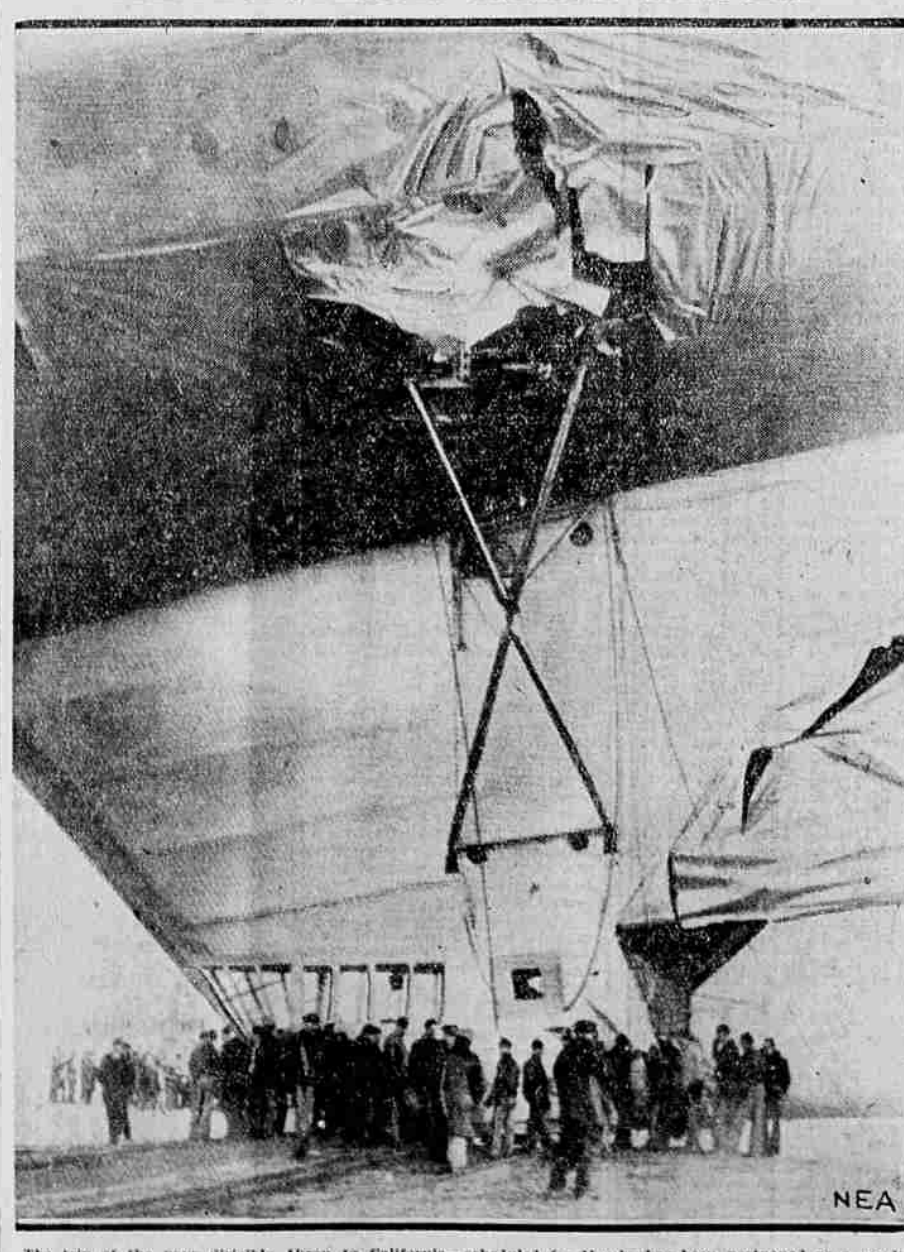
THE HATCHET MAN

with Loretta Young

Boys - Girls - Kiddies Matinee
SATURDAY 5c 11:00 A. M. TILL MORNING 3:00 P. M.
Regular Show and 'Heroes of The Flames'

New York Store

TELEPHOTO DEPICTS CRASH OF GIANT SHIP



The trip of the navy dirigible Akron to California—scheduled for March—has been postponed as a result of serious damage suffered by the airship in a sudden gust of wind while taxiing the hangar at Lakehurst, N. J. This first picture, transmitted by telephoto from New York to San Francisco and rushed to the Observer shows the big gashes torn in the stern of the Akron.

WINNIE JUDD TO HANG ON MAY 11

(Continued From Page One)

Samuelson, but that she declined to answer most of his questions.

Says She Had Accompliee
In answer to the query, "Did you have an accomplice?" The sheriff said Mrs. Judd replied: "Yes I had an accomplice." She refused, however, to name her purported accomplice.

In court yesterday when she was sentenced, Mrs. Judd denied authorship of a letter said by her husband, Dr. William C. Judd, to have been written by her, in which an alleged accomplice was named.

When she was placed in her cell, Mrs. Judd, a shudder shaking her shoulders, remarked, "I visited a lot of dark caves when I lived in Mexico and wasn't afraid, but this dark place scares me to death."

The condemned row is lighted by three dim bulbs. It has been occupied by only one other woman in the history of the state, Eva Dugan, who was hanged here in 1930 for the murder of a reclus near Tucson.

SUGAR AND FLOUR

PORTLAND, Feb. 25 (AP)—Sugar—Cane; granulated \$4.40 100 lbs., best \$4.30.
Domestic flour—Selling price: de-livered; patent 40s \$5.60; do 98s \$5.40; bakers' bluestem \$5.20; soft white flour \$4.50 @ \$4.80; rye \$5.75 @ \$5.90.

WOOL REPORT

BOSTON, Feb. 25 (AP)—A moderate volume of wool in the aggregate is being sold by a few houses. The bulk of sales are on 64's and finer territory and Texas wool, although an occasional buyer takes a little 58-60's territory wools. Asking prices are mostly unchanged, but owing to slight concessions that are available as a result of continued dullness, actual selling prices are inclined to the low sides of the ranges quoted last week.

PORTLAND CASH

PORTLAND, Ore., Feb. 25 (AP)—Cash wheat: Big Bend bluestem 72c. Soft white 60c.
Western white 50c.
Hard winter 58c.
Northern spring 58c.
Western red 58c.
Oats: No. 2 white \$23.00.
Today's car receipts: wheat flour 9; corn 3; hay 1.

MARKET NEWS OF THE DAY

CHICAGO WHEAT				
	Open	High	Low	Close
Mar.	.57 1/2	.58 1/2	.57 1/2	.58 1/2
May	.61 1/2 @ 3/4	.62 1/2	.61 1/2	.62 @ .62 1/2
July	.62 1/2 @ .63 1/2	.63 1/2	.62 1/2 @ 3/4	.63 1/2 @ 3/4
Sept.	.61 1/2	.65 1/2	.61 1/2	.65 @ .65 1/2

PORTLAND WHEAT				
	Open	High	Low	Close
May	.61 1/2	.61 1/2	.61 1/2	.61 1/2
July	.61 1/2	.61 1/2	.61 1/2	.61 1/2
Sept.	.61 1/2	.61 1/2	.61 1/2	.61 1/2

CHICAGO CORN				
	Open	High	Low	Close
Mar.	.35 1/2 @ .36	.36 1/2	.35 1/2 @ 3/4	.36 @ .36 1/2
May	.40 @ .40 1/2	.40 1/2	.39 1/2	.40 @ .40 1/2
July	.42 1/2 @ 3/4	.42 1/2	.42 1/2	.42 1/2 @ 3/4
Sept.	.43 1/2	.44 1/2	.43 1/2 @ 3/4	.44