

SOCIETY NEWS

Miss Bea Duke, Society Editor Telephone Main 670 Until 9:30 a. m.

Mrs. S. B. Morgan Elected Head Of Neighborhood Club

Mrs. S. B. Morgan was elected president of the La Grande Neighborhood Club for 1931-32 at the 38th annual meeting held yesterday afternoon at 2 o'clock at the La Grande hotel.

Loan Fund Musical Reception May 28

The scholarship loan fund committee of the Neighborhood Club is sponsoring a musical reception to be held Thursday evening at the home of Dr. and Mrs. L. Richardson from 8 until 10 o'clock.

Anthony, Miss Ida McMeekin and Mrs. R. J. Brack.

A large group of spectators attended the recital in which the following took part: Betha, Earl Rosemary, Alexander, Malcolm Shepherd, Marjorie Smith, Tommy Lloyd, Eleanor Ashman, Raymond McClelland, Joan Miller and Eugene Harcot.

Menus of The Day

- By Mrs. Alexander George CHINESE COOKIES Afternoon Refreshments Shrimp Salad Cheese Wafers Cutlet Fruit Juices Chinese Cookies Salted Nuts

Good-bye Broadway, Hello Hollywood!



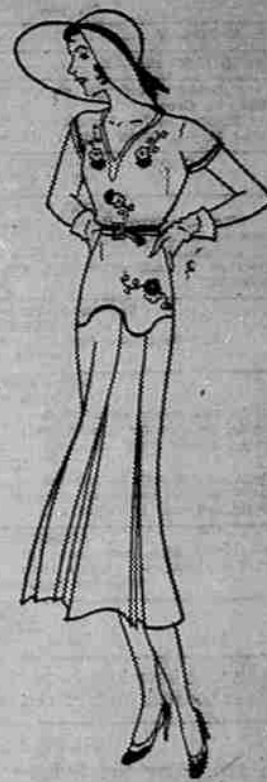
Another little Broadway star who'll twinkle in Hollywood is blonde and winsome Noel Francis, musical comedy favorite. Here you see her in a charming pose. And—don't let this unnerve you—she's going to be cast as a siren in her next picture!

Hospital Sites Question Keeps Oregon Guessing

WASHINGTON, May 27 (AP)—By the end of this week it is expected here, definite action will have been taken on the selection of a site for the \$2,000,000 national soldiers home that is to go to the Pacific Northwest.

Summer Fashions in Shantung & Flat Crepes

These flat crepe summer frocks are developed in white and pastel shades including light pink, psyche, maize, orchid, peach and sky blue, all hand embroidered or hand fagoted. Just the thing for golf or tennis.



The Shantungs are jacket suits—white dresses with print jackets and others in pastel shades with jackets to match.

\$10

A few Shantung Frocks at \$5.95—Pastel shades and white.

PUTMAN'S Exclusive Ready-to-Wear & Millinery

Women Golfers To Play Baker Club

Twelve women members of the La Grande country club will go to Baker Friday to meet a group of Baker golfers in a tournament.

Restriction Put On Timber Sales Of U. S. Forests

WASHINGTON, May 27 (AP)—In line with the policy approved by President Hoover, temporary restriction of timber sales from the national forests, to relieve the lumber industry depression, has been ordered by the forest service.

COVE PERSONALS

By Mrs. Leona Price (Observer Correspondent) COVE, Ore. (Special)—Mrs. L. M. Laird returned from Pendleton Monday. Mrs. Laird has been with her daughter, Mrs. C. D. Richardson and family for about two weeks.

COVE PERSONALS

By Mrs. Leona Price (Observer Correspondent) COVE, Ore. (Special)—Mrs. L. M. Laird returned from Pendleton Monday. Mrs. Laird has been with her daughter, Mrs. C. D. Richardson and family for about two weeks.

Restriction Put On Timber Sales Of U. S. Forests

WASHINGTON, May 27 (AP)—In line with the policy approved by President Hoover, temporary restriction of timber sales from the national forests, to relieve the lumber industry depression, has been ordered by the forest service.

Restriction Put On Timber Sales Of U. S. Forests

WASHINGTON, May 27 (AP)—In line with the policy approved by President Hoover, temporary restriction of timber sales from the national forests, to relieve the lumber industry depression, has been ordered by the forest service.

BRUCE DENNIS SELLS 2 PAPERS

Continued From Page One) Mr. Dennis said he would remain in Klamath Falls for some time, according to his sheep and real estate interests, but later in the year it is probably that with Mrs. Dennis and their son he will visit several points in Europe that he has long wanted to see.

BRUCE DENNIS SELLS 2 PAPERS

Continued From Page One) Mr. Dennis said he would remain in Klamath Falls for some time, according to his sheep and real estate interests, but later in the year it is probably that with Mrs. Dennis and their son he will visit several points in Europe that he has long wanted to see.

Mrs. William Pearce Entertains Club

Mrs. William Pearce was hostess to a group of friends yesterday afternoon, entertaining her club at her home. The afternoon was spent sewing and quilting.

W. B. A. Initiates Two New Members

Miss Marjorie Dial and Mrs. Grace Stiver initiated into the Women's Benefit Association at a meeting held last night at the Odd Fellows hall at 7:30.

W. B. A. Initiates Two New Members

Miss Marjorie Dial and Mrs. Grace Stiver initiated into the Women's Benefit Association at a meeting held last night at the Odd Fellows hall at 7:30.

W. B. A. Initiates Two New Members

Miss Marjorie Dial and Mrs. Grace Stiver initiated into the Women's Benefit Association at a meeting held last night at the Odd Fellows hall at 7:30.

W. B. A. Initiates Two New Members

Miss Marjorie Dial and Mrs. Grace Stiver initiated into the Women's Benefit Association at a meeting held last night at the Odd Fellows hall at 7:30.

W. B. A. Initiates Two New Members

Miss Marjorie Dial and Mrs. Grace Stiver initiated into the Women's Benefit Association at a meeting held last night at the Odd Fellows hall at 7:30.

W. B. A. Initiates Two New Members

Miss Marjorie Dial and Mrs. Grace Stiver initiated into the Women's Benefit Association at a meeting held last night at the Odd Fellows hall at 7:30.

W. B. A. Initiates Two New Members

Miss Marjorie Dial and Mrs. Grace Stiver initiated into the Women's Benefit Association at a meeting held last night at the Odd Fellows hall at 7:30.

W. B. A. Initiates Two New Members

Miss Marjorie Dial and Mrs. Grace Stiver initiated into the Women's Benefit Association at a meeting held last night at the Odd Fellows hall at 7:30.

W. B. A. Initiates Two New Members

Miss Marjorie Dial and Mrs. Grace Stiver initiated into the Women's Benefit Association at a meeting held last night at the Odd Fellows hall at 7:30.

W. B. A. Initiates Two New Members

Miss Marjorie Dial and Mrs. Grace Stiver initiated into the Women's Benefit Association at a meeting held last night at the Odd Fellows hall at 7:30.

W. B. A. Initiates Two New Members

Miss Marjorie Dial and Mrs. Grace Stiver initiated into the Women's Benefit Association at a meeting held last night at the Odd Fellows hall at 7:30.

Social Calendar

- Wednesday, May 27 7:00 Bridge dinner, Mr. and Mrs. Bob Williamson. 8:00 Eastern Star, at the Masonic hall. 8:00 La Grande High school commencement at L. D. S. tabernacle.

Social Calendar

- Thursday, May 28 11:00 Friendly Corner club, with Mrs. Walter Swart. 1:30 Au Pair, with Mrs. Grant Swaberg. 2:00 Fifty-Fifty club, with Mrs. Henry Moore. 3:00 Miniature club, with Mrs. William Bailey. 2:00 Diversity club, with Mrs. Otis Huff. 2:00 Jolly Bridge club, with Mrs. Raymond O. Williams. 8:00 Neighborhood club scholarship loan reception and musicale, at the home of Mrs. A. L. Richardson.

Social Calendar

- Friday, May 29 La Grande country club women golfers, tournament at Baker. 2:00 Eastern Star, at the Masonic hall. 7:00 Bid'em and Lose'em no-hostess dinner, at the Sacajawea Inn. 8:00 Loyal Order of Moose entertain Women of the Mooseheart Legion at the Moose hall. Saturday, May 30 Memorial day. Monday, June 1 1:00 Monday bridge, with Mrs. Julia Holmes. 2:00 Eastern Star Social club, with Mrs. Fred H. Kiddle. 8:00 Costume recital by pupils of Miss Hilda Anthony and Miss Ida McMeekin, La Grande hotel ballroom.

Social Calendar

- Tuesday, June 2 2:00 M. E. club, with Mrs. Gilbert Hunter.

Social Calendar

- Wednesday, June 3 1:00 Monday bridge, with Mrs. Julia Holmes. 2:00 Eastern Star Social club, with Mrs. Fred H. Kiddle. 8:00 Costume recital by pupils of Miss Hilda Anthony and Miss Ida McMeekin, La Grande hotel ballroom.

Social Calendar

- Thursday, June 4 1:00 Monday bridge, with Mrs. Julia Holmes. 2:00 Eastern Star Social club, with Mrs. Fred H. Kiddle. 8:00 Costume recital by pupils of Miss Hilda Anthony and Miss Ida McMeekin, La Grande hotel ballroom.

MEMORIAL DAY

Cemetery Boxes filled with varieties of plants All Prices Also Seasonal Cut Flowers and Potted Plants. Bedding Plants of all kinds at Our Greenhouse.

ROHAN'S Deliveries Within City Limits — Free Bonded F.T.D. Member Phone Main 136

ON GREENS

If your salad is made of greens or light vegetables, select a dressing that will let the flavors of the salad assert themselves. Bachelor Club Dressing would be an excellent choice.

Sugar in tea salt in Bouillon

IMAGINE putting sugar on everything that came to the table... on meats as well as in tea. It would be all wrong, wouldn't it? We select the seasoning to suit the dish.

ON FRUITS

Fruits, on the other hand, don't go very well with a tart, sharp dressing. They respond best to a dressing to which a little cheese or some nuts have been added.

LIBERTY

Only Two Days More TODAY and THURSDAY

The Picture that is Sweeping La Grande



And What a Supporting Cast

- ROBERT Montgomery NEIL Hamilton IRENE Rich MARJORIE Rambeau SPECIAL Johnny Farrell Explains Golf

COMING — Friday and Memorial Day JACK HOLT in "THE LAST PARADE"