

LA GRANDE 15TH IN THE NORTHWEST

Building During 1930 Shows More Than 100 Per Cent Increase Here

A Pacific Northwest building summary prepared by Pacific Builder and Engineers reveals that La Grande ranked 15th in Oregon, Washington and Idaho. Statistics for all of the important cities were given and of the two score or more, only 11 cities showed increases over 1929.

Jan. 17—R. A. Crawford, to alter and repair a two-story dwelling on Washington between Ninth and Tenth, to cost \$300.

CLOSING TONE WEAK

NEW YORK, Jan. 19 (AP)—Moderately active selling appeared in the stock market during the last hour of today's trading, after the list had drifted lower in sluggish trading most of the day.

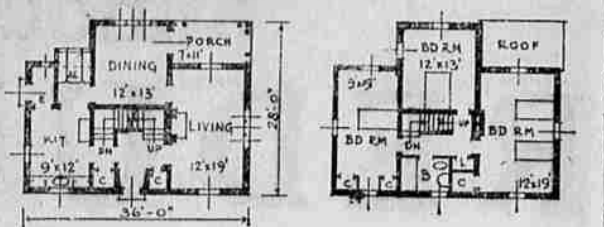
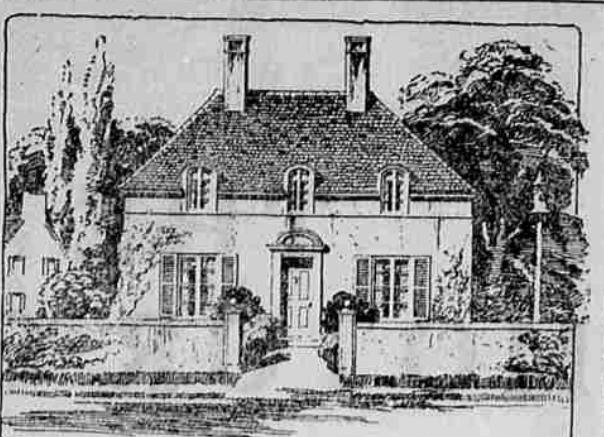
LIVERPOOL WHEAT

WINNIPEG, Jan. 19 (AP)—Wheat close: May 56 1/2; July 57 1/2; Oct. 58 1/2.

WICKERSHAM'S LAW REPORT IN HOOVER'S HANDS

(Continued from Page One) Now that the prohibition report is out of his hands, the commission is to concentrate on other phases of its study. A final report is expected in the spring.

DESIGNED FOR MODERN LIFE



By the Associated Press Here is a house of formal French design adapted to modern requirements and purposes. On magnificent old estates in France one may see stately mansions embodying the same appeal, but today's architect must not sacrifice money or neglect convenience and comfort in order to attain it.

FIFI GAINS BY LIBERIA'S LOSS



Fifi, described as "an intelligent chimpanzee," got all the modern medical science intended for a nation, just because he was willing to be inoculated and Liberia wasn't.

MARKET NEWS OF THE DAY

Table with market news for Chicago Wheat, Portland Wheat, and other commodities, including Open, High, Low, and Close prices.

Wholesale Butter Market Is Quiet

PORTLAND, Jan. 19 (AP)—Wholesale butter market opened quiet today and the egg market easy, both at unchanged quotations.

market, veal, much over-supplied, was a cent lower at 14 cents a lb. Heavy hen prices were at a 20 cent top as against an extreme of 22 cents last week.

ACOUSTICS IMPROVED!

SPEAKERS in the Court Room of the county court house have always been bothered with echoes and reverberations of sound, which made it very difficult to understand them.

HOME LUMBER & COAL CO.

1802 Cove. Ave. Ph. Main 248. BOSTON, Jan. 19 (AP)—Interest in 56's territory wools is broader than for many weeks.

For Hard Coughs That Call For Super-Help

Creomulsion is made for coughs from colds that hang on. For coughs deep and difficult—coughs where you dare not risk a less effective help.

PORTLAND LIVESTOCK PORTLAND, Jan. 19 (AP)—Cattle 2,000, calves 160; opening slow but looks steady.

PORTLAND PRODUCE

PORTLAND, Jan. 19 (AP)—Butter: quiet; (prices to retailers except as noted). Cubes: extras 25c; standards 24c.

CHICAGO LIVESTOCK

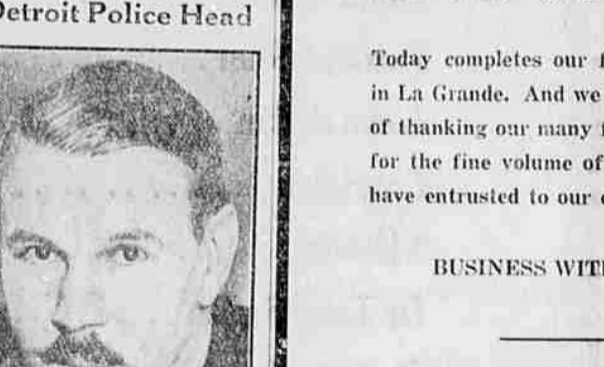
CHICAGO, Jan. 19 (AP)—(U. S. D. A.)—Hogs 80,000; weak to 10 cents lower; top \$8.25; bulk 130-210 lbs. \$8.00; \$8.20; good and choice 140-200 lbs. \$8.00; \$8.25.

HOT WATER FOR EVERY NEED

Through the New Improved HOTCOIL GAS WATER HEATER

A guaranteed product of the American Radiator Company. See this heater on display, also other models of gas water heaters.

DETROIT POLICE HEAD Following the third shake-up within a year in the Detroit police commission, James K. Watkins (above), attorney, was named to succeed Thomas C. Wilcox.



S-PL-I-N-T-E-R-S

Official Publication of THE VAN PETTEN LUMBER CO. Like fine old furniture, oak floors grow more beautiful with age.

Saves Trapped Men

Trapped by a cave-in in the tunnel of a San Francisco water project, 20 men owe their lives to Welby Morgan, who dragged a pipe beneath the falling rocks to supply the imprisoned men with air.

PORTLAND CASH

PORTLAND, Ore., Jan. 19 (AP)—Cash wheat: Big Bend bluestem 66c. Soft white 66c.

LIVERPOOL WHEAT

LIVERPOOL, Jan. 19 (AP)—Wheat close: March 61 1/2; May 61 1/2; July 63 1/2.

SUGAR

PORTLAND, Jan. 19 (AP)—Sugar: steady (sacked basis) cane, fruit or berry \$5.00 per cwt. Beet sugar \$4.90 cwt.

Advertisement for SHELLWORTH-GOECK PLUMBING & HEATING CO. featuring a 'A Birthday' theme and business slogan.

Advertisement for children's nutrition with the headline 'SHOULD THE CHILDREN EAT IT?' and text about parents' attention to diet.

Advertisement for J. MELVILLE Gas Installations, Plumbing, Heating and Sheet Metal Work.

Advertisement for food products with text: 'In other words, food advertisements are reliable sources of information regarding diet.'