

DRESS SHIRTS

One Special Lot

98c

Value to \$3.00

Not all sizes in this lot.



Radio Owes Much To Newspapers, De Forest Says

TORONTO, Ont. (AP)—The debt of radio broadcasting to the newspaper "is beyond all computation," Dr. Lee De Forest, pioneer inventor, told the annual convention of the Institute of Radio Engineers.

Decrying what he described as "the use of broadcast for direct and blatant advertising," Dr. De Forest, delivering his address as president of the institute, stressed the part the daily press had played in popularizing broadcasting. He said:

"Radio's debt to the newspaper for daily program notices, program reviews, and for the generous radio

MARKET NEWS OF THE DAY

CHICAGO WHEAT			
Sept.	Open	High	Low
	361 1/2 @ 3/4	361 1/2	359 1/2
Oct.	357 1/2 @ 1/2	357 1/2	355 1/2
Nov.	351 1/2 @ 3/4	351 1/2	349 1/2
Dec.	345 1/2 @ 3/4	345 1/2	343 1/2
Jan.	339 1/2 @ 3/4	339 1/2	337 1/2
Feb.	333 1/2 @ 3/4	333 1/2	331 1/2
Mar.	327 1/2 @ 3/4	327 1/2	325 1/2
Apr.	321 1/2 @ 3/4	321 1/2	319 1/2
May	315 1/2 @ 3/4	315 1/2	313 1/2

PORTLAND WHEAT			
Sept.	Open	High	Low
	361 1/2 @ 3/4	361 1/2	359 1/2
Oct.	357 1/2 @ 1/2	357 1/2	355 1/2
Nov.	351 1/2 @ 3/4	351 1/2	349 1/2
Dec.	345 1/2 @ 3/4	345 1/2	343 1/2
Jan.	339 1/2 @ 3/4	339 1/2	337 1/2
Feb.	333 1/2 @ 3/4	333 1/2	331 1/2
Mar.	327 1/2 @ 3/4	327 1/2	325 1/2
Apr.	321 1/2 @ 3/4	321 1/2	319 1/2
May	315 1/2 @ 3/4	315 1/2	313 1/2

section is beyond all computation. Paper Best or Some Things sincerely feel that the debt will be partially repaid only when certain forms of advertising most obviously ill-suited for radio's medium go to the printed sheet.

"The influence of radio on the press has now become profound. While its inherent limitations will never permit it to supplant newspaper, yet radio has largely eliminated extras on prize fight results and has shown a curtailment of interest in baseball news. But radio has this limitation—it must present its programs when the broadcasters choose, and not when the listeners desire it."

Blatant Advertising Hit
Turning to the question of broadcast advertising, Dr. De Forest said that in his inaugural address last January he sought "to point out a very real danger to the fullest use of radio and enjoyment which radio has power to confer, a menace steadily growing greater." This, he said, was "the use of the broadcast for direct and blatant advertising in larger and larger degree."

"If we consider the prosperity of the industry alone," he continued, "we engineers, dependent on radio for our livelihood, have ample ground for our concern. But there are considerations—the thought that short-sighted avarice is at work to curtail the usefulness, the beneficence of radio in the home, in the school, as a means of entertainment, of education, of uplift generally. Unless the evil is voluntarily cured we are headed straight for government regulation."

PORTLAND LIVESTOCK
PORTLAND, Ore., Aug. 20 (AP)—Cattle 50 calves 10 Steers 200-300 lbs. good \$7.50-\$8.50, medium \$6.00-\$7.50, common \$4.00-\$6.00, 900-1100 lbs. good \$7.50-\$8.00, medium \$6.00-\$7.50, common \$4.50-\$6.00, 1100-1200 lbs. good \$6.50-\$7.25, medium \$5.00-\$6.50.

PORTLAND PRODUCE
PORTLAND, Ore., Aug. 20 (AP)—Eggs, firm, unchanged.
Butter, milk (butterfat), poultry, country meats, onions, potatoes, wood, nuts, hay, cascara bark and hops steady and unchanged.

SUGAR AND FLOUR
PORTLAND, Ore., Aug. 20 (AP)—Sugar, steady, (sacked basis) cane, fruit or berry \$4.80 per cwt. Best sugar \$4.60 cwt.
Flour, steady, (city delivery prices) family patents, 48 \$6.40; whole wheat 48 \$6.50; Graham 48 \$6.30; bakers' hard wheat, 98 \$6.20; bakers' bluestem patents 98 \$6.40; pastry flour, 48 \$5.90.

LIVERPOOL WHEAT
LIVERPOOL, Aug. 20 (AP)—Wheat close: Oct. \$1.05 1/2; Dec. \$1.05 1/2; Mar. \$1.07.

BUTTERFAT
SAN FRANCISCO, Aug. 20 (AP)—Butterfat 1.0 b. San Francisco 41c and 41 1/2c.

CHICAGO LIVESTOCK
CHICAGO, Aug. 20 (AP)—(U. S. D. A.)—Hogs 15,000 active, unevenly 35-50c higher on lighter weights; sows and butchers 15-25c higher. Top \$11.75; good and choice 100-200 lbs. \$11.40-\$11.60; 140-160 lbs. \$10.50-\$11.50; 200-250 lbs. \$11.00-\$11.75; 250-350 lbs. \$10.00-\$11.40.
Cattle 11,000, calves 2,000. Trading active, steady to strong on fed steers and heifers. Weighty steers topped at \$11.25; yearlings \$11.25; some heifers higher; bulk grain fed steers \$9.50-\$10.75; largely \$1.00-\$1.50 higher on live line last week; vealers (milk fed) good and choice \$11.50-\$13.50.

WOOL MARKET
BOSTON, Aug. 20 (AP)—Trading in the wool is quite spotty, with some concerns continuing to receive fair demand while others are experiencing much less call than last week. There is, however, a fairly broad interest from mills in small lots for trying out their lines of goods. This inquiry is giving members of the trade a great deal of encouragement even though business apparently is dull. Asking prices are generally fair.

EAST SIDE MARKET
PORTLAND, Ore., Aug. 20 (AP)—There was another scramble for corn on the east side farmers market today. Demand was in excess of supply and prices ruled very firm. Most sales \$1.25 per sack.
Tomatoes held firm around 90¢-85¢ box generally for 1s. Demand for 2s was keen around 50¢.
Dallies cantaloupes were very scarce and held at firm prices. Offerings from Yakima found a good sale at \$1.60 crate on account of the inability to get Dallies stuff.
Blackberries were \$1.25-\$1.35 crate with strawberries \$2.75 and a similar price for raspberries.
Dallies eggplant moved \$1 flat crate. Peppers were in supply around 40¢ box.
No. 1 pickling cucumbers were 50¢ with 2s 35¢ and 3s 30¢. Slicing stuff at 30-35¢ box.
Apples were in very liberal supply with a general top of 75¢ box.
Peaches moved around 65-75¢ box generally. A few 50¢ lugs were priced \$1.00.
Green beans were weak and generally no higher than 40¢ lb.
Peas from the coast sold 60¢ with others 5-6¢ lb.
Cabbage demand was quiet at 90¢-\$1.00 crate.
Lettuce sold \$1.00-\$1.35 crate, the latter in a small way for selections.
Spinach was steady at \$1 orange box.
Candidates seeking state and county offices in Nevada number 37.

FIND IT HERE
Copy for this column must be in by 9 a. m.
A NEW IDEA
This is just what you have been waiting for. A real ice bucket with silver handle and silver top, and fitted with a cover so that it can be used for a cookie jar when it is not needed for ice. See this latest creation in beautiful glassware on special price this week for \$1.69 complete at Richardson's Art and Gift Shop. 8-18-tf.

Restitching, pleating, button holes, etc. Norton's Kiddie Shop. —Adv.

AN IDEAL GIFT
One of the new cut glass combinations for the cookie jar which are now on special sale at Richardson's Art and Gift Shop. Everyone enjoys both an ice bucket and a cookie jar. You will enjoy one of these. Assorted colors and designs for your selection. Special this week for \$1.69. 8-18-tf.

SWIM AT COVE POOL
"The Fountain of Youth." Complete change of clear, sparkling warm mineral water every 7 hours. 6-25-1m.

EVERYDAY
New things are arriving for the coming holidays at Richardson's Art and Gift Shop. You will enjoy seeing the latest creations in art and gift lines. You are invited to visit the shop when over town. 8-18-tf.

NOTICE TO CREDITORS
Notice is hereby given that the undersigned has been appointed the Administrator of the estate of Robert L. Webb, deceased, by the County Court of the State of Oregon for Union County and all persons having claims against said estate are hereby notified to present the same to the undersigned at his office at Elgin, Oregon, within six months from the date of the first publication of this notice. Date of first publication July 30, 1930.

JESSE CRUM,
Administrator of the estate of Robert L. Webb, deceased.
July 30-Aug. 6-13-20-27.

Cove vs. Radium Springs vs. Crystal Springs meet tonight at 7:30 at the Crystal Springs. 8-20-1 t.

NOTICE TO CONTRACTORS
Sealed bids will be received on the following projects by the Oregon State Highway Commission in Multnomah County Court House, Portland, Oregon, at 10:00 a. m. August 28, 1930.
The work consists of the construction of two maintenance equipment sheds, one at Baker, and one at the maintenance headquarters on the John Day Highway near Austin.
Proposal blanks, plans and specifications may be obtained at the offices of the State Highway Commission at La Grande and Baker.
OREGON STATE HIGHWAY COMMISSION. 8-23-3 t.

Eggs Continue Firm Following Tuesday's Jump

PORTLAND, Ore., Aug. 20 (AP)—Egg values continued firm today following Tuesday's advance. Top grades were almost at a premium with the supply scarcely ample.

The butter market was about steady with receipts light and demand limited.

Reviewing the fruit and vegetable situation, the Portland bureau of the U. S. department of agriculture says: First arrivals of Dillard, Oregon, cantaloupes met with excellent demand at prices about 50 per cent above the current selling values of Yakima cants. Carloads will move from Dillard in a few days.

Peaches were a bit stronger today, especially for Elbertas. This is a between-season period for Elbertas, with present offerings representing the last of the California crop, and Yakimas not expected for a few days yet.

Good green corn is higher at \$1.00-\$1.25 per sack of 6 dozens.

Movement of fresh prunes from the Walla-Walla-Milton district reached very heavy proportions yesterday, with some 60 cars. A much better quality prune is being shipped this year due to shippers withholding their loadings until a fair degree of maturity is attained.

Hay Selling In Wallowa County From \$8 to \$10

By G. C. Meek (Observer Correspondent)
WALLOWA, Ore. (Special)—Hay prices are said to be starting off considerably cheaper this fall than for a number of years. Reports from the upper part of the valley say that hay is being delivered into town in small lots for around \$8 to \$10 per ton. While the first cuttings of hay on irrigated land was below normal this year the second cuttings are good in most places. Grain hay on the dry farms is quite plentiful and it is expected that feed supplies will be more plentiful than for several years.

A number of heavy showers of rain fell over parts of this community during the past week. Monday afternoon a severe wind and rain storm visited the west part of the Leap section. The storm was so heavy over a strip about a mile wide that it amounted to nearly a water-spout. Water run down all small canyons nearly as freely as during the spring break-up, much of the summer alfalfa was beaten down quite solid and will require a large amount of cultivation to put it into shape for fall seeding.

Some damage also resulted to standing wheat from being threshed out and knocked down by the heavy wind which accompanied the rain. Lightening was quite severe and two steers at the M. J. Sevier ranch on District prairie were killed during the storm. Combining was delayed for about a day and some of the stationary threshing outfits were also laid off for a day or two.

Giles Plass moved his threshing outfit to the R. J. Conner farm on Whiskey creek the latter part of the week where he has about 160 acres of heavy wheat to thresh for Mr. Conner.

Whitney's Wife IS MENTIONED IN BRIBERY TRIAL

(Continued from Page One)
While Lyle Corwin, Bryant and Whitney are charged with conspiracy to violate the national prohibition laws and accepting bribes, the latter also is charged with perjury. The perjury count against Whitney will be tried later.

California is seeking to exterminate the Asiatic Mite, a fruit-destroying bird.

George Cusins who has been herding sheep in the mountains south of Lostine moved his sheep out to the valley during the past week. Those being herded consisted of several small bands, belonging to L. W. Miller, M. A. Peterson and Gastin and Cusins. Some of the sheep will be ranged on stubble fields in the hills for the balance of the fall. The lambs with the band have made an excellent growth while on the summer range.

RAILROADS ASK FOR EXTENSION

(Continued from Page One)
revisions ordered, are to be materially reduced throughout the west; the railroad's opposition is founded partly on the anticipated annual loss of \$13,000,000 in revenue by the decision.

OREGONIANS ASK HOOVER FOR RELIEF

(Continued from Page One)
that farmers will get the benefit of reductions made on freight shipments of grain in various sections, having instructed county agents in affected regions to watch and report on the situation. The national relief committee is to coordinate federal activities for cooperation with the groups being set up in stricken states.

The movement of feed for livestock into drought stricken areas will receive immediate attention. The agriculture department agents have been charged by Hyde to look to the interests of the farmer in watching application of the reduced rates.

Other members of the national committee will be Chairman Lester of the federal farm board; Paul Bestor, federal farm loan commissioner; Roy A. Young, governor of the American Red Cross; R. H. Alshon, president of American Railway association; Ogden Mills, under secretary of the treasury; and Henry M. Robinson, president of the First National bank of Los Angeles.

President Hoover announced the Hyde appointment, saying approximately 300 counties were embraced within the drought region where conditions are regarded by relief officials as serious. The real burden confronting the stricken farmers, he said, was not expected to be reached before next winter.

His statement said latest reports continue to show the drought was severe and that rains had improved conditions only in non-acute areas.

CAREY LEADS IN WYOMING'S PRIMARY VOTE

(Continued from Page One)
tribunals of punishment. "The expense of five billions each year to administer the national government, to give it force and officials to deprive the states of home rule and the snatching from the states and cities of five hundred millions of revenue."

The citizen, he said, "beholds business driven to desperation. Capital to terror and sees ejected from employment millions and millions of toilers. He warned that "in their helplessness these burdened and abandoned Americans become fit for communism and peril their own land with threats of danger."

The restoration of the government to the foundation laid by the fathers of the republic, and the return of the state to revolve about the axis of the constitution afford the only assured relief, he said.

"To this end, there must be," he said, "a liberalization, qualification

Pinchot's Right Established

PHILADELPHIA, Aug. 20 (AP)—Gifford Pinchot's right to the republican nomination for governor was formally established today by the supreme court of Pennsylvania. The four members of the tribunal, who yesterday heard argument in the appeal taken by Francis Shunk Brown, The Philadelphia organization's contender for the nomination, handed down an order dismissing Brown's case.

Brown's fight was based on the paper ballots cast in Luzerne county in the primary of May 20.

Substantially, the supreme court held that while the Luzerne county court had exceeded its legal powers by ordering the perforation of the ballots this was not sufficient reason for throwing out the 60,000 votes for these votes would have defeated Pinchot.

Mystery Remains Unsolved Today

(Continued from Page One)
ing about her and her secretary Mae Waldron.

"Aimee was wild," Mrs. Kennedy declared. "We had a few words and then she came right out and accused me of talking about her. I said, 'honey, I haven't been talking about you, but I have said associates.'"

"Things happened so quick I can't remember. Anyway, when I came to my senses, I was on the floor and my nose was almost killing me. They picked me up and dashed water on my wrists and although I was in pain, I decided not to disappoint my friends up in Olympia, Wash., and I left for the north the next day to dedicate a church."

"But my poor nose kept getting worse. It turned blue and green and I rushed back here realizing I was badly hurt. I had received a face lift and so had Aimee. Sure, I had my face lifted. What of it? So was Aimee's—she won't deny it if you ask her."

Denies Striking Mother

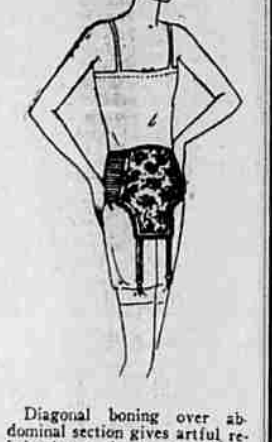
LOS ANGELES, Aug. 20 (AP)—The examiner today says Aimee Semple McPherson, pastor of Angelus Temple, last night denied striking her mother, Mrs. Minnie Kenney, as the latter alleges she did.

The paper printed the following statement from Mrs. McPherson: "I did not hit mother. I wanted to talk to her about some things she had been saying and she started to leave the room. I asked her to stay and talk to me. She started to yell at me and screamed and yelled, as she had done before. Then she went away and several all-convicted with the temple."

Regarding her physical condition Mrs. McPherson is quoted: "I'm a sick girl—but I'll be all right soon."

J.C. PENNEYCO

108 Depot St. La Grande, Ore.



Diagonal boning over abdominal section gives artful reinforcing to the average figure. Side hook model of rayon figured brocade. Apron back and panel front. Lace-edged. Sizes 24 to 34.

98c

BUSINESS LEADER GRAVELY HURT IN AUTO-BUS WRECK

(Continued from Page One)
Mrs. Hazelip was flying from Atlanta to Washington. She apparently got off her course and attempted to make a landing in a cotton field. A wheel gave way in landing and the plane ground looped.

She was brought to a hospital unconscious.

Vern Dawson, of Los Angeles, flying another plane, made a safe landing near Mrs. Hazelip's wrecked ship.

SUNBURN, RASHES, BITES

based by cool, antiseptic Zemo
Depend on cooling, soothing Zemo to draw the heat and sting out of sunburn and bring comfort to summer skin itch. Known and praised for 20 years. Millions know how quickly and safely it clears away skin troubles, including stubborn dandruff and ugly pimples. Try this safe, reliable antiseptic after shaving; it eases razor-smart. Always have Zemo handy. Any drugstore. 35c, 60c, \$1.00.



Peacock Nut Coal
Here is a coal that is just the thing for the range or furnace. It is cheaper in price than the larger sizes and gives as much heat.

VAN PETTEN LUMBER CO.
PHONE MAIN 732.
"GOOD SERVICE QUICK"

Cox Auto Electric
Electrical Ignition and Battery Repairs on all Makes of Cars
Ph. M-753 1425 Adams

Walker's Funeral Service
5th at Spring St. PHONE MAIN 42

Ladies' All-Leather HOUSE SLIPPERS
Medium Heels in Red, Green, Blue, Orchid and Black
\$1.98 pair

NEW YORK STORE
M. G. SWAIN, Mgr.



IS COMING
Natural Gas Corporation of Oregon
announces plans have been completed for the immediate building of a liquefied natural gas plant and distribution system here. This picture shows one of the modern ditching machines that will be used in building the gas system.

Within a short time you will be visited by our representatives who will seek to learn your gas requirements. In this way pipe can be laid to best care for your needs. An office of the company will be established where modern gas stoves, water heaters, and other appliances will be demonstrated.

In furnishing gas to this community, heretofore denied this service, we solicit your cooperation.

If it is done with HEAT you can do it better with GAS

- Gas for COOKING
 - Gas for HEATING
 - Gas for HOT WATER
 - Gas for ECONOMY
- You only pay for what you use

Natural Gas Corporation of Oregon
"Instant Heat"
For Information call F. T. Smith, 304 Grande Ronde Apts. Phone Main 411.



Duco Body Polish
Pint Can 85c
Apply this famous polish with a soft cloth, "traffic film" is removed, original new car luster is restored. Regular \$1 value!

Montgomery Ward & Co.
1191-3 Washington Ave. La Grande