

AUTOMOBILE NEWS Of The WEEK

WILL STUDY NEW HIGHWAY METHODS

Road Men of 55 Nations to Attend Sixth International Congress.

WASHINGTON (AP)—Expressed in many languages, the common theme of good roads for all the world will be studied this fall in Washington by road builders from 55 countries attending the sixth international road congress.

The highway conference will be held October 5 to 11, at the invitation of the United States government, with an object to continuing studies begun in Paris in 1928 and later conducted in other world capitals.

It is expected by Thomas H. McDonald, chief of the bureau of public roads and secretary-general of the American organization, committee to be more representative than any preceding congress.

A particularly large representation is expected from the Latin-American republics, for whose benefit papers prepared for the six congresses of the agenda are being translated into Spanish for the first time. The material for discussion also is being prepared in German, French, and English.

Construction and maintenance, and traffic and administration will comprise the two sections of the agenda. Under the first heading, road men will tell of results obtained in their countries by use of cement, bricks, and other artificial paving.

New methods adopted for use of tar, bitumin, and asphalt in road construction will be presented, and construction of roads in new countries, colonies and undeveloped regions will be discussed.

Methods of financing road construction and maintenance, correlation of highway transportation with other modes of transport, traffic regulation, and parking and garaging of vehicles will be considered among traffic and administrative problems.

First-hand studies of highways in the United States will be made by many international visitors after the conference on tours planned by the highway education board into the south, east and mid-west.

An exposition and road show, demonstrating American machinery and equipment, will be held by the American Road Builders' association in connection with the congress.

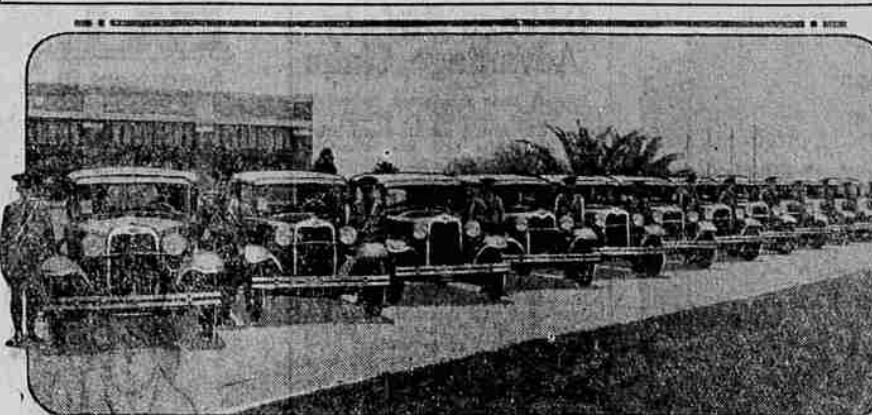
BOY IS OWNER OF CHEVROLET OF SMALL SIZE

Without question, one of the happiest boys in the west is Bill Hooper, eight-year-old son of Harold Hooper, Chevrolet dealer at Ellensburg, Wash., who is the owner of the world's smallest "Chevrolet," a one-passenger car that will turn up 10 miles an hour and deliver 120 miles on a gallon of gasoline.

This little car carries the Chevrolet name plate and is made from an old radiator shell and naturally it is his most prized possession. Here is how the elder Hooper, who built the car, describes it.

The motor is a three-quarter horsepower washing machine engine. The frame was made from white pine. The springs are Chevrolet six

U. S. BORDER PATROL TO USE FORDS



Show above are a dozen Ford cars recently delivered to the United States Department of Labor for the use of the Bureau of Immigration. These cars, Fordor Sedans, are being used for patrolling the border.

Program of Road Building Opening More Canadian Scenery for Tourist

The extensive program of road building by provincial and federal governments in Canada will open to motorists more scenery to the square mile than any other country in the world offers. The Pacific slope which in the north country includes the Selkirk and the Rockies are fast opening up national parks to motorists, and with that an unsurpassed opportunity for enjoyment far removed from the bustle and hurry of great cities. Many of the lakes are filled with sporting fish, the British Columbia salmon is well-known to anglers.

The Trans-Canada highway will be ready for use early in 1932. From the coast it is now possible to travel to Big Bend on the Columbia, and work on the gap between there and Revelstoke park will be pushed.

"One of the finest tours in the Canadian Rockies is over the Columbia River highway passing north through the cow country ending in a most effective loop, the Larlat Trail—through three of Canada's national parks, Kootenay, Yoho and Banff," states F. G. W. Sudrow, Pacific regional manager of Olds Motor Works, manufacturers of Oldsmobile and Viking cars.

First To Cranbrook Crossing the border into Alberta, the motorist goes first to Cranbrook, and then up the trail to Lake Windermere from which pretty bit of water, the great Columbia flows north and in a broad curve rushes south again forming the Arrow lakes, and crushing a path for itself, down the valleys and into the Pacific.

Three days is the time usually allowed the motorist to circle the Larlat trail. The Canadian Pacific railway has erected bungalow camps at several points on the road, and touching as it does the famous hotels, Banff Springs and Chateau Lake Louise, the traveler is sure of finest accommodation, and fresh ideas for a long sojourn.

Perhaps the best approach is north from Lake Windermere along the banks of the most dangerous river in the Rockies, the Columbia—with wicked white water. The district

around Windermere is the entrance to the great ice-fields of the Selkirk range, and there are some famous fishing streams in the vicinity, so pack a rod. There are many fine trails, too, and the sure-footed, fool-proof cayuse of the Rockies will bring you many a thrill.

The road crosses and recrosses the river gorge, and 35 miles from Golden, the river chasm narrows until a mere ledge serves as the main down which the current rushes—Natural bridge. From this point for nine miles the road runs straight through an avenue of straight tall pines, Snowpeak avenue, for at each end rises a peak nearly ten thousand feet high, and resting at the foot of Mount Burgess is Emerald lake.

The lakes in the Rockies cannot be described—they are too beautiful. But the great water here is of clear-cut green, and the reflections of the peaks and the trees and the sun is so pure that humans wonder which is reality. A fine chalet is built on the lake, one of the most popular places for lettering.

To reach the Yoho valley, one of the world's wonder places, the motorist retraces Snowpeak avenue, crosses the Kicking Horse at Field, and then meets the Yoho river. Half way up the road is a fine specimen of cork-cork architecture. Suddenly the voice of rushing waters—Takkakaw Falls, one thousand feet of rushing spray from the great Yoho glacier, leading to fossil beds, to ice fields, alpine meadows and lakes and waterfalls of purest beauty.

The great spiral tunnels of the Canadian Pacific are seen on the road to Lake Louise. The most perfect bit of scenery in the known world is at the end of the day's run, and a wide motorist leaves his car to climb the path leading to the lakes in the clouds where a view is given of a sea of peaks as varied as the waves of the ocean.

The road leading to the Valley of the Ten Peaks, past Temple mountain, to Meraine lake is a famous morning's drive, and then for forty-five miles to the town of Banff.

From Banff due south lies the Banff-Windermere highway, 104 miles of sheer wonder. Past Castle mountain and Storn, up, up, over Vermilion Pass and down the valley of the sparkling Vermilion and Kootenay rivers, and then through the singular canyon, where the road passes through a mere gash in the rock, hundreds of feet high.

And so again to Windermere and to Cranbrook. One may go east or west again, or back again to some remembered spot. Three days easy driving makes the Larlat tour, but three months could easily be spent and not half its beauties seen.

The eighteenth child was born to Mr. and Mrs. A. H. Herzberg, Yorktown, Iowa, farm couple, recently.

MERCHANT GETS SHARE OF CASH

Twenty-six Cents of Every Tourist Dollar are Given to Him, Report.

PORTLAND, Ore., Aug. 4.—Of every dollar spent by the tourists of the country, 26 per cent goes directly to the merchants, according to the Oregon State Motor association.

The association bases this statement on an analysis of tourist expenditures made by the research department of the American Automobile association. This means that of the \$1,000,000,000 expended by the motorist's tourist caravans each year, more than \$1,000,000,000 goes into the tills of merchants and shopkeepers and affords striking proof of the beneficial effect of travel on the economic life of the nation. While the merchants come first in the list of beneficiaries, the restaurants and hotels secure a very substantial share, though by no means the largest share as has been generally assumed.

Following is a list of items for which the tourist dollar is expended:

| | |
|----------------------------------|------|
| Merchandise | 26 |
| Restaurants and cafes | 20.5 |
| Hotels and rooms | 17.3 |
| Auto accessories, gas and oil | 11.5 |
| Theaters and amusements | 8.5 |
| Transportation (railroad) | 7 |
| Street railways, taxis and buses | 3.3 |

Club's Platform Stresses Road Needs of West

The platform adopted by the American Automobile association at its recent annual convention in Asheville, N. C., embodied several important resolutions pertaining to the development of highways in the west states and stressing the importance of the development to the nation as a whole, according to Dr. E. B. McDaniel, president of the Oregon State Motor association, which is affiliated with the American Automobile association.

"Organized motordom's platform for 1930 and 1931," he said, "stresses several measures which the local club and car owners' affiliations have consistently fought for."

"After commending President Hoover and congress for the enactment of the Oddie-Culbick bill whereby the government for the first time assumes the responsibility for the construction and maintenance of highways through and across unappropriated public lands and Indian reservations, the convention took up the question of approach roads to the national parks and the question of roads to protect the national forests."

In regard to national parks approach roads, a resolution was unanimously adopted, the gist of which is:

"The American Automobile association therefore endorses legislation now pending in congress to bring the national park approach roads under the jurisdiction of the national park service and authorizing adequate appropriations for their construction and maintenance."

After citing the fact that in the period 1916 to 1927 there had been destroyed 170,000,000 acres as a result of 407,000 forest fires, the convention went on record with the following declaration:

"The enormous increase in the number of fires in our national forests during the past few years indicates the necessity for enlarged federal appropriations for road building and fire protection purposes, and the American automobile association favors enactment of legislation to remedy present conditions."

Alpsport Has Wide Runways

LOS ANGELES (AP)—Airplanes landed and took off simultaneously on the new runway at United airport. In a test Runways are 300 feet in width and require 3,000,000 feet of paving.

Government Men Show Preference For W-O Models

TOLEDO, Aug. 9.—The fact that products of the Willys-Overland company, Toledo, O., play an important part in the operation of city, county and state departments, is evidenced by the recent delivery of a large number of motor cars and trucks to these branches of government. It is well known that before such purchases are made by governmental departments, the equipment must pass various rigid requirements.

Such equipment must in the first place, give dollar-for-dollar value whether it be truck units or passenger cars. They must have inbuilt stamina since in many instances they are subjected to hard service night and day. Economical operation, low upkeep cost, dependable service and performance are other requirements that the government demands of its motor equipment.

The fact that numerous governmental agencies have turned to Willys-Overland for its motor equipment is a tribute to the product of the Toledo manufacturer.

Sales executives of Willys-Overland announce that recent deliveries to government units include: 20 Whippet four touring cars to the Kansas City police department; 17 Whippet four coupes and coaches to city of Hartford, Conn., which increases its fleet of Whippets to 43; a fleet of 34 Whippet sedans to Toledo police department, four C-101 chassis for police patrols and on Model T-103 trucks; to the government of Lucas county, Ohio, has been delivered a Whippet four chassis, a Willys Six coupe and two Willys Six DeLuxe sedans; Ada, Ohio, school district has received six Model C-101 chassis for school buses.

Among the numerous other governmental divisions recently installing Willys-Overland equipment are: Leport, Ind.; Bellefontaine, Ohio; Meline, Ill.; Antwerp, Ohio; E. Rockaway, N. Y.; Oakland county, Mich.; Camden, N. J.; Plymouth county, N. C.; Wood county, Ohio; Sandwich, Ill.; Hillsdale, Mich.

Many of the points where new Willys-Overland products are being installed, for years have used products of the Toledo manufacturer and its sales to all government divisions show a marked increase over other years.

Arnold Leads Car Racers For Title


WASHINGTON (AP)—The commanding lead of Billy Arnold, 23-year-old Chicago racer, threatens Louis Meyer's two-year reign as America's championship driver.

With four remaining events sanctioned by the American automobile association for the crown, Arnold is ahead with 888 points and William "Shorty" Cantlon, Detroit, second with 480 points.

A win for Arnold in the 200-mile race September 1 at Altoona, Pa., would increase his lead by 240 points and put him beyond reach of the other contenders, racing officials say.

Air Mail Saves Loss

WASHINGTON (AP)—Air mail postage on a piece of mining machinery flown from Ohio to Chile totaled \$850, but the machinery forestalled closing down of a plant with a loss of several thousand dollars.



— if you hit him WHO PAYS? why take the Risk?

ACCIDENTS happen every day in the year! How do you know YOU won't be next? You cannot afford to risk damage claims and law suits. Protect yourself NOW!

YOU can secure complete protection immediately by paying a small amount now and spread the remainder over a period of months.

UNITED STATES INVESTMENT CO.

O. W. WARNOCK, Mgr.

United States National Bank Building, La Grande, Oregon

When SHE drives --- no tire can be too good



"Ladies' Choice" is a GOOD YEAR backed by our prompt, polite service

We pride ourselves upon the increasing number of women drivers who drive in for our service. Courtesy, cleanliness and quickness, we know, appeals to them.

Without question, also, the ladies much prefer Goodyears—they tell us they've found them "more reliable," they "feel safer" on Goodyears.

Consult us, without obligation, as to the most economical type of Goodyear for YOUR driving.

New HEAVY DUTY Strikingly handsome! A big, stout tire with an extra-thick, extra-safe All-Weather Tread over 6 plies of sturdy SUPERTWIST Cord—selling at ordinary heavy duty prices!

New Low Prices on Goodyear Double Eagles, New Heavy Duty, Standard All-Weather, Heavy Duty Pathfinder, Regular Pathfinder.

Phone Main 165 for Prompt Service

PLAYLE OIL CO. ADAMS & GREENWOOD

More People Ride on Goodyear Tires Than Any Other Kind.

HERE TOO

CHRYSLER



Chrysler Eight Roadster, \$1495 (wire wheels extra)

COMPLETE LINE

There is today a Chrysler for virtually every purse and every person's need or desire—six-cylinder Chryslers and eight-cylinder Chryslers—and in whatever Chrysler you choose you get more for your money than the same sum or a similar sum could elsewhere obtain. Let us prove it to you.

NEW CHRYSLER SIX
Coupe, \$795; Touring, \$835; Royal Coupe, \$835; Roadster, \$835; Royal Sedan, \$1445; F. O. B. Factory.

CHRYSLER "66"
Business Coupe, \$795; Brougham, \$875; Roadster (with rumble seat), \$1025; Phaeton, \$1025; Royal Coupe (with rumble seat), \$1075; Royal Sedan, \$1905; F. O. B. Factory.

CHRYSLER "70"
Business Coupe, \$1245; Brougham, \$1245; Royal Coupe (with rumble seat), \$1295; Royal Sedan, \$1295; Phaeton, \$1295; Roadster (with rumble seat), \$1345; F. O. B. Factory.

NEW CHRYSLER EIGHT
Standard Model—Roadster, \$1495; Coupe, \$1495; Sedan, \$1525—Special Coupe, \$1535; Special Sedan, \$1585; Special Convertible Coupe, \$1985; Sport Roadster (with 6 wire wheels and trunk rack), \$1985; F. O. B. Factory.

NEW CHRYSLER IMPERIAL EIGHT
Four magnificent body styles: Seven-Passenger Sedan, Sedan Limousine, Five-Passenger Sedan, Close-Coupled Five-Passenger Sedan.

L. W. WEEKS Greenwood and Jefferson

NEW 2-DOOR SEDAN SOLD BY CHRYSLER 365

A TRIP without REGRET



— if you ride on GOODYEAR TIRES

YOUR trip will not be marred by tire trouble if you have equipped your car with Goodyears. Their solid, extra-thick treads give unusually long service, and rid your mind of worry. And now you can buy them on our convenient

Easy Payment Plan

by which you can equip your car with a complete set, and distribute the cost over a period of months. Come in for further details.

FRESH STOCK—FULL GUARANTEE—FREE MOUNTING

W. H. Bohnenkamp Co.