

SOCIETY NEWS

Banquet In Honor Of E. O. N. Class Given at Hotel

The last event of the first commencement week at the Eastern Oregon Normal school took place Tuesday evening at a charming banquet given in honor of the senior class by the faculty at the La Grande hotel.

President H. E. Inlow presided as toastmaster and the following toasts were given: to the first faculty, Mrs. Victoria Schweizer; to the first graduates, Miss Helen Moor; to the first E. O. N. building, Miss Vergella Bond; to the first alumni, Elmo Stevenson; to the other first, Owen Price.

The faculty quartet consisting of Miss Amanda Zable, Miss Madeline Taylor, W. W. Nysham and E. G. Tankie, accompanied by Miss Caroline Williams, sang original songs about the school and about the class members. Group singing was led by Miss Grace Gehbel accompanied by Miss Elaine Bechtel.

The committee in charge of arrangements was: Miss Zable, Miss Larson and Miss Alice McDonald.

Miss Neukirchner And Mr. Sams Wed

Word has been received of the marriage of Miss Marie Neukirchner, daughter of Mrs. Albert Neukirchner of this city, to George Sams, son of Mr. and Mrs. W. A. Sams, of Rich, Ore., former residents of La Grande on Cove avenue. The wedding took place Monday June 9 in Pendleton where both the bride and the bridegroom have been employed. Mrs. Sams at Whites Florist shop and Mr. Sams at the Model cleaners. The newlyweds will make their home in Pendleton.

In compliment to them a delightful wedding supper was given last night at the home of the bride's mother in La Grande where they are visiting for a few days. Only a few relatives and friends were in attendance and a pleasant evening was enjoyed.

Party Compliments Miss Anne Roesch

Following is a clipping from The Pendleton Echo of interest to La Grande friends of Albert R. Jensen whose marriage to Miss Anne Roesch will be an event of June 15:

Mrs. William Roesch Jr. and daughter Miss Anne Roesch, bride-elect, entertained at an enjoyable tea yesterday afternoon at the Roesch home. About one hundred guests called during the afternoon. A color scheme of green and pink was used, gladioli and sweet williams being used in the living room. The tea table was charming with stocks and Japanese irises, about which centerpieces there hovered yellow butterflies. Pouring during the afternoon were Mrs. Anna Stork, Mrs. Evelyn Green, Mrs. J. O. Holes and Mrs. G. W. Byers.

Assisting in welcoming the guests were Mrs. George Stangler, Mrs. John Dickson, Mrs. Mae Hoke, Mrs. James H. Bowler, Mrs. James K. Hill and Mrs. W. W. Green. Assisting in serving were Mrs. David Temple, Mrs. H. V. Smith, Mrs. Raphael Raymond, Miss Cora Eldridge and Miss Inez Hartstrom. Mrs. Smith (Maurine Akers) is here from Carlton, Oregon to visit her parents, Mr. and Mrs. M. L. Akers.

Women Entertained At Baker Tuesday

Thirteen women golfers, members of the La Grande county club, spent a delightful afternoon in Baker yesterday as guests of the

ZESTFUL RELISHES AROUSE APPETITES IN WARM WEATHER

Pickles, Ketchup and Jelly Make Balanced Meals More Inviting

Summer heat often lessens the desire for food. However, body vigor must be maintained in hot weather as well as cold. Meals, therefore, must be planned to make folks hungry.

The spicy zest of ketchup, chowchow or pickles, the tart-sweet taste of cool jellies or jam can be counted upon to set appetites in motion. By serving these relishes frequently with meat, fish, potatoes and green vegetables, a new interest will be taken in these foods.

Many relishes can be mixed in French or mayonnaise dressings with delicious results. For example, equal parts of chili sauce and mayonnaise make the zesty Russian dressing. When such dressings are served on vegetable, fruit, meat or fish salads, these wholesome foods are hard to resist.

Sugar plays an important part in the preparation of most relishes. It unifies all kinds of flavors into delicious goodness. Think of this as you plan the family menus. A dash of sugar to a pinch of salt is a simple, inexpensive and dietetically correct way to increase the taste-appeal of vegetables, stews and salad dressings. Most foods are more delicious with sugar. The Sugar Institute.

Evening of Cards Follows Session

A pleasant evening of cards was enjoyed by the members of the Women's Benefit association and their husbands last night following the regular business session, when Miss Ethel Harnden was chosen junior delegate to the convention at Portland the last of this month. Nine tables of pinocle were at play with Mrs. Bert Spencer winning first honors and Mrs. J. E. Reynolds receiving second prize. For the men, Charles Ward won first and Claude Mackey made second high score.

Birth Day Party For Truman Irwin

The thirteenth birthday of Truman Irwin was the inspiration for a happy party yesterday afternoon at his home on the Cove highway. Eighteen guests were in attendance and during the afternoon games and music were enjoyed. A delicious two-course luncheon, with a color scheme of pink and white, was served by Mrs. Irwin assisted by her daughter, Mrs. Marion Stoddard, Mrs. Jack Broomfield, Mrs. Milo Goss, Mrs. Alice Robinson and Mrs. Henry Hartman. The honor guest at the tables was Truman's grandfather, who is 86 years of age and who greatly enjoyed the event.

Mrs. Herrman baked and decorated the large pink and white cake which was the centerpiece of the table. Table arrangements were also in a color scheme of pink and white.

Those present were: Mildred Goss, Fern and Lois Broomfield, Beulah Hagey, Anna Louise Moore, Lois Robertson, Mary Jane Chadwick, Phyllis Shafter, Donald

Walters, Earl and Harold Herrman, Vernon and Henry Stoddard, Bill Goss, Bill Clegg, Richard Bousquet, Beornil Richardson, and the honor guest.

Initiate Three Into Membership

Three new members, Mrs. Anna Clower, Mrs. Lila Rynearson and Bert Elliot, were initiated into the Neighbors of Woodcraft at their meeting last night when a large number was present. Following the business session delicious refreshments were served by the June committee.

Announcements

The Lutheran Ladies Aid will meet tomorrow afternoon at 2:30 o'clock at 304 B avenue with Mrs. L. J. Elbert hostess.

The Stitch and Chatter club of the American Legion auxiliary will meet at the home of Mrs. Kennedy at 2003 Cherry street tomorrow at 2 o'clock to sew for local families.

Vanderbilt's mile relay teams have won first place in that event in five of the eight annual Southern conference meets.

Visitors Speak At Lodge Meeting

Iris Camp No. 2980, Royal Neighbors of America met in regular session on Monday evening in the Odd Fellows temple. Mrs. Thille Cox, of Lakeside, Cal., Mrs. Sarah Molke and Mrs. Josephine Prazier of Athol, Idaho, were welcomed as visitors and each gave an enjoyable talk about their own camps. For the next meeting Mrs. Effie

Club Women Oppose The Music Robots

DENVER, June 11 (AP)—Music robots cannot possibly take the place of the trained and gifted musician, the delegate body of the biennial convention of the General Federation of Women's clubs decided Tuesday.

The organization adopted a resolution "unalterably" opposing the "elimination of 'living music' from our homes and our theaters," and ordered a copy of the resolution sent to the Music Defense League, New York.

Menus Of The Day

By Mrs. Alexander George CRISP ICE BOX COOKIES Breakfast Stewed Prunes, Chilled Wheat Cereal and Cream Popovers Coffee Luncheon Tomato Salad Plum Jelly Chilled Diced Pineapple Cookies Iced Tea

Dinner

Browned Halibut Steak Tartar Sauce Creamed Potatoes Buttered Onions Bread Grapes Jelly Head Lettuce and French Dressing Raspberry Pie Coffee

Crisp Ice Box Cookies

1 cup fat, (half lard and half butter), 2 cups sugar, 2 eggs, 1 teaspoon vanilla, 1-2 teaspoon lemon extract, 1-4 teaspoon salt, 1-2 teaspoons nutmeg, 3 tablespoons cream, 5 cups flour, 3 teaspoons baking powder, Almonds, blanched.

Cream fat until soft. Add sugar, beat until creamy. Add eggs, vanilla, lemon, salt, nutmeg and cream. Beat 2 minutes. Add flour and baking powder. Shape into 2 rolls, 2 inches in diameter. Roll in waxed paper. Chill over night. Cut off thin slices and place 3 inches apart on greased baking sheets. Top cookies with almonds after arranged on baking sheets. Bake 12 minutes in moderate oven.

Tartar Sauce (For Fish) 1-2 cup stiff mayonnaise, 2 tablespoons finely chopped sweet pickles.

Stomach Troubles

Doctors say 90% of all sickness is due to stomach troubles, so if you suffer from gas, pains in the stomach or bowels, dizziness, and have no appetite can't sleep and are nervous you need Tanlac. It is good pure medicine, made of roots, herbs and barks. Your drug gist sells it on a money-back guarantee

INFANT'S AND CHILDREN'S Organdy bonnets, in all colors 39c to 98c

Organdy dresses, pink, blue and yellow All made but hand work 98c

NORTON'S KIDDY SHOP

SERVING MANY BUSINESSES

Experience of large fleet owners reveals the unusual reliability and economy of the new Ford



A SIGNIFICANT TRIBUTE to the value of the new Ford is found in its increasing use by Federal, state and city governments and by large industrial companies which keep careful day-by-day cost records. In most instances, the Ford has been chosen only after exhaustive tests of every factor that contributes to good performance—speed, power, safety, comfort, low cost of operation and up-keep, reliability and long life.

Prominent among the companies using the Ford are the Associated Companies of the Bell System, Armour and Company, The Borden Company, Continental Baking Corporation, Firestone Tire and Rubber Company, General Electric Company, Goodyear Tire and Rubber Company, Kellogg Company, Knickerbocker Ice Company, Morton Salt Company, Pillsbury Flour Mills Company, The Procter & Gamble Company, and Swift & Company.

Each of these companies uses a large number of Ford cars and trucks.

The Associated Companies of the Bell System use more than eight thousand.

Modern business moves at a fast pace and it needs the Ford. Daily, in countless ways and places, it helps to speed the production and delivery of the world's goods and extend the useful service of men and companies.

Constant, steady operation over many thousands of miles emphasizes the advantages of the sound design of the Ford car, its high quality of materials, and accuracy in manufacturing. Beneath its graceful lines and beautiful colors there is a high degree of mechanical excellence.

An example of the value built into the Ford is the use of more than twenty ball and roller bearings. They are hidden within the car and you may

never see them. Yet they play an important part in satisfactory, economical performance. Their function is similar to the jewels of a fine watch.

Throughout the Ford chassis, a ball or roller bearing is used at every place where it is needed to reduce friction and wear and give smooth, reliable mechanical operation.

At many points, as on the transmission counter-shaft, clutch release, fan and pump shaft, and front drive shaft, these ball and roller bearings are used where less costly types of bearings might be considered adequate.

Additional instances of the high quality built into the Ford are the extensive use of steel forgings, fully enclosed four-wheel brakes, Rustless Steel, four Houdaille double-acting hydraulic shock absorbers, aluminum pistons, chrome silicon alloy valves, torque-tube drive, three-quarter floating rear axle, and the Triplex shatter-proof glass windshield.

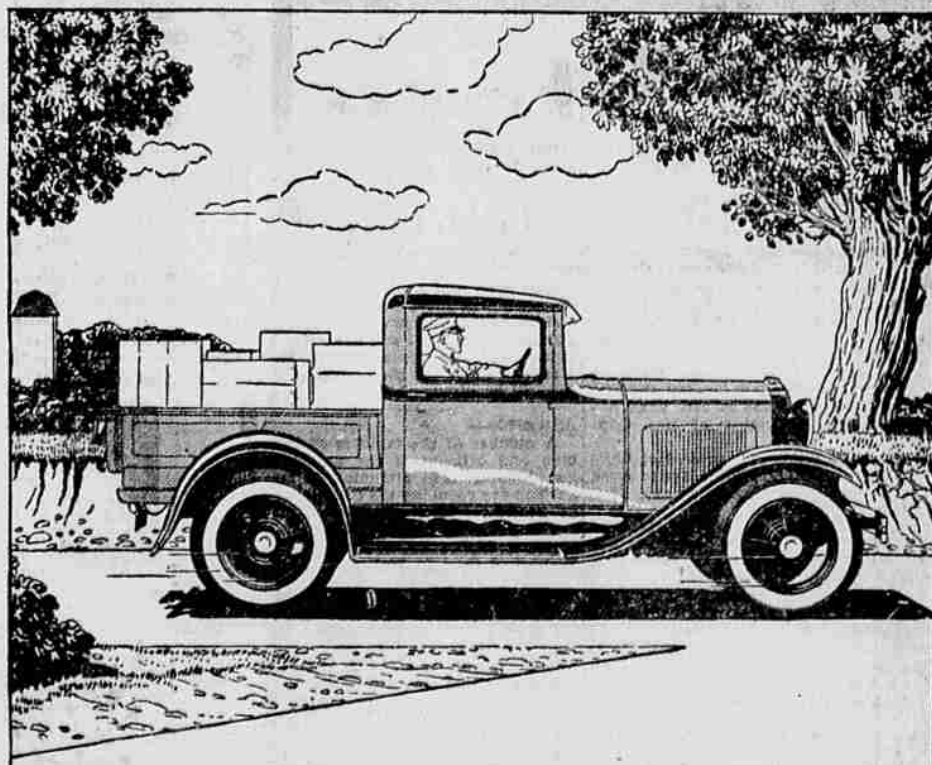
The Ford policy has always been to use the best possible material for each part and then, through large production, give it to the public at low cost.



NEW LOW FORD PRICES

Table listing Ford models and prices: Standard Coupe \$495, Sport Coupe \$525, De Luxe Coupe \$545, Tudor Sedan \$495, Three-window Fordor Sedan \$600, De Luxe Sedan \$640, Town Sedan \$660, Cabriolet \$625, Roadster \$435, Phaeton \$440, Pick-up Closed Cab \$435, Model A Chassis \$345, Model AA Truck Chassis, 131 1/2-inch wheel base \$510, Model AA Truck Chassis, 157-inch wheel base \$535, Model AA Panel Delivery \$780

All prices f. o. b. Detroit, plus freight and delivery. Bumpers and spare tire extra at low cost.



FORD MOTOR COMPANY

STATE NOW PLAYING JOAN CRAWFORD in Untamed with ROBERT MONTGOMERY ERNEST TORRENCE JACK CONWAY Production

SHIRT-CRAFT AIRMAN A SHIRT AS COOL AS A TRIP THRU THE CLOUDS. \$1.95 White and Fast Colors TAILORED WITH THE EVERFIT COLLAR It Can't Shrink Trotter's QUALITY CLOTHES SHOP THE STORE FOR EVERY MAN