

**MILLINERY**  
**NEW AND LOVELY**

Deep brims, shallow crowns, pleated brims, smart bonnet effects and off-the-face versions.

**\$3.95 to \$12.50**

**H-I-L-L'S**



**DUCKS WIN FIRST SERIES OF YEAR**

Split Double Bill With Stars — Sacramento Trims Seals.

The Portland Ducks won the series from the Hollywood Stars, four games to two, splitting a double header with the movie city team yesterday. The Ducks took the forenoon game, 3 to 2, after a spirited contest which was featured by a fight between Chapman of Portland and Fisher West of the Stars. The Ducks led, 2 to 0, in the eighth inning in a "near" count in the eighth. Fisher West, the "Great" pitcher of the Stars for seven seasons in the second game, only to have Hollywood rally in the eighth to score five runs and tally four times in the ninth to win 3 to 2. The Sacramento Senators, who only broke a two-year losing streak to the San Francisco Seals last week but also moved into the favored position in the second league standing by virtue of a series victory, over the Seals, four games to three.

**Senators Win**  
The Senators wound up the series in a dramatic style taking a double-header from the Seals at Recreation park yesterday. They triumphed in a masterful ball to give the Senators the morning game 7 to 2 while Zinn and Prater gave a fine exhibition to win the afternoon, 4 to 2.

The Los Angeles Angels also climbed up a few notches and settled in second place after outslugging the Oakland Oaks, Seals leaders last week, in a double header. Truck Hudson, named over the top with a Wrigley field with two men on bases to give the Angels the opening frame, 3 to 2 while Fulton led the Oaks to six runs and six hits with the Senators.

**ROBINS SLUG TO DOUBLE VICTORY**

Three Major League Clubs Give Fans Plenty of Excitement With Rallies.

**Normal School Drops Saturday Game To O. N. S.**

The Eastern Oregon Normal school baseball team has returned from Menmouth, where the Mountaineers had two games to the Oregon Normal team, the first Friday, 3 to 1 and the second Saturday, 2 to 1. The Oregon Normal pitcher held the visitors to one hit Saturday while his team mates went wild, scoring 11 runs in the sixth inning.

**Yanks Move Up**  
The New York Yankees brought another change in the American league standing, moving into sixth place ahead of Boston by beating the Chicago White Sox, 7 to 4. Babe Ruth's third home run of the year helped the Yankees' comeback. It came in the eighth in-

**League Standing**

By the Associated Press

COAST	W.	L.	Pct.
Sacramento	17	19	.473
Los Angeles	15	19	.438
Oakland	14	11	.558
San Francisco	12	12	.500
Portland	11	12	.476
Hollywood	9	16	.359
Portland	9	17	.344

NATIONAL	W.	L.	Pct.
Pittsburgh	19	5	.790
New York	4	5	.444
Chicago	11	8	.577
Brooklyn	9	7	.563
Boston	7	8	.467
Cincinnati	6	7	.460
St. Louis	11	11	.500
Philadelphia	5	10	.333

AMERICAN	W.	L.	Pct.
Cleveland	11	4	.733
Washington	11	5	.688
Philadelphia	10	5	.667
Chicago	7	5	.583
St. Louis	5	8	.385
New York	5	7	.417
Boston	1	11	.214
Detroit	0	14	.000

**GARDEN HOSE**  
**United States & Goodyear**  
**50-FT. LENGTHS**  
**\$4.45 to \$6.75**  
**W. H. BOHNENKAMP CO.**

**Announcing New Service**  
by  
**MOTOR COACH**

**Pendleton — Walla Walla — Lewiston**  
**Spokane — Yakima — Bend — Portland**  
**Baker — Boise — Twin Falls — Pocatello**  
**Salt Lake City**

3 Trips Daily to Pendleton and Way Points.  
3 Trips Daily to Baker and Way Points.  
3 Thru Trips Daily to Portland and Way Points.  
2 Thru Daily Service to Weiser, Ontario, Boise, Twin Falls, Pocatello, Salt Lake City and Way Points

Connections are made at Pendleton to and from Spokane, Coeur d'Alene, Colfax, Lewiston, Pullman, Moscow, Walla Walla and Way Points.  
Connections are made at Umatilla to and from Kennewick, Pasco, Spokane, Yakima, Ellensburg, Wenatchee and all Yakima Valley Points.  
Connections are made at Arlington to and from Heppner, Condon, Fossil and all John Day Valley Points.  
Connections are made at The Dalles to and from Prineville, Bend, Klamath Falls and all Central Oregon Points.  
Connections are made at Portland to and from Tacoma, Seattle, Vancouver, E. C. and Way Points North and Salem, Corvallis, Eugene, Roseburg, Medford, Sacramento, San Francisco, Los Angeles and all Way Points South.  
Connections are made at Salt Lake City to and from Denver, Omaha, Kansas City, St. Louis, Chicago, New York and all Eastern Cities.

**Motor Coaches Leave La Grande**

FOR	One Way	Round Trip
Pendleton	5:40 a. m.; 9:30 a. m.; 6:50 p. m.	\$2.25 \$3.40
Walla Walla	9:30 a. m.	3.75 5.65
Lewiston	9:30 a. m.	7.25 10.90
Spokane	9:30 a. m.	8.75 13.15
Yakima	5:40 a. m.; 9:30 a. m.; 6:50 p. m.	7.30 12.65
Portland	5:40 a. m.; 9:30 a. m.; 6:50 p. m.	8.00 12.05
Baker	10:10 a. m.; 4:00 p. m.; 8:25 p. m.	1.80 2.70
Boise	10:10 a. m.; 8:25 p. m.	7.10 10.65
Salt Lake City	10:10 a. m.; 8:25 p. m.	19.15 31.90

Inquire at Stage Depot for rates and schedules to all points Express Shipments Carried on All Schedules

**Columbia Gorge Stage Depot**  
Elm and Jefferson Sts. Phone Main 799

**COLUMBIA GORGE MOTOR COACH SYSTEM**  
— and Yamhill Portland, Oregon

**Many Bargains Listed on Want Ad Page**

*Seasoned... smart*

**STUDEBAKER EIGHT**

for only **\$1195** AT THE FACTORY DOWN **\$492** DELIVERED COMPLETELY EQUIPPED

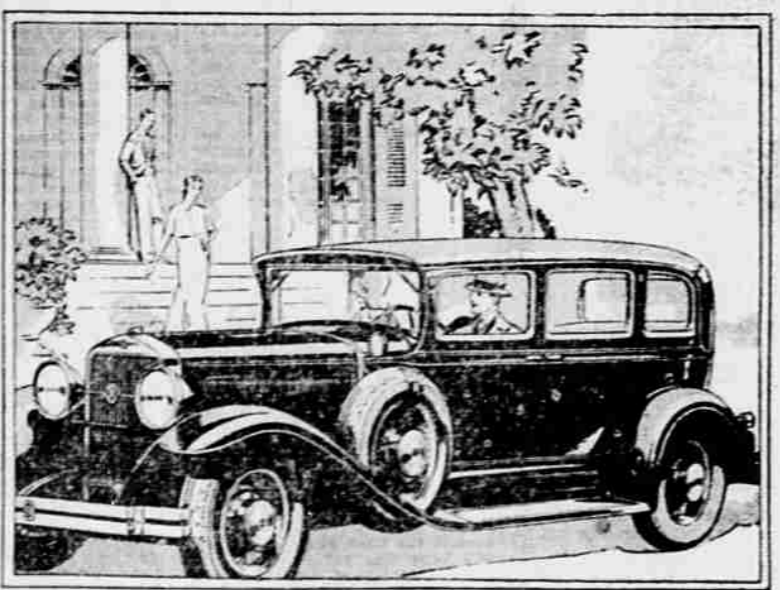
-costs less than 14 different sixes but will be worth more than a six when you trade it in!

**C**ERTIFIED by more than 100,000 Studebaker Eights in owners' hands, Studebaker's three great Straight Eights are seasoned and proved. Among them they hold the greatest world and international records, and more American stock car records than all other makes of cars combined. Yet despite their enduring soundness, their champion performance and their graceful style, these brilliant Eights are low in price. It is quite likely that your present car will suffice as down payment.

*Studebaker Eights Cost No More to Buy or to Operate*

Dictator Eight Club Sedan	\$1195
Dictator Eight 4-Door Sedan	1295
Commander Eight 4-Door Sedan	1515
President Eight 4-Door Sedan	1795

*Studebaker also offers champion stars from 1925 to 1927. Prices at the factory.*



Operating economy is a Studebaker tradition. In 23 officially supervised tests the Dictator Eight set a national average of 16.9 miles per gallon of gasoline. In recent tests Studebaker's Commander Eight averaged 15.9 miles to the gallon. It costs no more to operate a Studebaker Eight; costs less to buy than 14 different makes of sixes. In addition, the trade-in value of a Studebaker Eight will be worth more than a Six.

**In a judge it's Character**



**in a cigarette it's Taste**

**WHAT INTEGRITY** is to a public official, taste is to a cigarette—the one quality that wins and holds public confidence and esteem.

**ON TASTE AND TASTE ALONE**, Chesterfield continues to gain smokers, both men and women. Chesterfields are mild—not strong or harsh—yet they have richness of flavor and aroma. They are not insipid or tasteless.

**WITNESS THE STEADY GROWTH** in the popularity of Chesterfield—a popularity which proves that with smokers, as with us, it's "TASTE above everything"



We state it as our honest belief that the tobaccos used in Chesterfield cigarettes are of finer quality and hence of better taste than in any other cigarette at the price. LIQUETT & MYERS TOBACCO CO.

**M. J. GOSS**  
1419 Adams Ave.

**Chesterfield**

© 1930, LIQUETT & MYERS TOBACCO CO.