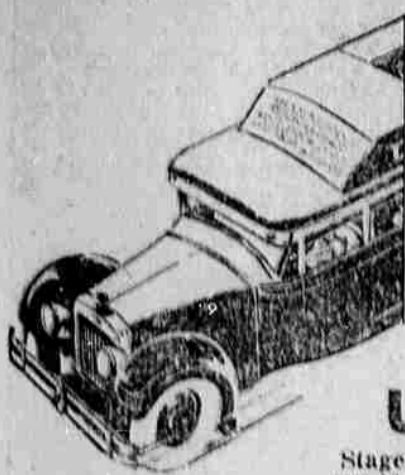


DIRECT SERVICE TO SALT LAKE CITY



Travel over lines of Union Pacific stages is comfortable and economical. Our fine and cream motor coaches are the latest type of equipment obtainable.

Some departure time of stages

Westbound
Portland and Intermediate Points
2:05 p. m. 7:25 p. m.

Eastbound
 Boise, Salt Lake City
9:40 a. m. 7:50 p. m.

Low fares and direct connections to all Eastern Points.

UNION PACIFIC
Stages

Stage Depot
1208 Adams Ave.
PHONE M 49

interested by the masterly campaign he put up in 1877. It took the United States army a long time to capture him and they had to follow him into Montana to do so.

Since Chief Joseph conducted war for the purpose of retaining the Wailowa valley which had been allotted to them, the Indians do not suggest that the white men honor his memory. They make the suggestion however that the elder Chief Joseph, father of the warrior, be honored on the ground that he was the first convert of the Whitman mission. In their view a tablet to the elder Chief Joseph would be a fitting thing at Whitman college, or at some other point in this territory.

Members of the committee who are not of the Nez Perce tribe say they are interested in the subject with a view to getting the history straight. They also object to the claim made that the Indians were hostile to Governor Stevens and that he benefited by Chief Joseph's protection.

Most of the local Indians are of the Cayuse, Umatilla and Walla Walla tribes but there have been many intermarriages with the Nez Perce. E. J. Conner, who for a time was in charge of the Tutuilla mission, is a Nez Perce and his former wife was the niece of Chief Joseph.

The Indians have taken the matter up with President S. D. Fox-

rose of Whitman college but he has referred them to N. W. Durham of Spokane who is to be the orator at the unveiling of the tablet to Chief Joseph. The Indians desire to see Mr. Durham if possible and give him the Indian version of the story before he makes his speech.

ANXIOUS SUFFERER

Patient—Doctor, how soon do you think I shall be well enough to eat things that don't agree with me?

America: A nation which produced the song, "Home, Sweet Home," and the query, "Where do we go from here?"

SMALL BOY: TAD, WHAT ARE THE HOLES IN THIS BOARD FOR?

Old: Those are knot holes.

Small Boy (after consideration): Well, if they're not holes, what are they?

COWBOY BALLADS WILL BE TAKEN TO EUROPE

AMHERST, Tex. (AP)—The songs of the cowboy will be heard at Europe this summer, and the American hand which will play them will wear boots and ten-gallon hats.

The Simmons university cowboy band, accompanied by several hundred Texans, will entertain Europeans with such ballads as "O, Hurry Me Not on the Lone Prairie," "Goodbye Old Paint," "The Old

WISDOM

Wisdom demands that you secure the services of expert morticians who know the science and ethics of their profession and who have demonstrated their capacity and ability.

We Understand
Snodgrass & Zimmerman
Phone Main 62

NU-WOOD

The Insulating Wall Board.

It's fine for insulating your attic or for any other place where a high grade insulating board is required. It's a full half inch thick.

VAN PETTEN LUMBER CO.

PHONE MAIN 732.

"GOOD SERVICE QUICK"

USED CARS

1928 Pontiac Sport Coupe
This car was sold new in 1929—Always had the best of care—A Bargain at \$550

PERKINS MOTOR CO.
Main 500 4th and Adams

Menus Of The Day

By Mrs. Alexander George
12 N. BROAD, SEASIDE HOT
SPRINGS, ORE.

Breakfast
Eggs, Ham, Butter, Syrup
Wheat Oatmeal and Cream
Buttered Toast and Coffee

Luncheon
Chicken Sandwiches
Lettuce Sandwiches
Dessert

Dinner
Tuna Loaf, Creamed New Potatoes
Buttered Noodles
Brood, Currant Jelly
Cabbage Salad, Applesauce
Custard, Dessert

Train Cookies
One-half cup fat
One and one-half cups light brown sugar
Two eggs
One teaspoon vanilla
One-third cup molasses
One teaspoon cinnamon
One-half teaspoon salt
One cup raisins
One-fourth cup sour milk
Two and one-fourth cups flour
One teaspoon soda
Cream the sugar. Mix well and add eggs. Beat 2 minutes. Add other ingredients and pour into greased baking sheets. Space 2 inches. Flatten each cookie and bake 12 minutes in moderate oven.

Tuna Loaf, Serving 6
One cup tuna
One cup salt cracker
One teaspoon lemon juice
One tablespoon finely chopped parsley
Two tablespoons chopped mushrooms
Two eggs
One-fourth teaspoon pepper
One-half teaspoon salt
One-half cup milk

Two tablespoons butter, melted. Mix ingredients and press into greased loaf pan. Bake 30 minutes in moderate oven.

California Dessert
One cup dried pineapple
One cup dried oranges
One cup dried peaches
Two tablespoons lemon juice
One-half cup shredded coconut
Four tablespoons confectioner's sugar
Mix and chill ingredients and serve in glass cups.

Here are getting less expensive so that they can be served frequently, either alone or in combination with vegetables and cream sauce for omelette dishes.

Add figs, chopped dates, raisins or nuts to cereal mixtures for variety.

Serve freshly cooked greens, orzo. They are really a spring tonic.

Indians Say Chief Lawyer Story Untrue; Chief Joseph Real Hero

PENDLETON, Ore. (Special)—Local Indians do not see the philosophy in placing a tablet at Whitman college in honor of Chief Joseph, which ceremony is to occur on June 3. No such story they contend about the matter that they held a council at the agency and appointed a committee of eight to present the facts in the case. The committee as named consists of Albert Mathern, James Kaulak, Gilbert Mathern, Allen Patawa, Phillip Jones, Edward J. Conner, Gilbert E. Conner, secretary and Major Oscar Babcock of the Tutuilla agency.

As they explain it the Indians do not object to seeing the memory of Chief Joseph honored but they take exception to the tale that he saved the life of Governor Stevens of Washington in 1825. It was the other way around they claim.

A commonly accepted version is that when Governor Stevens came on a treaty making mission that the Indians were hostile and that Chief Joseph saved the governor's life by pitching his tent alongside that of the official thus placing him under the Nez Perce chief's protection.

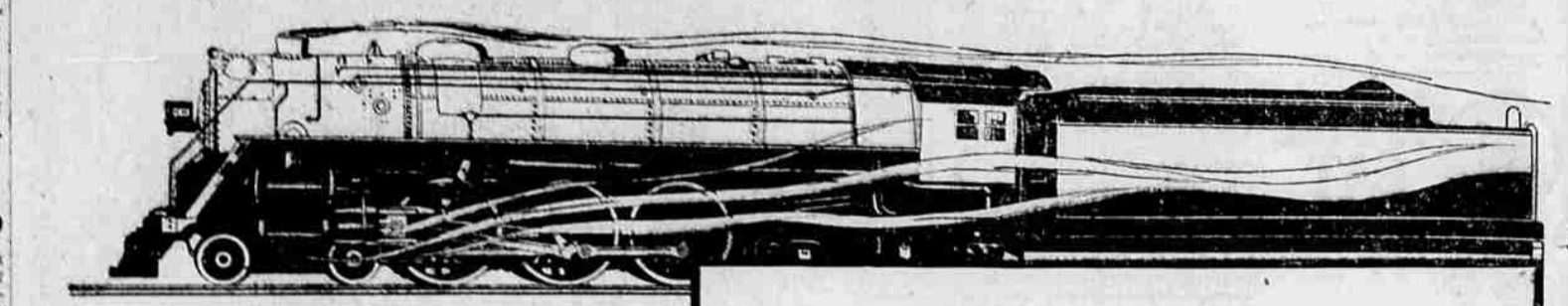
The Indian version is different. It is that the Indians assembled were not hostile to Governor Stevens but some of them because they

framed at Lawyer because they felt he had betrayed the interests of the Indians. The Assin chief, Assinwahaski, was one of those who thought so and there was danger they might miss up the ground with Chief Joseph or something to that effect. Chief Joseph moved his camp to that of the white men, not to protect them but to protect himself, it is held.

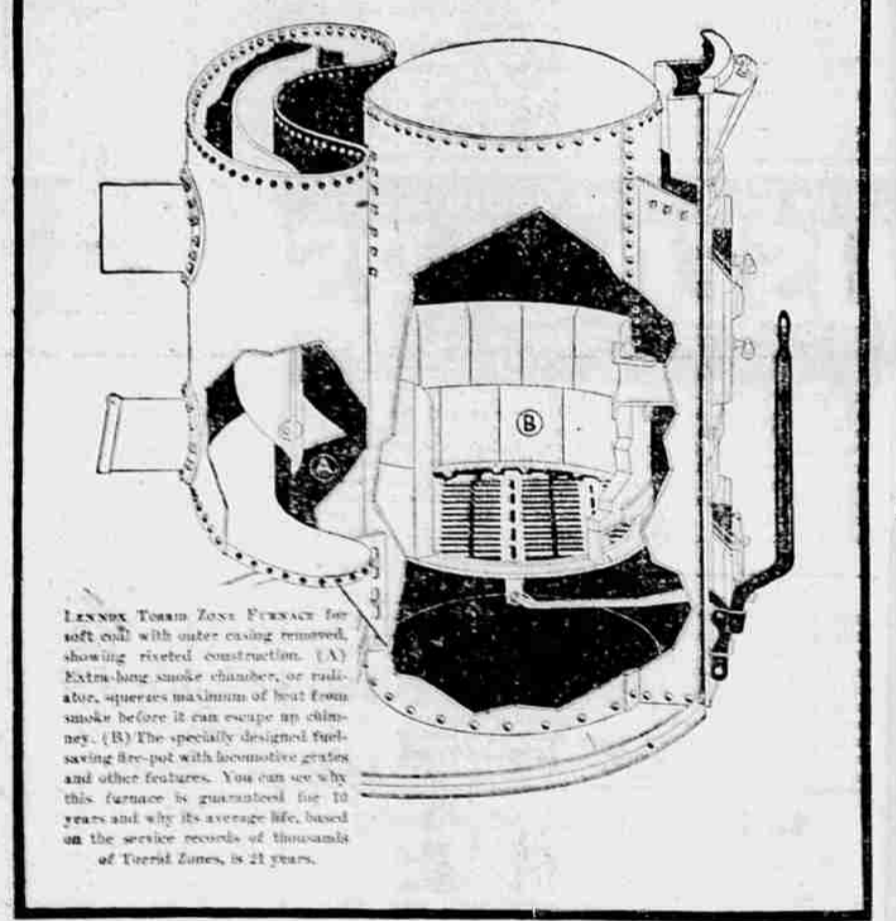
So much for that point. The Indians point out that Lawyer was not a big Nez Perce chief but was one of 25 Nez Perce chiefs assembled to talk with Governor Stevens. The chiefs were about on a par as to rank. The Nez Perce Indians were divided in the main into two groups, the upper Nez Perce and the lower Nez Perce, consisting of point in history to which the lower those living farther south. One Nez Perce object is the claim that they were "toxic Indians." They say this is not true and that they had more horses than the upper group and that the northern Indians were more given to roving habits.

Praise Chief Joseph
The really big point the Indian committee makes is that if any Nez Perce chief is to be honored it should be Chief Joseph. He was a real leader and a real warrior as

RIVETS MAKE THE LOCOMOTIVE STEAM-TIGHT



The TORRID ZONE STEEL FURNACE
is gas-tight and dust-tight because it is riveted



The smell of coal gas is unknown in homes heated by the steel Torrid Zone. Winter after winter, without replacement or repair, this marvelous furnace keeps delivering clean, healthful, luxurious heat.

For just as the locomotive boiler is made of steel boiler-plate, hot-riveted and cold-colded for complete safety—so the Torrid Zone is made gas, smoke and dust-tight.

This is the wonderful improvement this furnace can mean in your home next winter—a more healthful atmosphere and greater cleanliness. No more poisonous gases—no more smoke or dust from registers to soil your walls and draperies. Even the collar will be cleaner than you ever dreamed it could be. Every part of the Torrid Zone is as tight as a drum.

LENNOX TORRID ZONE FURNACE for soft coal with outer casing removed, showing riveted construction. (A) Extra-long smoke chamber, or radiator, squeezes maximum of heat from smoke before it can escape up chimney. (B) The specially designed fuel-saving fire-pot with locomotive grates and other features. You can see why this furnace is guaranteed for 10 years and why its average life, based on the service records of thousands of Torrid Zones, is 21 years.

Two other essentials to healthful heating—humidity and air circulation (or ventilation)—obtainable only with warm air systems are yours with the Lennox Torrid Zone. In the Torrid Zone, the humidifier has twice the evaporating area inside the casing of ordinary water pans. Rapid evaporation is also necessary, so it is placed directly above the firing doors where it gets the most heat possible. Proper air circulation is guaranteed, when an authorized Lennox Furnace man installs it according to the Standard Code. This is the most desirable heating plant that science has yet devised.

Torrid Zone design means more heat from your favorite fuel

Pick your favorite fuel—soft coal, coke, hard coal, oil, lignite, gas or wood—this furnace will save you money in burning it. The Torrid Zone produces from 10% to 20% more heat from the fuel than other furnaces do, hence will heat your house with less fuel than any other furnace will consume. Oversize heating surface radiates the greatest possible amount of heat from the smoke before it escapes up the chimney.

Come see this marvelous heating unit today—or phone or write. We want to show you the sturdy locomotive grates, the "lazy" shaker and many other features that would need pages if explained in this paper. Indeed, we have a mighty interesting book about it to which you are welcome. Plans and estimates quickly furnished for installations in new or old homes and other buildings of all types and sizes. Factory engineering service and blueprints obtained for special problems. Made by the LENNOX FURNACE COMPANY, Syracuse, New York—Marshalltown, Iowa—Toronto, Canada.

extra quick starting

extra mileage

extra power

Each time you take on a filling of VELTEX GASOLINE you get a tankful of EXTRAS for your money. Extra quick starting—Extra Mileage—Extra Power. All these EXTRAS without extra cost.

VELTEX GASOLINE

Is a SPECIAL SPECIFICATION motor fuel—super-refined to meet motoring conditions in this territory. It is clean, pure and highly volatile. Each drop is chock full of POWER UNITS. That's why your motor takes on a new life, more speed, a new brilliancy of performance when VELTEX GASOLINE is used. Try one tankful today. Note carefully the extra power and extra mileage it gives you. After all, that's what you want, and that's what VELTEX gives you.

FLETCHER OIL COMPANY
Oldest Independent Marketers in the Northwest

VELTEX MOTOR OIL
Pure Paraffine Base

This extra viscosity motor oil gives you an EXTRA margin of safety. It will run any engine better, not just and give it better lubrication at all times. A special grade for every automobile, truck or tractor motor.

LENNOX Torrid Zone STEEL FURNACES

The Standard Code for detailing a warm air system, adopted by the National Warm Air Heating Association and written by its research engineers, is our code.

NATE ZWEIFEL
1314 Jefferson Ave. Phone M-81