

La Grande Evening Observer

(Incorporated)
An Independent Newspaper

FRANK B. APPLEBY Editor and Publisher
HARVEY F. MATTHEWS Business Manager

Published evenings, except Sunday, at 1416 Adams Avenue, La Grande, Oregon. The Observer-Star published every Friday. Entered at the Postoffice of La Grande, Oregon, as Second Class Mail Matter under act of March 3, 1879.

OFFICIAL PAPER OF UNION COUNTY AND THE CITY OF LA GRANDE

MEMBER OF ASSOCIATED PRESS

The Associated Press is exclusively entitled to use for publication of all news dispatches credited to it or not otherwise credited if published herein. All rights of reproduction of special dispatches in this paper, and also the local news herein also are reserved.

National Advertising Representative
M. C. MOGENSEN CO., Inc.
San Francisco, Los Angeles, Seattle, Portland, Chicago, Detroit, New York

SUBSCRIPTION RATES

Daily, per month in advance	75c
Daily, six months in advance	\$4.50
Daily, single copy	5c
By Mail	
Daily, per month in advance	80c
Daily, per six months in advance	\$5.00
Daily, per year in advance	\$10.00
Weekly, Observer-Star, per year	\$2.00

ADVERTISING RATES
Display, foreign, per column inch 42c
Display, local, per column inch 45c
Time contract prices on application.

A SOLEMN WARNING—Let not sin therefore reign in your mortal body, that ye should obey it in the lusts thereof.—Romans 6:12.

FITS LATEST THEORY OF CREATION



Discovery of new planet strengthens theory of earth's creation from a flaming streamer such as spiral in Hunting Dog (upper right). Dr. Clyde A. Fisher, (top), curator of astronomy, American Museum of Natural History, explains theory. Scale shows relative distances of planets. New planet was first seen at Flagstaff observatory (left).

If Baker and La Grande could get together and average the extent of their respective city limits, the census returns would be ideal for both communities. Baker has such a wide area included in the city that 63 farms are listed in the census. La Grande has such a small area that 1500 people reside outside.

Senator Bennett made his bid for republican votes in La Grande yesterday, voicing numerous good theories but failing to impress his hearers as possessing the ability to give them practical application. He left the impression of being somewhat ambiguous and inconsistent—urging tax economy one minute and larger expenditures the next. Mr. Bennett, who is a butcher in Portland, is obviously sincere. He hasn't, however, a ghost of a show for the nomination and one wonders why this wide campaign under the circumstances. He is expected to run fifth in the race—possibly fourth.

One of the "horrible example" of what the new tariff schedule will mean to the consumer is its effect on the prices of straw hats. The new tariff imposed a duty of \$3.50 a dozen plus 50 per cent. ad valorem on imported straw hats. That means next year's "hay kelly" will cost from seventy-five cents to \$1 more than a hat of equal costs this year. But why confine the "horrible examples" to straw hats? Everything else included in the tariff schedules will be affected the same way. Tariff-making is a complicated business for the consumer when it doubles prices without boosting wages at the same rate. Who will get the difference between the old and the new prices? Will the workers in American hat factories get the lion's share, or any share at all? Higher prices for protected commodities are inevitable. It is now up to the government and the protected manufacturers to guarantee public benefits through increased employment, higher wages and fair prices.

The first official census total for La Grande leaves this city thirty less than eight thousand with two days remaining for final check. Several new names were reported to The Observer this morning. We need twenty or thirty more to be sure the total goes over the eight thousand mark. Many whose legal residence is actually La Grande cannot be credited to this city under strict census rules. Sheep herders, for example, who are now in the hills with their charges may count this city as their home but they are enumerated merely as residents of Union county. Men working on the highway and sleeping at the construction camps may be La Grande citizens but the census says they live where they sleep at the time the enumerator finds them—and credit goes only to Union county. Approximately two hundred normal school students are actual citizens of this city most of the year, but they are listed in the census as residents of other communities. The count, therefore, is low. It is disappointingly low; but La Grande has much company for consolation. What we need most is thirty residents who have been missed so that they may be added and bring the total over 8000.

CANADA GETTING ON

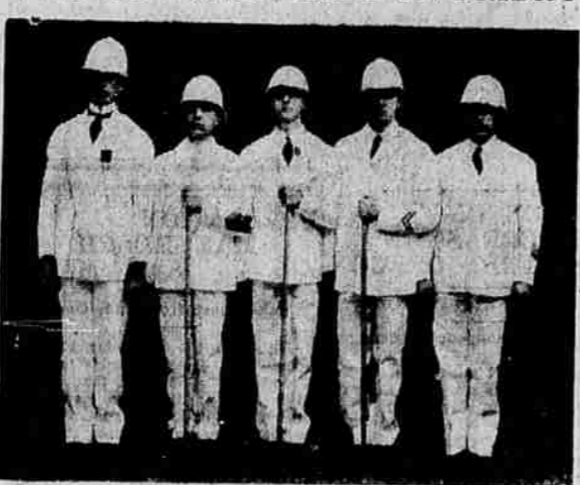
No nation in the world today is making more rapid progress than the Dominion of Canada. Since the World war, Canada has changed from an almost wholly agricultural country to a land of industry. Budding industries have sprung up in the provinces that are beginning to make a respectable showing. With this industrial development there has come an interest in world trade.

The dominion's export trade now exceeds a billion dollars a year, and it is significant that only a third of that is in raw materials. Mining is the future industry of Canada. It has unlimited sources of the finer metals and coal, and is developing them at a creditable rate. They represent future prosperity.

These are facts of interest for every citizen of the United States. The Dominion is our best customer in the world market, so her prosperity is our prosperity. Moreover we feel a kindly regard and neighborly pride and sympathy for our neighbor to the north.

Europe would find such feelings incomprehensible. Over there a growing, prospering country is looked upon with envy and misgivings by all its neighbors. To them it constitutes a threat which must be eradicated at all costs, usually by war. Such thoughts are wholly foreign to North Americans, which explains the century plus of peace along the international boundary.

"WHITE WINGS" HERE ON FRIDAY



"White Wings," a comedy presented by the Moroni Olsen Repertory Co., under the auspices of the E. O. N. student body, will be staged here Friday evening in the Normal school auditorium. The picture above shows the white wings in the play.

MANY DEATHS UNNECESSARY CHIEF SAYS

(Continued from Page One)

plined supplies, and sole out ammunition to guards.

Now that Amadio has had time to think over the terrible night, she seems dazed by the extent of the tragedy. She told newspapermen that "we're sitting on top of a living volcano here. There have been rumblings right along. We had an understanding with the soldiers and the police that they would come quickly if called. When the cry of fire went up Monday night, and the yard was filled with that vicious smoke, I knew the volcano was loose."

The opinion that Warden Thomas of Ohio penitentiary, would have been killed had he entered the prison yard during the fire Monday, was expressed today by the Rev. Father Albert O'Brien, Catholic chaplain.

The penitentiary chaplain, commenting on the fact that the warden ordered his chief deputy to take charge inside and himself took command outside to prevent any possible movement of prisoners over the walls, said: "If Warden Thomas had stepped inside the walls of the penitentiary during the pandemonium of the fire, he surely would have been killed."

ing Catholics.

A split of unrest among the thousands of convicts early today in Ohio state penitentiary, scene of the tragic fire Monday night when 318 prisoners were burned to death or suffocated, disappeared at dawn and the corps of guards that there would be trouble was dissipated.

Back to Normal

Prison routine was to be normal today, excepting that the cotton and woolen shops were not to be operated.

Many persons, whose relatives met death in the fire, visited the penitentiary this morning asking for permission to remove the bodies. Many of the women were crying. All were sent to the hospital building on the Ohio state fair grounds where the 318 bodies are laid out.

The Ohio state board of identification and the penitentiary today ordered that all the bodies be fingerprinted so as to make certain of identification. As soon as bodies are positively identified and claimed, they will be sent to the destinations, named by relatives. Until positive identification is established, no body will be released.

THEY DIDN'T MARRY

LONDON (AP)—All the eligibles seem to have departed without Anglo-American alliances. One of the girls with the American naval delegation, homeward bound, remarked that London men were the finest she had ever met, and a marine said that the London girls were wonderful. No engagements have come to light.

SEEKS GOLF TITLE

NEW YORK (AP)—The only man Glenn Collett has designs on now is John Bull and she wants to take away one of his golf titles. But she has hopes. Leaving on the same boat with Mrs. Helen Willis Moody, Glenn was quizzed about her single bliss and so forth. She's clever. She said she had no immediate idea of matrimony, but added: "But I might take up tennis."

SAVE
STEVENS-VAN ENGELEN CO
STORES
DRAPERIES
A vast assortment of curtain nets and scrims in many patterns.
White, Ecru or Cream
15c to 89c

Butter Prices Still Unchanged Despite Supply

PORTLAND, Ore., Apr. 23 (AP)—Butter prices were still hanging on without change today despite the accumulation of supplies. Storage stocks are growing daily and still the receipts come in.

Prices likewise were unchanged. Reviewing the fruit and vegetable situation, the Portland bureau of the United States department of agriculture says:

"Carrot shipments of four important commodities—apples, lettuce, onions and potatoes—reached the lightest volume in some time Tuesday. No additional firmness is noted in any of these, however. Potatoes are rather dull at Yakima; onions are very dull at all Oregon points; and lettuce supplies at Portland are too heavy to reflect the strength at shipping points. California lettuce markets are excited, and buying is active.

"Green peas are in liberal supply; quality is very good, and prices are unusually low, at 6-7c per lb. to retailers.

"Strawberries show a very wide range in quality. Cool weather has made for slower demand; consequently much stock is moving at a sacrifice, as low as \$1.75 per 20-pint crate. Best berries now at a premium of 50-75c per crate."

GASOLINE PRICES BACK TO NORMAL

(Continued from Page One)

Those who went on long rides and enjoyed them more because of the cheap gasoline have the memories and the memories saved to make them happy; but the major-ity who thought the war would last until next Sunday, when he would take a long trip, will have to raise the ante.

BUTTERFAT

SAN FRANCISCO, Apr. 23 (AP)—Butterfat 7, 8, b, San Francisco, 42c.

SAVE with SAFETY

Natural Relief from Constipation

AGAREX \$1.00 ONE PINT

Agarex lubricates the bowels and softens the hardened contents. The action is purely mechanical. That's because Agarex is non-absorbent and non-irritant. It's pleasant-tasting and is not fattening or greasy. With or without phenolphthalein. Sold only at Rexall Stores.

GLASS DRUGS, Inc.
721 Rexall Store

FALK'S LA GRANDE STORE
Successors to N.K. WEST & CO.

THERE IS STILL TIME TO ENROLL IN OUR

SEWING CLASSES

Under the Supervision of
MRS. JUDETHIA BLACKBURN
PREEMINENT INSTRUCRESS

ENROLLMENT FEE \$5 ONLY
COVERS FULL TWO WEEKS' COURSE

We guarantee that you will completely finish at least two garments of your own choosing during this course. The classes are so arranged as to take care of the novice as well as the professional. As a special feature Mrs. Blackburn will personally cut and fit, to your own measurement, a sleeve pattern that you may keep for future use, that may be used for any style sleeve. For additional information phone Main 5 or call at our piece goods counter.

MARKET NEWS OF THE DAY

CHICAGO WHEAT

	Open	High	Low	Close
May	1.04 1/4 @ 3/4	1.05 1/4	1.04 1/4	1.04 1/4 @ 3/4
July	1.04 1/4	1.07 1/4	1.05 1/4	1.06 1/4 @ 1.07
Sept.	1.02 1/4 @ 1/2	1.10 1/4	1.00	1.10 1/4
Dec.	1.13 1/4 @ 3/4	1.15 1/4	1.13 1/4	1.14 1/4 @ 1.15 1/4

PORTLAND WHEAT

	Open	High	Low	Close
May	1.04 1/4	1.05	1.04 1/4	1.04 1/4
July	1.06	1.06 1/2	1.06	1.06 1/2
Sept.	1.06 1/2	1.07	1.06 1/2	1.07

PORTLAND CASH

PORTLAND, Ore., Apr. 23 (AP)—Cash wheat: Big blond bluestem, hard white \$1.15.
Soft white \$1.06.
Western white \$1.04.
Hard winter \$1.04.
Northern spring \$1.04.
Western red \$1.04.
Oats: No. 2-38 lb. white \$21.50.
Today's ear receipts: wheat 23, barley 1, flour 16, corn 11, oats 2, hay 1.

LIVERPOOL WHEAT

LIVERPOOL, Apr. 23 (AP)—Wheat close: May 7 7/8 d 41.14 1/2; July 7 5/8 d 41.13 1/2; October 8 3/4 d 41.17 1/2.

PORTLAND PRODUCE

PORTLAND, Apr. 23 (AP)—Butter and eggs: stationary, unchanged.
Milk (buttermilk), poultry, country meats, onions, potatoes, wool, hay, nuts, oysters, bark and hops steady and unchanged.

SUGAR AND FLOUR

PORTLAND, Ore., Apr. 23 (AP)—Sugar (sneaked basis) — steady; cane, fruit or berry \$5.10 per cwt. Beet sugar \$4.95 cwt.

PORTLAND LIVESTOCK

PORTLAND, Ore., Apr. 23 (AP)—Cattle: receipts cattle 100, calves

(excluded in above quotations).
Sheep: 75, notably steady.
Lamb, good to choice \$9.25 @ \$10.00, 84 to 92 lbs. \$8.75 @ \$9.50, medium \$8.50 @ \$9.25, common \$7.00 @ \$8.50. Yearling wethers \$5.00 @ \$7.00. Ewes \$6 @ \$8.00, 120-150 lbs. \$4.00 @ \$5.50, all weights, cull and common \$2.00 @ \$4.00.

No More Gas In Stomach and Bowels

If you wish to be permanently relieved of gas in stomach and bowels, take Basimann's Gas Tablets, which are prepared especially for stomach gas and all the bad effects resulting from gas pressure.

That empty, growing feeling at the pit of the stomach will disappear; that anxious, nervous feeling with heart palpitation will vanish, and you will again be able to take a deep breath without discomfort.

That drowsy, sleepy feeling after dinner will be replaced by a desire for entertainment. Hoarseness, acid eructations, your limbs, arms and fingers will no longer feel cold and "go to sleep" because Basimann's Gas Tablets prevent gas from interfering with the circulation. Get the genuine in the yellow package at any good drug store. Price \$1. Always on hand at Glass Drug, Inc. —ADV

ANNOUNCING . . .

O-P-E-N-I-N-G

PHOTO STUDIO

4TH & ADAMS
La Grande Hotel Bldg.

Cecil V. Ager

PHONE MAIN 926

WHAT BAKING TESTS

SHOW ABOUT FEDERATION

Laboratory baking tests prove the economy of Federation Flour. More loaves per sack than any other flour sold in this territory.

And gluten and protein tests are higher than most other flour selling at a higher price than Federation.

Buy this quality flour at a reasonable price.

MANUFACTURED and GUARANTEED by

La Grande Milling Co.

ASK YOUR GROCER FOR FEDERATION!